

Material	Polypropylene	Style	Smooth Side / Smooth Top
Part Weight	5.80 ± 1.50 g	Static Torque	23–40 in-lbs

PART DIMENSIONS

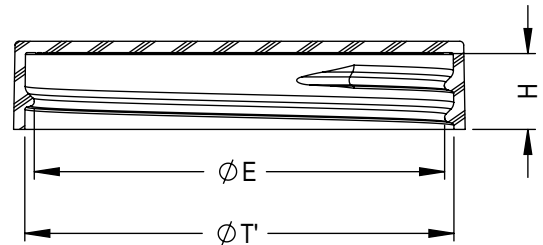
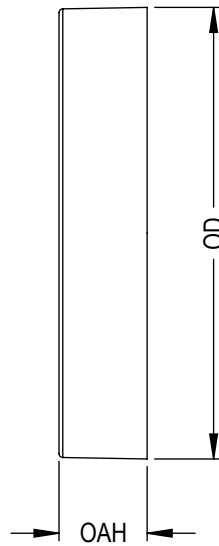
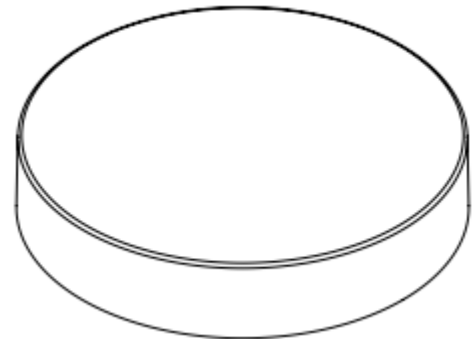
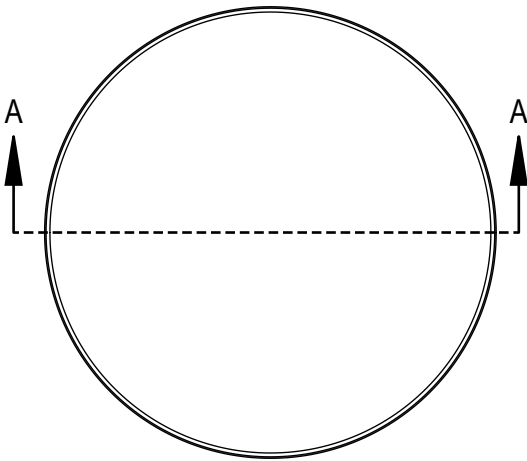
Reference	Dimension	Tolerance	Units
E	2.138 in (54.30 mm)	±0.015 in (±0.38 mm)	in [mm]
T'	2.235 in (56.77 mm)	±0.015 in (±0.38 mm)	in [mm]
H	0.400 in (10.16 mm)	±0.010 in (±0.25 mm)	in [mm]
OAH	0.459 in (11.65 mm)	±0.012 in (±0.30 mm)	in [mm]
OD	2.344 in (59.54 mm)	±0.015 in (±0.38 mm)	in [mm]

THREAD DETAILS

Threads Per Inch	6	Pitch	0.167 in (4.24 mm)
Full Depth Threads	415°	Thread Type	Continuous Thread
Surface Finish	Smooth top / smooth sides	Gate Location	Side

RECOMMENDED NECK FINISH

Reference	Dimension	Tolerance	Units
E	2.113 in (53.67 mm)	±0.017 in (±0.43 mm)	in [mm]
T	2.207 in (56.07 mm)	±0.017 in (±0.43 mm)	in [mm]
S	0.046 in (1.17 mm)	±0.015 in (±0.38 mm)	in [mm]
H	0.410 in (10.41 mm)	Minimum	in [mm]
Threads Per Inch	6	Pitch	0.167 in (4.24 mm)
Bottle Landing	0.050 in (1.27 mm) minimum	Seal Note	Flat recommended for proper induction seal



SECTION A-A

DISCLAIMER

This specification does not relieve the customer of their ultimate responsibility for the determination of the appropriate container. It is the customer's responsibility to select the appropriate packaging based upon all information at their disposal including the specific application, regulatory compliance, product compatibility and shipping requirements. WE HEREBY DISCLAIM AND EXCLUDE ANY EXPRESS OR IMPLIED WARRANTIES, INCLUDING WITHOUT LIMITATION THE IMPLIED WARRANTIES OF MERCHANTABILITY AND FITNESS FOR A PARTICULAR PURPOSE.

DISTRIBUTED BY:



REF NO.:

DWG-Q20258

DESCRIPTION:

58-400 PP Smooth Top,
Smooth Side Cap

Material	Polypropylene	Style	Smooth Side / Smooth Top
Part Weight	5.80 ± 1.50 g	Static Torque	23–40 in-lbs

PART DIMENSIONS

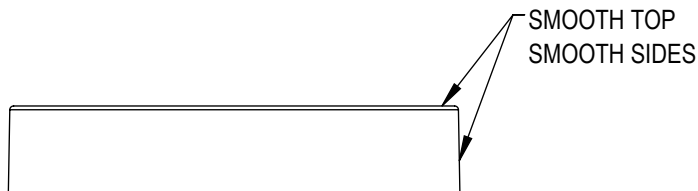
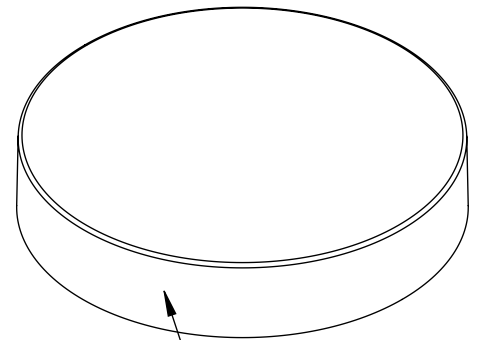
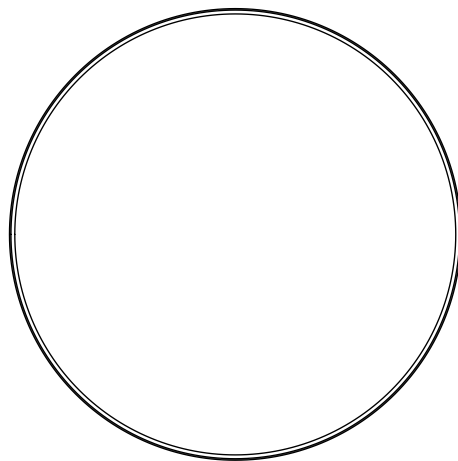
Reference	Dimension	Tolerance	Units
E	2.138 in (54.30 mm)	±0.015 in (±0.38 mm)	in [mm]
T'	2.235 in (56.77 mm)	±0.015 in (±0.38 mm)	in [mm]
H	0.400 in (10.16 mm)	±0.010 in (±0.25 mm)	in [mm]
OAH	0.459 in (11.65 mm)	±0.012 in (±0.30 mm)	in [mm]
OD	2.344 in (59.54 mm)	±0.015 in (±0.38 mm)	in [mm]

THREAD DETAILS

Threads Per Inch	6	Pitch	0.167 in (4.24 mm)
Full Depth Threads	415°	Thread Type	Continuous Thread
Surface Finish	Smooth top / smooth sides	Gate Location	Side

RECOMMENDED NECK FINISH

Reference	Dimension	Tolerance	Units
E	2.113 in (53.67 mm)	±0.017 in (±0.43 mm)	in [mm]
T	2.207 in (56.07 mm)	±0.017 in (±0.43 mm)	in [mm]
S	0.046 in (1.17 mm)	±0.015 in (±0.38 mm)	in [mm]
H	0.410 in (10.41 mm)	Minimum	in [mm]
Threads Per Inch	6	Pitch	0.167 in (4.24 mm)
Bottle Landing	0.050 in (1.27 mm) minimum	Seal Note	Flat recommended for proper induction seal



DISCLAIMER

This specification does not relieve the customer of their ultimate responsibility for the determination of the appropriate container. It is the customer's responsibility to select the appropriate packaging based upon all information at their disposal including the specific application, regulatory compliance, product compatibility and shipping requirements. WE HEREBY DISCLAIM AND EXCLUDE ANY EXPRESS OR IMPLIED WARRANTIES, INCLUDING WITHOUT LIMITATION THE IMPLIED WARRANTIES OF MERCHANTABILITY AND FITNESS FOR A PARTICULAR PURPOSE.

DISTRIBUTED BY:



REF NO.:

DWG-Q20258

DESCRIPTION:

58-400 PP Smooth Top,
Smooth Side Cap

Material	Polypropylene	Style	Smooth Side / Smooth Top
Part Weight	5.80 ± 1.50 g	Static Torque	23–40 in-lbs

PART DIMENSIONS

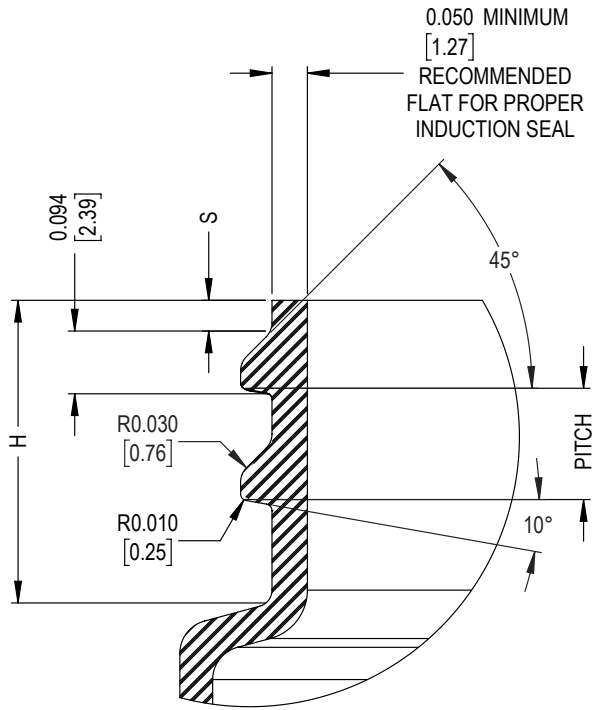
Reference	Dimension	Tolerance	Units
E	2.138 in (54.30 mm)	±0.015 in (±0.38 mm)	in [mm]
T'	2.235 in (56.77 mm)	±0.015 in (±0.38 mm)	in [mm]
H	0.400 in (10.16 mm)	±0.010 in (±0.25 mm)	in [mm]
OAH	0.459 in (11.65 mm)	±0.012 in (±0.30 mm)	in [mm]
OD	2.344 in (59.54 mm)	±0.015 in (±0.38 mm)	in [mm]

THREAD DETAILS

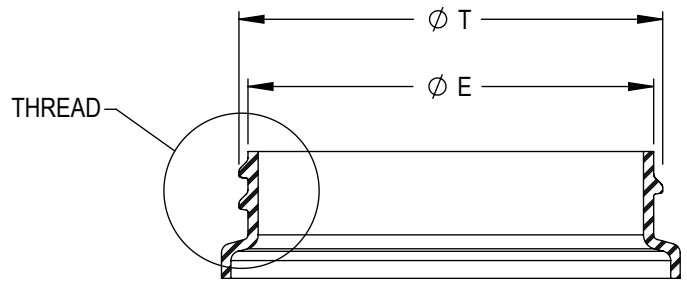
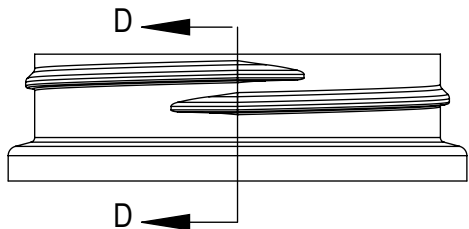
Threads Per Inch	6	Pitch	0.167 in (4.24 mm)
Full Depth Threads	415°	Thread Type	Continuous Thread
Surface Finish	Smooth top / smooth sides	Gate Location	Side

RECOMMENDED NECK FINISH

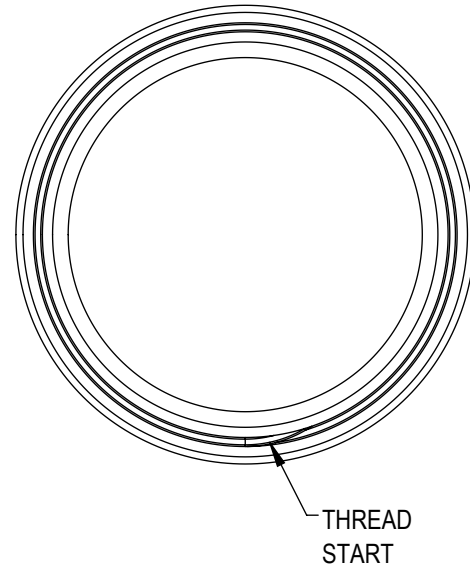
Reference	Dimension	Tolerance	Units
E	2.113 in (53.67 mm)	±0.017 in (±0.43 mm)	in [mm]
T	2.207 in (56.07 mm)	±0.017 in (±0.43 mm)	in [mm]
S	0.046 in (1.17 mm)	±0.015 in (±0.38 mm)	in [mm]
H	0.410 in (10.41 mm)	Minimum	in [mm]
Threads Per Inch	6	Pitch	0.167 in (4.24 mm)
Bottle Landing	0.050 in (1.27 mm) minimum	Seal Note	Flat recommended for proper induction seal



DETAIL THREAD
SCALE 4 : 1



SECTION D-D



DISCLAIMER

This specification does not relieve the customer of their ultimate responsibility for the determination of the appropriate container. It is the customer's responsibility to select the appropriate packaging based upon all information at their disposal including the specific application, regulatory compliance, product compatibility and shipping requirements. WE HEREBY DISCLAIM AND EXCLUDE ANY EXPRESS OR IMPLIED WARRANTIES, INCLUDING WITHOUT LIMITATION THE IMPLIED WARRANTIES OF MERCHANTABILITY AND FITNESS FOR A PARTICULAR PURPOSE.

DISTRIBUTED BY:



REF NO.:

DWG-Q20258

DESCRIPTION:

58-400 PP Smooth Top,
Smooth Side Cap