

3.5" SATA Drive Enclosure

3.5" eSATA / USB 2.0 SATA Drive Enclosure

SAT3510U2E

Instruction Manual



Actual product may vary from photo

INFO SAFE

StarTech.com

The Professionals' Source for Hard-to-Find Computer Parts

FCC Compliance Statement

This equipment has been tested and found to comply with the limits for a Class B digital device, pursuant to part 15 of the FCC Rules. These limits are designed to provide reasonable protection against harmful interference in a residential installation. This equipment generates, uses and can radiate radio frequency energy and, if not installed and used in accordance with the instructions, may cause harmful interference to radio communications. However, there is no guarantee that interference will not occur in a particular installation. If this equipment does cause harmful interference to radio or television reception, which can be determined by turning the equipment off and on, the user is encouraged to try to correct the interference by one or more of the following measures:

- Reorient or relocate the receiving antenna.
- Increase the separation between the equipment and receiver.
- Connect the equipment into an outlet on a circuit different from that to which the receiver is connected.
- Consult the dealer or an experienced radio/TV technician for help.

Use of Trademarks, Registered Trademarks, and other Protected Names and Symbols

This manual may make reference to trademarks, registered trademarks, and other protected names and/or symbols of third-party companies not related in any way to StarTech.com. Where they occur these references are for illustrative purposes only and do not represent an endorsement of a product or service by StarTech.com, or an endorsement of the product(s) to which this manual applies by the third-party company in question. Regardless of any direct acknowledgement elsewhere in the body of this document, StarTech.com hereby acknowledges that all trademarks, registered trademarks, service marks, and other protected names and/or symbols contained in this manual and related documents are the property of their respective holders.

Table of Contents

Introduction	1
Features	1
System Requirements	1
Contents	1
Installation and usage	2
Software Installation	2
Installing the hard drive in the enclosure	3
Connecting the enclosure to the Host computer	5
<i>Using eSATA</i>	5
<i>Using USB</i>	5
Using the One-Button Backup utility	6
Setting a hot-key sequence	6
Disconnecting SAT3510U2E from the Host computer	7
Specifications	8
Technical Support	9
Warranty Information	9

Introduction

Thank you for purchasing a StarTech.com 3.5" external drive case. Designed for 3.5" hard drives, this device allows you to quickly connect and disconnect your SATA hard drives, making data storage, backup, and file sharing easier than ever. The SAT3510U2E provides outstanding data transfer rates, based on eSATA or USB standards, as well as a One-Button Backup feature, that archives predefined data at the touch of a button.

Features

- One-Button Backup feature automates file backups and transfers (In USB mode, used with PC)
- Active 80mm cooling fan enhances heat dissipation and reduces temperature circulating around hard drive
- Durable aluminum housing helps prevent damage to the hard drive while in transit and provides additional cooling through heat dissipation
- Compatible with SATA (SATA/150) and SATA II (SATA/300) hard drives
- Supports remote wakeup and power management control
- Data transfer rates up to 3 Gbps (SATA 300, external eSATA cabling up to 6'(2m) using shielded cable)

System Requirements

- Host computer:
 - 266MHz or faster CPU
 - 64MB RAM
 - 1 available USB or eSATA port
 - Windows 98/Mac OS 9.1 or greater
- 3.5" SATA hard drive

Contents

This package should contain:

- 1 x External Aluminum 3.5 inch Drive Enclosure
- 1 x USB 2.0 Cable (A-B)
- 1 x Power Adapter
- 1 x Stand
- 1 x Screw kit
- 1 x CD (W98SE Driver)
- 1 x User Manual

Installation and usage



WARNING: Hard drives require careful handling, especially when being transported. If you are not careful with your hard disk, lost data may result. Always handle your hard drive and storage device with caution.



WARNING: Hard drives, like all computer equipment can also be severely damaged by static electricity. Be sure that you are properly grounded before opening your computer case or touching any components. StarTech.com recommends that you wear an anti-static strap when installing any computer equipment. If an antistatic strap is unavailable, discharge yourself of any static electricity build-up by touching a large grounded metal surface (such as the computer case) for several seconds.



WARNING: Do not disconnect any cables or power sources while the hard drive is active. This can result in data loss and possible damage to the hard drive.



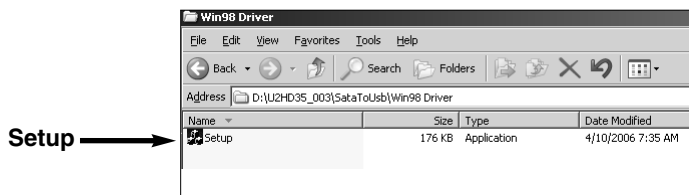
WARNING: Always make sure that your hard drive is fully spun down before removing the device.

Software Installation

Please complete the software installation prior to connecting the removable hard drive enclosure to the host PC.

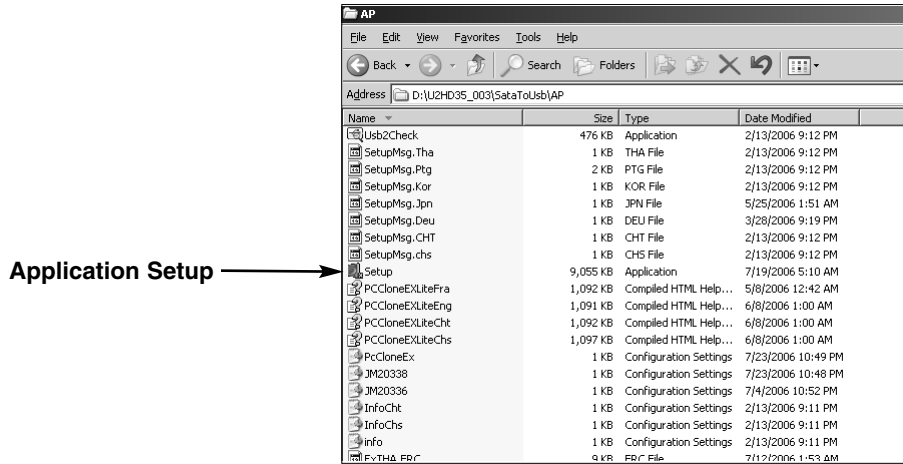
The following description includes the steps necessary to install drivers for SAT3510U2E for use with Windows 98SE. If you are using Windows ME, 2000, XP, 2003 Server or Vista, please skip to **step #5**.

1. Power on the computer that will be used to connect to the hard drive enclosure.
2. Insert the driver CD provided into the computer's CD/DVD-ROM drive.
3. From the Windows Desktop, double-click on the **My Computer** icon. Once the **My Computer** window has opened, locate and double-click on the CD/DVD-ROM drive icon.
4. To locate the driver file, browse to **U2HDD\U2HDD35_003\SataToUsb\Win98driver**, and double-click on the **Setup** file. Follow all prompts to complete driver installation.



Instruction Manual

5. If you wish to use the One-Button Backup feature with your removable drive, it will be necessary to install the Utility application located on the Driver CD. To do so, browse to **U2HDD\U2HDD35_003\SataToUsb\AP**, and double-click on the **Setup** icon, as depicted:



Follow all prompts, to complete installation. Once completed, please reboot the computer for the changes to take effect. Upon successful installation, the backup utility (PC Clone EX Lite) will be available for use.

Installing the hard drive in the enclosure



Rear Panel

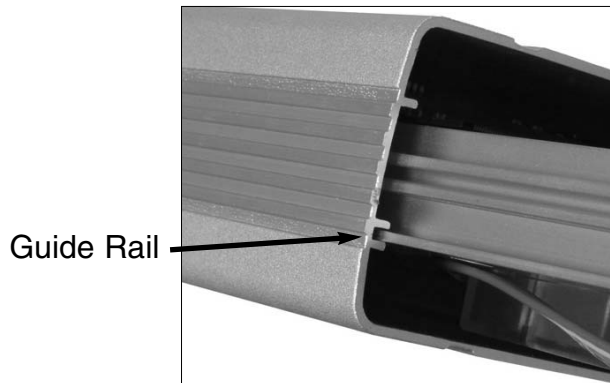


Front Panel

1. Place the enclosure on a flat, stable surface.
2. Remove the thumbscrews from the rear panel of the enclosure, and remove the rear panel faceplate from the casing.
3. Slide the front panel and tray out of the enclosure.
4. Connect the SATA power and data connectors to the power and data ports on the rear panel of the SATA hard drive.

Instruction Manual

5. Gently seat the 3.5" SATA hard drive in the enclosure, so that the hard drive label is facing upward relative to the enclosure tray, and the data and power connections are facing the rear panel of the enclosure. **Please note:** Due to the compact design of SAT3510U2E, the hard drive will fit very snugly within the enclosure.
6. Ensure that the mounting holes at the base of the hard drive are aligned with the four pre-drilled holes on the drive enclosure tray. Using the screws provided, fasten the drive to the tray.
7. Align the guide rails located on the sides of the drive tray, with the guide rail located on the inside of the casing. Gently slide the tray (with drive installed) into the casing, and replace the rear panel faceplate that was removed in **Step 2**.



7. Fasten the rear panel to the enclosure, using the screws removed in **Step 2**.

Connecting the enclosure to the Host computer

Using eSATA

1. Insert the connector from one end of the eSATA cable into the rear eSATA port (marked **S-ATA II**) of the drive enclosure.
2. Connect the remaining end of the eSATA cable (sold separately) to an available eSATA port on the host computer. If the host computer does not have an eSATA connector available, or you require an eSATA cable, please see **Accessories available from StarTech.com** on page 9.
3. Power on the host computer, once the enclosure has been connected.
4. Press the Power button on the front panel of the drive enclosure.

Using USB

When used with a computer running Windows 98SE or above and connected via USB, the drive enclosure can be connected and disconnected while the computer is running:

1. Insert the type 'B' connector provided by the USB cable (included) into the rear USB port (marked USB 2.0) of the drive enclosure.
2. Connect the remaining end of the USB cable to an available USB port on the host computer or to a USB hub connected to the host computer.
3. Connect the external power adapter provided (12V DC, 1.7A) to an available power outlet. Insert the remaining (cylindrical) connector to the port marked **DC IN** on the rear panel of the hard drive enclosure.
4. Press the Power button on the front panel of the drive enclosure. The drive is now ready for use, and should be visible under **My Computer**.

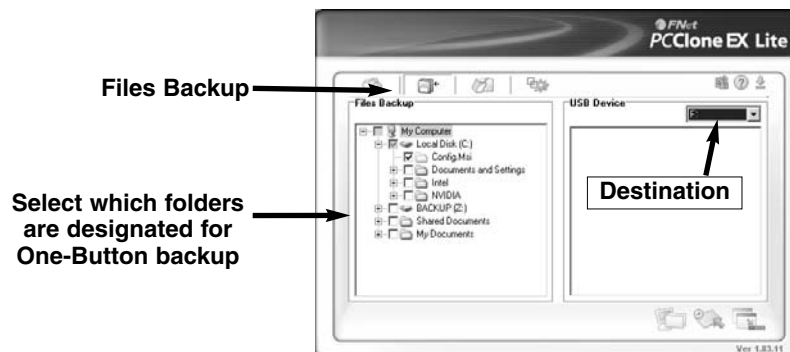
Using the One-Button Backup utility

Before the One-Button Backup will work, you are required to configure the source and destination folders for backup.

Setting the backup source and destination

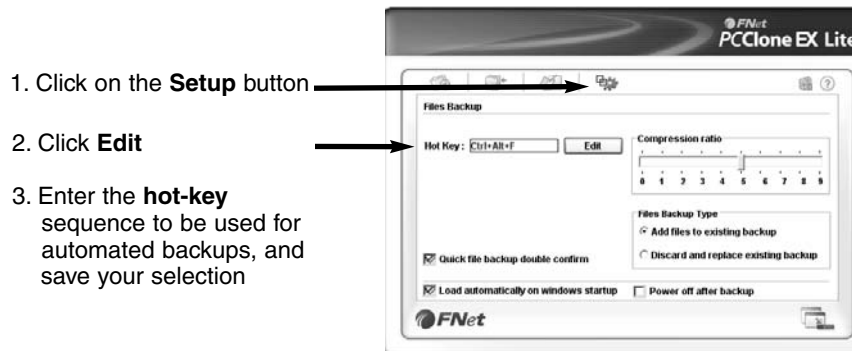
Following installation, there should be an icon for *PCClone EX Lite* located on your desktop. If this is not the case, please click on the **Start** button, followed by **All Programs** to locate the utility.

1. Launch the *PCClone EX Lite* utility.
2. Click on the **Files Backup** button.
3. Using the check boxes provided, select which folders will be included in automatic backups.
4. Select the intended destination of the backed up files, using the drop-down menu provided.



Setting a hot-key sequence

If you wish to use a hot-key sequence to launch automated backups from your keyboard:




1. Click on the **Setup** button
2. Click **Edit**
3. Enter the **hot-key** sequence to be used for automated backups, and save your selection

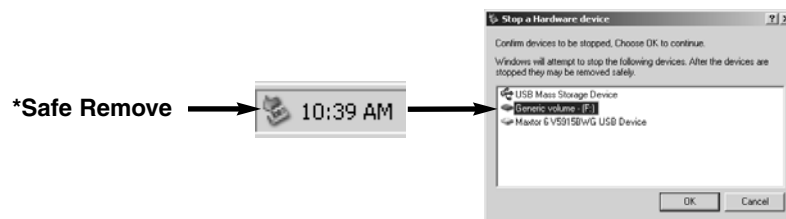
Once the backup utility has been configured accordingly, you will be able to launch an automated backup session by pressing the button marked **BACK UP**, or entering the customized hot-key sequence.

PCClone EX Lite offers a wide variety of configuration options that can help customize your data backups. For further information, please click on the **Help** button.

Disconnecting SAT3510U2E from the host computer

 **WARNING:** Do not disconnect any cables or power sources while the hard drive is active. This can result in data loss and possible damage to the hard drive. Before disconnection, please ensure that any programs that were accessing the enclosed drive have been terminated.

1. In Windows, click on the **Safe Remove** icon located in the taskbar, and select the connected enclosure from the menu provided, then click **Stop**. From the menu that appears next (pictured below), select the device to disconnect, and click **OK**.



2. Once the connected hard drive activity has terminated, it is safe to remove the enclosure from the host computer, by unplugging the eSATA or USB cable from the host computer.

Specifications

Bus Type	USB / eSATA
Form Factor	3.5 inch SATA HD Drive Enclosure
Connectors	USB Type B Female eSATA 7 pin
Bus Type	12VDC, 1.7A or higher
Power Adapter	12VDC, 1.7A or higher
Maximum Data Transfer Rate	USB 480Mbps eSATA 3 Gb/s
Chipset	JMicro JM20336
Operating System Support	Windows: 98SE (Setup driver CD incl.), ME, 2000, XP, Vista MAC OS: 9.0.x, 9.2.1, 10.1.2 to 10.3.x
Product Dimensions	198 x 118 x 42 mm (7.8 x 4.65 x 1.65") (L x W x H)
Product Weight	410 g

Accessory Products from StarTech.com

Contact your local StarTech.com dealer or visit www.startech.com for cables or other accessories that will help you get the best performance out of your new product.

USB2HAB10

10 ft High Speed Certified USB 2.0 Cable

USB2HAB6

6 ft High Speed Certified USB 2.0 Cable

USB2HAB15

15 ft High Speed USB 2.0 Cable

ESATA3

3 Ft Shielded External eSATA Cable M/M

ESATA6

6' Shielded External eSATA Cable M/M

SATA2ESATA6

6 Ft Shielded External eSATA to SATA Cable M/M

ESATAPLATE1

1 ft eSATA Data Internal to External Slot Plate

Technical Support

StarTech.com's lifetime technical support is an integral part of our commitment to provide industry-leading solutions. If you ever need help with your product, visit www.startech.com/support and access our comprehensive selection of online tools, documentation, and downloads.

Warranty Information

This product is backed by a one-year warranty. In addition, StarTech.com warrants its products against defects in materials and workmanship for the periods noted, following the initial date of purchase. During this period, the products may be returned for repair, or replacement with equivalent products at our discretion. The warranty covers parts and labor costs only. StarTech.com does not warrant its products from defects or damages arising from misuse, abuse, alteration, or normal wear and tear.

Limitation of Liability

In no event shall the liability of StarTech.com Ltd. and StarTech.com USA LLP (or their officers, directors, employees or agents) for any damages (whether direct or indirect, special, punitive, incidental, consequential, or otherwise), loss of profits, loss of business, or any pecuniary loss, arising out of or related to the use of the product exceed the actual price paid for the product. Some states do not allow the exclusion or limitation of incidental or consequential damages. If such laws apply, the limitations or exclusions contained in this statement may not apply to you.

About StarTech.com

StarTech.com is “The Professionals’ Source for Hard-to-Find Computer Parts”. Since 1985, we have been providing IT professionals with the quality products they need to complete their solutions. We offer an unmatched selection of computer parts, cables, server management solutions and A/V products and serve a worldwide market through our locations in the United States, Canada, the United Kingdom and Taiwan.

Visit **www.startech.com** for complete information about all our products and to access exclusive interactive tools such as the Parts Finder and the KVM Reference Guide. StarTech.com makes it easy to complete almost any IT solution. Find out for yourself why our products lead the industry in performance, support, and value.