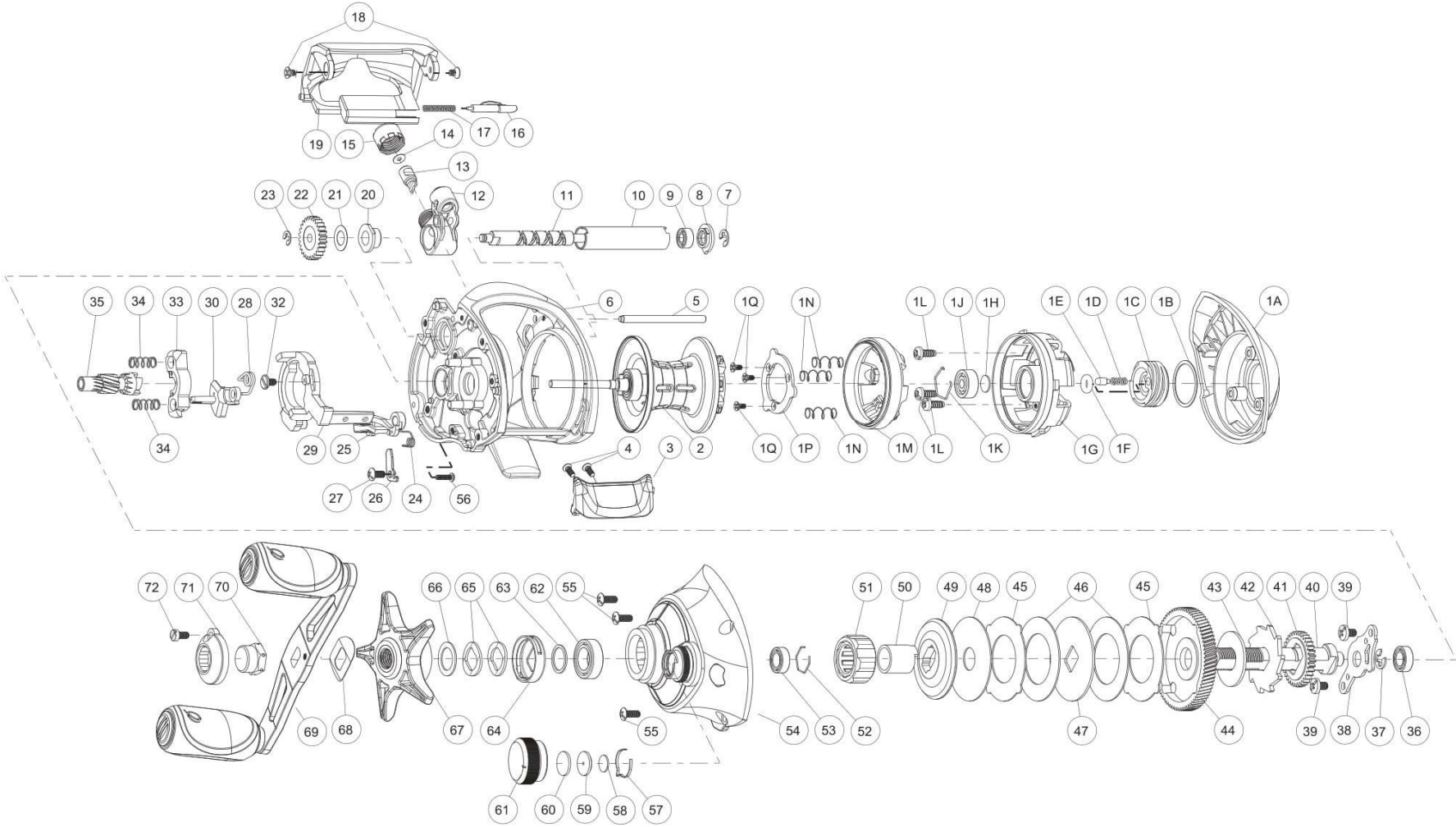


QUANTUM®



Quantum 2021 Accurist AT101HPTA Part List

| Key No. | Description | Part No. AT101HPTA | Q'TY | Key No. | Description | Part No. AT101HPTA | Q'TY |
|---------|--|-----------------------|------|---------|--|-----------------------|------|
| 1 | Palm Side Cover Kit include | WA423-71 | 1 | 29 | Release Slider | ZX039-01 | 1 |
| | 1A - Palm Side Cover | WA023-71 | 1 | 30 | Flippin Switch | WA087-01 | 1 |
| | 1B - Centrifugal Dial Washer | SB111-01 | 1 | 31 | Release Slider Screw | DX125-01 | 1 |
| | 1C - Centrifugal Dial | TB026-03 | 1 | 32 | Pinion Yoke | TB025-01 | 1 |
| | 1D - Centrifugal Dial Click Spring | YW114-01 | 1 | 33 | Yoke Spring | GX040-01 | 2 |
| | 1E - Centrifugal Dial Click Pawl | PW098-01 | 1 | 34 | Pinion Gear | WA011-02 | 1 |
| | 1F - Centrifugal Dial Frection Ring | SB105-01 | 1 | 35 | Crank Shaft Ball Bearing - L | SW017-06 | 1 |
| | 1G - Spool Cover | WA051-01 | 1 | 36 | E-Clip | QW120-01 | 1 |
| | 1H - Spool Tension Shim | QW032-04 | 1 | 37 | Crank Shaft Retainer | VA002-01 | 1 |
| | 1J - Ball Bearing - Spool Shaft (Palm) | QV017-04 | 1 | 38 | Crank Shaft Retainer Screw | JX107-02 | 2 |
| | 1K - Clip Ring | HV080-01 | 1 | 39 | Crank Shaft | YW008-06 | 1 |
| | 1L - Spool Cover Screw | WW107-01 | 3 | 40 | O/S Drive Gear | DW112-01 | 1 |
| | 1M - Brake Ring Assembly | WA342-01 | 1 | 41 | Trip Ratchet | PW083-02 | 1 |
| | 1N - Spring - Brake Ring Slider | DW070-01 | 3 | 42 | Trip Ratchet Washer | YW111-01 | 1 |
| | 1P - Retainer - Brake Ring Slider Spring | VA129-02 | 1 | 43 | Drive Gear | WA012-04 | 1 |
| | 1Q - Retainer Screw | DW107-01 | 3 | 44 | Drag Key Washer | PW048-01 | 2 |
| 2 | Spool Assembly | YI321-01 | 1 | 45 | Drag Disc - A | PW059-02 | 2 |
| 3 | Thumb Bar | ZI009-01 | 1 | 46 | Drag "D" Washer | YW045-01 | 1 |
| 4 | Thumb Bar Screw | YB107-02 | 2 | 47 | Drag Disc - B | YW059-01 | 1 |
| 5 | Stabilizer Bar | VA061-01 | 1 | 48 | Drag Washer | VA045-01 | 1 |
| 6 | Frame | WA001-71 | 1 | 49 | One Way Clutch Sleeve | UX052-01 | 1 |
| 7 | E-Clip | NX092-01 | 1 | 50 | One Way Clutch | VA063-01 | 1 |
| 8 | Bearing Retainer | DW067-01 | 1 | 51 | Spool Tension Knob Ball Bearing Retainer | EB080-01 | 1 |
| 9 | Worm Shaft Ball Bearing | XX117-04 | 1 | 52 | Tension Knob Ball Bearing | SW017-06 | 1 |
| 10 | Worm Shaft Guide | SB016-01 | 1 | 53 | Gear Side Cover Assembly | WA324-71 | 1 |
| 11 | Worm Shaft | HV072-01 | 1 | 54 | Gear Side Cover Screw-A | VA053-01 | 3 |
| 12 | Line Guide Carrier | VA047-01 | 1 | 55 | Gear Side Cover Screw-B | ZW053-03 | 1 |
| 13 | Line Guide Pawl | ZW006-03 | 1 | 56 | Tension Knob Click Spring | PW114-01 | 1 |
| 14 | Line Guide Carrier Washer | BV035-01 | 1 | 57 | Washer - Spool Tension | QW032-04 | 1 |
| 15 | Line Guide Carrier Screw | ZW007-01 | 1 | 58 | Collar - Spool Tension | VA081-01A | 1 |
| 16 | Side Covr Locking Lever | WA119-01 | 1 | 59 | Spool Cushion Washer | VA082-01 | 1 |
| 17 | Spring - Locking Lever | ZW096-01 | 1 | 60 | Spool Tension Knob | YI033-01 | 1 |
| 18 | Screw | CF107-02 | 2 | 61 | Crank Shaft Ball Bearing | TW058-09 | 1 |
| 19 | Front Support | ZI099-01 | 1 | 62 | Crank Shaft Ball Bearing Washer | TW035-02 | 1 |
| 20 | Worm Shaft Bushing - Gear Side | PW068-01 | 1 | 63 | Drag Click Spring Assembly | YX4114-01 | 1 |
| 21 | O/S Pinion Gear Washer | EX035-01 | 1 | 64 | Spring "D" Washer | JX046-01 | 2 |
| 22 | O/S Pinion Gear | DW085-01 | 1 | 65 | Star Drag Washer | ZW032-01 | 1 |
| 23 | E-Clip | NX090-01 | 1 | 66 | Star Drag | YI055-01 | 1 |
| 24 | Kick Lever Spring | ZX097-01 | 1 | 67 | Handle Washer | NX054-01 | 1 |
| 25 | Kick Lever | YW077-01 | 1 | 68 | Handle Assembly | ZI318-01 | 1 |
| 26 | Kick Lever Guide Plate | VA161-01 | 1 | 69 | Handle Nut | DW003-08 | 1 |
| 27 | Kick Lever Guide Plate Screw | JX107-02 | 1 | 70 | Handle Nut Cap | DW034-05 | 1 |
| 28 | Release Slider Spring | ZX104-01 | 1 | 71 | Handle Nut Cap Screw | DW050-02 | 1 |