

# NM2-2RTLDC

## 2" M2 Can-less Trimless LED Downlight

Source: 8W or 10W LED  
750lm or 900lm

Type
Project
Catalog No.
Notes

### PRODUCT DESCRIPTION

2" M2 trimless downlights features quality and convenience with easy installation for insulated or non-insulated applications. Each installation requires a mud plate that mounts to drywall and hold LED luminaire to ceiling without any housing.

### FEATURES

- No housing required - IC Airtight rated
- Easy installation for remodel or new construction applications
- Trimless mud ring required (NM2-TLMR-R)
- Quick disconnect allows for extended lengths
- Delivering up to 900 lumens
- 2700K, 3000K or 4000K @ 90+ CRI
- Triac or ELV dimming
- 5-year limited warranty
- cETLus Listed for Damp Locations

### SPECIFICATION

**Construction:** Die-cast aluminum trims with a powder-coated finish.

**Air Flow Restriction:** Luminaire has factory installed gasket to restrict airflow from room into ceiling plenum to <2CFM (cubic feet per minute) in accordance with ASTM 283 airtight requirements.

**Clearance:** IC rated luminaires are rated for direct contact with insulation (not spray foam insulation), no minimum clearance is required.

**Junction Box:** Pre-wired junction box includes quick connect to LED fixtures for ease of installation. Junction box includes two 1/2" trade size knockout and snap on cover with 18" quick connect wire. Luminaire includes 6" quick connect wire.

**Maximum length between luminaire and driver is 40'. For longer remote driver remote run length, consult factory.**

**Mounting:** No housing is required, patent pending mud ring (ordered separately) secures luminaire to ceiling.

### ELECTRICAL

**Input Voltage:** 120V  
**Lumens / Wattage:** 750lm / 8W or 900lm / 10W  
**Color Temperature:** 2700K, 3000K or 4000K  
**Color Rendering Index:** 90+ CRI  
**Operating Temperature:** 0-30°C  
**Dimming:** Triac or ELV  
[Click Here](#) or check complete dimmer list at [www.NoraLighting.com](http://www.NoraLighting.com) in the "Compatibility" page under "Resources" tab

### ACCESSORIES

**NM2-TLMR-R:** Trimless Mud Ring (required)  
**NF-R246:** Universal New Construction Frame-In  
**NFC-R275:** New Construction Frame-In with Collar  
**NMA-EW-4:** 4' Quick Connect Linkable Extension Cable  
**NMA-EW-10:** 10' Quick Connect Linkable Extension Cable  
**NEPK-23LEDUNV:** 23W Emergency with Remote Test Switch  
**NEPKA-20/23LEDRTS:** Ribbon Test Switch for NEPK-23LEDUNV

**Emergency:** Luminaire is compatible with NEPK-23LEDUNV (ordered separately). Remote mounted battery operates luminaire for 90 minute emergency operation with a fully charged battery. Emergency includes remote test switch, ribbon test switch accessory (NEPKA-20/23LEDRTS) ordered separately.

### LABELS AND LISTINGS

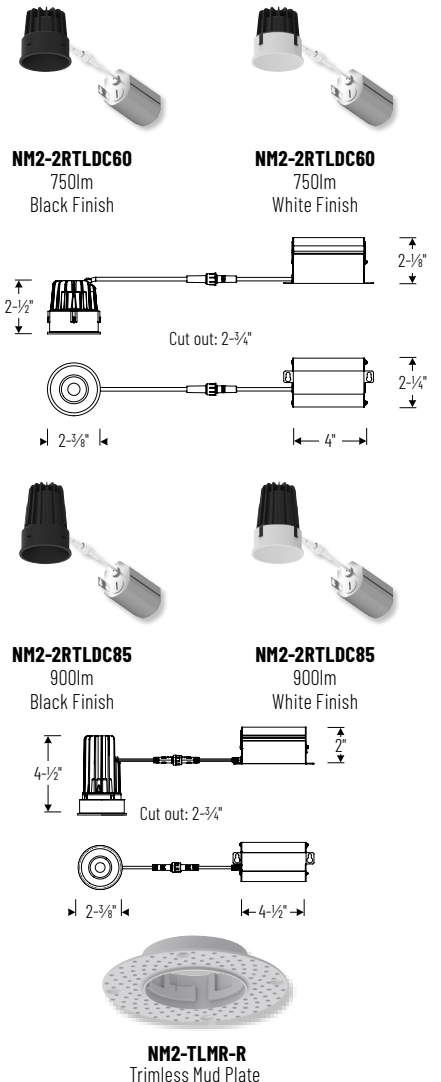
- cETLus Listed for Damp Locations
- [5-Year Limited Warranty](#)
- FCC compliant
- Certified to the high efficacy requirements of California Title 24 JA8-2025



Performance Data		
Part Number	Lumens	CCT
NM2-2RTLDC6027MPW	700lm	2700K
NM2-2RTLDC8527MPW	817lm	2700K
NM2-2RTLDC6030MPW	746lm	3000K
NM2-2RTLDC8530MPW	843lm	3000K
NM2-2RTLDC6040MPW	774lm	4000K
NM2-2RTLDC8540MPW	935lm	4000K

Delivered lumens will vary depending on finish

### PRODUCT IMAGES AND DIMENSIONS



## 2" M2 Can-less Trimless LED Downlight

Lumens / Wattage	Color Temperature	Finish
NM2-2RTLDC60 = 750lm / 8W	27 = 2700K	BB = Black
NM2-2RTLDC 85 = 900lm / 10W	30 = 3000K	MPW = White
	40 = 4000K	

## 2" M2 Trimless Mud Ring (Required)

Description
NM2-TLMR-R = Trimless Mud Ring

## Optional Extension Cables

Description
NF-R246 = Universal New Construction Frame-In
NFC-R275 = New Construction Frame-In with Collar
NMA-EW-4 = 4' Quick Connect Extension Cable
NMA-EW-10 = 10' Quick Connect Extension Cable
NEPK-23LEDUNV = 23W Emergency LED Driver w/ Remote Test Switch
NEPKA-20/23LEDRTS = Ribbon Test Switch for NEPK-23LEDUNV

Example: NM2-2RTLDC6030MPW / NM2-TLMR-R = 2" M2 Can-less Trimless LED Downlight, 750lm / 8W, 3000K, White Finish

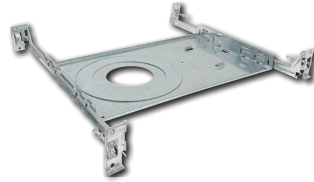
# NM2-2RTLDC

## 2" M2 Can-less Trimless LED Downlight Accessories

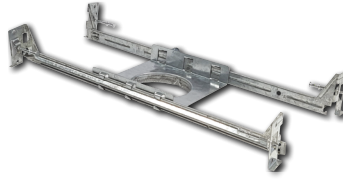
Type	
Project	
Catalog No.	
Notes	



Trimless Mud Plate



Universal New Construction Frame-In



New Construction Frame-In with Collar



Quick Connect Extension Linkable Cables

### NM2-TLMR-R

Mounts trimless downlight with no exposed flange and no extension beyond ceiling plane.

### NF-R246

Universal new construction frame-in can be used to assist installing can-less recessed downlighting.

### NFC-R275

New construction frame-in can be used to assist installing can-less recessed downlighting.

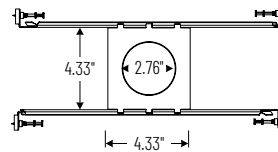
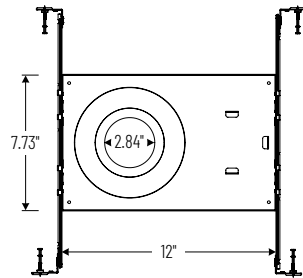
### NMA-EW-4

4' Cable

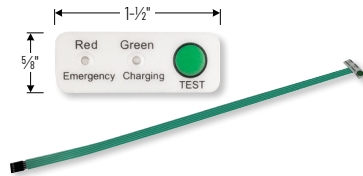
### NMA-EW-10

10' Cable

Use to extend the length between luminaire and driver enclosure. Can be connected together to create custom lengths. Maximum length between luminaire and driver is 40'. For longer remote driver remote run length, consult factory.



23W Emergency LED Driver with Remote Test Switch



Ribbon Test Switch for NEPK-23LEDUNV

### NEPK-23LEDUNV

120-277V Emergency battery operates luminaire for 90 minute emergency operation with a fully charged battery. Requires 24 hours to charge the battery.

### NEPKA-20/23LEDRTS

Ribbon test switch replaces remote test switch included with emergency driver. Double sided tape is pre-installed.

# PHOTOMETRICS

## 2" M2 Trimless LED Downlight , 750lm / 8W

Type

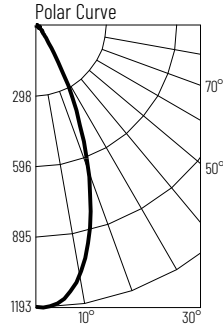
Project

Catalog No.

Notes

### Test Information

Test Number: NTR2004R1  
 Part Number: NM2-2RTLDC6027MPW  
 Beam Spread: 42° Narrow Flood  
 Lumens: 700lm  
 Wattage: 7.86W  
 Efficacy: 89lpw  
 CCT / CRI: 2700K / 90 CRI  
 Spacing Criteria (0°-180°): 0.7  
 Spacing Criteria (90°-270°): 0.68



### Illuminance at a Distance

Distance from Luminaire	FC at Nadir	Beam Diameter
4'	74.4fc	3'-1"
6'	33fc	4'-7"
8'	18.6fc	6'-2"
10'	11.9fc	7'-8"
12'	8.3fc	9'-4"

### Zonal Lumen Summary

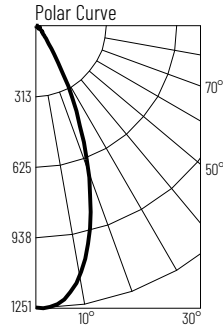
Zone	Lumens	% Luminaire
0-30	543	77.7
0-40	617	88.1
0-60	679	97.1
0-90	700	100
90-180	0	0
0-180	700	100

### Candela Table

Vertical Angles	Candela
0	1190
5	1163
15	873
25	422
35	109
45	43

### Test Information

Test Number: NTR2005R1  
 Part Number: NM2-2RTLDC6030MPW  
 Beam Spread: 43° Narrow Flood  
 Lumens: 746lm  
 Wattage: 7.83W  
 Efficacy: 95lpw  
 CCT / CRI: 3000K / 90 CRI  
 Spacing Criteria (0°-180°): 0.7  
 Spacing Criteria (90°-270°): 0.7



### Illuminance at a Distance

Distance from Luminaire	FC at Nadir	Beam Diameter
4'	77.9fc	3'-1"
6'	34.6fc	4'-8"
8'	19.5fc	6'-2"
10'	12.5fc	7'-10"
12'	8.7fc	9'-4"

### Zonal Lumen Summary

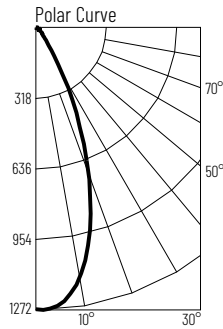
Zone	Lumens	% Luminaire
0-30	578	77.5
0-40	657	88.1
0-60	725	97.2
0-90	746	100
90-180	0	0
0-180	746	100

### Candela Table

Vertical Angles	Candela
0	1246
5	1216
15	938
25	455
35	120
45	47

### Test Information

Test Number: NTR2006R1  
 Part Number: NM2-2RTLDC6040MPW  
 Beam Spread: 44° Narrow Flood  
 Lumens: 774lm  
 Wattage: 7.76W  
 Efficacy: 100lpw  
 CCT / CRI: 4000K / 90 CRI  
 Spacing Criteria (0°-180°): 0.72  
 Spacing Criteria (90°-270°): 0.72



### Illuminance at a Distance

Distance from Luminaire	FC at Nadir	Beam Diameter
4'	79.3fc	3'-2"
6'	35.3fc	4'-10"
8'	19.8fc	6'-6"
10'	12.7fc	8'-1"
12'	8.8fc	9'-8"

### Zonal Lumen Summary

Zone	Lumens	% Luminaire
0-30	605	78.3
0-40	686	88.6
0-60	752	97.2
0-90	774	100
90-180	0	0
0-180	774	100

### Candela Table

Vertical Angles	Candela
0	1269
5	1245
15	990
25	481
35	126
45	46

### Lumen Output Multipliers

Finish: Matte Black (0.86), Matte Powder White (1.00)

# PHOTOMETRICS

## 2" M2 Trimless LED Downlight , 900lm / 10W

Type

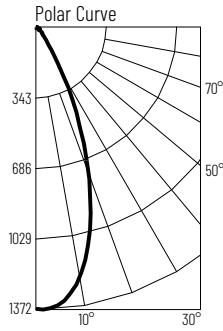
Project

Catalog No.

Notes

### Test Information

Test Number: NTR2127R1  
 Part Number: NM2-2RTLDC8527MPW  
 Beam Spread: 43° Narrow Flood  
 Lumens: 817lm  
 Wattage: 9.63W  
 Efficacy: 85lpw  
 CCT / CRI: 2700K / 90 CRI  
 Spacing Criteria (0°-180°): 0.7  
 Spacing Criteria (90°-270°): 0.7



### Illuminance at a Distance

Distance from Luminaire	FC at Nadir	Beam Diameter
4'	85.8fc	3'-2"
6'	38.1fc	4'-10"
8'	21.4fc	6'-4"
10'	13.7fc	7'-11"
12'	9.5fc	9'-6"

### Zonal Lumen Summary

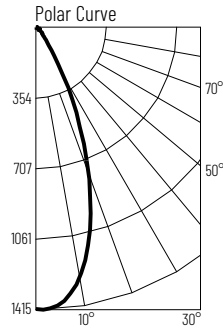
Zone	Lumens	% Luminaire
0-30	642	78.6
0-40	735	90.0
0-60	796	97.3
0-90	816	100
90-180	0	0
0-180	817	100

### Candela Table

Vertical Angles	Candela
0	1372
5	1341
15	1029
25	511
35	136
45	47

### Test Information

Test Number: NTR2128R1  
 Part Number: NM2-2RTLDC8530MPW  
 Beam Spread: 43° Narrow Flood  
 Lumens: 843lm  
 Wattage: 9.52W  
 Efficacy: 89lpw  
 CCT / CRI: 3000K / 90 CRI  
 Spacing Criteria (0°-180°): 0.7  
 Spacing Criteria (90°-270°): 0.7



### Illuminance at a Distance

Distance from Luminaire	FC at Nadir	Beam Diameter
4'	88.4fc	3'-2"
6'	39.3fc	4'-10"
8'	22.1fc	6'-4"
10'	14.1fc	7'-11"
12'	9.8fc	9'-5"

### Zonal Lumen Summary

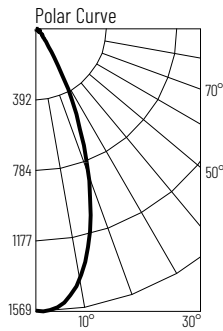
Zone	Lumens	% Luminaire
0-30	662	78.6
0-40	758	90.0
0-60	820	97.3
0-90	841	99.8
90-180	2	0.2
0-180	843	100

### Candela Table

Vertical Angles	Candela
0	1415
5	1382
15	1061
25	526
35	140
45	48

### Test Information

Test Number: NTR2129R1  
 Part Number: NM2-2RTLDC8540MPW  
 Beam Spread: 43° Narrow Flood  
 Lumens: 935lm  
 Wattage: 9.55W  
 Efficacy: 98lpw  
 CCT / CRI: 4000K / 90 CRI  
 Spacing Criteria (0°-180°): 0.7  
 Spacing Criteria (90°-270°): 0.7



### Illuminance at a Distance

Distance from Luminaire	FC at Nadir	Beam Diameter
4'	98.0fc	3'-2"
6'	43.6fc	4'-10"
8'	24.5fc	6'-3"
10'	15.7fc	7'-11"
12'	10.9fc	9'-5"

### Zonal Lumen Summary

Zone	Lumens	% Luminaire
0-30	734	78.6
0-40	841	90.0
0-60	910	97.3
0-90	933	99.8
90-180	2	0.2
0-180	935	100

### Candela Table

Vertical Angles	Candela
0	1569
5	1533
15	1176
25	584
35	156
45	53

### Lumen Output Multipliers

Finish: Matte Black (0.87), Matte Powder White (1.00)