

Raise-A-Ring™

Closest Flange Extension Ring

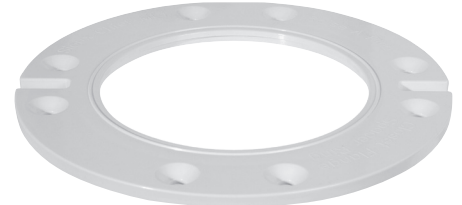
- Build up existing flange when added subfloor, tile, etc., leaves flange at or below floor level
- Stack rings for additional height



Hanger card packaging for counter areas.



886-R



886-RQ

SUPPLY

DRAINAGE

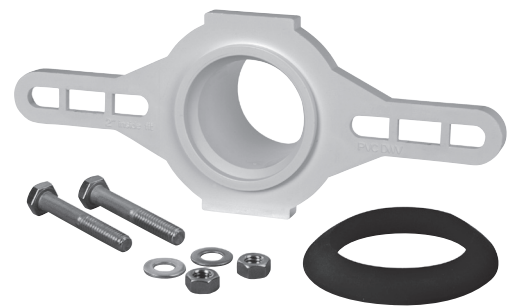
SUPPORT

APPENDIX

Item No	Description	Pkg	Min Qty	Case Qty
886-R	7/16"-thick flange extension ring, carded	C*	20	20
886-411	Raise-A-Ring Kit: One 886-R ring with closet bolts and two shims, bagged	C*	20	20
886-RQ	1/4"-thick flange extension ring	C*	20	20
886-RQK	Raise-A-Ring Kit: Three 886-RQ rings with closet bolts, bagged	B*	25	25

Urinal Flange Kit

- Unique inside fit connection allows pipe to be cut flush with finished wall
- Kit includes: stainless steel bolts, nuts, washers and gaskets
- Horizontal slots fit 3½" - 7" mounting centers



868-7P

PVC Item No	ABS Item No	Description	Pkg	Min Qty	Case Qty
868-5P	868-5A	2" hub connection urinal flange kit	B*	10	10
868-9P	868-9A	2" spigot connection urinal flange kit	B*	10	10
868-7P	868-7A	2" inside-fit connection urinal flange kit	B*	10	10