

# vibration

*Vibrazioni cromatiche*

**unica**



## vibration

Colore e materia sono le coordinate progettuali della collezione. Vibration sperimenta un percorso innovativo nella progettazione grafica ceramica, incentrato sulla ricerca di superfici ad alto contenuto decorativo. Impreziosita dalla materia ceramica, questa collezione si pone l'obiettivo di "divertire" e inventare gli spazi con i suoi sei differenti patterns e la sua grande varietà cromatica. Il risultato è un prodotto in 2 formati: il 10x30, il 10x60, tutti combinabili tra loro.

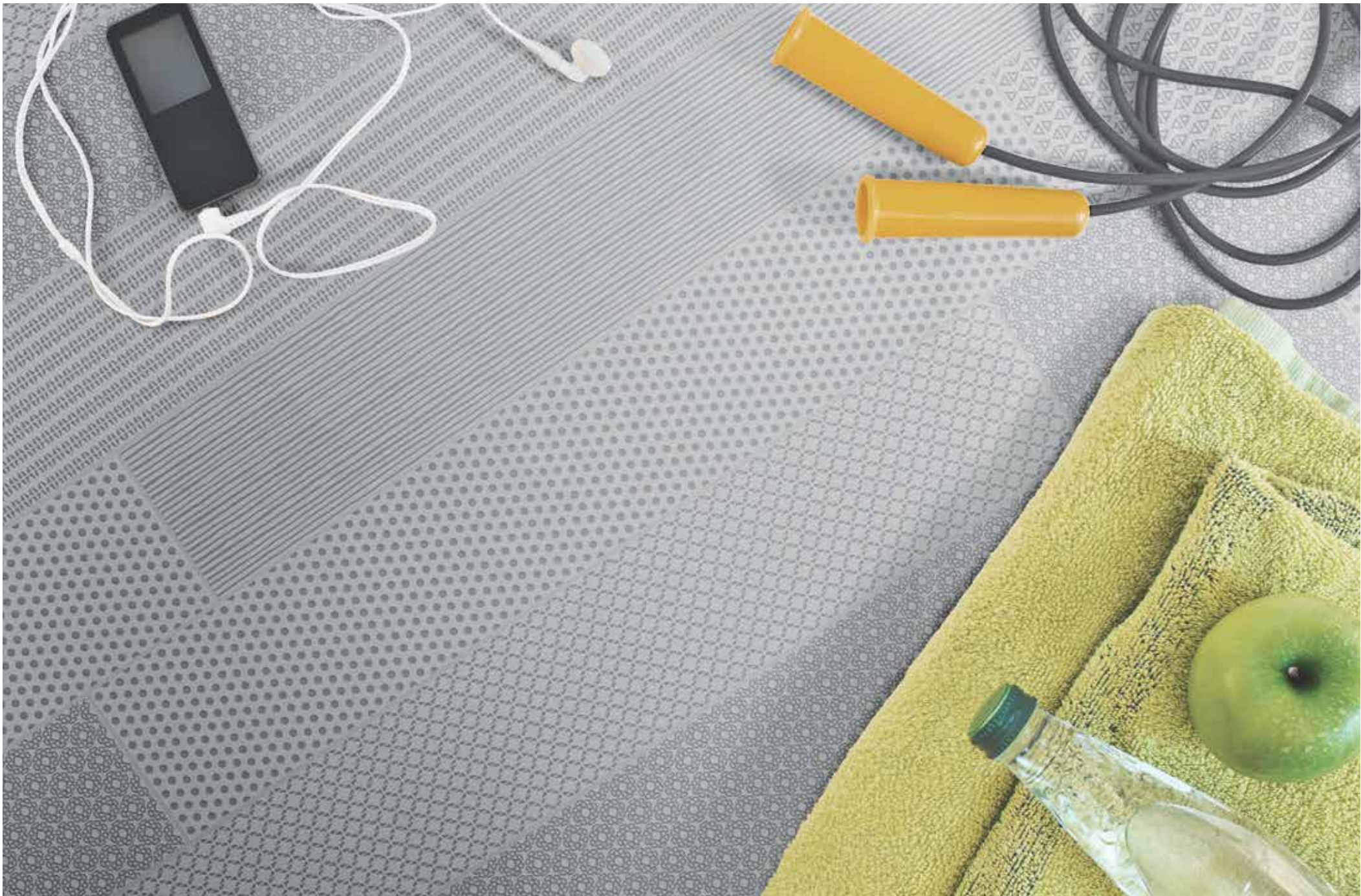
*Colour and ceramic materials are the design coordinates of this collection.*

*Vibration experiences an innovative course, concentrating the research on the ceramic surface with a highly decorative concept.*

*Embellished by the decorative structures, the 6 mixed geometrical patterns and the wide range of colours, this collection is conceived to express infinite enjoyable possibilities for young, fresh and dynamic environments.*

*The collection comes in the sizes 10x30cm/4''x24'' and 10x60cm/4''x24''.*





Vibration Grey 10x60 cm / 4"x24"



**Pattern essenziali su superfici in tonalità per giocare con le forme e i colori**  
*Essential toned surface patterns play with shapes and colours*

Vibration Red\_Vibration Orange\_Vibration Beige\_Vibration Black 10x60 cm / 4"x24"



Vibration Beige\_ Vibration Grey\_ Vibration White 10x60 cm / 4"x24"

# notes

A series of horizontal dashed lines for taking notes.



Vibration Brown 10x60 cm / 4"x24"

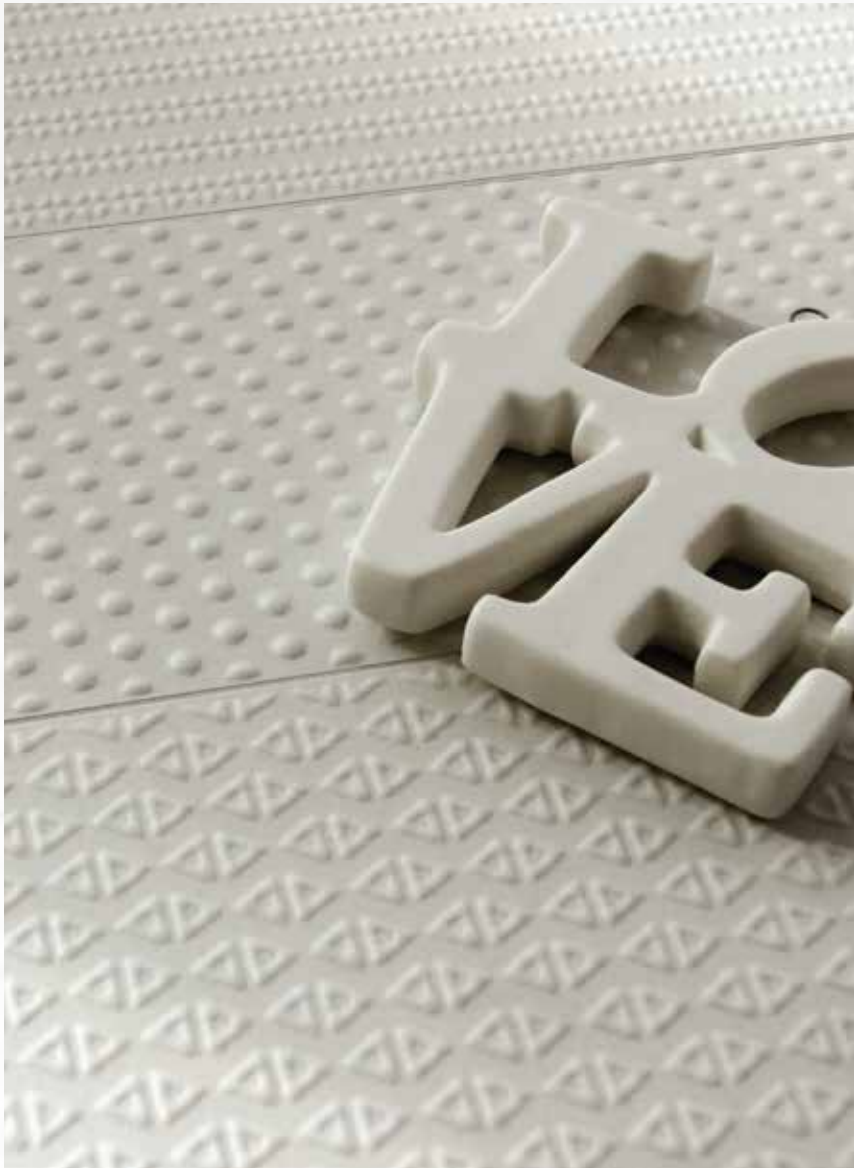


**Un mix di decorazioni geometriche per soluzioni semplici e creative**  
*A mix of geometric decorations for simple and creative solutions.*





Vibration White\_Vibration Mint\_Vibration Purple\_Vibration Blue\_Vibration Dark Blue 10x30 cm / 4"x12"



# notes

.....

.....

.....

.....

.....

.....

.....

.....

.....

.....

.....

.....

.....

.....

.....

.....

Vibration White 10x60 cm / 4"x24"

# vibration



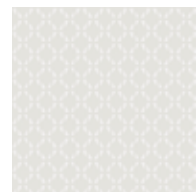
10x30 cm / 4"x12"



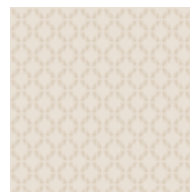
10x60 cm / 4"x24"

Spessore 1 cm

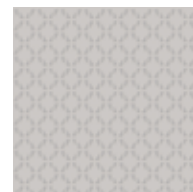
Thickness 1 cm / 0,39"



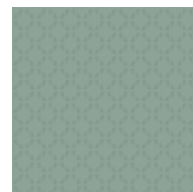
Vibration White  
10x60cm / 4"x 24"  
10x30 / 4"x12"



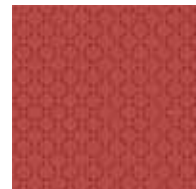
Vibration Beige  
10x60cm / 4"x 24"  
10x30 / 4"x12"



Vibration Grey  
10x60cm / 4"x 24"  
10x30 / 4"x12"



Vibration Sage  
10x60cm / 4"x 24"  
10x30 / 4"x12"



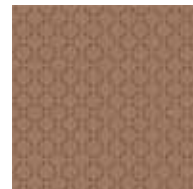
Vibration Red  
10x60cm / 4"x 24"  
10x30 / 4"x12"



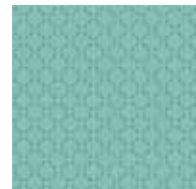
Vibration Orange  
10x60cm / 4"x 24"  
10x30 / 4"x12"



Vibration Yellow  
10x60cm / 4"x 24"  
10x30 / 4"x12"



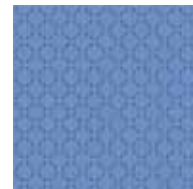
Vibration Brown  
10x60cm / 4"x 24"  
10x30 / 4"x12"



Vibration Mint  
10x60cm / 4"x 24"  
10x30 / 4"x12"



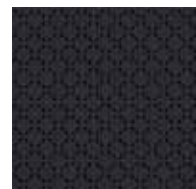
Vibration Purple  
10x60cm / 4"x 24"  
10x30 / 4"x12"



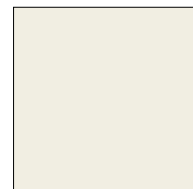
Vibration Blue  
10x60cm / 4"x 24"  
10x30 / 4"x12"



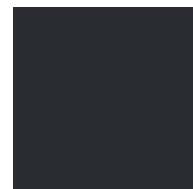
Vibration Dark Blue  
10x60cm / 4"x 24"  
10x30 / 4"x12"



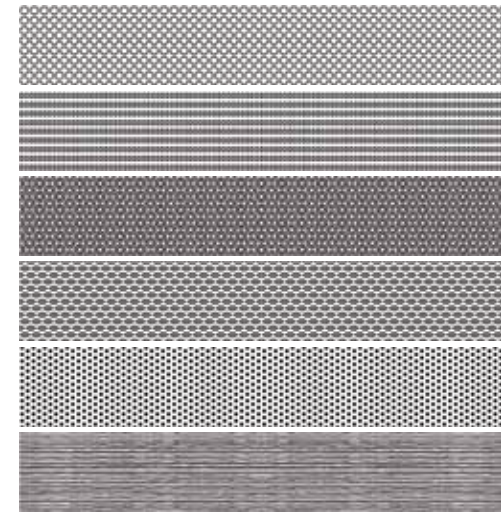
Vibration Black  
10x60cm / 4"x 24"  
10x30 / 4"x12"



Base tile White  
10x60cm / 4"x 24"

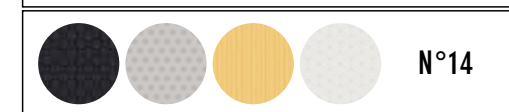
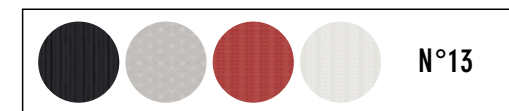
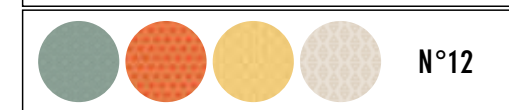
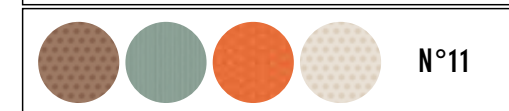
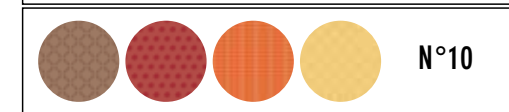
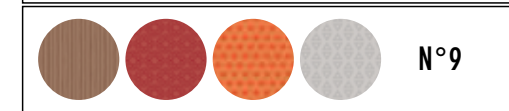
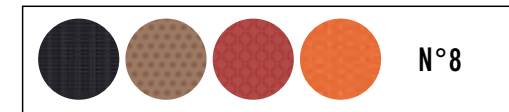
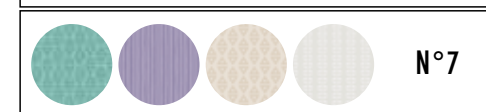
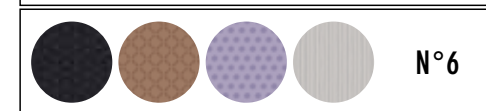
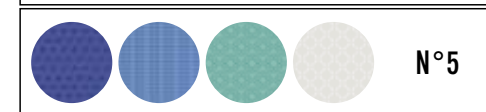
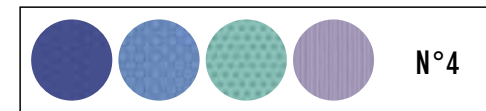
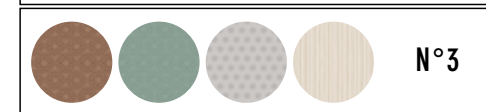
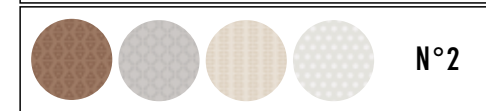
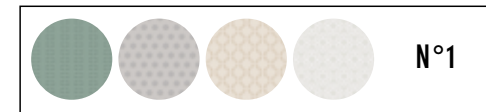


Base tile Black  
10x60cm / 4"x 24"



## Possibili combinazioni di colore

Colour combination proposal and possibilities



# vibration

## Caratteristiche tecniche\_Pesi e imballi

*Technical Features\_Weights and packing*

								
TECHNICAL FEATURES	RESISTANCE TO CHEMICALS	RESISTANCE TO STAINS	WATER ABSORPTION %	BENDING STRENGTH	SKID RESISTANCE	RESISTANCE TO ABRASION	FROST RESISTANCE	THERMAL SHOCK RESISTANCE
VIBRATION	GA GLA GHA ISO 10545.13	CLASSE 5 ISO 10545.14	≤0.5% ISO 10545.3	> 35N/mm <sup>2</sup> ISO 10545.4	R10 DCOF BOT 3000 ANSI A 137.1:2012>0,42	CLASSE 4 PEI ISO 10545-7	RESISTANT ISO 10545.12	RESISTANT ISO 10545.9

VIBRATION COLLECTION	PEZZI/PCS	MQ/SCATOLA SQM/BOX	KG NETTO NET KGS	SCATOLE BOXES	MQ/PALLET SQM/PALLET	KG NETTO NET KGS
VIBRATION 10x30 cm / 4"x12"	24	0,72	16,4	60	43,2	984
VIBRATION 10x60 cm / 4"x24"	12	0,72	16,3	60	43,2	978

Peso paletta legno / *Wooden pallet weight* 22kgs

# unica

TARGET GROUP

Via Del Crociale 69 | 41042 | Fiorano Modenese (MO) | Italy  
T +39 0536 405150 | F +39 0536 911027  
kontakt@unicaceramiche.com | www.unicaceramiche.com

  
Ceramics of Italy