

UNIVERSAL[®]

SECURITY INSTRUMENTS

Carbon Monoxide, Battery, Replaceable Instruction Manual



Model No.: USI/CO/REP/G2

Rev. A

Thank you for purchasing the carbon monoxide (CO) alarm. This device uses an advanced electrochemical sensor to detect CO concentration.

THIS EQUIPMENT SHOULD BE INSTALLED IN ACCORDANCE WITH THE NATIONAL FIRE PROTECTION (National Fire Protection Association, Batterymarch Park, Quincy, MA 02169-7471).

Typical installation drawing layouts for the device(s) indicating recommended locations and wiring methods which shall be in accordance with the applicable requirements outlined in the following: National Electrical Code.

The National Fire Protection Association (NFPA) and the manufacturer recommend replacing this alarm ten years from the date code on the back of the alarm, beyond which the device might no longer detect carbon monoxide accurately and should be immediately replaced. This instruction manual contains important information on starting operation and using the device.

ATTENTION! Please take a few minutes to thoroughly read the user manual before operating or servicing it, and familiarize yourself and your family with its operation, and save it for future reference.

Supplier's Declaration of Conformity:

47 CFR § 2.1077 Compliance Information
Responsible Party: Feit Electric Company, Inc.
 4901 Gregg Road, Pico Rivera, CA 90660, USA
 www.feit.com

Unique Identifier: USI/CO/REP/G2

Table of Contents

1. Carbon Monoxide Alarm: Steps To Take When The Alarm Sounds
2. Product Safety Information
3. Product Features and Specifications
4. Where to Install Carbon Monoxide Alarms
5. Installation Instructions
6. Battery Function
7. Alarm Operation And Testing
8. Troubleshooting
9. Carbon Monoxide (CO) Overview
10. Good Safety Habits: CO Safety Tips
11. How to Identify Nuisance Alarms
12. Maintenance Information
13. Warranty Information

1. Carbon Monoxide Alarm: Steps To Take When The Alarm Sounds

The carbon monoxide (CO) alarm pattern is four quick beeps, repeating every 5 seconds. The ALARM indicator (red) will flash the same pattern.

WARNING!

Carbon monoxide (CO) is a colorless, odorless, poisonous gas. You can't taste, see, or smell CO, but it can kill in just minutes.

This alarm will sound in a 4-beep pattern if life threatening levels of CO are detected. If the alarm sounds:

1. Immediately evacuate all occupants from the space and go outdoors to fresh air.
2. Call emergency responders (911 or fire department) for help; notify the building or vehicle owner, as necessary.

NOTE: See Section HOW TO IDENTIFY NUISANCE ALARMS, for nuisance alarm situations.

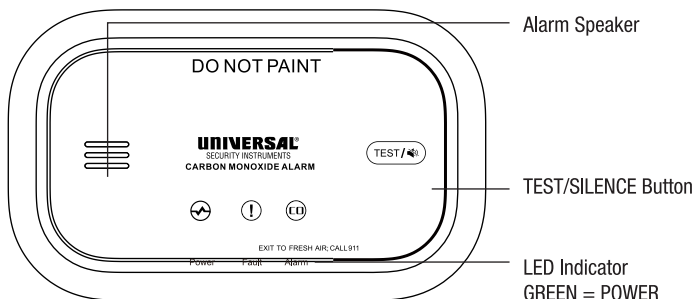
2. Product Safety Information

CAUTION! Please read carefully and thoroughly.

- Action of this device indicates the presence of dangerous levels of CO! CO can be fatal!
- This CO alarm was designed to detect carbon monoxide from any source of combustion in a residential environment. It is not designed for use in recreational vehicle (RV) or boat.
- This CO alarm was designed for indoor use only. Do not expose to rain or moisture.
- Do not drop or strike the detector. Do not open or tamper with the alarm as this could cause malfunction.
- Installation of the alarm should not be used as a substitute for proper installation, use and maintenance of fuel burning appliances including appropriate ventilation and exhaust systems.
- This CO alarm should be installed by a competent person.
- This CO alarm is not intended to alert hearing impaired individuals.
- Do NOT try to repair the CO alarm because there is the risk of electric shock or malfunction if the CO alarm is tampered with.
- Individuals with medical problems may consider using warning devices which provide audible and visual signals for carbon monoxide concentrations below 30 ppm. This CO alarm has not been investigated for carbon monoxide detection below 70 PPM.
- ATTENTION! THIS CO ALARM WILL ONLY INDICATE THE PRESENCE OF CARBON MONOXIDE GAS AT THE SENSOR. CARBON MONOXIDE GAS MIGHT BE PRESENT IN OTHER AREAS.
- THIS CO ALARM IS DESIGNED TO PROTECT AGAINST THE ACUTE EFFECTS OF CARBON MONOXIDE EXPOSURE. IT WILL NOT FULLY SAFEGUARD INDIVIDUALS WITH SPECIFIC MEDICAL CONDITIONS. IF IN DOUBT CONSULT A MEDICAL PRACTITIONER.
- THIS CO ALARM IS INTENDED FOR USE IN ORDINARY INDOOR RESIDENTIAL AREAS. IT IS NOT DESIGNED TO MEASURE COMPLIANCE WITH Occupational Safety and Health Administration (OSHA) COMMERCIAL AND INDUSTRIAL STANDARDS.
- THIS CO ALARM IS DESIGNED TO DETECT CARBON MONOXIDE GAS FROM ANY SOURCE OF COMBUSTION. IT IS NOT DESIGNED TO DETECT SMOKE, FIRE, OR ANY OTHER GASES.

- The replacement date that appears on the CO alarm is the date beyond which the CO alarm might no longer detect carbon monoxide accurately and should be immediately replaced.
1. The TEST/SILENCE button accurately tests the device's functions. Do not use any other test method. Test the device weekly to ensure proper operation. Do not install in non-residential buildings. The device is not a substitute for a complete alarm system.
 2. If you're sure it isn't a real alarm warning, open windows or fan the air around the device to silence it.
 3. Observe and follow all local and national electrical and building codes for installation.
 4. This device can only sound its alarm when it detects a dangerous level of CO in the air. They do not sense smoke, heat, flame, or other gases. It is designed to give an audible warning that CO is dangerous.
 5. This device has limitations. It is not foolproof and is not a substitute for insurance. House owners and renters should insure their lives and property. In addition, it is possible for the device to fail at any time. For this reason, you must test the device weekly and replace the unit every 10 years.

3. Product Features and Specifications



POWER Indicator: The POWER indicator (green LED) is used to indicate the power status of the device. The POWER indicator will flash once every 40 seconds.

FAULT Indicator: The FAULT indicator (yellow LED) is used to indicate the fault status of the device.

ALARM Indicator: The ALARM indicator (red LED) is used to indicate the alarm status of the CO alarm.

TEST/SILENCE Button: The TEST/SILENCE button is used to test the device. Press and hold to enable TEST function.

Alarm Speaker: The alarm sounder is used to send out CO alarm warnings and fault warning information.

Model: USI/CO/REP/G2

Product Standards: UL 2034 - CO alarms [UL 2034, 5th Ed]

Power Supply: 3V (2*AA alkaline battery)

Recommend Battery Type: Energizer E91, Gold Peak GN15A

Sensor Type: Electrochemical

Product Service Life: 10 years after manufacture

Sensitivity Setting: Conforms to UL 2034 standard.

30PPM: Without alarm in 30 days

70PPM: Alarm between 60 to 240 minutes

150PPM: Alarm between 10 to 50 minutes

400PPM: Alarm between 4 to 15 minutes

Operation Ambient Condition: 40°F (4.4°C) ~100°F (37.8°C), 25~95%RH non-condensing

Alarm Sound: ≥85dB (A) at 10 feet (3.05m)

Low Battery Warning Silence: About 10 hours

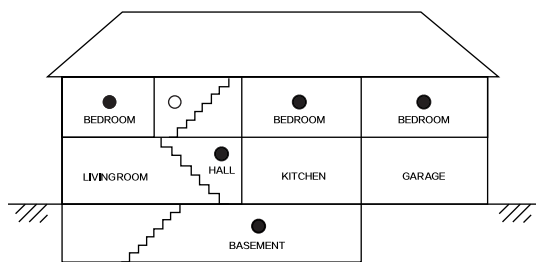
Installation Location: Wall

Detection Range: Max. 430 ft. (40 m²) within a room

Size: 4.72x2.87x1.33 inches (120x73x34 mm)

NOTE: This CO alarm is designed to detect carbon monoxide gas from ANY source of combustion. It is NOT designed to detect any other gas.

4. Where to Install Carbon Monoxide Alarms



○ REQUIRED TO MEET NFPA RECOMMENDATIONS

● SUGGESTED AREAS FOR INSTALLING ADDITIONAL CO ALARMS

The following suggestions are intended to help you with the placement and installation of your CO alarm.

1. Place it out of the reach of children. Children must not handle the CO alarm.
2. Install it in a bedroom or hallway located close to the sleeping area. Take special care to verify that the alarm can be heard in sleeping areas.
3. It is recommended that a CO alarm be installed on each level of a multilevel house.
4. Do not install within 5 feet of heating or cooking appliances. A distance of 15 feet is recommended to prevent nuisance alarms.
5. Placing it at eye level allows for optimum monitoring of the red and green indicator lights.
6. Ensure that all vents in the unit are unobstructed.
7. Do not install in dead air spaces, such as the peaks of vaulted ceilings or gabled roofs.
8. Do not install in turbulent air from ceiling fans.
9. Do not place it near fresh air vents or close to doors and windows that open to the outside.
10. Keep the CO alarm away from excessively dusty, dirty, or greasy areas. Dust, grease and household chemicals can affect the sensor.
11. Keep out of damp and humid areas, such as the bathroom. Avoid spraying aerosols near the CO alarm.
12. Do not install in areas where the temperature is below 40°F (4.4°C) or hotter than 100°F (37.8°C).
13. Do not place it behind curtains or furniture. CO must be able to reach the sensor for the unit to accurately detect CO.
14. Do not place them near metal objects.

WARNING! Alarm users should add the phone numbers of their emergency service providers and qualified technicians on the two self-adhesive labels provided by the source alarm manufacturer. Users should place one label next to the alarm and another near the fresh air they plan to gather. When the alarm indicates the presence of carbon monoxide, the user can escape as planned.

5. Installation Instructions

CAUTION! This device should be installed by a competent person.

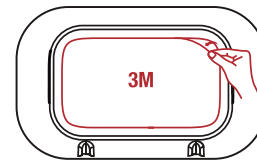
WARNING! This device should be located in an open and unobstructed area and shall not be located behind furniture, drapes, or any other object where it might not be seen or heard.

When choosing your installation locations, make sure you can hear the alarm from all sleeping areas. If you install only one device in your house, install it near bedrooms, not in the basement or furnace room.

The device can be installed two options

Option one: Installation Steps (3M Tape):

1. Insert the batteries into the battery compartment.
2. Attach the bracket to the alarm.
3. Apply 3M tape to the back of the bracket.
4. Securely place the alarm in the desired position.
5. Press and hold the TEST/SILENCE button to test the device. Ensure the alarm sounds in the correct pattern.

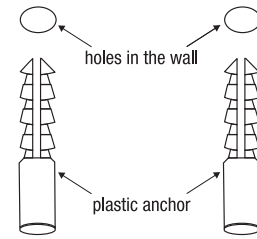


Note: This installation method is not certified by ETL test.

WARNING! DO NOT install the device in direct sunlight or a high-temperature environment.

Option two: Installation Steps

1. Hold the bracket against the wall at the desired location and use a pencil to mark the positions for the screw holes.
2. Drill holes at the marked points and insert the provided plastic anchors.
3. Align the bracket with the anchors and secure it by tightening the provided screws, being careful not to over-tighten.
4. Insert the batteries into the battery compartment.
5. Mount the alarm onto the bracket.
6. Press and hold the TEST/SILENCE button to test the device. Ensure the alarm sounds according to the correct pattern.



CAUTION! As you install the device, it may sound for several minutes, then stop and enter normal operation mode. If it always sounds like this, please call our agent.

6. Battery Installation and Replacement

Battery Information

This alarm is powered by 3V DC (2pcs 1.5V AA batteries). Under normal conditions, a fresh battery should last at least one year. These batteries can be purchased at your local retailer.

NOTE: Battery installation or replacement is essential for the proper functioning of the closing and result in improper alarm operation

Battery Replacement

This alarm is equipped with a low battery monitoring circuit. When the battery capacity is low and unable to provide sufficient power for all alarm functions, a low battery condition will be indicated. See the Troubleshooting Guide.

The battery must be replaced immediately upon the first occurrence of the "Low Battery Warning" to ensure continuous alarm protection. To install or replace the battery in the CO alarm, please perform the following steps:

1. Remove the device from the bracket.
2. Take out the old batteries and replace it with a new set.
3. Insert the new batteries into the battery compartment.
4. Reattach the alarm to the bracket.
5. Press and hold the TEST/SILENCE button to test the alarm. If the test alarm sounds correctly, the device is functioning normally.

WARNING! CONSTANT EXPOSURE TO HIGH OR LOW TEMPERATURES OR HIGH HUMIDITY MAY REDUCE BATTERY LIFE. Use only the battery specified. Please replace two recommended batteries in the meantime. The use of a different battery may have a detrimental effect on the device.

CAUTION! A good safety measure is to replace the battery at least once a year. Test the alarm for correct operation using the TEST/SILENCE button whenever the battery has been replaced!

Battery Disposal

WARNING! Fire, explosion, and severe burn hazards. Do not recharge, crush, disassemble, or heat above 100°C, incinerate or expose contents to water.

1. Do not dispose of the battery or the device with regular household waste.
2. Dispose of the battery and device in accordance with all applicable federal, state, and local regulations.

7. Alarm Operation and Testing

Start Up

When the device is first powered on, the ALARM indicator (red), FAULT indicator (yellow), and POWER indicator (green) will each flash once in sequence. The buzzer will sound once, the POWER indicator (green) will flash once per second, indicating that the device is in the preheating state. Following this 60-second period, the POWER indicator (green) will begin flashing every 40 seconds, signaling that the unit is functioning properly.

Normal Operation

The POWER indicator (green) flashes once every 40 seconds.

CO Alarm Warning

When the device detects a dangerous level of CO, it will emit a loud alarm pattern. The alarm signal pattern is 4 short beeps followed by 5 seconds of silence. This cycle repeats as long as a dangerous CO condition exists. The ALARM indicator (red) will flash the same pattern.

This signal will repeat until the dissipation of CO.

Alarm Sensitivity Setting: Conforms to UL 2034

30 PPM: Without alarm in 30 days

70 PPM: Alarm between 60 to 240 minutes

150 PPM: Alarm between 10 to 50 minutes

400 PPM: Alarm between 4 to 15 minutes

NOTE: Refer to "Carbon Monoxide Alarm: Steps To Take When The Alarm Sounds" when you hear the sounds of the CO alarm warning.

CO Alarm Warning Silence

During the device's CO alarm mode, pressing the TEST/SILENCE button will pause the alarm sound of the device about 5 minutes. The alarm indicator (red) will continue flashing as it does in CO alarm mode, it indicates the device is running into the CO alarm silence mode.

NOTE: The audible alarm signal will reactivate about 5 minutes from the time TEST/SILENCE button is operated if the concentration of CO surrounding the alarm remains at 50 PPM or greater.

WARNING! Before enabling the feature of CO alarm warning silence, you should confirm that the alarm is due to dangerous levels of carbon monoxide, and the dwelling should be ventilated.

⚠ WARNING! Never remove the batteries from your CO alarm to silence the horn. Use the silence feature. Removing the batteries removes your protection! See “Carbon Monoxide Alarm: Steps To Take When The Alarm Sounds” for details on responding to an alarm.

Low battery warning

If the device chirps once every 40 seconds, the fault indicator (yellow) will flash at the same time.

NOTE: When the low battery warning is activated, the CO alarm will still be able to produce a CO alarm signal for at least 12 hours, and it will continue to provide a low battery warning signal for up to 7 days.

NOTE: You need to replace the battery as soon as possible when the device enters this status.

NOTE: The low battery warning cannot be silenced when the battery voltage is critically low.

This device requires a continuous supply of electrical power from a healthy battery.

Low battery warning silence

When the device is under the low battery warning, pressing the TEST/SILENCE button, it will enter the low battery warning silence status for about 10 hours, and FAULT indicator (yellow) will continue flashing.

NOTE: The silence feature of low battery warning is temporary action to cancel warning sound effect, you need replace the battery as soon as possible.

Fault Warning

If the device chirps twice every 40 seconds, the FAULT indicator (yellow) will flash. It indicates the device is in malfunction condition. This means your CO alarm no longer has a detection function.

NOTE: When Fault warning occurs, replace the device immediately. Please contact customer service for assistance.

Fault Warning Silence

When the device is in a fault state, press the TEST/SILENCE button, it will enter the fault warning mute state for about 10 hours, and the fault indicator (yellow) remains flashing.

NOTE: The silence feature of the fault warning is a temporary action to cancel the warning sound effect, you need to replace the device as soon as possible.

End-of-Life Warning

If the device chirps three times every 40 seconds, the failure indicator (yellow) flashes three times. It indicates the end of the life of the CO alarm. You need to immediately replace the device.

End-of-Life Reset

When the device enters the end-of-life warning state in the first 30 days, press the button to reset the end-of-life. At this point, if the device is still available, it will enter the normal standby state for 24 hours, after 24 hours, the device will return to the end-of-life warning state. After 30 days of the first end-of-life warning state, the device can no longer be reset and needs to be replaced in a timely manner.

NOTE: The replacement date that appears on the CO alarm is the date beyond which the CO alarm might no longer detect carbon monoxide accurately and should be immediately replaced.

Test The Device

When the device is in normal operation, you can test it by pressing the TEST/SILENCE button. When you press and hold the button, the alarm will sound at a lower-than-normal volume, and the ALARM indicator (red) will flash. After the eighth sound, the alarm will sound at its normal volume (>85 dB). The test will stop when you release the button, but the alarm will continue for at least two cycles.

NOTE: After the TEST/SILENCE button is enabled, the alarm sounds and the red alarm light flashes. This does not indicate that CO is present.

NOTE: If the device is in a failure or end-of-life state, it cannot be tested.

NOTE: Test the device every week! If, at any time, your device does not perform as described, replace it immediately.

Weekly Test

It is recommended to test the alarm weekly by pressing the TEST/SILENCE button to ensure the normal operation of the equipment.

Alarm Memory

7-day Alarm Memory Function

After the unit has exited the alarm indicator (red) flashes once every 40 seconds. After pressing the TEST/SILENCE button, the device will clear the alarm memory warning and respond to the corresponding function of the button. Press and hold the button to enter test alarm state or 7 days later, the device will automatically clear the alarm memory prompt.

8. Troubleshooting

Problem	Method of Disposal
The CO alarm does not sound when the TEST/SILENCE button is pressed.	<ol style="list-style-type: none">1. Ensure the CO alarm is powered off. Replace the battery and confirm that the CO alarm functions normally after the replacement.2. The CO alarm is in 'Fault warning' mode. Please ensure the CO alarm is in 'Normal operation' mode before testing it.3. Clean the CO alarm. Please refer to section 12, 'Maintenance Information'.4. If the CO alarm still malfunctions during the warranty period, you can return it to your retailer.5. If the CO alarm is out of warranty, please replace it with a new one.
The CO alarm chirps once with FAULT indicator (yellow) flashing once every 40 seconds.	Low Battery Voltage Signal The battery is low; please replace it.
The CO alarm chirps twice with FAULT indicator (yellow) flashing twice every 40 seconds.	Malfunction Signa Clean the CO alarm. Please refer to section '12. Maintenance Information'. <ol style="list-style-type: none">1. If the CO alarm is still under warranty, return it to your retailer for replacement.2. If the CO alarm is out of warranty, replace it with a new CO alarm.

Problem	Method of Disposal
The CO alarm chirps three times with FAULT indicator (yellow) flashes three times every 40 seconds.	End-of-Life Signal Replace the alarm.
The CO alarm sounds unwanted alarms when residents are cooking, taking showers, etc.	During normal activities like cooking or showering, the alarm may sound due to increased humidity or other household fumes. To reduce unwanted CO alarms open a window or increase ventilation in the area.

9. Carbon Monoxide (CO) Overview

Carbon monoxide (CO) is a colorless, odorless, and tasteless poisonous gas that can be fatal when inhaled. CO inhibits the blood's ability to carry oxygen.

Possible Sources of CO

Inside your home, appliances used for heating and cooking are the most likely sources of CO. Vehicles and other combustion engines running in an attached garage and using a charcoal/gas grill or hibachi in an enclosed area are all possible sources of CO. Generators running in enclosed areas, such as garages or living spaces, will create CO. It can be produced when burning any fossil fuel: gasoline, diesel, propane, natural gas, oil and wood. It can be produced by any fuel-burning appliance that is malfunctioning, improperly installed, or not ventilated correctly, such as: Furnaces/boilers, gas ranges, stoves, gas clothes dryers, water heaters, portable fuel burning space heaters, fireplaces, wood-burning stoves and certain swimming pool heaters. Blocked chimneys or flues, back drafting and changes in air pressure, corroded or disconnected vent pipes, or a loose or cracked furnace heat exchanger can also release CO into your building.

The Following Conditions Can Result In Transient CO Situations

1. Excessive spillage or reverse venting of fuel-burning appliances may be caused by:
 - i. Outdoor ambient conditions such as wind direction and/or velocity, including high gusts of wind; heavy air in the vent pipes (cold/humid air with extended periods between cycles).
 - ii. Negative pressure differential resulting from the use of exhaust fans.
 - iii. Simultaneous operation of several fuel-burning appliances competing for limited internal air.
 - iv. Vent pipe connection vibrating loose from clothes dryers, furnaces, or water heaters.
 - v. Obstructions in or unconventional vent pipe designs which amplify the above situations.
 - vi. Poorly designed or maintained chimneys and/or vents.
2. Extended operation of unvented fuel-burning devices (such as ranges, ovens, or fireplaces).
3. Temperature inversions that can trap exhaust gases near the ground.
4. Car idling in an open or closed attached garage, or near a home.

Symptoms of CO Poisoning

Initial carbon monoxide poisoning symptoms are similar to the flu with no fever and can include dizziness, severe headaches, nausea, vomiting and disorientation. Everyone is susceptible but experts agree that unborn babies, pregnant women, senior citizens and people with heart or respiratory problems are especially vulnerable. If symptoms of carbon monoxide poisoning are experienced seek medical attention immediately. CO poisoning can be determined by a carboxyhemoglobin test.

The following symptoms are related to CARBON MONOXIDE POISONING and should be discussed with all members of the household:

1. **MILD EXPOSURE:** Slight headache, nausea, vomiting, and fatigue (often described as 'flu-like' symptoms).
2. **MEDIUM EXPOSURE:** Severe throbbing headache, drowsiness, confusion, fast heart rate.
3. **EXTREME EXPOSURE:** unconsciousness, convulsions, cardiorespiratory failure, and death.
4. The above levels of exposure relate to healthy adults. Levels differ for those at high risk. Many cases of reported carbon monoxide poisoning indicate that while victims are aware, they are not feeling well, they become so disoriented they are unable to save themselves by either exiting the building, or calling for assistance. Also, young children and household pets may be the first affected.

⚠ WARNING! Exposure to high levels of carbon monoxide can be fatal or cause permanent damage and disabilities. The device may not prevent the chronic effects of carbon monoxide exposure, and the device will not fully safeguard individuals at special risk.

10. Good Safety Habits: CO Safety Tips

Each year, have a qualified technician inspect and clean your heating system, vents, chimney, and flue to ensure proper function and safety. Always install appliances according to manufacturer's instructions and adhere to local building codes. Most appliances should be installed by professionals and inspected after installation.

Regularly examine vents and chimneys for improper connections, visible rust, or stains, and check for cracks in furnace heat exchangers. Verify that the color of flame is blue on pilot lights and burners. An amber or orange flame is a sign that the fuel is not burning completely and may be releasing CO. Teach all household members what the alarm sounds like and how to respond. Fire Departments, most utility companies and HVAC contractors will perform CO inspections. Some contractors may charge for this service. It's advisable to inquire about any applicable fees prior to having the service performed. Feit Electric will not pay for, or reimburse the owner or user of this product, for any repair or dispatch calls related to the alarm sounding.

11. How to Identify Nuisance Alarms

Carbon Monoxide (CO) Nuisance

RESET: Pressing the TEST/SILENCE button during CO alarm allows the CO alarm to reset calculations and double check for the presence of CO. If the CO alarm re-alarms within 6 minutes, it is sensing high levels of CO which can quickly become a dangerous situation. Exit to fresh air and call 911.

⚠ WARNING! It is impossible to determine the source of a CO alarm using sight or smell. Always consider a CO alarm event as dangerous.

12. Maintenance Information

To keep your CO alarm in good working order, please follow these simple steps:

1. Verify the device's alarm sound and indicator operation by pressing the TEST/SILENCE button once a week.
2. Remove the device from the wall and clean the alarm cover and vents with a soft brush attachment once a month to remove dust and dirt.
3. Never use detergents or other solvents to clean the device.

4. Avoid spraying air fresheners, hair spray, or other aerosols near the device.
5. Do not paint the device. Paint will seal the vents and interfere with the sensor's ability to detect CO. Never attempt to disassemble the unit or clean inside. This action will void your warranty.
6. As soon as possible, place the device back in its proper location to assure continuous protection from carbon monoxide poisoning.
7. When household cleaning supplies or similar contaminants are used, the area should be ventilated.

⚠ WARNING! The following substances can affect the sensor and may cause false actions: methane, propane, isobutane, isopropanol, ethylene, benzene, toluene,ethyl acetate, and hydrogen sulfide, sulfur dioxide, alcohol-based products, paints, thinners, solvents, adhesives, and hair sprays, aftershave, perfumes, and some cleaning agents.

⚠ WARNING! Your device will not be operational and will not monitor for CO levels without a battery. This apparatus is designed to protect individuals from the acute effects of carbon monoxide exposure. It may not prevent the chronic effects of carbon monoxide exposure and will not fully safeguard individuals at special risk or with specific medical conditions. If in doubt, consult a medical practitioner.

13. Warranty Information

TEN-YEAR LIMITED WARRANTY

This product is warranted to be free from defects in material and workmanship for a period of 10 (ten) years from the date of purchase. For products containing a sealed battery, this warranty does not cover any damage that may be caused by the battery. Warranty does not apply to replaceable battery. This warranty applies only to the original consumer purchaser and only to products used in normal residential use and service. If this product is found to be defective, the only obligation, and your exclusive remedy is the repair or replacement of the product, at the company's discretion, provided that the product has not been damaged through misuse, abuse, accident, modification, alteration, neglect, or mishandling. This Warranty shall not apply to any product which is found to have been improperly installed, setup, or used in any way not in accordance with the instructions supplied with this product.

ALARM RETURNS

For replacement of this alarm under the terms of this Warranty, please contact customer service at [feit.com/help](https://www.feit.com/help) for assistance. The company does not warrant, and specifically disclaims any warranty, whether express or implied, of fitness for a particular purpose, other than the warranty contained herein. No implied warranty on this product, created by state law, shall extend beyond the term of this warranty unless such law otherwise provides. The company specifically disclaims any liability and shall not be liable for any consequential or incidental loss or damage, including, but not limited to, damages to any equipment with which this product is used. Some states do not allow the exclusion or limitation of incidental or consequential damages, so the above limitations or exclusions may not apply to you. No agent, representative, dealer, or employee of the company has the authority to increase or alter the obligations or terms of this Warranty. This Warranty gives you specific legal rights and you may also have other rights which vary from state to state. This Warranty is only valid for merchandise purchased from outlets in the United States. This warranty expires upon product end-of-service life signal.