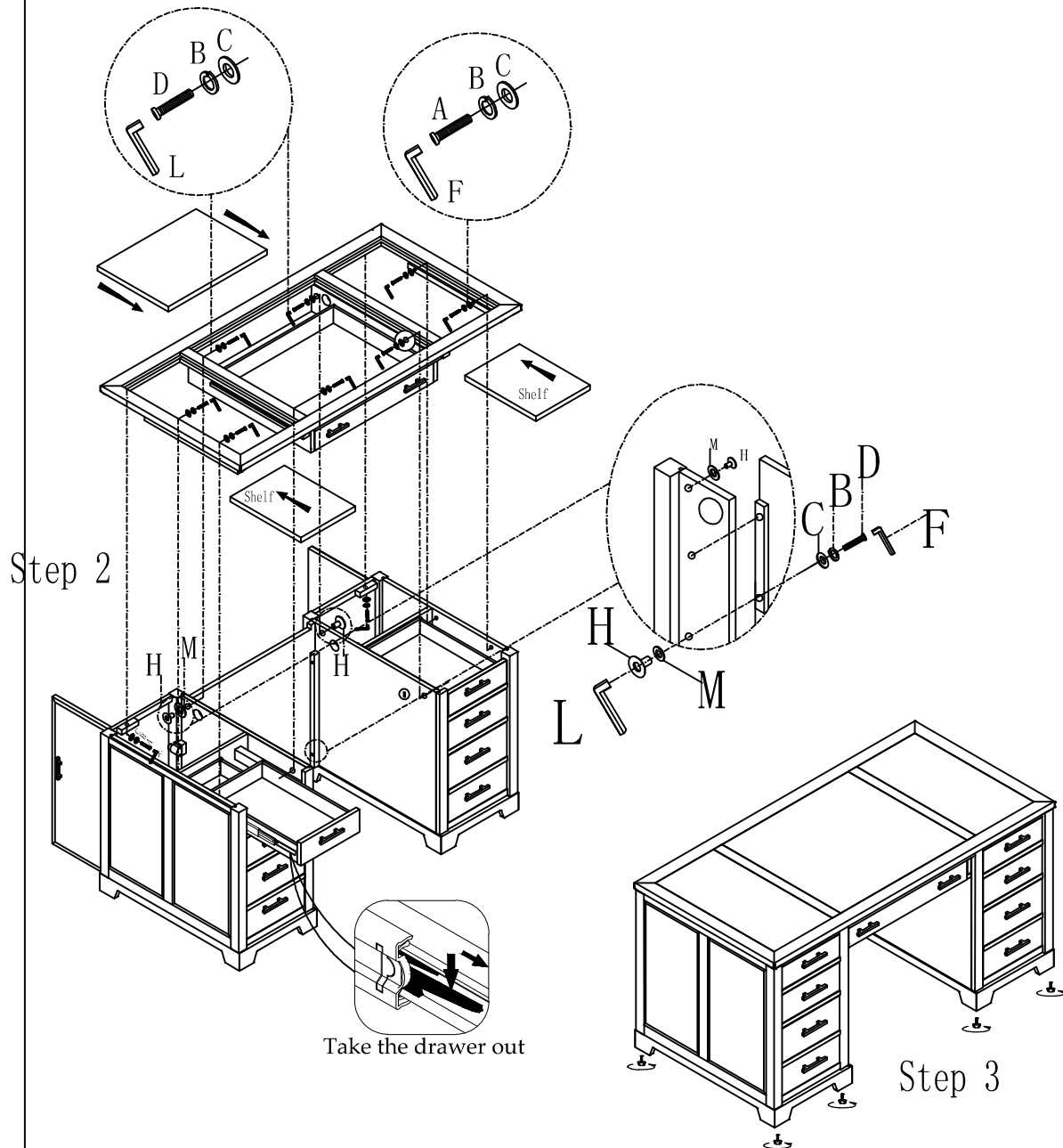


HEKMAN

A HOWARD MILLER COMPANY

ASSEMBLY INSTRUCTIONS

79180-Executive Desk



Step 1: Remove the upper drawer in both pedestals

Step 2: Assemble the left and right bases and the center panel with Bolt (A), Lock Washer (B) and Washer (C) using wrench (F).

Step 3: Place the top assembly on the bases with Bolt A, Lock Washer (B) and Washer (C) using wrench (F)

Step 4: Close the drawers after assembling.

MADE IN VIETNAM