

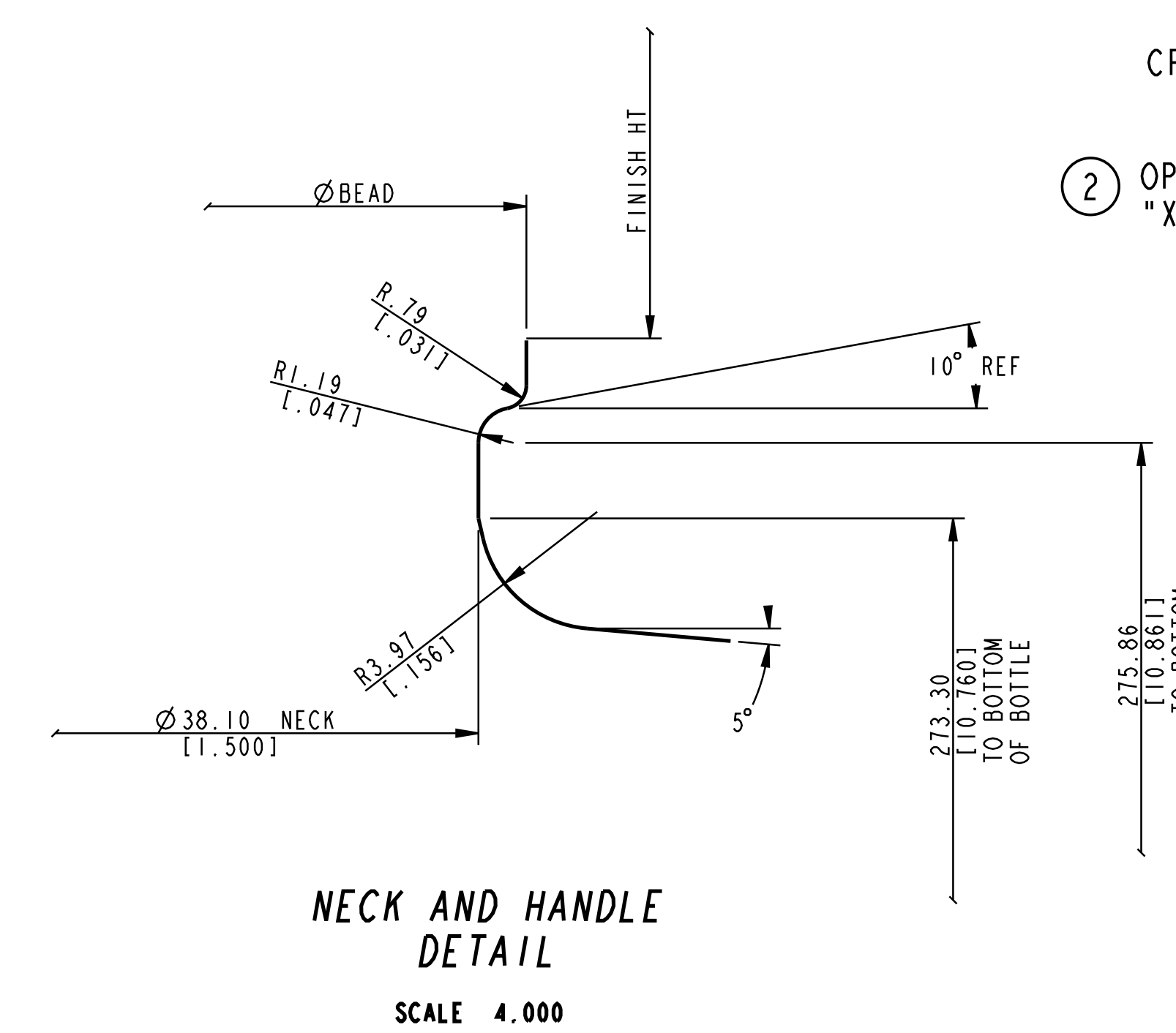
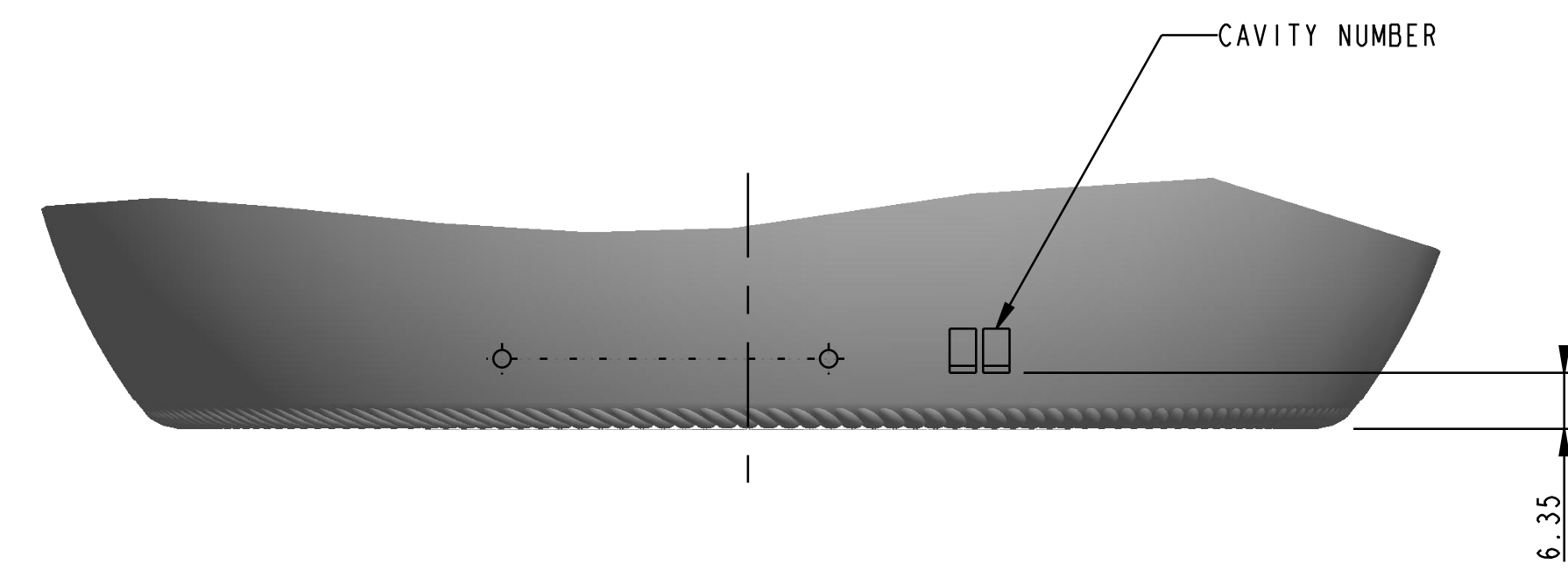
SHOULDER CAPACITY LETTERING TO APPEAR ON BOTH SIDES AS SHOWN, AND TO BE 9.53 [0.375] TALL.
 C.I.D. DOT CODE AND CAVITY NUMBER TO APPEAR ON HEEL. CAVITY NUMBER TO BE 6.00 [0.236] TALL.
 HEEL LETTERING TO APPEAR ON SIDE OPPOSITE C.I.D. DOT CODE, AND TO BE 5.00 [0.197] TALL.

OPTIONAL:
 BOTTOM PLATE: CAVITY NUMBER TO BE 8.00 [0.314] TALL

① OPTIONAL: CID RINGS TO APPEAR ON BOTTOM

CRESCENT KNURLING TO APPEAR ON BEARING SURFACE.

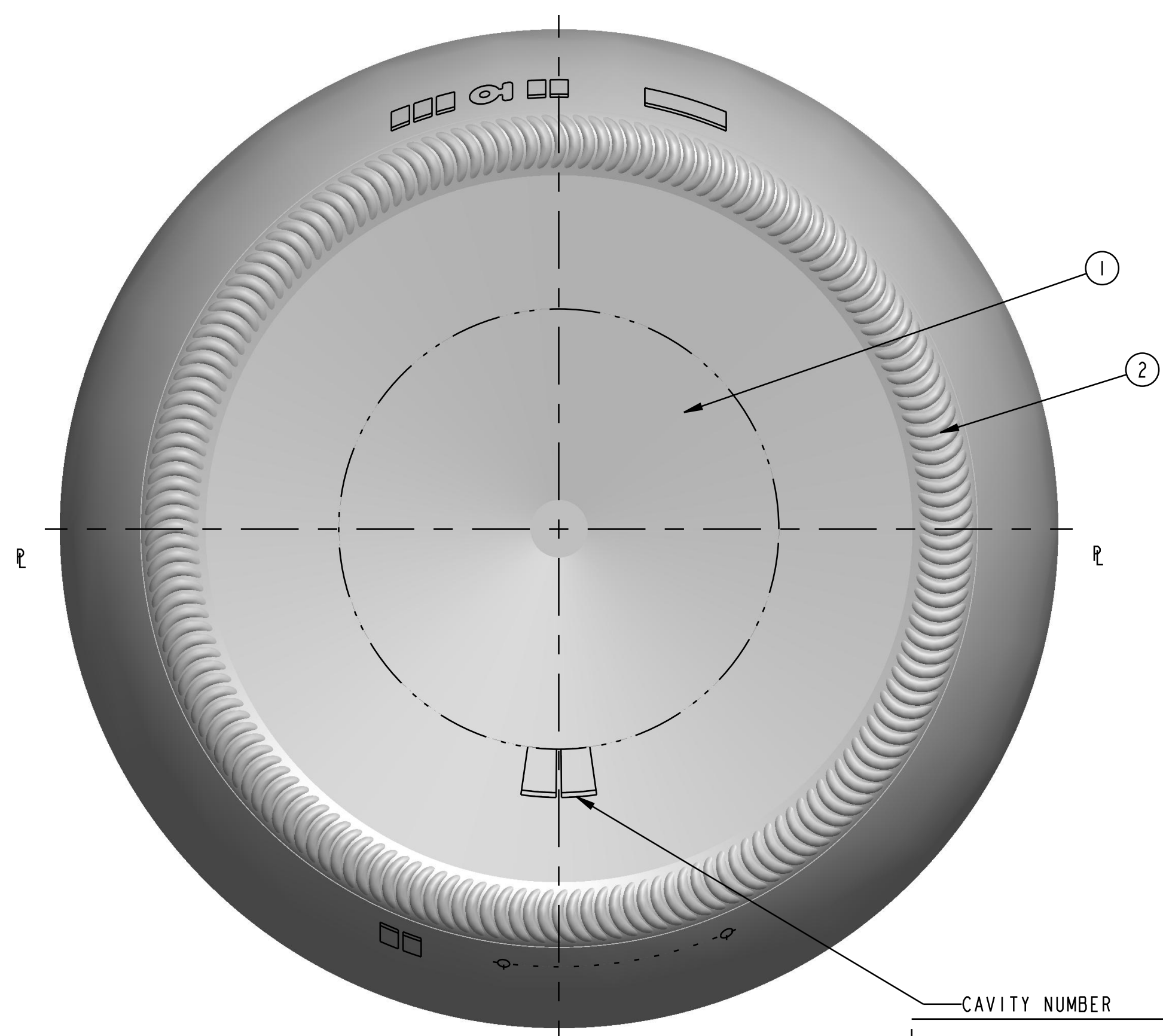
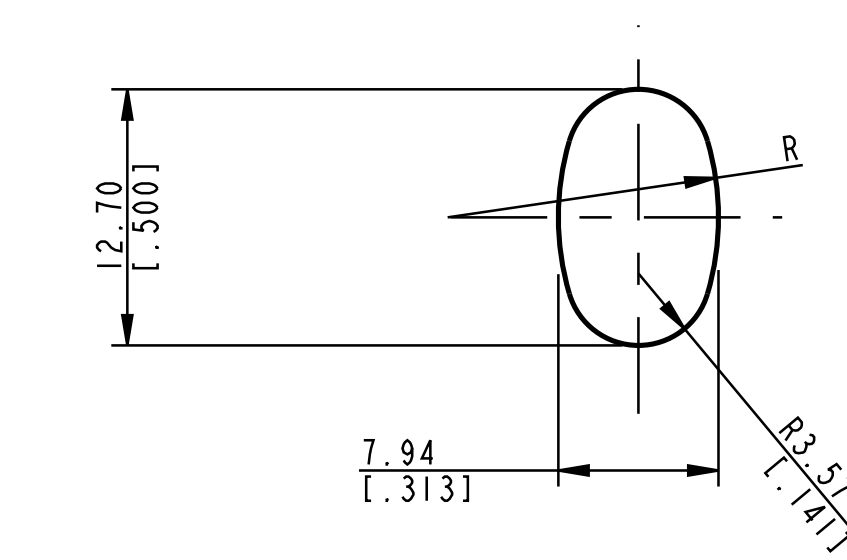
② OPTIONAL:
 "X" DESIGNS TO APPEAR ON BEARING SURFACE.



CONTAINER IS NOT INTENDED FOR USE WITH HAZARDOUS MATERIAL SHIPMENT PACKAGES THAT REQUIRE HYDROSTATIC PRESSURE TESTING, I.E. CFR 49 173.27.

THIS ITEM IS C-8172 MOULD EQUIPMENT, AND IS FOR D&C END USE.

SEE C-8172 FOR FOOD END USE.



CONTAINER OVERFLOW CAPACITY (BRIMFUL)		
3933.28 ml ± 29.57 ml [133.000 FL OZ ± 1.000 FL OZ]		
CONTAINER RATED CAPACITY (FILLPOINT)		
0.00 ml [0.000 FL OZ]		
CONTAINER WEIGHT		
1190.68 g ± 49.61 g [42.000 OZ ± 1.750 OZ]		
FINISH DESIGNATION 038-0405-R561		MAX GAS VOLUME 0.0 Gas Vol
PROCESS B&B	RETURNABLE NO	DESIGN REF.

DISCLAIMER

This specification does not relieve the customer of their ultimate responsibility for the determination of the appropriate container. It is the customer's responsibility to select the appropriate packaging based upon all information at their disposal including the specific application, regulatory compliance, product compatibility and shipping requirements. WE HEREBY DISCLAIM AND EXCLUDE ANY EXPRESS OR IMPLIED WARRANTIES, INCLUDING WITHOUT LIMITATION THE IMPLIED WARRANTIES OF MERCHANTABILITY AND FITNESS FOR A PARTICULAR PURPOSE.

DISTRIBUTED BY:



REF NO.:

DWG30641

DESCRIPTION:

128 oz Glass Jug, 38-400