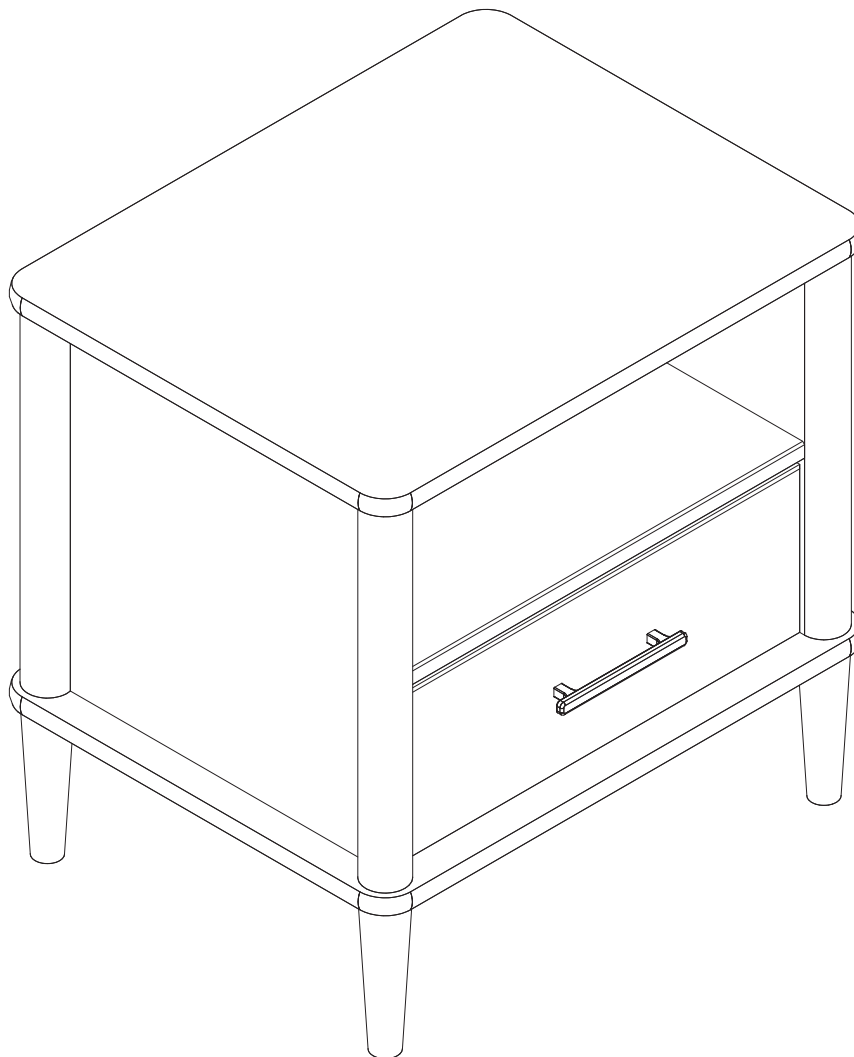


Item: SPNB4C

Assembly Instructions

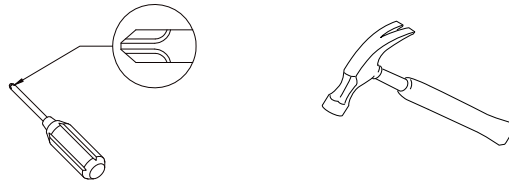


Please visit our website for the most current instructions, assembly tips, to report damage or request parts. www.walkerediton.com

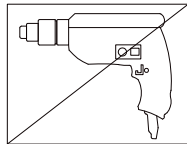
Revised 03/2023 V1

General Assembly Guidelines

- I. Ensure that all parts and hardware are available before beginning assembly.
- II. Follow each step carefully to ensure the proper assembly of this product.
- III. Two people are recommended for ease in the assembly of this product.
- IV. The three main types of hardware used to assemble this product are wood dowels, screws and bolts.
- V. A Phillips head screwdriver and hammer is required for the assembly of this product.



- VI. Power tools should not be used to assemble this product.

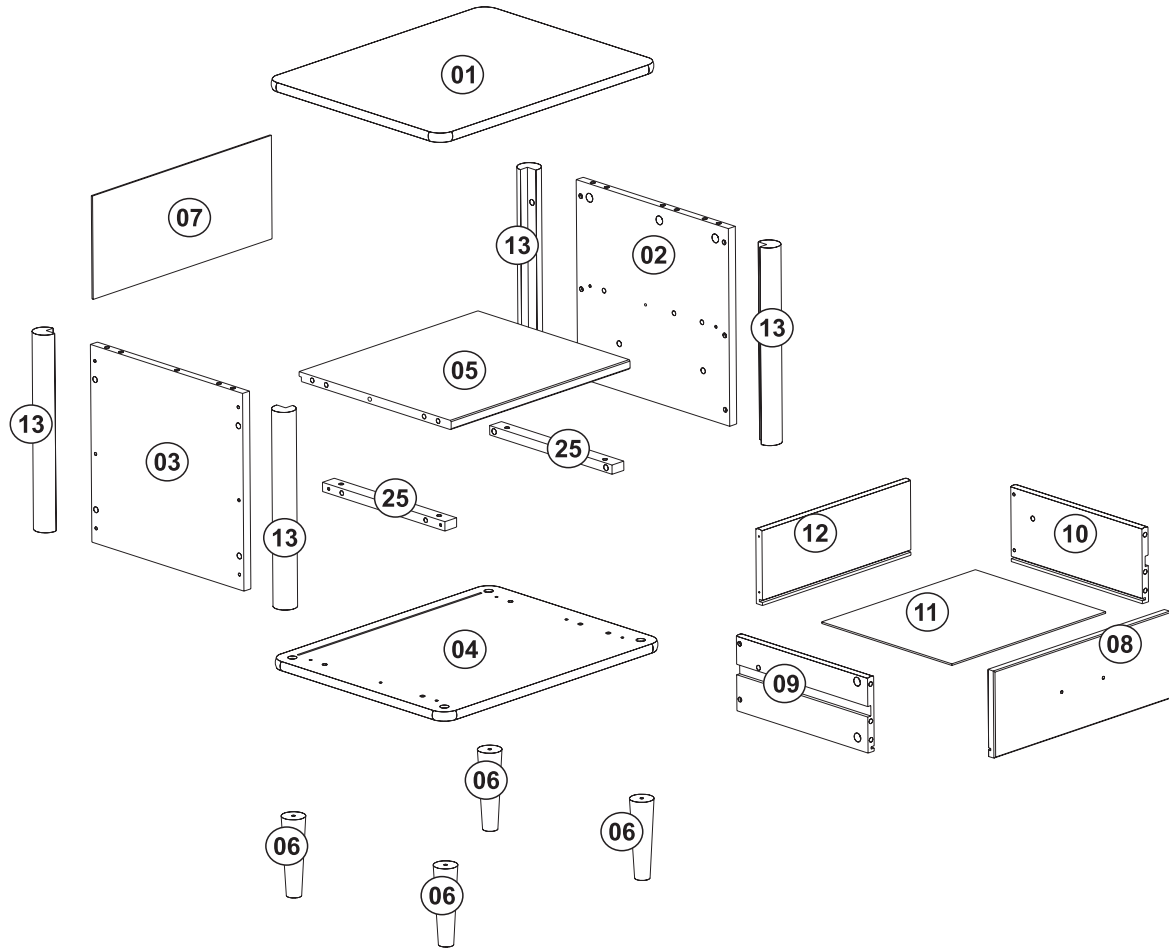


VII. Maintenance Guide

To maintain long term performance and easy gliding of your solid wood drawers, we recommend applying wax to the wooden guide rails.

1. Bee's wax is recommended or Paraffin wax from a standard candle can be used.
2. Apply the wax by rubbing it on the wooden guide rails where there is wood-on-wood contact when opening and closing the drawer. (Wax should be room temperature, do not melt the wax onto the wood)
3. Wax should be applied every few months for the first year and then only when needed after that to keep the drawers sliding smoothly.

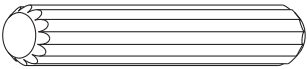
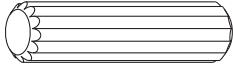
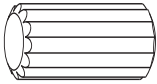
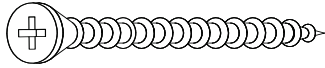



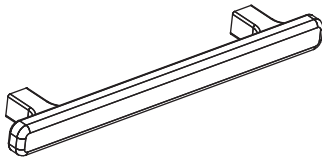
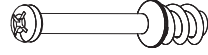
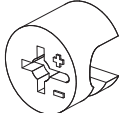
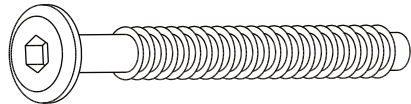

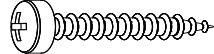
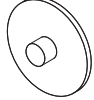
Parts List

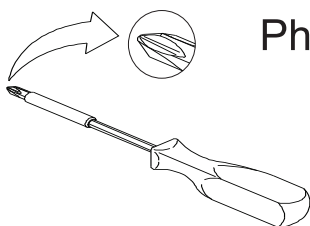


Part #	Description	Qty
01	Top panel	01 pcs
02	Right side panel	01 pcs
03	Left side panel	01 pcs
04	Bottom panel	01 pcs
05	Shelf	01 pcs
06	Foot	04 pcs
07	Back panel	01 pcs

Part #	Description	Qty
08	Drawer front	01 pcs
09	Left drawer side	01 pcs
10	Right drawer side	01 pcs
11	Drawer bottom	01 pcs
12	Drawer back	01 pcs
13	Side rail	04 pcs
25	Drawer slide	02 pcs

Hardware List

A		ø8*40mm	Wooden dowel	02 pcs
B		ø8*30mm	Wooden dowel	19 pcs
C		ø10*20mm	Wooden dowel	12 pcs
D		ø4,0*40mm	Screw	06 pcs
E		ø3,5*30mm	Screw	16 pcs
F		Ø3/16x7/8	Screw	02 pcs
G		ø8*8mm	Nail	06 pcs
H			Handle	01 pc
I		ø5,0*24mm	Cam Bolt	16 pcs
J		ø15*12mm	Cam Lock	16 pcs
K		ø7,0*50mm	Screw	04 pcs
L			Hex key	01 pc
M		ø4,0*25mm	Screw	06 pc
N		ø17mm	Cam Lock Cover	06 pc



Philips head screwdriver required for assembly
(not included)

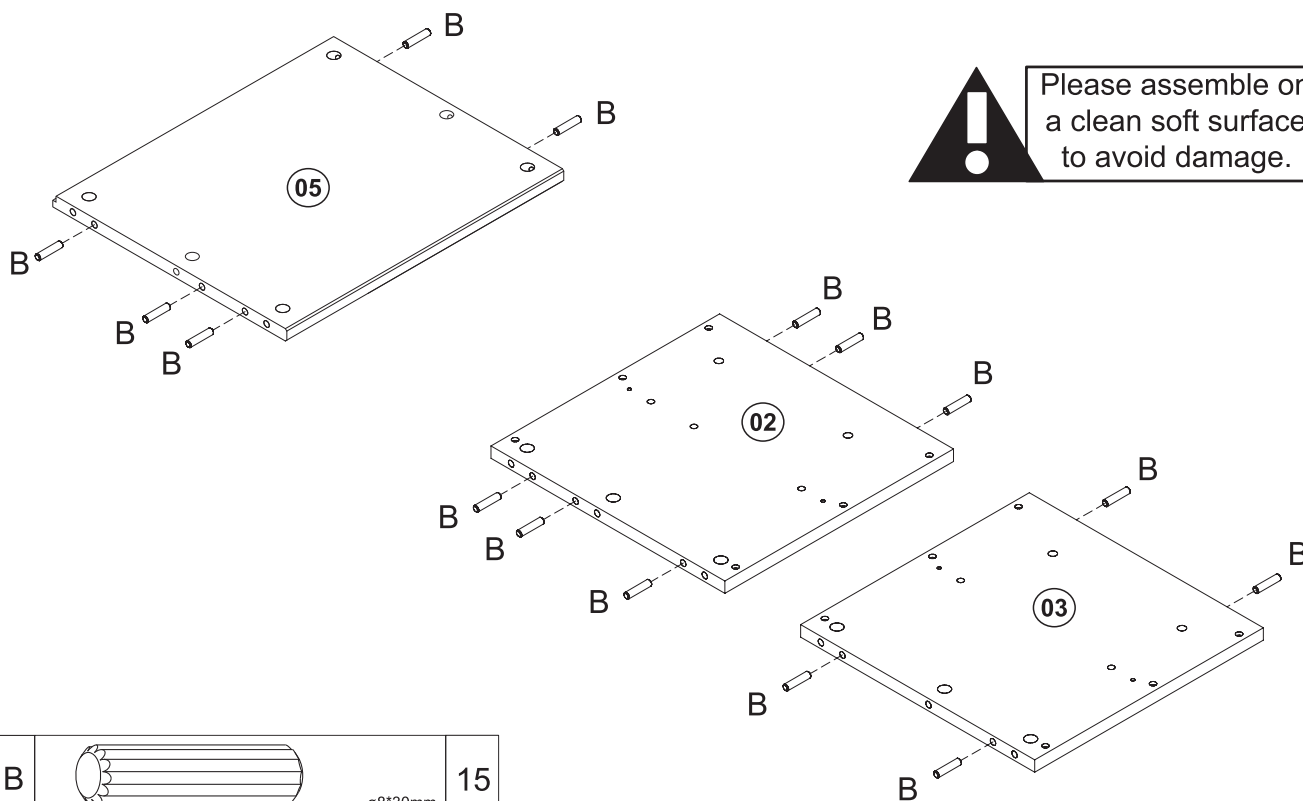
*The hardware quantities listed above are required for proper assembly.
Some extra hardware may also have been included.*

Step 1

Insert wooden dowel (B) into parts 02, 03, 05.

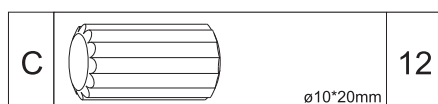
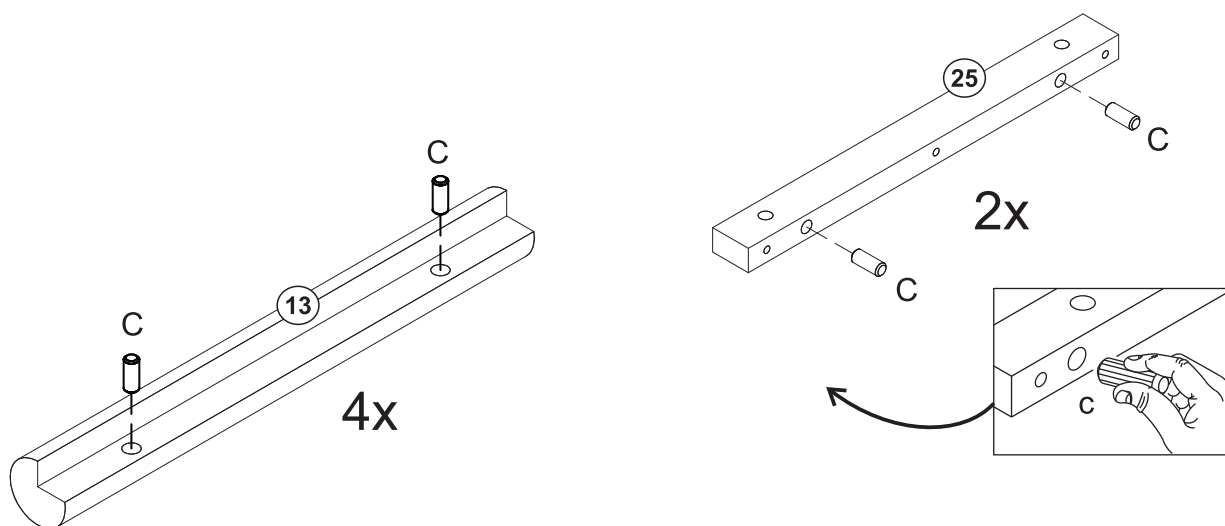


Please assemble on a clean soft surface to avoid damage.

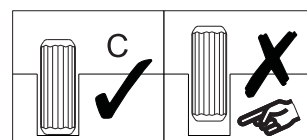


Step 2

Insert wood dowel (C) into parts 13 and 25.



Attention to the
dowel size:
ø10*20mm

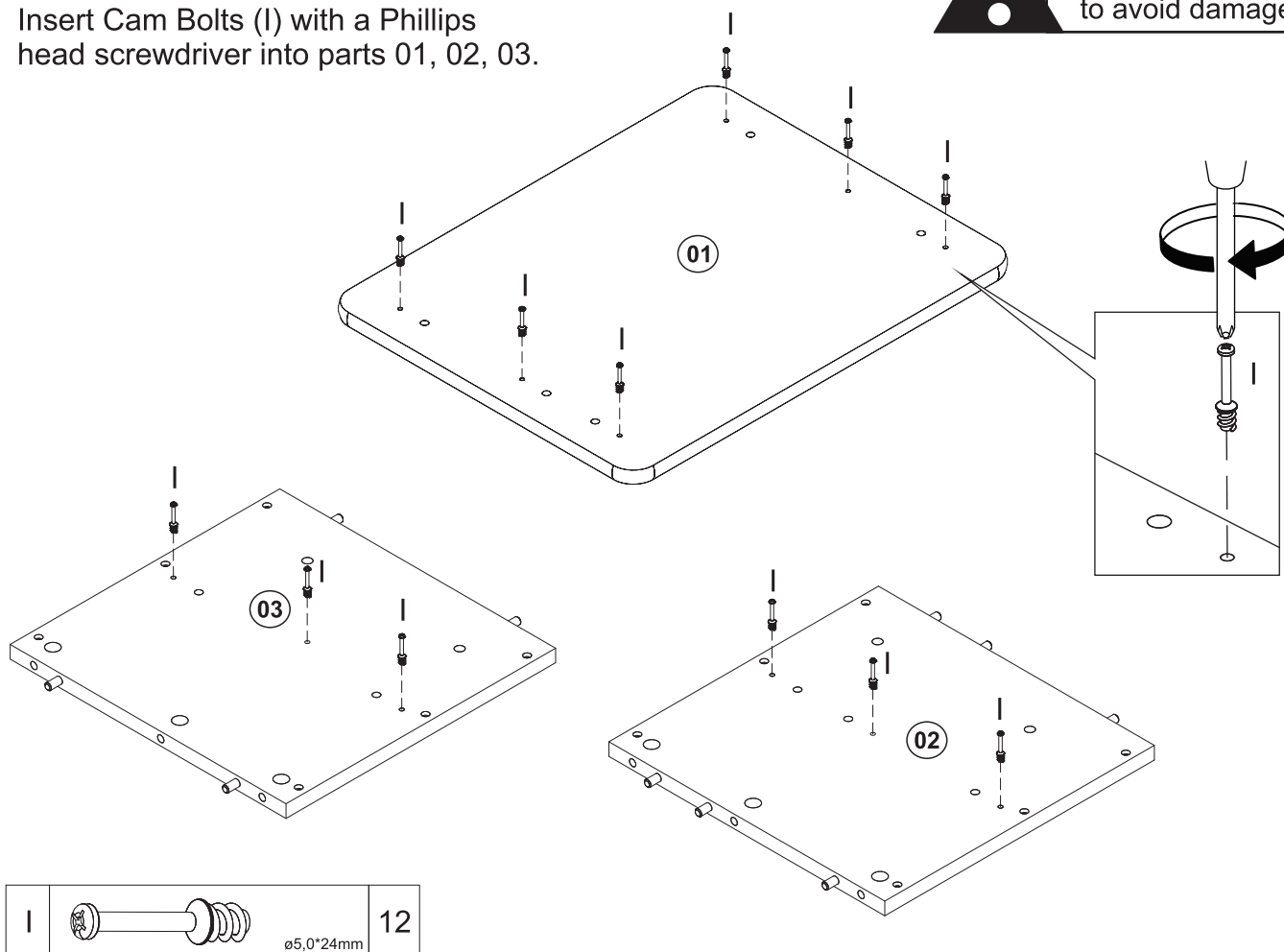


Step 3

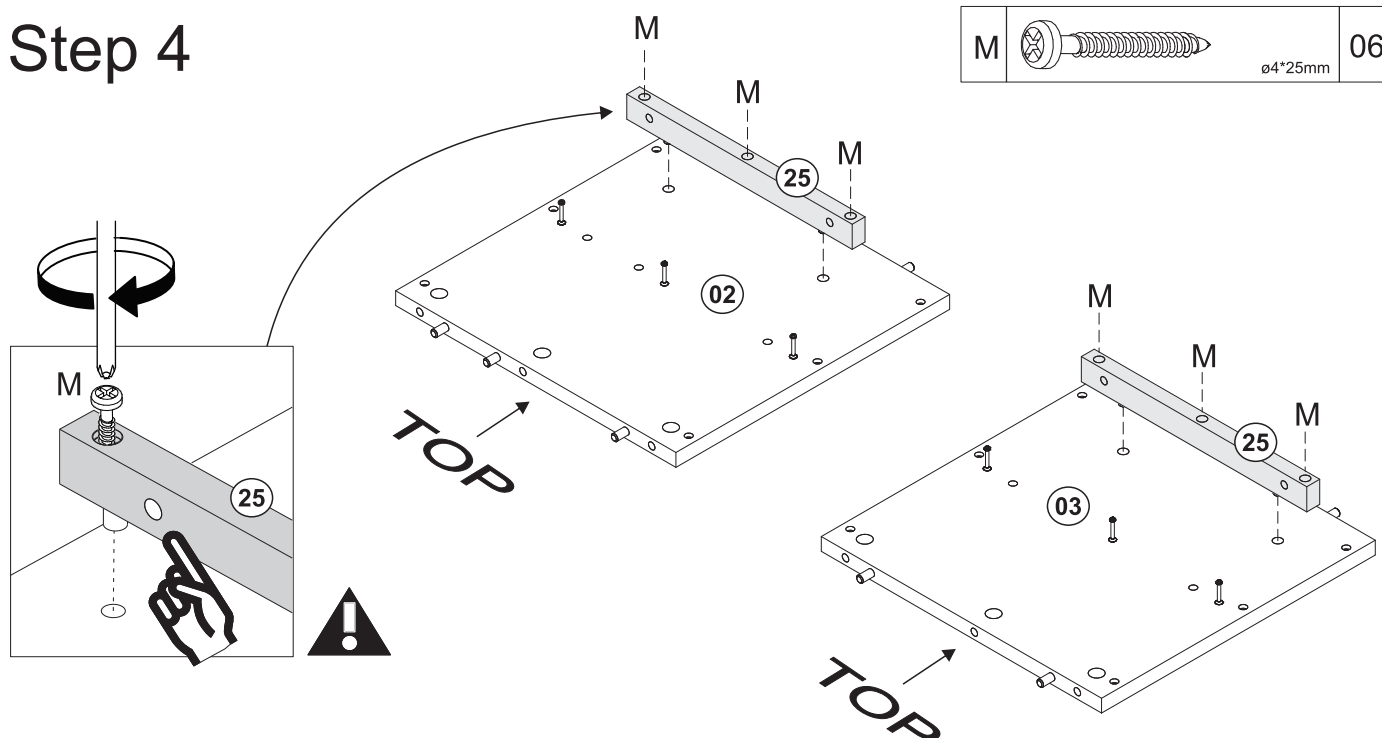
Insert Cam Bolts (I) with a Phillips head screwdriver into parts 01, 02, 03.



Please assemble on a clean soft surface to avoid damage.



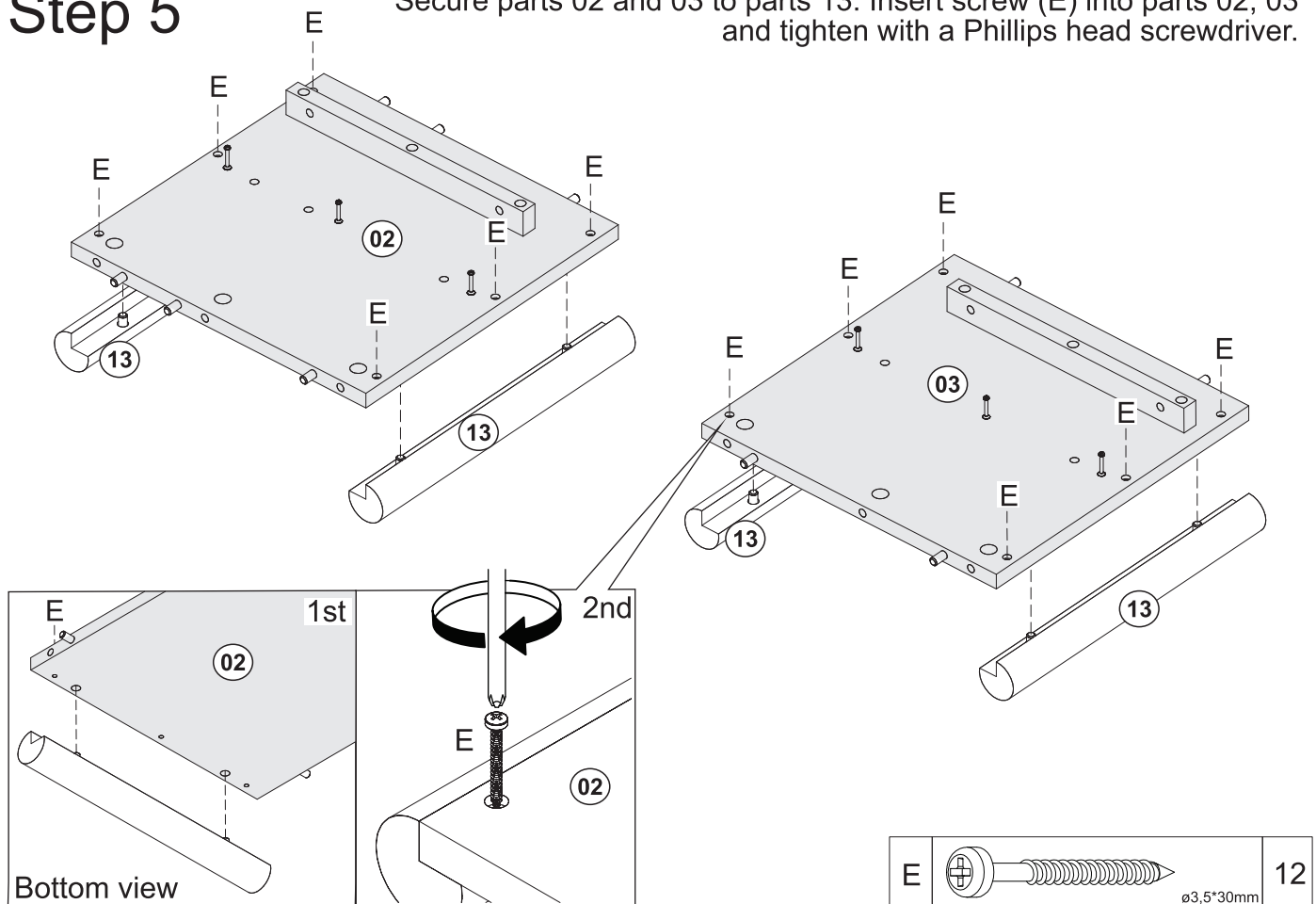
Step 4



Secure parts 25 to parts 02 and 03 with screw (M) and Phillips head screwdriver.

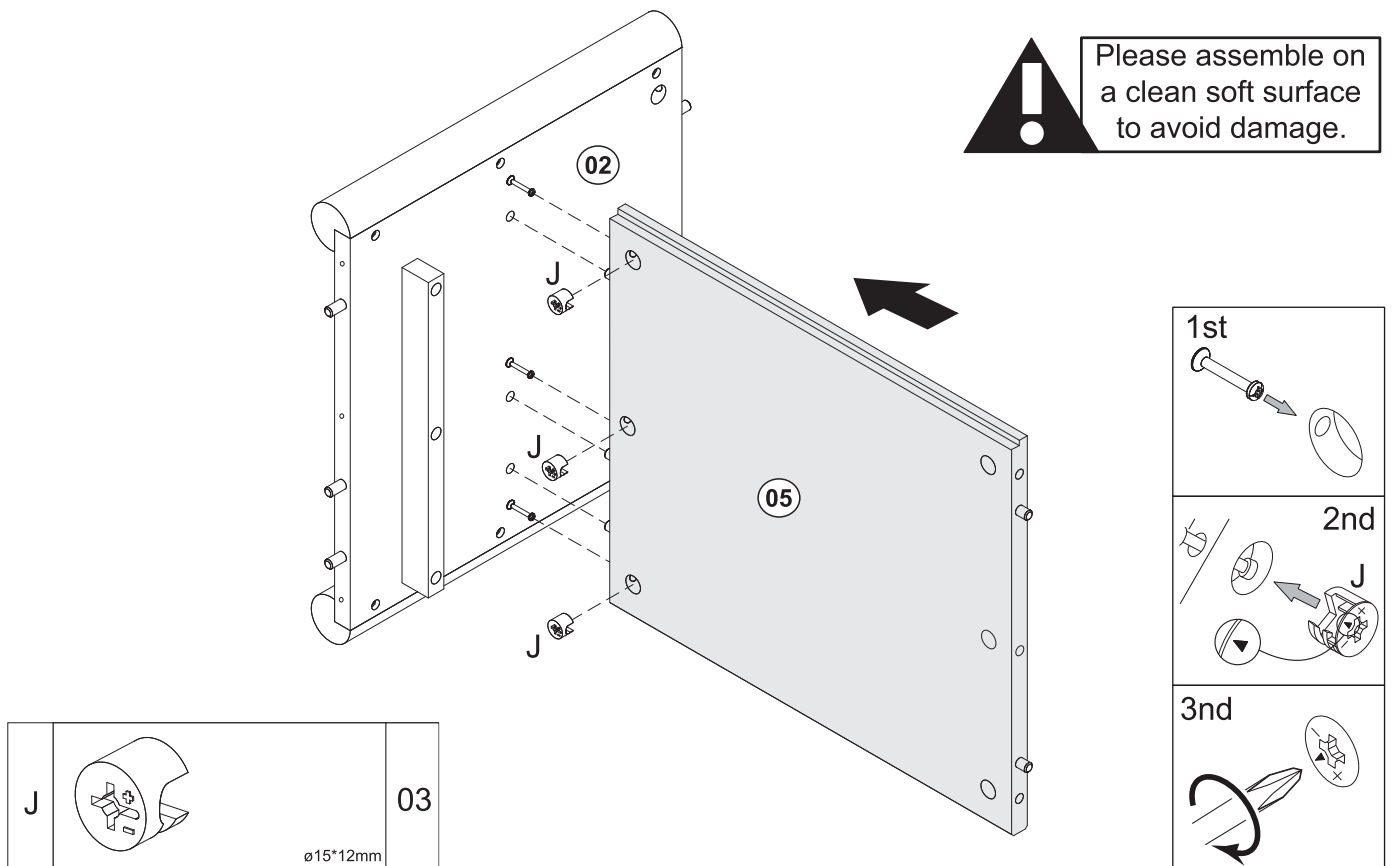
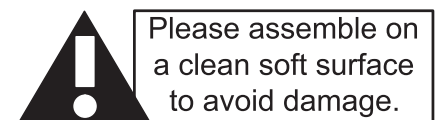
Step 5

Secure parts 02 and 03 to parts 13. Insert screw (E) into parts 02, 03 and tighten with a Phillips head screwdriver.

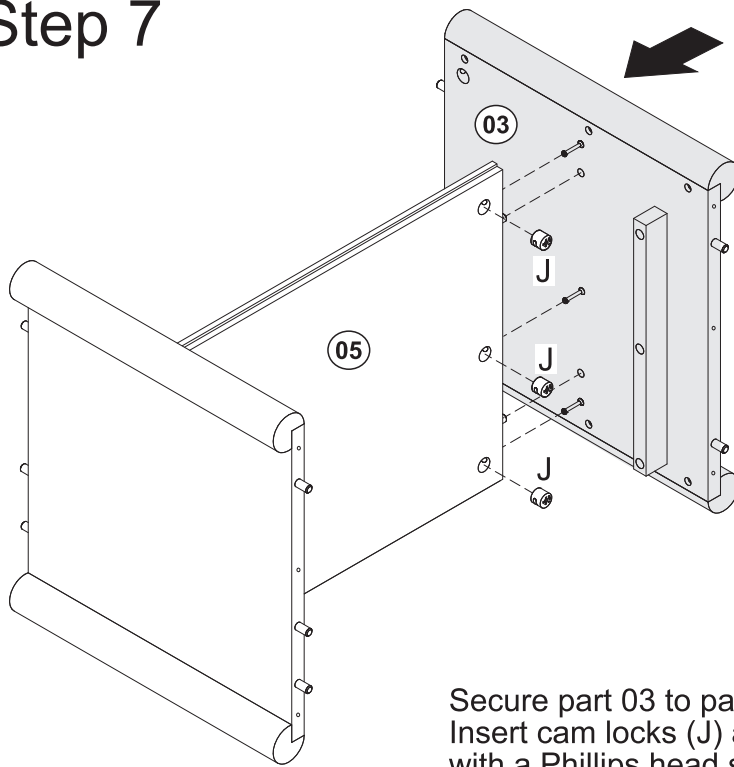


Step 6

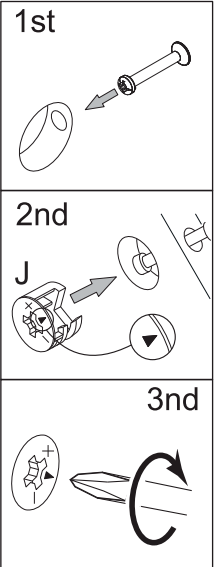
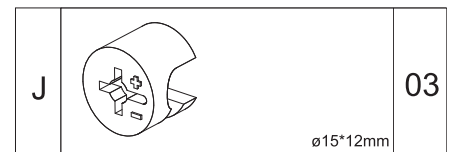
Secure part 05 to part 02. Insert cam locks (J) into part 5 and tighten with a Phillips head screwdriver.



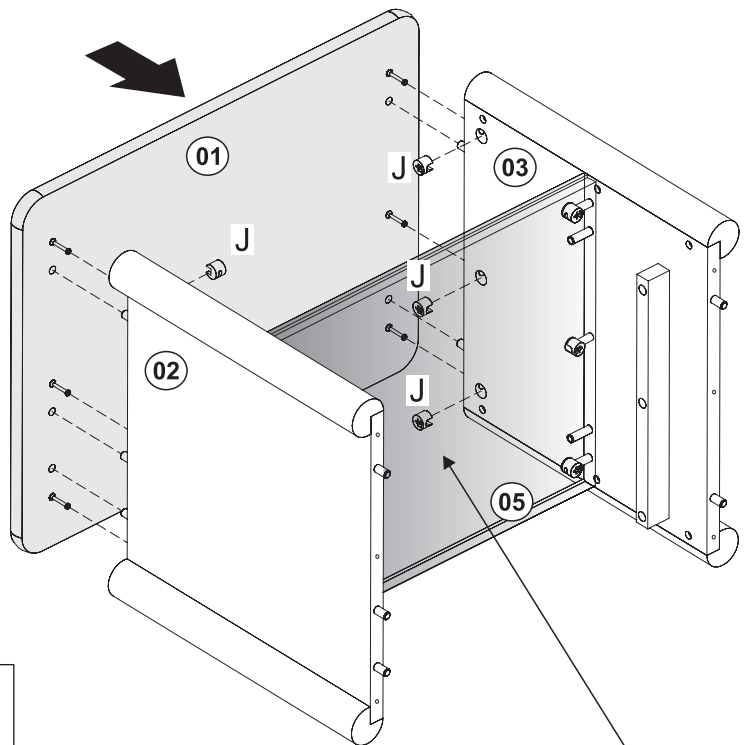
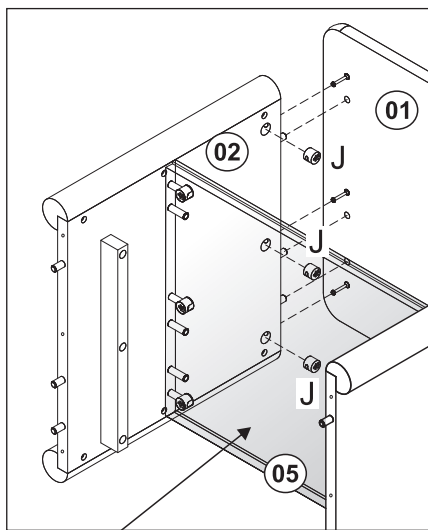
Step 7



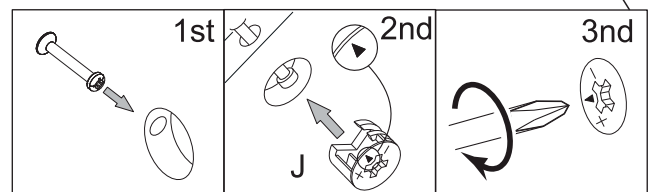
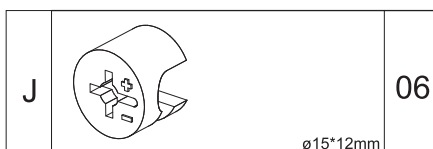
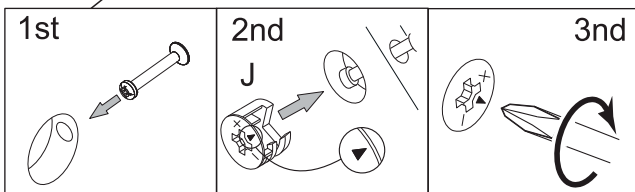
Secure part 03 to part 05.
Insert cam locks (J) and tighten
with a Phillips head screwdriver.



Step 8

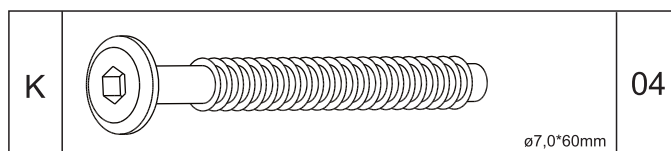
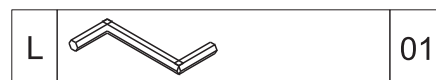
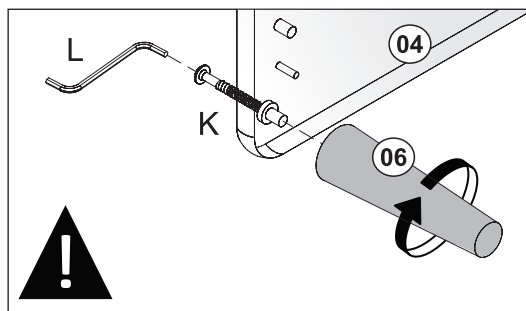
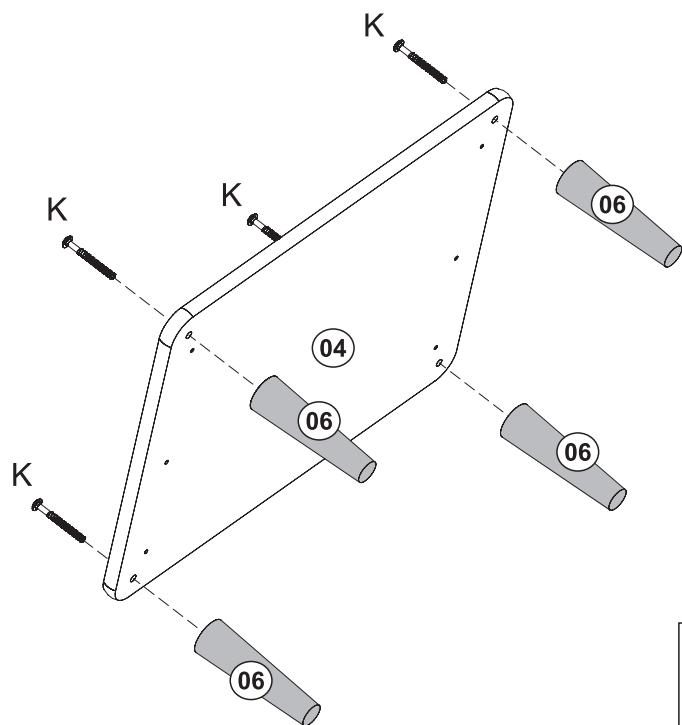


Secure part 01 to parts 02, 03.
Insert cam locks (J) and tighten
with a Phillips head screwdriver.



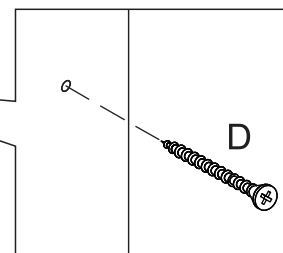
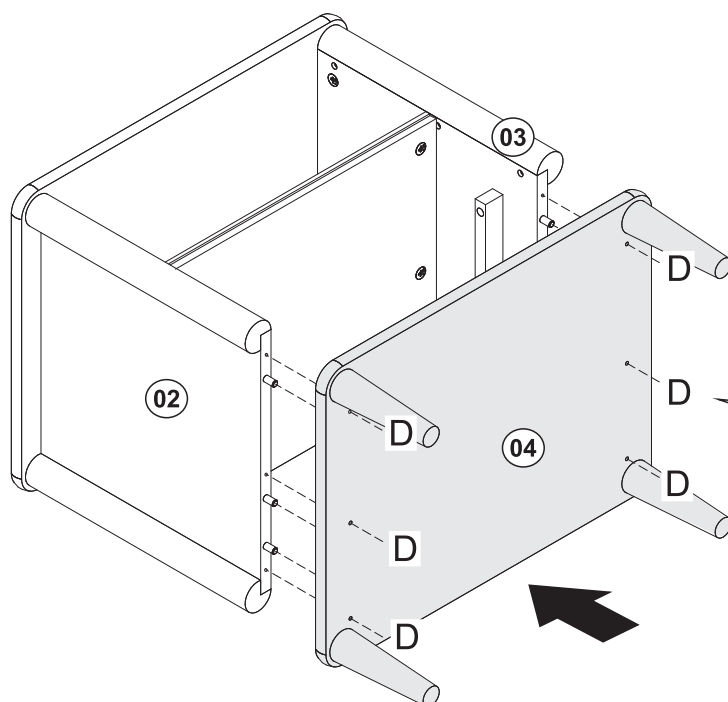
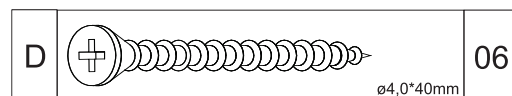
Step 9

Insert screw (K) into parts 04 and 06, secure the screw with hex key (L) while rotate the feet to attach to the unit.



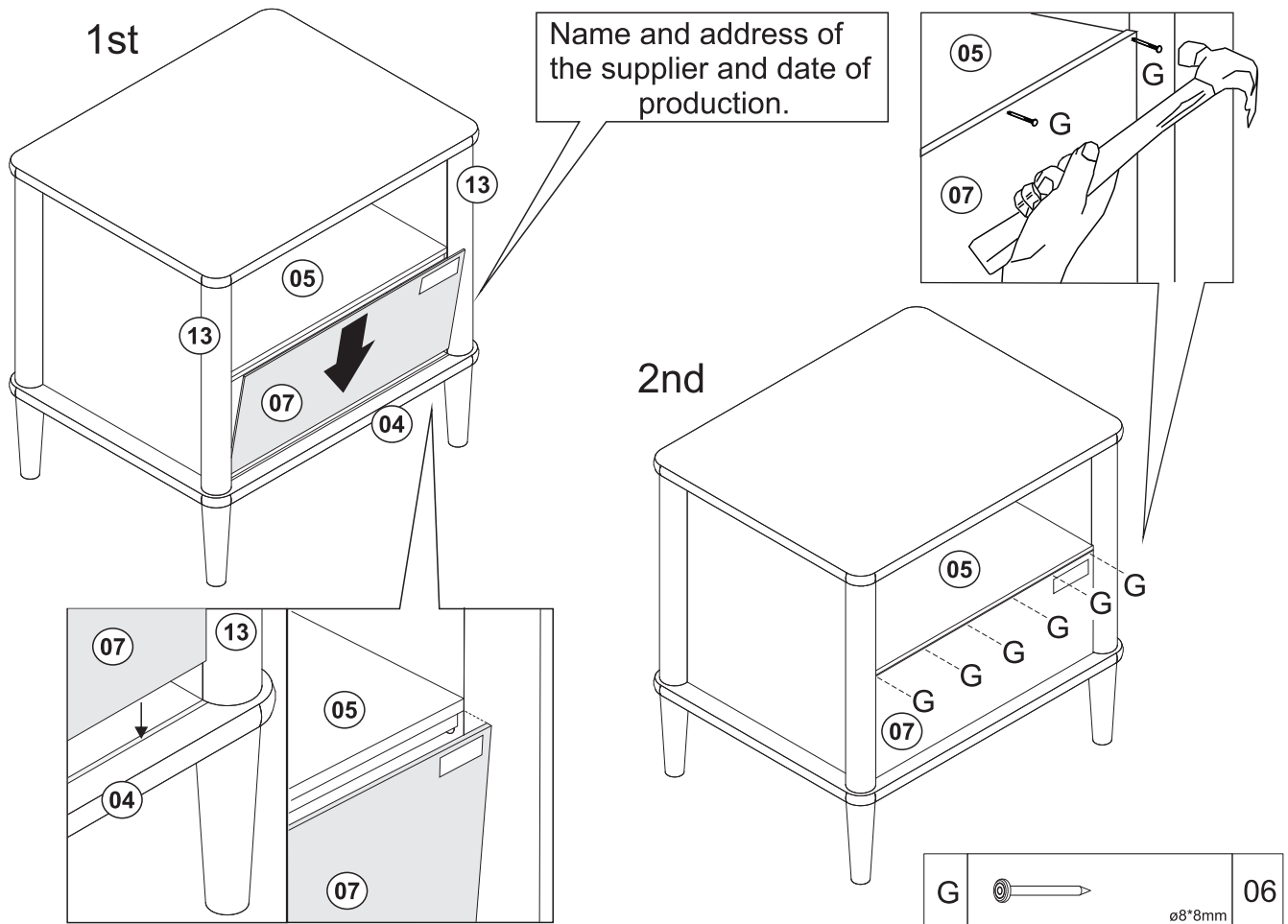
Step 10

Secure part 04 to parts 02, 03 and with screw (D) and phillips head screwdriver.



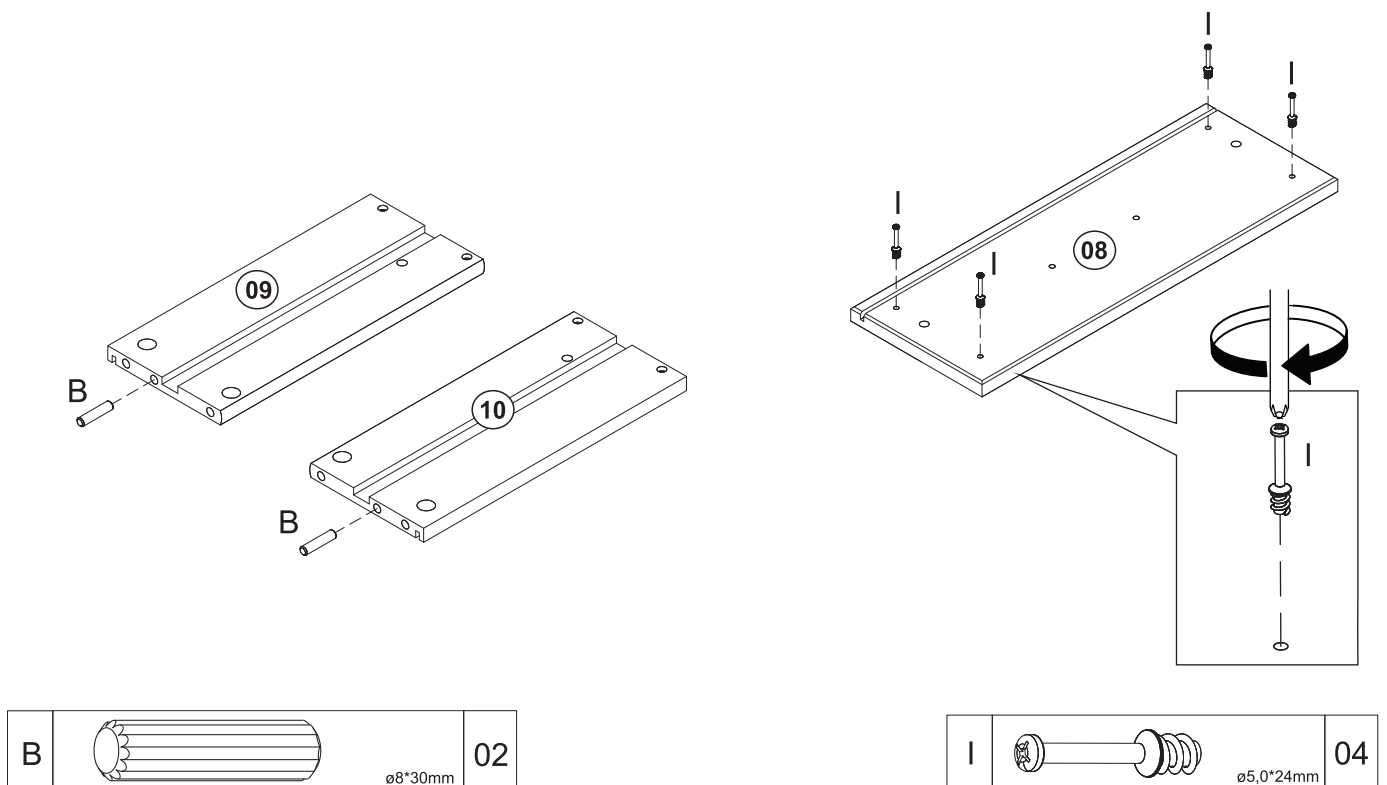
Step 11

Insert part 07 into parts 13. Secure part 07 to part 05 with nail (G) and hammer.

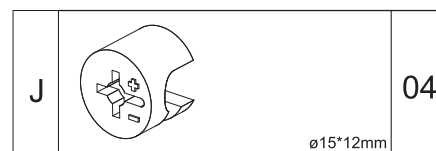
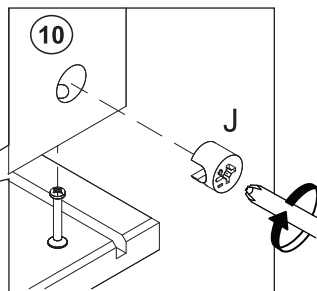
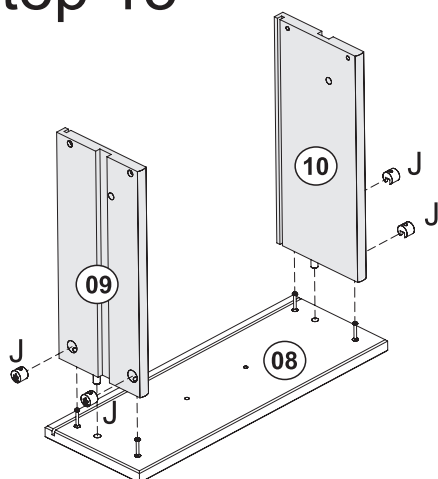


Step 12

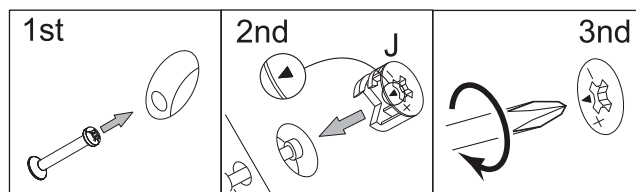
Insert wooden dowel (B) into parts 09, 10. Insert Cam Bolts (I) with a Phillips head screwdriver into part 08.



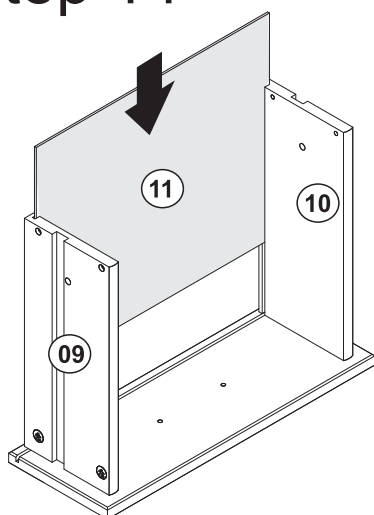
Step 13



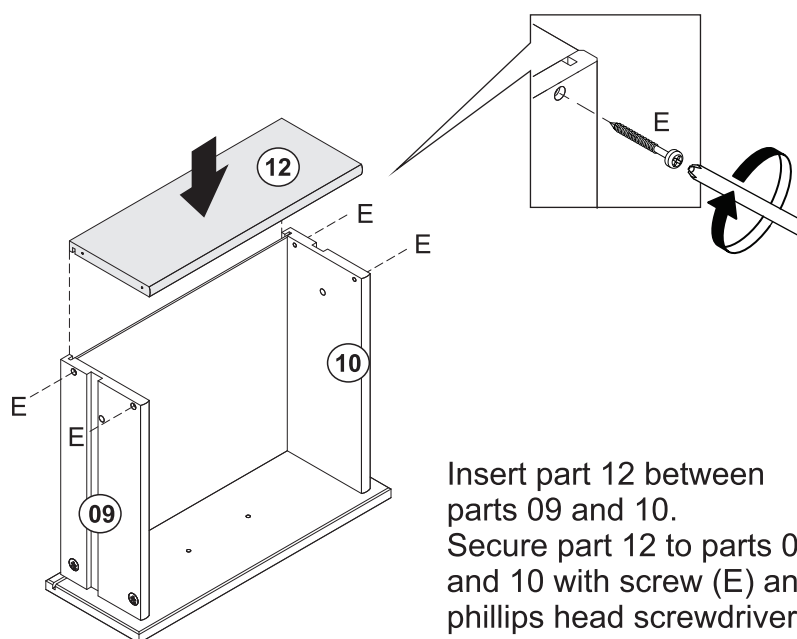
Secure parts 09 and 10 to part 08 using Cam Lock (J) and tighten with a Phillips head screwdriver.



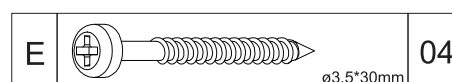
Step 14



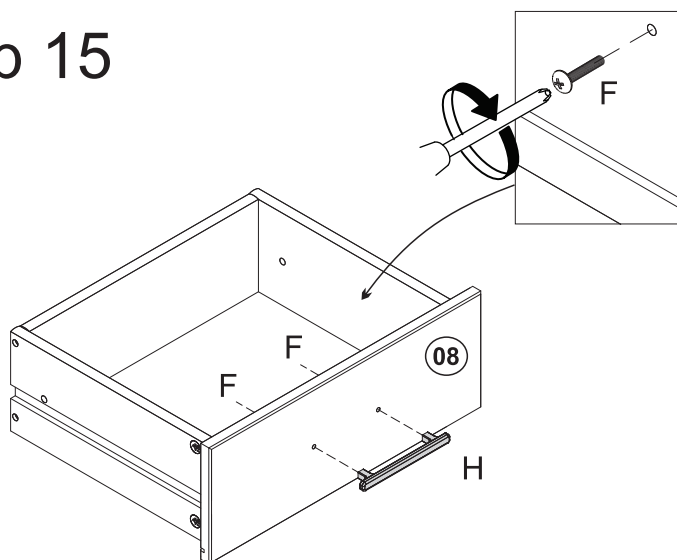
Insert part 11 between parts 09 and 10.



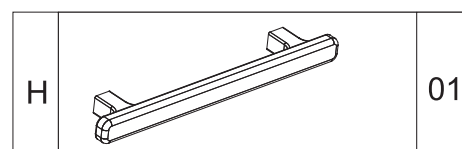
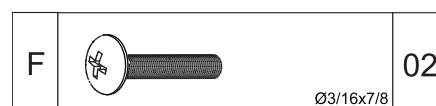
Insert part 12 between parts 09 and 10. Secure part 12 to parts 09 and 10 with screw (E) and phillips head screwdriver.



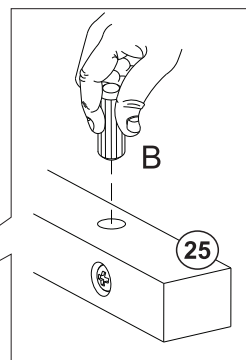
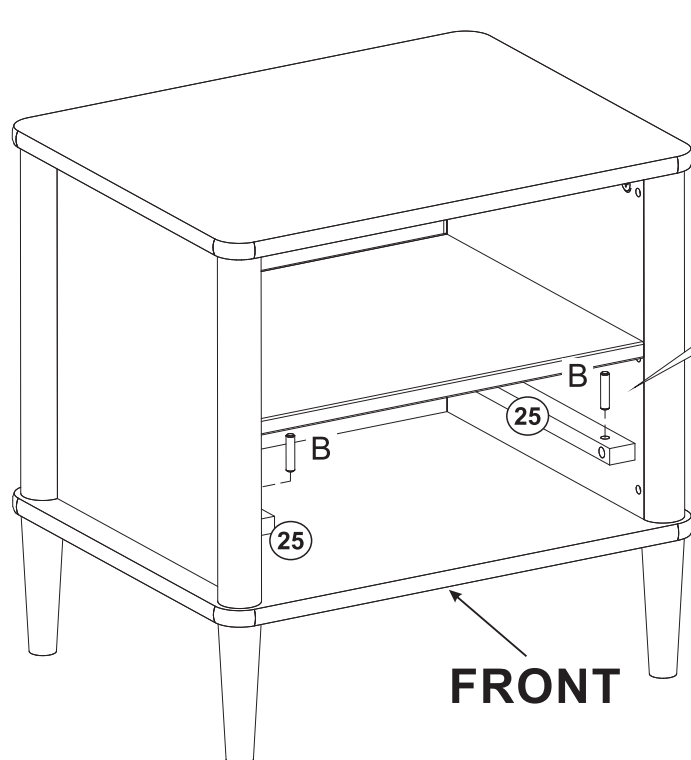
Step 15



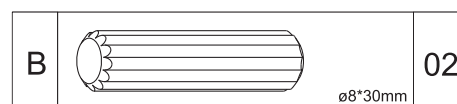
Attach handle (H) with screw (F) and Phillips head screwdriver.



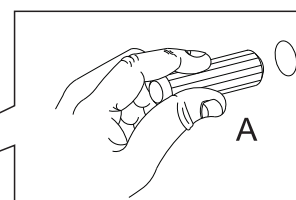
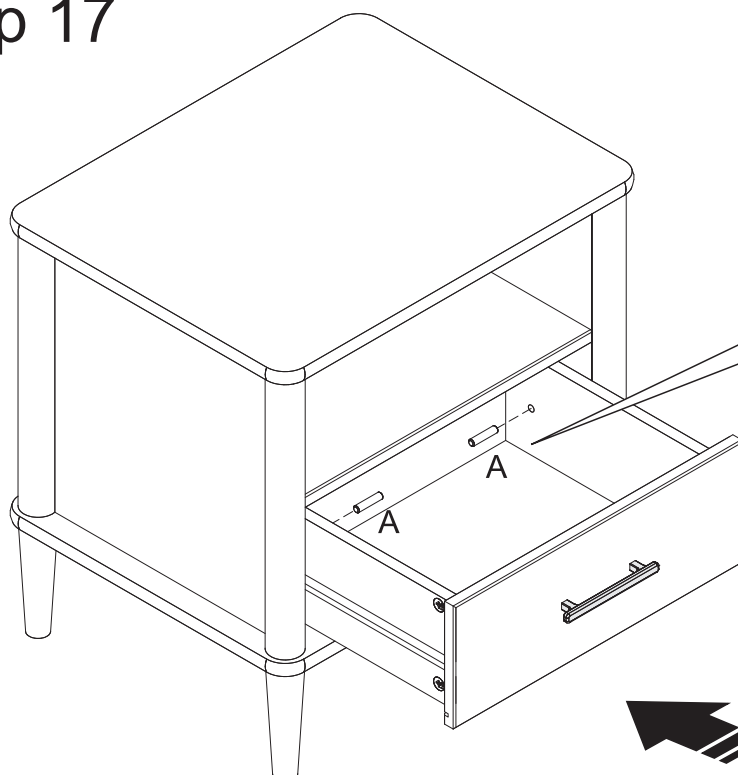
Step 16



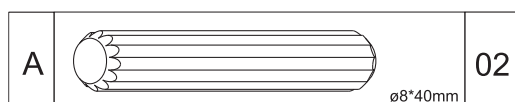
Insert wood dowel (B) into part (25) with hammer.



Step 17



Insert wood dowel (A) on the inside of all drawers, with the drawer inside the unit, after having passed the wood dowel that is in the drawer slide.



Step 18

Insert cam lock cover (N) into cam lock (J) in the parts 02, 03.

