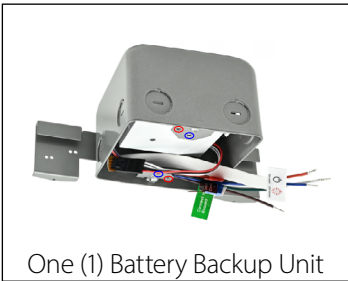




CAUTION

- Make sure all electrical connections conform to the National Electrical Code and all applicable local regulations.
- This is a sealed unit. Components are not replaceable. Replace the entire LED Emergency Backup unit when necessary.
- Equipment should be mounted in locations and at heights where it is not be subjected to tampering by unauthorized personnel.
- The use of accessory equipment is not recommended by the manufacturer and may cause an unsafe condition.
- Use with grounded, UL Listed, dry or damp location rated fixtures. Case should also be grounded.
- Battery is rechargeable Li-ion type and must be recycled or disposed of properly.
- Suitable for use in 0°C -50°C ambient temperatures.
- Please do not place the battery near fire or heat sources; refrain from throwing the battery into a fire; avoid using or charging the battery in locations that exceed the specified temperature parameters; and never get the battery wet, soak it, or throw it into water or seawater.

What's in the Box



Make sure all power is turned off before beginning installation

- 1 The EM unit is intended for new construction installation. It is not able to be used for retrofit installations.

Shut off power to desired circuit before any work. Identify and prepare location for installation.

- 2 Align the lip of the hangar bar with the bottom of the stud and mark mounting hole locations.

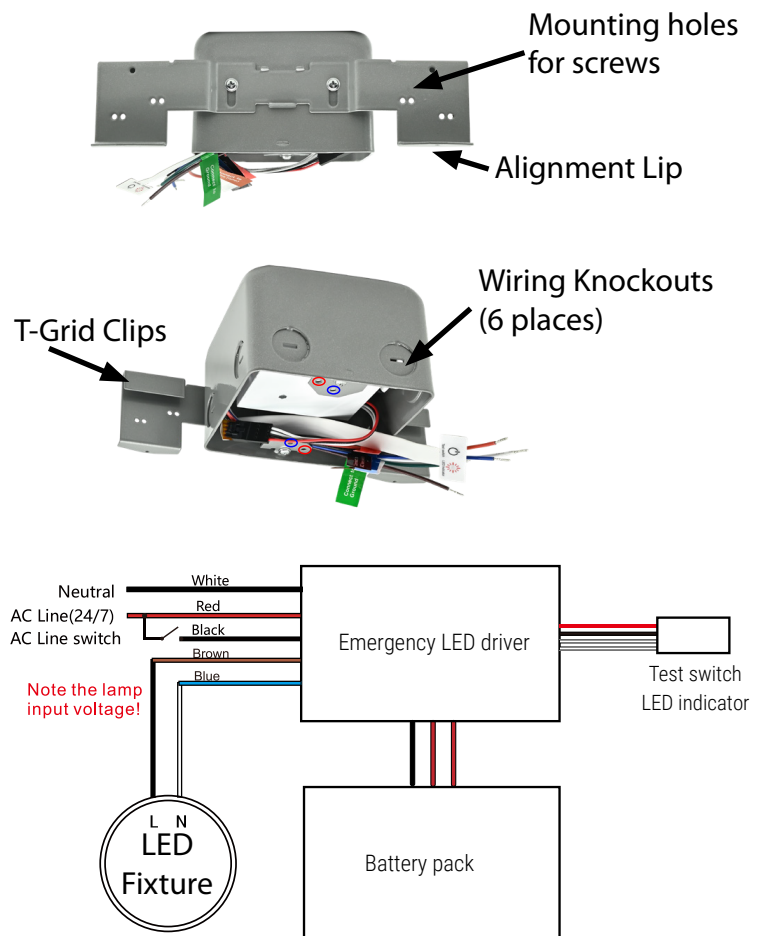
Check alignment of the junction box with the roof level. If box position needs to be adjusted, loosen the two screws, slide the box to the proper position and tighten the screws.

- 3 Remove desired knock-outs for supply wire in and out.

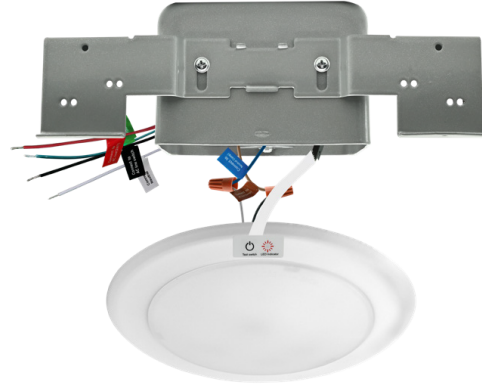
Mount the junction box to the stud and tuck all wires into junction box.

Connect to supply wiring per the wiring diagram.

Note: Junction box can also be hung from T-grid using the clips on the back side of the hangar bar.



- 4 Complete ceiling surface installation and cut opening for junction box.
- 5 Wire the LED fixture to the battery pack per the wiring diagram. If the fixture has a connector, the connector will need to be removed and the wires properly stripped back.
- 6 Remove the adhesive backing on the test switch pilot light and adhere to the flange of the fixture. If the fixture does not have enough space to hold the test switch, it may be adhered to the ceiling surface or t-grid.
- 7 Mount the fixture to the junction box per the fixtures installation instructions.
- 8 Apply power and test the battery pack by looking for the indicator light to be illuminated and pressing the test button.
- 9 Allow the battery to be charge for at least 24 hours before doing a full discharge test.



Subject to the exclusions below, each NICOR branded Emergency Battery Pack, including the electronics and components of a property installed NICOR branded Emergency Battery Pack, will be free from defect in materials and workmanship for a period of five (5) years from the date of manufacture as indicated by the date code printed on the product label.

This limited warranty is provided to you, the purchaser of the product identified on Seller's invoice, as your exclusive remedy and applies only to NICOR products that have been purchased from an authorized NICOR Distributor; the product was new and in an unopened NICOR package at the time of installation; and the NICOR product was installed by a licensed electrician or under the supervision of a licensed electrician and used by consumers in the United States or Canada when accompanied with this warranty. This warranty extends only to the first consumer purchaser and is not transferable.

This warranty is further conditioned upon proper storage, installation, use and maintenance. This warranty is not applicable to any Product which is not installed and operated in accordance with the National Electric Code (NEC), the Standards for Safety of Underwriters' Laboratory, Inc. (UL), the Standards for the American National Standards Institute (ANSI), or, in Canada, the Canadian Standards Association (CSA), and in accordance with NICOR installation instructions.

A consumer wishing to invoke the terms of this limited warranty must first obtain a RGA number within 30 days of discovery of the defect and return the product to NICOR for inspection. Once verified to be covered by this limited warranty, NICOR will, at its sole discretion, repair, replace, or refund the purchase price of any product that does not conform to this limited warranty. If NICOR, at its sole discretion, determines that the product should be repaired or replaced, this warranty is limited to the reasonable, customary, and necessary costs and expenses associated with the repair/replacement. This warranty requires that all repair/replacement estimates and costs, including but not limited to equipment rental (if any), and any other cost or expense to be incurred in the repair/replacement of the product, be approved in advance and in writing by NICOR. FAILURE TO OBTAIN NICOR'S ADVANCE WRITTEN APPROVAL OF ALL REPAIR/REPLACEMENT COSTS AND EXPENSES IN WRITING SHALL VOID THIS LIMITED WARRANTY

THIS LIMITED WARRANTY DOES NOT COVER THE FOLLOWING:

- Defects or damages resulting from improper installation, operation, storage, misuse or abuse, accident, or neglect;
- Defects or damages resulting from improper service, testing, adjustment, installation, maintenance, alteration, connection to out-of-specification electrical service, corrosive or damp environments, or connection to incompatible equipment or devices;
- Damage which occurs in transit;
- Power surges or overheating due to external conditions
- Acts of nature including but not limited to lightning strikes

ANY IMPLIED WARRANTIES, INCLUDING WITHOUT LIMITATION, THE IMPLIED WARRANTIES OF MERCHANTABILITY AND FITNESS FOR A PARTICULAR PURPOSE SHALL BE LIMITED TO THE DURATION OF THIS LIMITED WARRANTY. OTHERWISE THE REPAIR, REPLACEMENT, OR REFUND AS PROVIDED UNDER THIS EXPRESS LIMITED WARRANTY IS THE EXCLUSIVE REMEDY OF THE CONSUMER, AND IS PROVIDED IN LIEU OF ALL OTHER WARRANTIES, EXPRESS OR IMPLIED. IN NO EVENT SHALL NICOR BE LIABLE, WHETHER IN CONTRACT OR IN TORT (INCLUDING NEGLIGENCE) FOR DAMAGES IN EXCESS OF THE PURCHASE PRICE OF THE PRODUCT, OR FOR ANY INDIRECT, INCIDENTAL, SPECIAL OR CONSEQUENTIAL DAMAGES OF ANY KIND, OR LOSS OF REVENUE OR PROFITS, LOSS OF BUSINESS OR OTHER FINANCIAL LOSS ARISING OUT OF OR IN CONNECTION WITH THE ABILITY OR INABILITY TO USE THE PRODUCT TO THE FULL EXTENT THESE DAMAGES MAY BE DISCLAIMED BY LAW.