

4

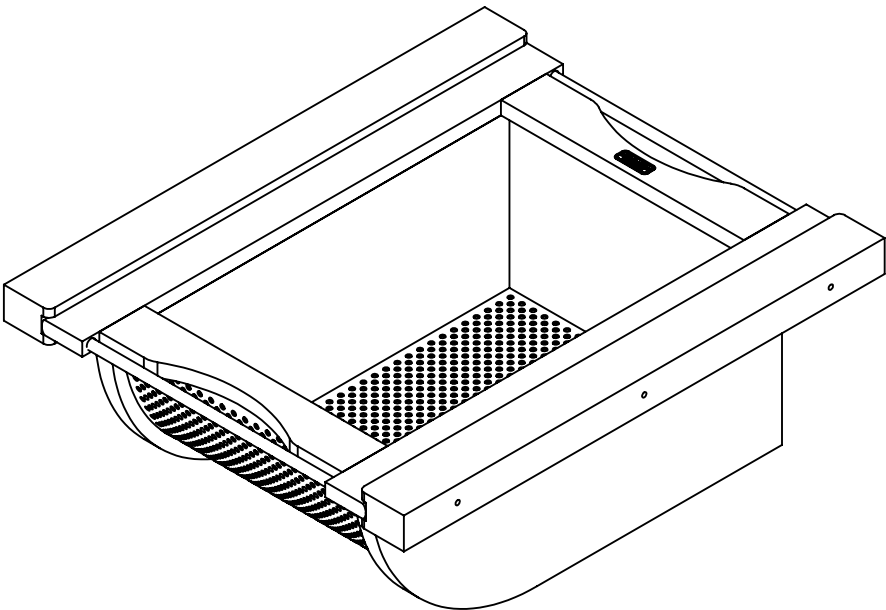
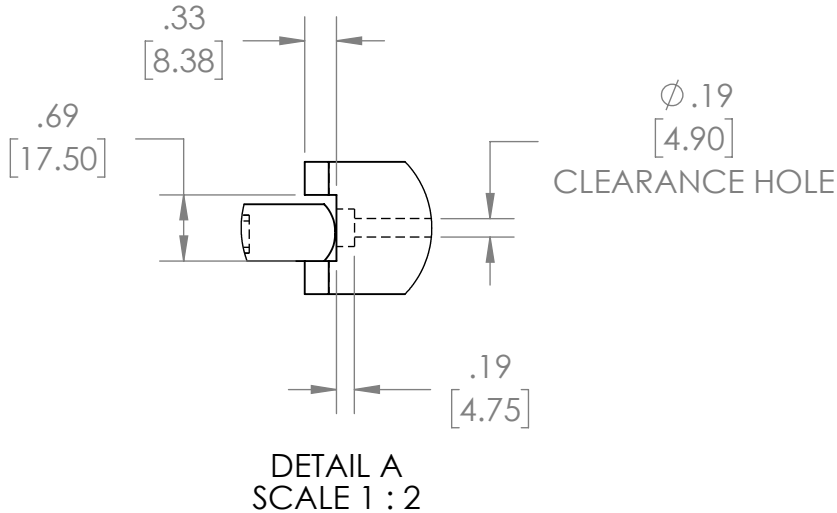
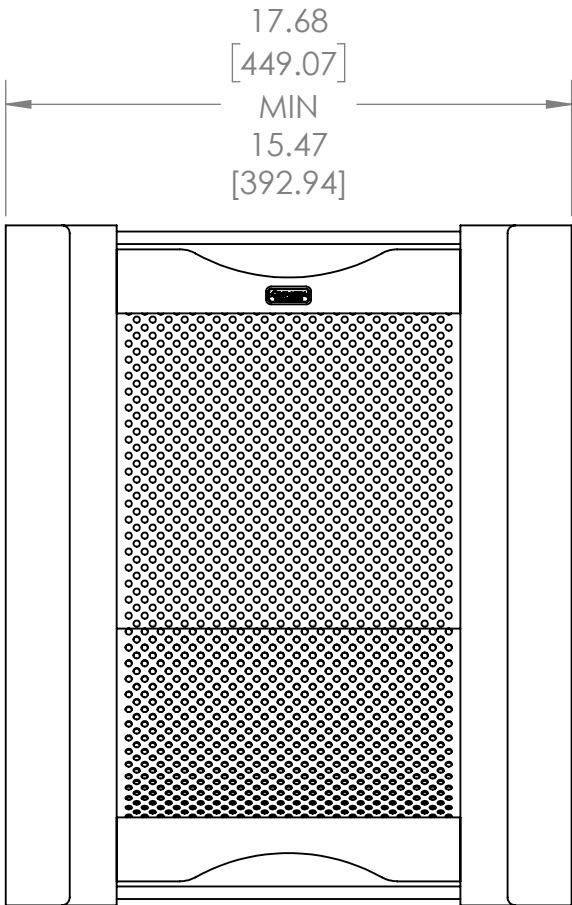
3

2

1

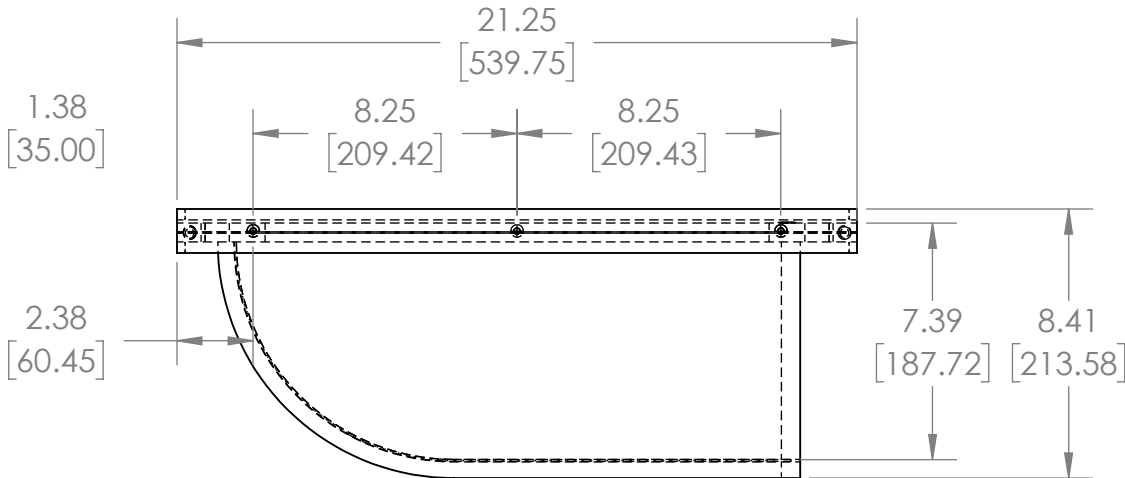
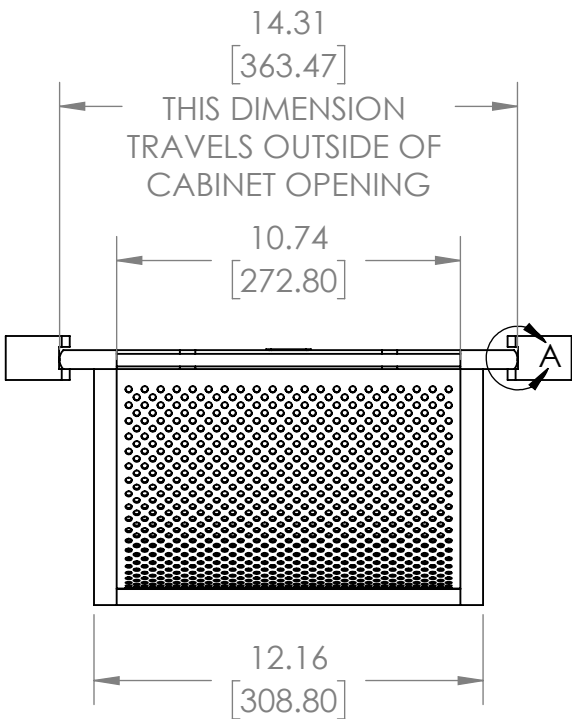
| PART DIMENSIONS | | |
|--------------------|---------------|---------------|
| | MIN | MAX |
| WIDTH | 15.47[392.94] | 17.68[449.07] |
| DEPTH | 21.25[539.75] | 21.25[539.75] |
| HEIGHT | 8.41[213.58] | 8.41[213.58] |
| CONTAINER CAPACITY | 0.60 | |
| CONTAINER UOM | BUSHEL | |

B



B

A




- NOTES:
1. RAIL MATERIAL: MAPLE/WALNUT
 2. BASKET FRAME MATERIAL: MAPLE/WALNUT
 3. BASKET FLOOR FINISH: STAINLESS STEEL/BLACK
 4. INSTALLATION SCREWS NOT PROVIDED

CUSTOMER DRAWING

A

UNCONTROLLED IF PRINTED



REV-A-SHELF

PROPRIETARY AND CONFIDENTIAL

This drawing is the property of Rev-A-Shelf LLC (RAS) and is disclosed in confidence to the extent its subject matter is original to RAS. Any vendor receiving this drawing from RAS shall hold and use this drawing for the sole benefit of RAS and shall not disclose it to, or use or reproduce it for any third party, or perform any act adverse to the interest of RAS with respect to this drawing without the express written permission of RAS. Vendors shall not revise any physical, dimensional or performance characteristic unless authorized by Rev-A-Shelf Engineering.

| REV | DATE | BY | DESCRIPTION OF CHANGE |
|-----|------|----|-----------------------|
| | | | |
| | | | |
| | | | |
| | | | |
| | | | |

| | | | | | |
|------------------------------|--|--|---------------------------------|--|--|
| UNLESS OTHERWISE SPECIFIED: | | | Description: | | |
| TOLERANCES = INCH/(MM) | | | B18 STAINLESS-STEEL | | |
| MAT. DEC. | | | BASKET WITH RAILS | | |
| (WOOD) .XX +/- .03 [.8mm] | | | PART NO. 4SSB-18-XXXX | | |
| (OTHER) .XX +/- .02 [.5mm] | | | SIZE B DWG. NO. 4SSB-18-XXXX | | |
| (ALL) .XXX +/- .005 [.13 mm] | | | SCALE: 1:6 WEIGHT: SHEET 1 OF 1 | | |
| FRACTIONS +/- 1/32 [.8 mm] | | | | | |
| ANGLES +/- 1/2° | | | | | |
| First Angle Projection | | | | | |
| MATERIAL | | | | | |
| FINISH | | | | | |
| DO NOT SCALE DRAWING | | | | | |
| DRAWN | | | | | |
| JAB | | | | | |
| 9/11/24 | | | | | |

4

3

2

1