

# DQD2

## 2" Recessed LED Downlight

### Product Description

The DQD2 LED Downlight allows you to bring general ambient lighting into a space with a minimal aperture size. The high performing light engine with off-board driver allows for more flexible installations and increased lifetime with improved thermal management. The DQD fixture uses a plenum-rated cable connector to link the downlight module to the remote driver box and then pops into place with its adjustable, spring-loaded retention tabs for a secure fit, eliminating the need for a J-box or recessed housing. Adding ambient or accent lighting in areas such as living rooms, hallways, art niches and display cases is now easier than ever.

#### Construction

- Cast aluminum trim routes heat away from electrical components
- Adjustable, spring loaded retention tabs ensure secure fixture retention
- Certified for direct contact with insulation

#### Optical System

- COB with greater than 90 CRI and an R9 greater than 50
- TIR optic provides smooth, uniform light with a 38° beam angle

#### Electrical

- Off-board driver minimizes installation height and maximizes fixture life through improved heat management
- 120V input to driver
- Dimmable to less than 5% with compatible TRIAC dimmers
- Operating temperature rating of 0°F to 120°F (-18°C to 49°C)
- Lifetime rated for greater than 60,000 hours
- LM-79, LM-80 testing performed in accordance with IESNA standards

#### Finish

- White powder coat finish

#### Installation

- Spring loaded retention arms allow for easy installation with no need for a recessed housing
- Off-board driver/junction box includes two 1/2" KOs and three-port poke-in connectors
- Extension power cables (2', 10', 20') available
- Suitable for damp locations

#### Warranty

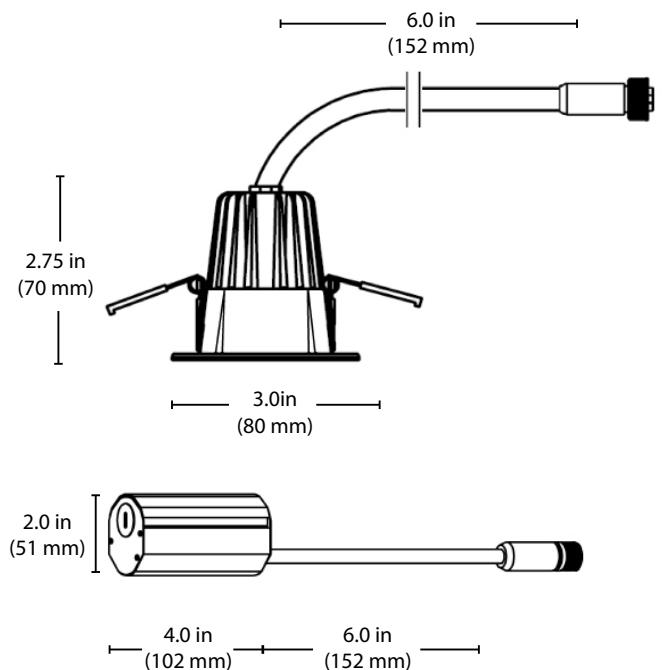
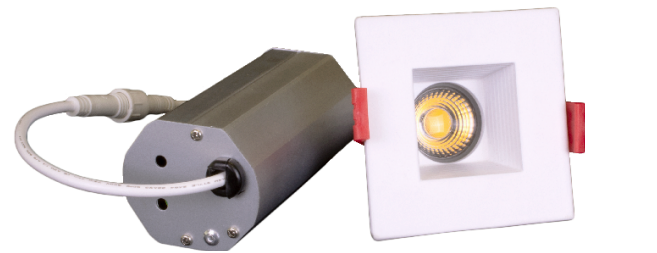
- 5-year limited system warranty standard
- Warranty does not cover product failure due to an overvoltage event (power surge)
- For installations where power surge may be possible, NICOR recommends installing additional surge protection at the electrical distribution panel

Project

Catalog

Type

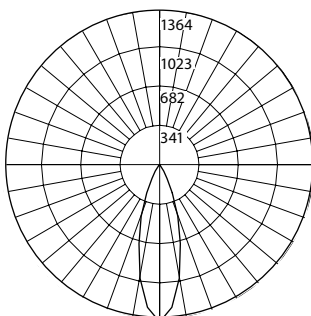
Date



## Photometric Data

### DQD2 2700K

Input Voltage (VAC)	120V
System Level Power (W)	8.3
Delivered Lumens (Lm)	575
System Efficacy (Lm/W)	69.6
Correlated Color Temp (K)	2734
Color Rendering Index (CRI)	98
Beam Angle	38.2°
Spacing Criteria	0.65



#### Intensity Summary (Candle Power)

Angle	Mean CP
0	1364
5	1295
15	845
25	354
35	50
45	10
55	7
65	5
75	3
85	1
90	0

#### CCT Data Multiplier

DQD2-10-120-3K	1.029
DQD2-10-120-4K	1.056
DQD2-10-120-4K	1.082

#### Cone of Light Tabulation

Mounted height (Feet)	Footcandles Beam Center	Diameter (Feet)
4	80.1	2.8
6	35.6	4.2
8	20.0	5.6
10	12.8	7.0
12	8.9	8.4
14	6.5	9.8
16	5.0	11.2

#### Zonal Lumen Summary

Zone	Lumens	% of Luminaire
0-30	510	88.8%
0-40	550	95.7%
0-60	565	98.3%
0-90	575	100.0%
90-180	0	0.0%
0-180	575	100.0%

Fixture tested per LM-79-08. Photometric data is of the performance of a representative fixture. Results may vary in the field.

#### Performance Data

Model Number	Lumens	Watts	Lumens/Watt
DQD211202KWHBF	575	8.3	69.6
DQD211203KWHBF	592	8.3	71.3
DQD211204KWHBF	607	8.3	73.1
DQD211205KWHBF	622	8.3	74.9

#### Recommended Dimmers\*

Legrand Adorne softTap ADT703TU703TU
Lutron DIVA DVELV-303P
Lutron RADIO RA RRD-6CL
Lutron Skylark SELV-300P
LEVITON C22-06672-1LW

#### Accessories

2" Rough In Template	ROUGHIN-TEMPLATE-2
24" Extension Cable	DLE-EXTCABLE-24
10' Extension Cable	DRIVER-EXTCABLE-10
20' Extension Cable	DRIVER-EXTCABLE-20

\*Not a complete list. Check compatibility before installation.

## Ordering Information

Example: DQD211203KWHBF

Series	Version	Voltage	CCT's	Trim Color	Baffle
DQD2	1 (Version 1)	120 (120V)	2K (2700 K)	WH (White)	BF (Baffle)
			3K (3000 K)		
			4K (4000 K)		
			5K (5000 K)		

Specifications and dimensions subject to change without notice.