

IMS1WWD

Single-Gang Decora Device Wallplate

Product Description

The IMS1WWD wallplate is constructed from durable thermoplastic and provides excellent resistance to impact, abrasion, and long-term wear in high use environments. Compatible with the IMS1SWMD.

Construction

- Thermoplastic
- Smooth face and rounded edges resist dust accumulation
- Insusceptible to mechanical stress associated with high abuse applications

Finish

- Color: White

Listings

- cULus Listed
- UL94V-2 (FLame Resistance)

Warranty

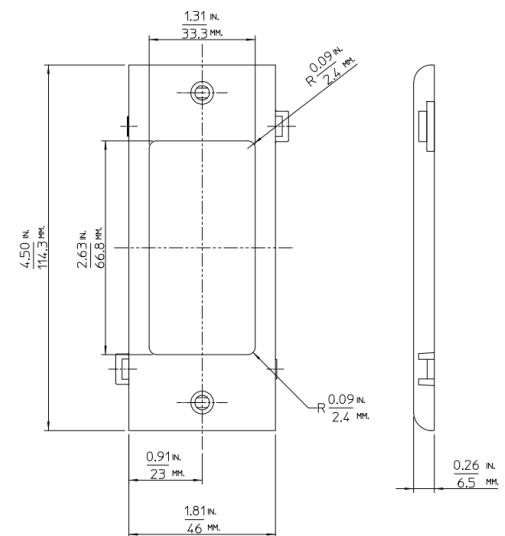
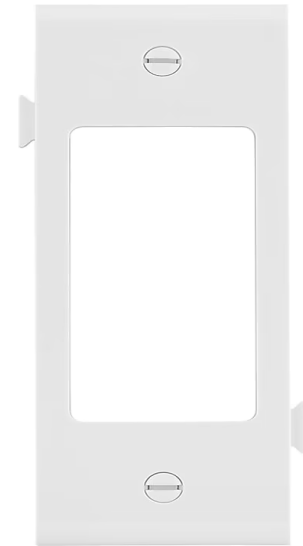
- 3-year limited system warranty standard

Project

Catalog

Type

Date



Ordering Information

Series

IMS1WWD