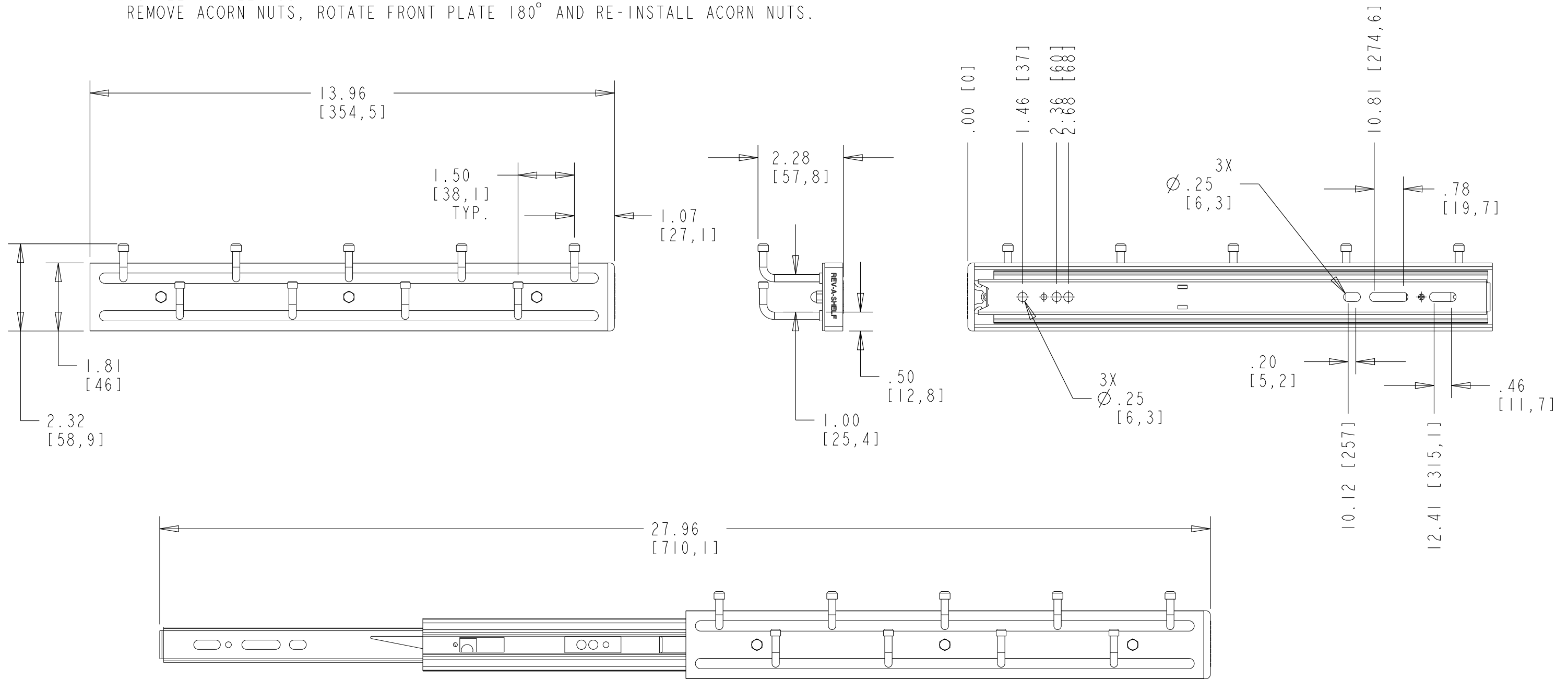


NOTE: SHOWN FOR RIGHT WALL MOUNT.
 FOR LEFT WALL MOUNT:
 REMOVE ACORN NUTS, ROTATE FRONT PLATE 180° AND RE-INSTALL ACORN NUTS.



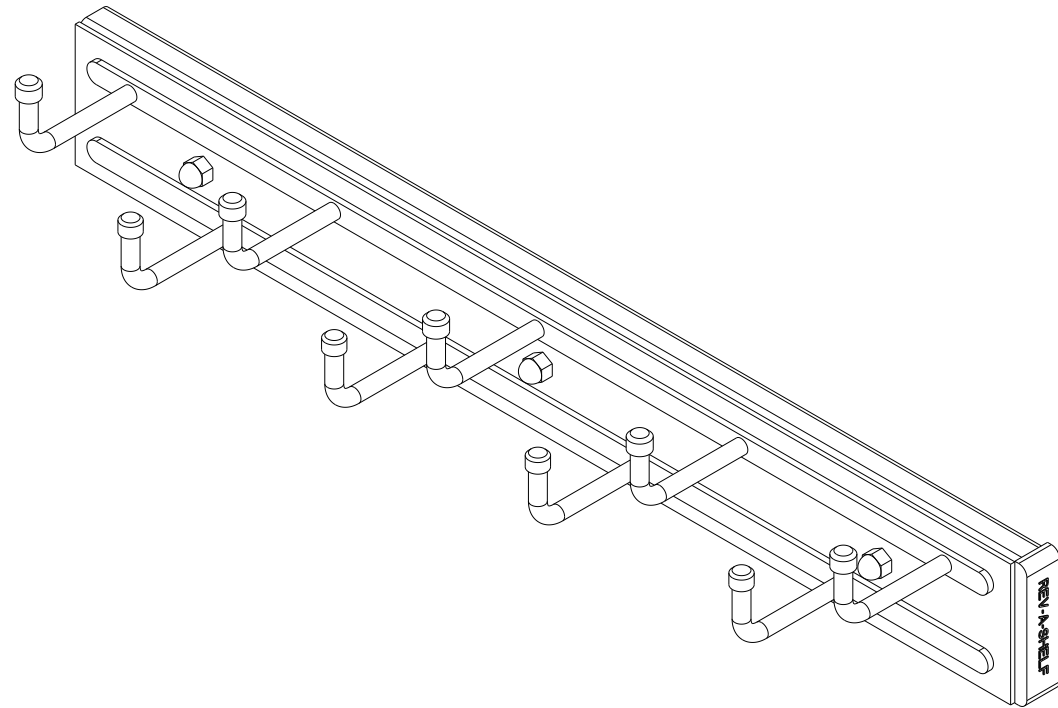
OPEN VIEW

CUSTOMER DRAWING

This drawing is the property of Rev-A-Shelf (RAS) and is disclosed in confidence to the extent its subject matter is original to RAS. Any vendor receiving this drawing from RAS shall hold and use this drawing for the sole benefit of RAS and shall not disclose it to, or use or reproduce it for any third party, or perform any act adverse to the interest of RAS with respect to this drawing without the express written permission of RAS. Vendors shall not revise any physical, dimensional or performance characteristic unless authorized by Rev-A-Shelf Engineering.

REV.	DATE	BY	DESCRIPTION OF CHANGE
A	9-20-11	KRR	ECN11-058

INCH [MM]	AMERICAN PROJECTION	DRAWN	BY	DATE	REV-A-SHELF, INC.	
			KRR	11-24-10	SIZE B	14" BELT RACK
TOLERANCES		ANGLES ±1/2°	MATERIAL	DRAWING NO.	SCALE	
MAT.	DEC.		FINISH	BRC-14CR_CUST	0.375	
(WOOD)	.XX ±.03 [.8mm]			PART NO.	SHEET OF	
(OTHER)	.XX ±.02 [.5mm]			BRC-14CR	1 2	
(ALL)	.XXX ±.005 [.13 mm]					
FRACTIONS	±1/32 [.8 mm]					



NOTE: HOLDS 9 TIES

PART DIMENSIONS		
	MIN	MAX
WIDTH	2.28	
DEPTH	13.96	27.96
HEIGHT	2.32	
WEIGHT		
DIAMETER		
RADIUS		
CONTAINER CAPACITY		
CONTAINER UOM		

MIN CABINET OPENING	
WIDTH	2.50
DEPTH	13.96
HEIGHT	N/A

PRODUCT MAX WEIGHT RATING

SLIDE SPECIFICATIONS				
SLIDE TYPE	BALL BEARING	SLIDE EXTENSION	1/4" O.T.	MAX WEIGHT RATING
SLIDE CLOSING	NORMAL	SLIDE LENGTH	350 MM	
SLIDE MOUNTING	SIDE	SLIDE FINISH		100 LB

CUSTOMER DRAWING

This drawing is the property of Rev-A-Shelf (RAS) and is disclosed in confidence to the extent its subject matter is original to RAS. Any vendor receiving this drawing from RAS shall hold and use this drawing for the sole benefit of RAS and shall not disclose it to, or use or reproduce it for any third party, or perform any act adverse to the interest of RAS with respect to this drawing without the express written permission of RAS. Vendors shall not revise any physical, dimensional or performance characteristic unless authorized by Rev-A-Shelf Engineering.

REV.	DATE	BY	DESCRIPTION OF CHANGE
A	9-20-11	KRR	ECN11-058

INCH [MM]	AMERICAN PROJECTION	DRAWN	BY	DATE	REV-A-SHELF, INC.
			KRR	11-24-10	
					SIZE
					B
					14" BELT RACK
			MATERIAL	DRAWING NO.	SCALE
			FINISH	BRC-14CR_CUST	0.500
				PART NO.	SHEET OF
				BRC-14CR	2 OF 2

TOLERANCES
 MAT. DEC.
 (WOOD) .XX ±.03 [.8mm]
 (OTHER) .XX ±.02 [.5mm]
 (ALL) .XXX ±.005 [.13 mm]
 FRACTIONS ±1/32 [.8 mm]

ANGLES
 ±1/2°