

Constitution EPCO Series

LED Post Top Lighting



Project Name _____

Date _____ Type _____

Notes _____

GLI Brands Utility Roadway Representatives Exclusively

- Reliable, uniform, glare free illumination
- Types I, II, III, IV Wide, V, V Square and V Wide distributions
- Amber, 3000K, 4000K, 5000K CCT
- 0-10V dimming ready
- Integral Surge protection: 10k in parallel, 20k in series

CONSTRUCTION

Housing:	Aluminum 360 alloy
Lens:	LED engine, TIR optics, gasket and bezel plate
Paint:	Cast Aluminum, Black, Dark Bronze, RAL & Customer colors available
Weight:	29lbs. (13.2kg)

OPTICAL SYSTEM

Lumens:	2,200 – 7,700
Distribution:	Type I, Type II, Type III, Type IV Wide, Type V Square & Type V Wide
Efficacy:	29-125.5 LPW
CCT:	Amber, 3000K, 4000K, & 5000K
CRI (Min):	70

ELECTRICAL

Input Voltage:	120-277V
Input Frequency:	50/60Hz
Power Factor:	>0.95 @ Full Load 120-277V
Total Harmonic Distortion:	<10% @ Full Load 120-277V

SURGE PROTECTION*

Standard	Optional
10kV/5kA	20kV/10kA

*Per ANSI C136.2-2015

WARRANTY

5 Year (Standard)

10 Year (Optional)

LUMEN MAINTENANCE

Projected Lxx per IES TM-21 at 25°C

SKU	LXX(10K) @ Hours		
	25,000 HR	50,000 HR	60,000 HR
EPCO	L98	L95	L94

Note: Projected LXX based on LM80 (> 10,000 hour testing). Accepted Industry tolerances apply to initial luminous flux and lumen maintenance measurements.

AMBIENT TEMPERATURE FACTOR

Ambient Temp (°C)	Initial Flux Factor	Ambient Temp (°C)	Initial Flux Factor
10	1.02	30	0.99
20	1.01	40	0.98
25	1.00		

RATINGS

Operating Temperature:	-30°C to 40°C
Vibration:	Available upon request
LM-79:	Available upon request
EPA:	1.33

CONTROLS

Dimming:	Standard - 0-10V
Sensors:	Finial Location - Motion, Daylight Photo Control

EPCO 02

PROD. ID	GEN.	VOLTAGE	LUMEN OUTPUT	DISTRIBUTION	LENS	CCT	CONTROLS PER ANSI C136.41	MOUNTING	COLOR	OPTIONS
E = Evolve	02 = 2nd Gen	0 = 120-277V	295 = 4723 - 5632 No Lens, 3471 - 4128 Clear Lens, 2243 - 2473 Diffused Lens	A = Type I	NL = No Lens	AM = Amber-595nm Peak	1 = None	AD3 = Adapter for 3" pole	BLCK = Black	HS = House Side Shield
P = Post Top			525 = 4884 - 5775 No Lens, 5686 - 6780 Clear Lens, 3675 - 4050 Diffused Lens	B = Type II	CL = Clear Lens	30 = 3000K	A = 7-Pin Receptacle	AD5 = Adapter for 5" Pole	DKBZ = Dark Bronze	R = Secondary 10kV/5kA SPD
CO = Constitution			615 = 5528 - 6592 No Lens, 6491 - 7740 Clear Lens, 4195 - 4624 Diffused Lens	C = Type III*	DL = Diffused Lens	40 = 4000K	D = 7-Pin Receptacle with Shorting Cap			T = Secondary 20kV/10kA SPD
				E = Type IV, Wide		50 = 5000K	E = 7 Pin Receptacle with Long Life non-Dimming PE Control			XXX = Special Options
				F = Type V, Square						
				G = Type V, Wide*						

*Diffused lens only offered in C and G (DISTRIBUTION)

For additional information on EPCO IES files, please click the following link:

[EPCO IES Files](#)

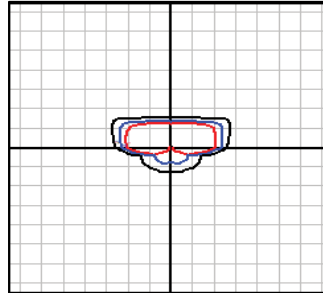
PERFORMANCE DATA

LUMEN OUTPUT	REFRACTOR		TYPICAL INITIAL LUMENS			BUG RATINGS		
	DIST CODE	CODE	3000K	4000K	5000K	3000K	4000K	5000K
295	A	NL	3807	3960	4128	B1-U0-G1	B1-U0-G1	B1-U0-G1
295	B		3596	3740	3899	B1-U0-G1	B1-U0-G1	B1-U0-G1
295	C		3471	3611	3764	B1-U0-G1	B1-U0-G1	B1-U0-G1
295	E		3501	3642	3796	B1-U0-G1	B1-U0-G1	B1-U0-G1
295	F		3818	3971	4140	B2-U0-G1	B2-U0-G1	B2-U0-G1
295	G		3529	3670	3826	B2-U0-G1	B2-U0-G1	B2-U0-G1
295	A		CL	3242	3373	3516	B1-U0-G1	B1-U0-G1
295	B	3062		3186	3321	B1-U0-G1	B1-U0-G1	B1-U0-G1
295	C	2957		3075	3206	B1-U0-G1	B1-U0-G1	B1-U0-G1
295	E	2982		3102	3233	B1-U0-G1	B1-U0-G1	B1-U0-G1
295	F	3252		3382	3526	B2-U0-G1	B2-U0-G1	B2-U0-G1
295	G	3005		3126	3259	B2-U0-G1	B2-U0-G1	B2-U0-G1
295	C	DL		2243	2334	2433	B1-U0-G1	B1-U0-G1
295	G		2280	2372	2473	B1-U0-G1	B1-U0-G1	B1-U0-G1
525	A	NL	6235	6486	6761	B1-U0-G1	B1-U0-G1	B1-U0-G1
525	B		5889	6126	6386	B1-U0-G1	B1-U0-G1	B1-U0-G1
525	C		5686	5914	6165	B1-U0-G2	B1-U0-G2	B1-U0-G2
525	E		5734	5965	6218	B1-U0-G2	B1-U0-G2	B1-U0-G2
525	F		6253	6504	6780	B2-U0-G1	B2-U0-G1	B3-U0-G1
525	G		5779	6012	6267	B3-U0-G1	B3-U0-G1	B3-U0-G1
525	A		CL	5311	5524	5758	B1-U0-G1	B1-U0-G1
525	B	5016		5218	5439	B1-U0-G1	B1-U0-G1	B1-U0-G1
525	C	4842		5037	5251	B1-U0-G1	B1-U0-G1	B1-U0-G1
525	E	4884		5080	5296	B1-U0-G2	B1-U0-G2	B1-U0-G2
525	F	5326		5540	5775	B2-U0-G1	B2-U0-G1	B2-U0-G1
525	G	4922		5120	5337	B3-U0-G1	B3-U0-G1	B3-U0-G1
525	C	DL		3675	3822	3984	B1-U0-G1	B1-U0-G1
525	G		3735	3885	4050	B2-U0-G1	B2-U0-G1	B2-U0-G1
615	A	NL	7118	7404	7718	B1-U0-G1	B1-U0-G1	B1-U0-G1
615	B		6723	6994	7290	B1-U0-G1	B1-U0-G2	B1-U0-G2
615	C		6491	6752	7038	B1-U0-G2	B1-U0-G2	B1-U0-G2
615	E		6546	6809	7098	B1-U0-G2	B1-U0-G2	B1-U0-G2
615	F		7138	7425	7740	B3-U0-G1	B3-U0-G1	B3-U0-G1
615	G		6598	6863	7154	B3-U0-G1	B3-U0-G1	B3-U0-G1
615	A		CL	6063	6306	6574	B1-U0-G1	B1-U0-G1
615	B	5726		5956	6209	B1-U0-G1	B1-U0-G1	B1-U0-G1
615	C	5528		5750	5994	B1-U0-G1	B1-U0-G1	B1-U0-G2
615	E	5575		5800	6045	B1-U0-G2	B1-U0-G2	B1-U0-G2
615	F	6080		6324	6592	B2-U0-G1	B2-U0-G1	B2-U0-G1
615	G	5619		5845	6093	B3-U0-G1	B3-U0-G1	B3-U0-G1
615	C	DL		4195	4364	4549	B1-U0-G1	B1-U0-G1
615	G		4264	4436	4624	B2-U0-G1	B2-U0-G1	B2-U0-G1

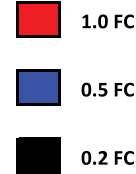
EPCO-02-615-A-40-NL

LUMINAIRE DATA

Description	4000 Kelvin, 70CRI
Delivered Lumens	7406
Watts	70.25
Efficacy	105
IES Type	I
BUG Rating	B1-U0-G1
Mounting Height	15 ft
Grid Scale	15 ft



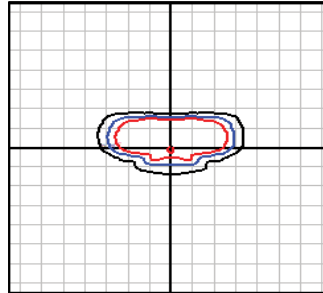
15' Mounting Height



EPCO-02-615-B-40-NL

LUMINAIRE DATA

Description	4000 Kelvin, 70CRI
Delivered Lumens	6995
Watts	70.25
Efficacy	100
IES Type	II
BUG Rating	B1-U0-G2
Mounting Height	15 ft
Grid Scale	15 ft



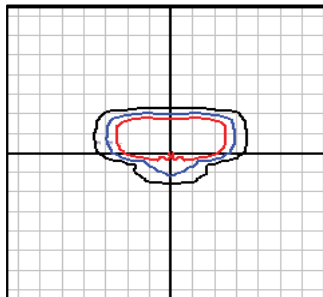
15' Mounting Height



EPCO-02-615-C-40-NL

LUMINAIRE DATA

Description	4000 Kelvin, 70CRI
Delivered Lumens	6752
Watts	70.25
Efficacy	96
IES Type	III
BUG Rating	B1-U0-G2
Mounting Height	15 ft
Grid Scale	15 ft



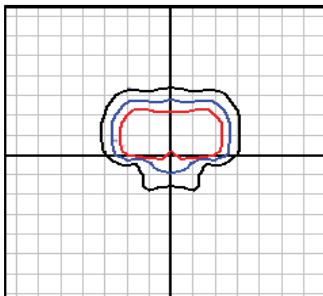
15' Mounting Height



EPCO-02-615-E-40-NL

LUMINAIRE DATA

Description	4000 Kelvin, 70CRI
Delivered Lumens	6809
Watts	70.25
Efficacy	97
IES Type	IV
BUG Rating	B1-U0-G2
Mounting Height	15 ft
Grid Scale	15 ft



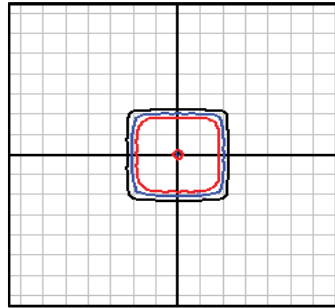
15' Mounting Height



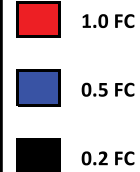
EPCO-02-615-F-40-NL

LUMINAIRE DATA

Description	4000 Kelvin, 70CRI
Delivered Lumens	7425
Watts	70.25
Efficacy	106
IES Type	VS
BUG Rating	B3-U0-G1
Mounting Height	15 ft
Grid Scale	15 ft



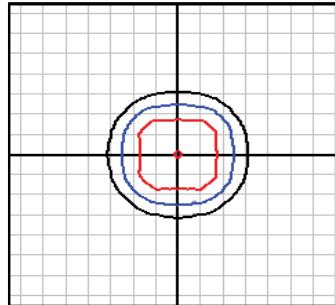
15' Mounting Height



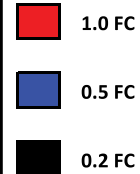
EPCO-02-615-G-40-NL

LUMINAIRE DATA

Description	4000 Kelvin, 70CRI
Delivered Lumens	6864
Watts	70.25
Efficacy	98
IES Type	VS
BUG Rating	B3-U0-G1
Mounting Height	15 ft
Grid Scale	15 ft



15' Mounting Height



Constitution/EPCO Series

LED Post Top Lighting

Mounting & Accessories

Project Name _____

Date _____ Type _____

Notes _____

