



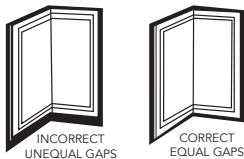
12400 Earl Jones Way
Louisville, KY 40299
rev-a-shelf.com
Customer Service: 800-626-1126



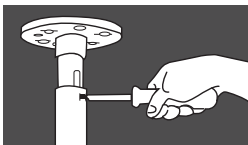
ADJUSTMENT INSTRUCTIONS

LD-PM LAZY DAISY

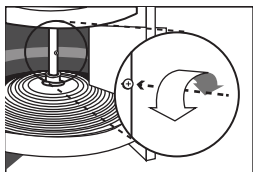
TO ADJUST DOOR HEIGHT



1. To adjust the door height, grasp the top portion of telescopic tube, loosen telescopic locking screw and lower top portion of telescopic tube approximately 1/8" to ensure height adjustment clearance. Re-tighten the telescopic locking screw.



2. Rotate the doors to the right, exposing the height adjustment screw.

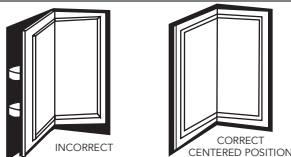


3. Turn the screw to the right to raise the doors and turn to the left to lower the doors.

*Trays do not need to be unloaded to adjust (Up to 100 lbs.).

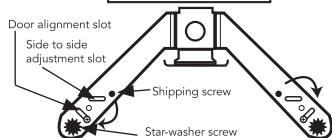
VIDEO INSTRUCTIONS: WWW.REV-A-SHELF.COM/VIDEOS

TO ADJUST DOOR CLOSING ALIGNMENT



1. Open the doors so that one side of the bottom mounting bracket can be seen.

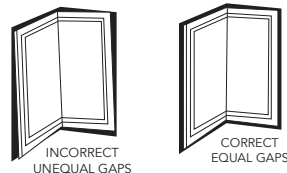
2. Remove the shipping screw and loosen the star-washer screw. If the door is out of alignment to the left, insert shipping screw into the right side of the slot. Reverse if alignment is out to the right. Repeat on both sides of bottom mounting bracket.



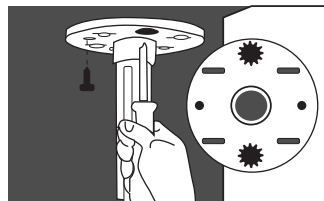
3. Rotate bracket to the left or right depending on which way the doors should go.

4. Tighten the door alignment screws and close the door to check alignment. Repeat if necessary.

TO ADJUST FOR SIDE/SIDE CLEARANCE

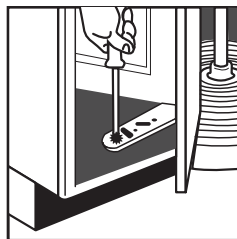


1. Remove the shipping screws then loosen the front and back star-washers.



2. Adjust the mounting bracket to correct the gap between the sides of the door and frame at the top and then the bottom.

3. Tighten, check, and repeat if necessary. For top adjustment, re-insert shipping screw in any unused hole or slot.



REMOVAL OF THE LAZY DAISY SUSAN UNIT

1. Detach doors from both the top and bottom trays then remove the shipping pin from above the top tray.

2. Lift bottom tray and remove bottom tray securing pin then lift top tray and remove top tray securing pin.

3. Loosen telescopic locking screw and lower upper portion of telescopic tube.

4. Lift both trays to the middle of the cabinet.

5. Tilt bottom of the tube and remove brake pivot post.

6. Rotate trays so the complete unit can be removed from cabinet then remove trays from tube.

7. Remove top and bottom mounting brackets.

