



Recessed **LED** Downlight System

**DLR4v6 | DLR56v6 Series**



**Energy Efficient, High Quality Lighting**



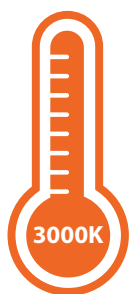
## INTRODUCING THE NEWEST LED DOWNLIGHT SYSTEM

The newest generation of DLR downlights now meets Title 20 efficiency standards and are available in both Single and Selectable CCT. The DLRv6 offers both a 4" and 5"/6" recessed LED downlight that is ideal for new construction using standard housings or the patented NICOR new construction frame.

Also easily installed as a retrofit into most existing 4", 5" or 6" housings. Available in single 3000K CCT or with the versatility of a Selectable model allowing the choice of 2700K, 3000K, 3500K, 4000K, or 5000K CCT. For improved aesthetics and installation, the DLRv6 series offers smooth and baffle magnetic trims.

### AVAILABLE IN SINGLE OR SELECT CCT

For maximum adjustability choose between five different CCTs to best suit your space.



SINGLE CCT



SELECTABLE

### UPGRADED ATTACHMENT TECHNOLOGY

New magnetic trim attachment simplifies installation. Available in **Black**, **Nickel**, and **Oil-Rubbed Bronze** in both smooth and baffle.



### APPLICATIONS:

Ideal for residential and multi-family construction, both new or retrofit installation. Perfect for living rooms, bedrooms and hallways.



## REDUCED GLARE

Increased trim depth provides lower glare and a quieter operation.

## STEEL TRIM

Powder coated steel trim, available in both smooth and baffle, routes heat away from electrical components.



## IDEAL LUMINAIRE CONNECTOR

Makes for quick and easy installation.

## ULTRA LOW PROFILE

Designed for patented DLR frame use and for use in shallow housings.



## EDISON BASE SOCKET STRING

Ships with Edison base socket string for retrofit installation.



**LUMENS**

934



**EFFICACY**

91 Lumens/Watt



**LIFETIME**

54,000 Hours

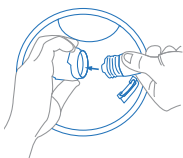


**CRI**

94

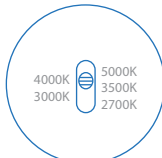
\*See spec sheet for 4" and high output performance data

## INSTALL IN 4 EASY STEPS



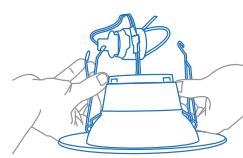
1

Install Edison or GU24 base or connect with IDEAL style connector.



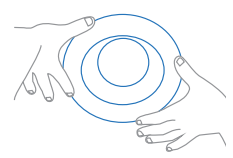
2

If installing a Selectable model, adjust to desired CCT.



3

Squeeze torsion springs into brackets inside housing



4

Push fixture flush with ceiling. Attach optional magnetic trim.



For new construction use NICOR's patented canless frame. 4": DLR4-5-FRAME | 5/6": DLR56-5-FRAME





## WAREHOUSE LOCATIONS

**Albuquerque, NM**

Atlanta, GA

**Buford, GA**

Detroit, MI

Folcroft, PA

Roseville, CA

T 800.821.6283

[www.nicorlighting.com](http://www.nicorlighting.com)

2200 Midtown Place NE  
Albuquerque, NM 87107 USA



LIT-DLRV6-10PK  
20230117



**NICOR®**

© 2023 NICOR® • ALL RIGHTS RESERVED