

## EAL Series Luminaires

### Shielding Specification & Ordering Guide

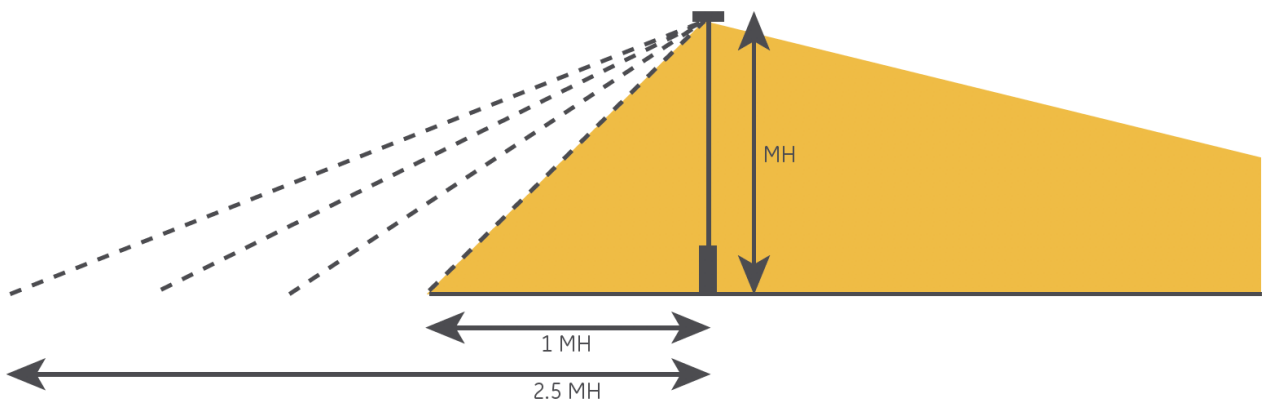


The next evolution of the **Evolve**<sup>®</sup> LED Area Light delivers even better trespass control. Current's exclusive reflective optical ring design produces superior vertical illuminance and efficiently directs the light without wasteful and unwelcomed light spill into neighboring properties. Due to the extensive variation of parking lot configurations coupled with tightening ordinances,

*Current now offers a full array of shielding to accommodate challenging sites.*

The shielding options available for the **Evolve**<sup>®</sup> Area Light focus on the following applications:

- Left & Right Cutoff
- Front Cutoff
- Backlight Control & B-U-G Improvement



Within each of the shielding families, there are multiple shielding cutoff levels that are categorized in mounting height (MH) increments. Current accommodates cutoff distance from the pole from 1MH to 2.5 MH in 0.5 MH increments. The shields that are listed are for the most common applications. Please contact the manufacturer if your need is not listed.

All shields can be installed easily in the field. The next evolution of the **Evolve**<sup>®</sup> LED Area Light and shielding options will help you meet any parking lot challenge.

## EAL SERIES SHIELDED FIXTURE EXAMPLES\*



Single Module Left/Right Shield



Double Module Left/Right Shield



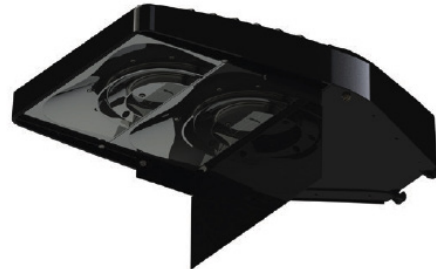
Single Module Front Shield



Double Module Front Shield



Single Module Back Shield



Double Module Back Shield

<b>EALS03</b> <b>1 Module Optical Codes</b>
C4, C3, C2
D4, D3, D2
F4, F3, F2

<b>EALS03</b> <b>2 Module Optical Codes</b>
H4, H3, H2
J4, J3, J2
K4, K3, K2
C5, D5, F5, H5, J5, K5

<b>EALP03</b> <b>2 Module Optical Codes</b>
J5, J4, J3, J2
K5, K4, K3, K2
L5, L4, L3, L2
M5, M4, M3, M2
N5, N4, N3, N2
P5, P4, P3, P2
Q5, Q4, Q3, Q2

\*All shields listed on this page are "BLACK" in color.

## TYPE AUTO SHIELDING

Shield Orientation	Cutoff Distance	Fixture Type	Shield Order Logic
Back	Long	2 Module	ELS-EAL-FBL-BLCK

## TYPE V SHIELDING

Shield Orientation	Cutoff Distance	Fixture Type	Shield Order Logic
Any Side	0.5	2 Module (Symmetric Medium)	ELS-EAL-MS1-BLCK
	1		ELS-EAL-MS2-BLCK
	1.5		ELS-EAL-MS3-BLCK
	2		ELS-EAL-MS4-BLCK
	2.5		ELS-EAL-MS5-BLCK
Any Side	0.5	2 Module (Symmetric Wide)	ELS-EAL-SS1-BLCK
	1		ELS-EAL-SS2-BLCK
	1.5		ELS-EAL-SS3-BLCK
	2		ELS-EAL-SS4-BLCK
	2.5		ELS-EAL-SS5-BLCK

## TYPE IV SHIELDING

Shield Orientation	Cutoff Distance	Fixture Type	Shield Order Logic
Front	1	2 Module	ELS-EAL-FF2-BLCK
	1.5		ELS-EAL-FF3-BLCK
	2		ELS-EAL-FF4-BLCK
	2.5		ELS-EAL-FF5-BLCK
Front	1	1 Module	ELS-EAL-RF2-BLCK
	1.5		ELS-EAL-RF3-BLCK
	2		ELS-EAL-RF4-BLCK
Side	2.5	2 Module	ELS-EAL-RF5-BLCK
	0.5		ELS-EAL-FS1-BLCK
	1		ELS-EAL-FS2-BLCK
	1.5		ELS-EAL-FS3-BLCK
	2		ELS-EAL-FS4-BLCK
Side	2.5	1 Module	ELS-EAL-FS5-BLCK
	0.5		ELS-EAL-RS1-BLCK
	1		ELS-EAL-RS2-BLCK
	1.5		ELS-EAL-RS3-BLCK
	2		ELS-EAL-RS4-BLCK
Back	2.5	2 Module	ELS-EAL-RS5-BLCK
	Short		ELS-EAL-FBN-BLCK
	Long		ELS-EAL-FBL-BLCK
Back	Long	1 Module	ELS-EAL-RBL-BLCK

## TYPE III SHIELDING

Shield Orientation	Cutoff Distance	Fixture Type	Shield Order Logic
Front	1	2 Module	ELS-EAL-WF2-BLCK
	1.5		ELS-EAL-WF3-BLCK
	2		ELS-EAL-WF4-BLCK
	2.5		ELS-EAL-WF5-BLCK
Front	1	1 Module	ELS-EAL-DF2-BLCK
	1.5		ELS-EAL-DF3-BLCK
	2		ELS-EAL-DF4-BLCK
	2.5		ELS-EAL-DF5-BLCK
Side	0.5	2 Module	ELS-EAL-WS1-BLCK
	1		ELS-EAL-WS2-BLCK
	1.5		ELS-EAL-WS3-BLCK
	2		ELS-EAL-WS4-BLCK
Side	2.5	1 Module	ELS-EAL-WS5-BLCK
	0.5		ELS-EAL-DS1-BLCK
	1		ELS-EAL-DS2-BLCK
	1.5		ELS-EAL-DS3-BLCK
Back	2	2 Module	ELS-EAL-DS4-BLCK
	2.5		ELS-EAL-DS5-BLCK
Back	Short	2 Module	ELS-EAL-WBN-BLCK
	Long		ELS-EAL-WBL-BLCK
Back	Long	1 Module	ELS-EAL-DBL-BLCK

## TYPE II SHIELDING

Shield Orientation	Cutoff Distance	Fixture Type	Shield Order Logic
Side	0.5	2 Module	ELS-EAL-NS1-BLCK
	1		ELS-EAL-NS2-BLCK
	1.5		ELS-EAL-NS3-BLCK
	2		ELS-EAL-NS4-BLCK
	2.5		ELS-EAL-NS5-BLCK
Side	0.5	1 Module	ELS-EAL-AS1-BLCK
	1		ELS-EAL-AS2-BLCK
	1.5		ELS-EAL-AS3-BLCK
	2		ELS-EAL-AS4-BLCK
	2.5		ELS-EAL-AS5-BLCK
Back	Short	2 Module	ELS-EAL-NBN-BLCK
	Long		ELS-EAL-NBL-BLCK
Back	Long	1 Module	ELS-EAL-ABL-BLCK