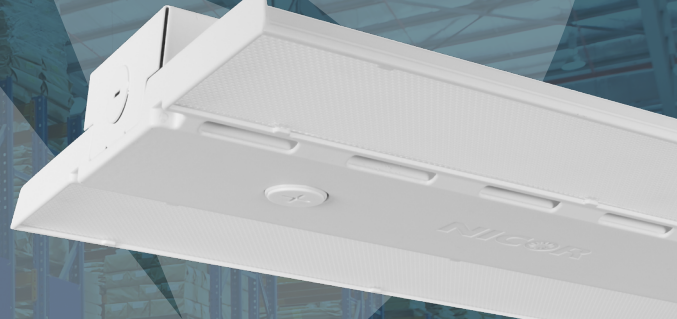


# NICOR<sup>®</sup> HML3

CCT & WATTAGE SELECTABLE



## FEATURES & BENEFITS

### Design & Application

Unparalleled durability that is a perfect choice for demanding environments such as warehouses, gymnasiums, and various industrial or commercial settings.

Crafted from a single-piece, robust cast aluminum with an integrated cooling system that provides exceptional heat dissipation.

Enhanced aesthetic appeal with the polyester powder coat finish that adds an extra layer of protection.

### Installation Versatility

Included V-hook and 3ft chain mounting system facilitate versatile installation, ensuring hassle-free setup.

Enhance fixture protection with the optional wireguard, providing an additional layer of security.

Top-mounted wireway cover for easy wire access and flexibility in routing and concealing wires.

Optional pendant and surface mount kits available for a versatile installation choices to meet specific project requirements.

### Precision Optics

Available options for aisle and wide optics for tailored lighting solutions for a variety of applications.

Designed for precision and offers both standard and customizable options for an optimal performance.

Superior color rendering (CRI >80) to help achieve the desired ambiance and visual accuracy.

### Flexible Control

Integrated NLC (Network Lighting Controls) to provide Bluetooth control via NICOR's NLC App (Android/iOS).

Field selectable color temperatures (3000K-5000K) and wattages (Low/Med/High) to create the perfect lighting ambiance.

Operating within a wide input voltage range (120-277VAC or 277-480VAC) ensures compatibility with various electrical systems.

### High Performance LED technology

Selectable wattage and color temperature offers flexibility to adjust the light to suit different preferences and environments.

Long-lasting LED modules with a reported L70 life of over 60,000 hours, ensuring extended lifespan and minimal maintenance requirements.

Integrated sensor combines occupancy sensing, daylight harvesting, and 0-10V dimming to deliver wireless control via NICOR's NLC App (Android/iOS).

Operates on a Bluetooth Low Energy (BLE) mesh network to provide stable and secure coverage.

### Increased ROI

Lower energy consumption compared to traditional lighting solutions to provide energy savings and decreased overall wattage consumption.

Long lifespan and durable construction reduce the need for frequent replacements, minimizing operating and maintenance costs.

Enables customization of lighting levels, wattage, and color temperatures to optimize energy usage.

Versatile applications across different settings allow for a single product to serve multiple purposes, maximizing its value and return on investment.

### Environmentally Friendly

Energy-efficient LED technology reduces energy consumption, resulting in lower carbon emissions and a smaller environmental footprint.

Elimination of hazardous materials such as mercury found in traditional fluorescent lamps resulting in a safer and eco-friendly lighting option.

Full wireless control via the NLC app allows for scheduling and daylight harvesting to ensure lights are only active when needed to improve energy savings.



**DOWNLOAD THE  
NICOR NLC APP**

