

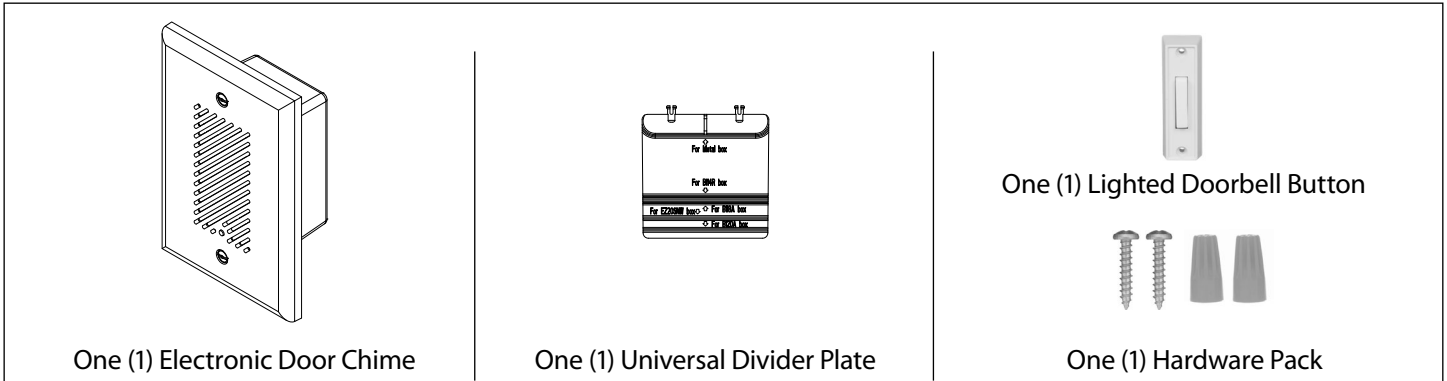


WARNING - RISK OF SHOCK

Attention: The EDC divider must be properly installed before product installation in order to meet UL and NEC requirements. Divider must be no further than .063" (1.6mm) from the back of the box to keep wiring isolated on each side. Failure to properly install the divider can lead to a shock hazard.

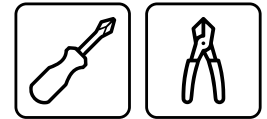
1. This fixture is to be installed by only a qualified electrician.
2. This fixture is to be used at 120V AC/60Hz power supply only.
3. This fixture is designed for use in a circuit protected by a fuse or circuit breaker.
4. Turn off the power supply at the fuse or circuit breaker box before you install this fixture.
5. Turn off the power supply again when you perform maintenance.
6. Double check all connections to be sure they are all tight and correct.
7. Operation environment: to be installed indoors under dry and ventilated environment. It should NOT be installed in damp locations or environment with high temperature. Installation of this fixture should be kept away from other electrical devices.

What's In The Box



Tools Needed

The EDC Chime requires very few tools for installation. A screwdriver and a pair of wire cutters will be required to install the chime.

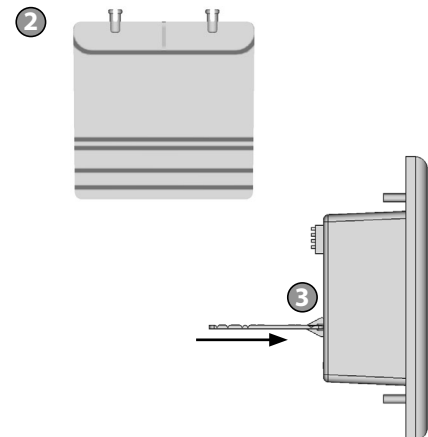


Junction Box

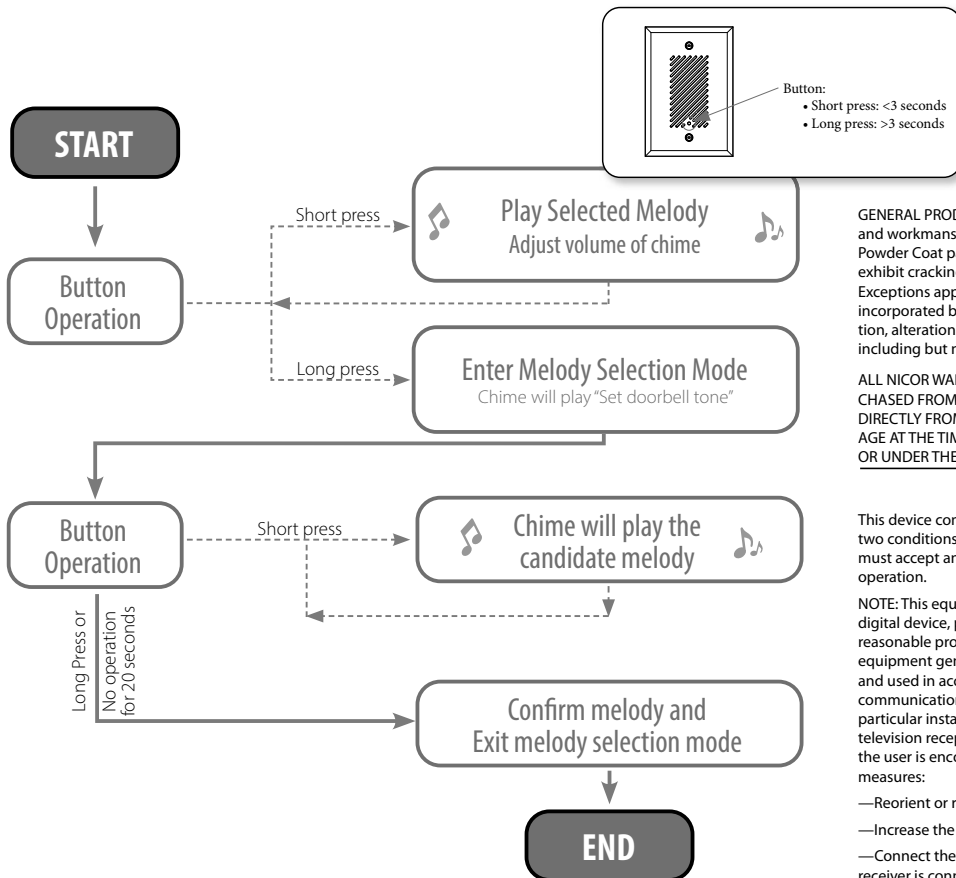
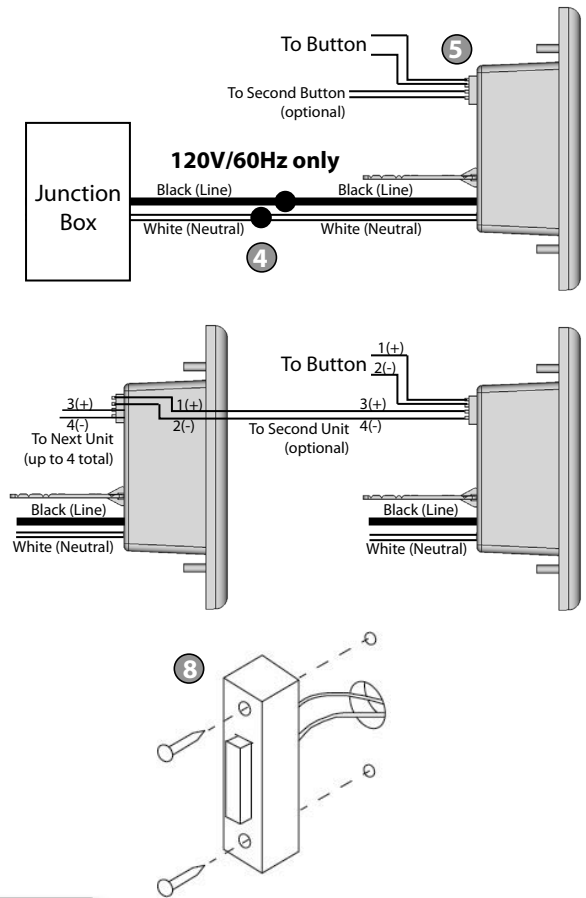
The EDC requires a single gang junction box for installation. It is compatible with most standard single gang boxes. For a complete list of compatible boxes, please see www.nicorlighting.com

Installation Make sure all power is turned off before beginning installation

- 1 Carefully unpack fixture and identify the installation location.
Location must have access to both line voltage wiring for the EDC and low voltage wiring for the button.
- 2 Snap off/cut excess material from the voltage divider to an appropriate length. No further than 1.6mm (0.063 in) from the rear of the j-box.
- 3 Install the divider into the Chime, making sure it is fully engaged.
Note: This is a one-time installation and removal will break the divider.



- 4 Connect line voltage wiring (120VAC, 18ga or greater) per the diagram.
Note: Ground wire is not required. Cap off ground wire in junction box.
- 5 Connect low voltage bell wires (22ga-18ga solid) into ports 1(+) and 2(-). A second button (sold separately) can be installed into ports 3(+) and 4(-) for control from a second door.
- 6 For daisy chain: Run bell wire (18-22ga) from ports 3(+) and 4(-) of the first unit into ports 1(+) and 2(-) of the second unit. Continue this manner of connection for each additional unit to be daisy chained, up to 4 units total. (Wiring must not exceed the following: 70' from doorbell to first unit. 400' total length)
- 7 Install into junction box with the provided screws. Ensure wiring is not pinched or interfering with the divider.
- 8 Attach doorbell button to chime wiring (18ga or 22ga) using screw terminals and mount doorbell button to surface with included screws.
- 9 Apply power. The button should illuminate. Test functionality of the chime by pressing button.
- 10 To modify ring tone or volume, follow the instructions below.
Default settings: Tone - Ding Dong, Volume - 60%
In daisy-chain applications, each unit must be adjusted individually.



GENERAL PRODUCT WARRANTY. Each NICOR product will be free from defect in materials and workmanship for a period of one (1) year from the date of delivery to the end-user. Powder Coat paint finish on products, other than natural aluminum or brass, will not exhibit cracking, peeling, excessive fading, or corrosion during the warranty period. Exceptions apply as defined in each NICOR product's specification sheets, which are incorporated by reference herein. Warranty does not cover improper installation, operation, alterations, power surges, overheating due to external conditions, or acts of nature including but not limited to lightning strikes.

ALL NICOR WARRANTIES APPLY ONLY TO NICOR PRODUCTS THAT HAVE BEEN PURCHASED FROM AN AUTHORIZED NICOR DISTRIBUTOR; WHO PURCHASED THE PRODUCT DIRECTLY FROM NICOR; THE PRODUCT WAS NEW AND IN AN UNOPENED NICOR PACKAGE AT THE TIME OF INSTALLATION; AND WAS INSTALLED BY A LICENSED ELECTRICIAN OR UNDER THE SUPERVISION OF A LICENSED ELECTRICIAN.

This device complies with part 15 of the FCC Rules. Operation is subject to the following two conditions: (1) This device may not cause harmful interference, and (2) this device must accept any interference received, including interference that may cause undesired operation.

NOTE: This equipment has been tested and found to comply with the limits for a Class B digital device, pursuant to part 15 of the FCC Rules. These limits are designed to provide reasonable protection against harmful interference in a residential installation. This equipment generates, uses and can radiate radio frequency energy and, if not installed and used in accordance with the instructions, may cause harmful interference to radio or television reception, which can be determined by turning the equipment off and on, the user is encouraged to try to correct the interference by one or more of the following measures:

- Reorient or relocate the receiving antenna.
- Increase the separation between the equipment and receiver.
- Connect the equipment into an outlet on a circuit different from that to which the receiver is connected.
- Consult the dealer or an experienced radio/TV technician for help.