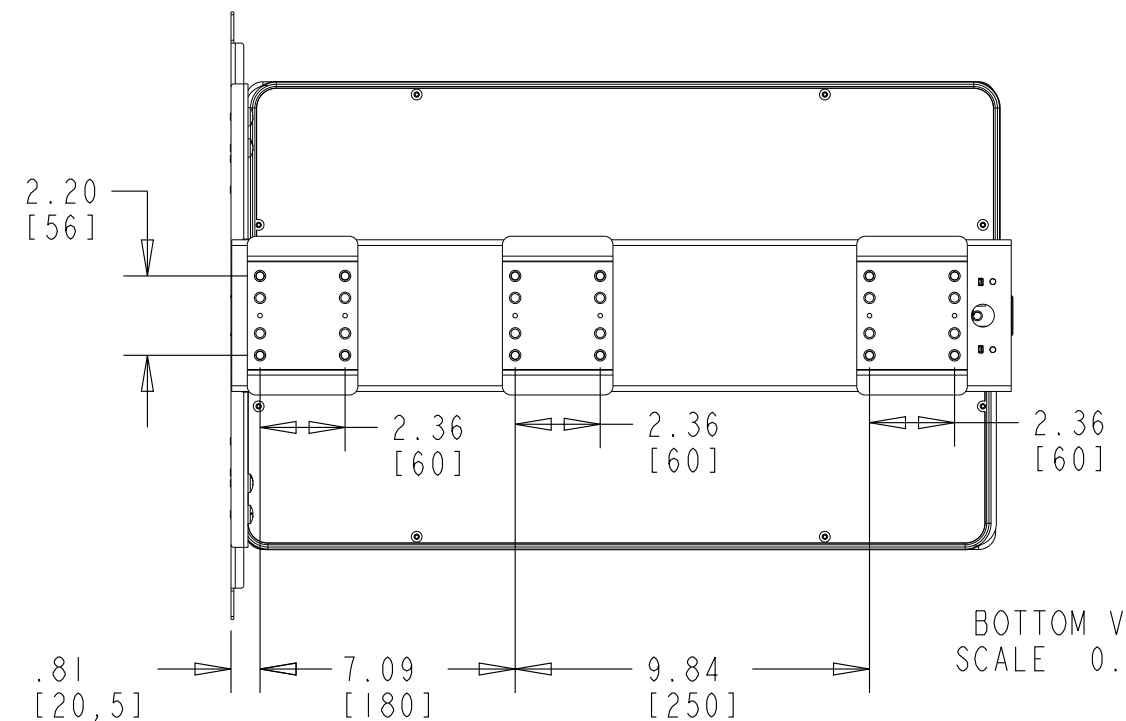


TOP VIEW
SCALE 0.188

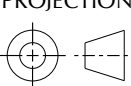


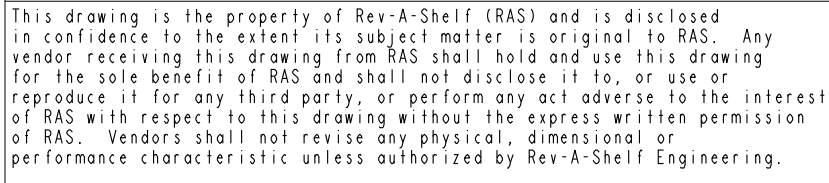
BOTTOM VIEW
SCALE 0.188

CUSTOMER DRAWING

This drawing is the property of Rev-A-Shelf (RAS) and is disclosed in confidence to the extent its subject matter is original to RAS. Any vendor receiving this drawing from RAS shall hold and use this drawing for the sole benefit of RAS and shall not disclose it to, or use or reproduce it for any third party, or perform any act adverse to the interest of RAS with respect to this drawing without the express written permission of RAS. Vendors shall not revise any physical, dimensional or performance characteristic unless authorized by Rev-A-Shelf Engineering.


REV.	DATE	BY	DESCRIPTION OF CHANGE

INCH [MM]	AMERICAN PROJECTION 	DRAWN	BY	DATE	REV-A-SHELF®, INC.	
			KRR	4-9-18	SIZE B	SC SOLID BOTTOM PULLOUT PANTRY
TOLERANCES MAT. DEC. (WOOD) .XX ±.03 [.8mm] (OTHER) .XX ±.02 [.5mm] (ALL) .XXX ±.005 [.13 mm] FRACTIONS ±1/32 [.8 mm]		ANGLES ±1/2°	MATERIAL		DRAWING NO.	SCALE
			FINISH		PART NO.	SHEET OF
					5373-13-XX	1 2



MIN CABINET OPENING				
	FACE FRAME	FRAMELESS	INSET FACE FRAME	INSET FRAMELESS
WIDTH	14.79 [375,7]	14.79 [375,7]	14.79 [375,7]	14.79 [375,7]
DEPTH	21.75 [552,5]	21.75 [552,5]	22.50 [571,5]	22.50 [571,5]
HEIGHT	73.63 [1870]	73.63 [1870]	73.63 [1870]	73.63 [1870]

CUSTOMER DRAWING

				INCH [MM]	AMERICAN PROJECTION 	DRAWN	BY	DATE	REV-A-SHELF [®] , INC. SC SOLID BOTTOM PULLOUT PANTRY	
				TOLERANCES MAT. DEC. (WOOD) .XX ±.03 [.8mm] (OTHER) .XX ±.02 [.5mm] (ALL) .XXX ±.005 [.13 mm] FRACTIONS ±1/32 [.8 mm]		ANGLES ±1/2°	MATERIAL		DRAWING NO.	SCALE
							FINISH		PART NO.	SHEET OF
REV.	DATE	BY	DESCRIPTION OF CHANGE						5373-13-XX	2 OF 2