

Traffic Signal

Cleaning/Maintenance Guide

Maintenance and Inspection Schedule

Every six (6) months or more frequently as required by the facilities equipment cleaning schedules, inspect fixtures for physical damage (including cracks, dents, etc.), failed LEDs, solid connections, lens clouding and dirt and/or dust accumulation on the fixture. If dirt, dust or debris is present, please follow the below cleaning instructions.

If the fixture is damaged, please contact your reseller to purchase a new one.

Cleaning Instructions and Cautions

DO NOT CLEAN INTERNAL SYSTEM

Fixtures are not designed to be disassembled and do not require cleaning of internal parts.

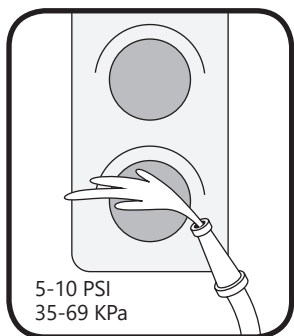
For safe operation, and to maximize the longevity of the fixture; ensure that the light module and driver are clean and free of dirt, dust, oil, or any other debris by cleaning on a regular basis. Do not apply any kind of film on the lens or otherwise cover the driver or light engine in any way.

PERIODIC CLEANING

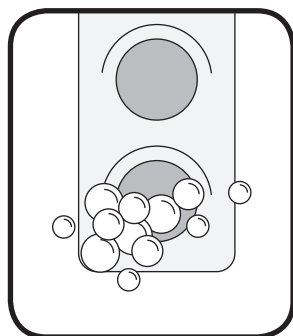
Should the fixture require cleaning, use only non-abrasive, neutral (pH 6-8) cleaner containing no chlorinated or aromatic hydrocarbons.

⚠ CAUTION
RISK OF BURN. Allow fixture to cool before handling.

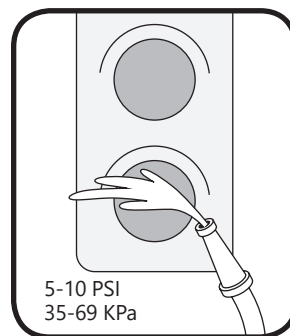
⚠ WARNING
RISK OF ELECTRICAL SHOCK. Turn power OFF before inspection, installation or removal.



1 Pre-rinse the fixtures. A low-pressure hose may be used.



2 The lens of the fixtures may be sanitized using a cleaning solution as described above.



3 Rinse clean with a low-pressure hose.



4 Wipe dry with a clean non-abrasive cloth.