
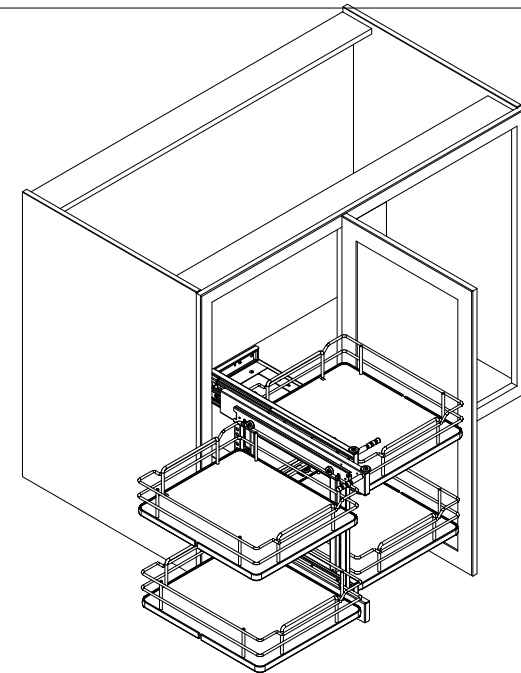


This drawing is the property of Rev-A-Shelf (RAS) and is disclosed in confidence to the extent its subject matter is original to RAS. Any vendor receiving this drawing from RAS shall hold and use this drawing for the sole benefit of RAS and shall not disclose it to, or use or reproduce it for any third party, or perform any act adverse to the interest of RAS with respect to this drawing without the express written permission of RAS. Vendors shall not revise any physical, dimensional or performance characteristic unless authorized by Rev-A-Shelf Engineering.

REV.	DATE	BY	DESCRIPTION OF CHANGE

	AMERICAN PROJECTION			BY	DATE	REV-A-SHELF® INC.	
INCH [MM]		DRAWN			25.04.22	SIZE B	Blind Corner Optimizer With Soft-Closing
TOLERANCES				MATERIAL		DRAWING NO.	SCALE
MAT. (WOOD) XX (OTHER) XX	DEC ±.03 [.8mm] ±.02 [1.5mm] ±.005 [±.13 mm] FRACTIONS ± 1/32 [1.8 mm]	ANGLES ± 1/2°		FINISH		PART NO. 53PSP-18SC-xx	SHEET OF 1 2



				INCH [MM]		DRAWN	25.04.22	INNOVATION, INC.	
								SIZE B	Blind Corner Optimizer With Soft-Closing
				TOLERANCES		MATERIAL		DRAWING NO.	
				MAT. (WOOD) .XX (OTHER) .XX (ALL) .XXX FRACTIONS	DEC. ± .03 [.8mm] ± .02 [.5mm] ± .005 [.13 mm] ± 1/32 [1.8 mm]	ANGLES ± 1/2°	FINISH	PART NO. 53PSP-18SC-xx	SCALE 1:17 SHEET OF 2 2
REV.	DATE	BY	DESCRIPTION OF CHANGE						