

HML2

LED High-Performance High Bay

Product Description

NICOR introduces the newest high bay product line: the patent pending, ultra-efficient, high performance HML2 high bay. With only a 12.6"x23" footprint its compact design offers an impressive light output with simple, single-person installation. The DLC 5.1 Premium certified fixture offers selectable wattage (320/270/220W), 3 available CCT's (3500, 4000, 5000, 5700K), sensor, and aisle distribution options. It's durable single-piece cast aluminum design is perfect for rugged applications like warehouses, gymnasiums, and other industrial or commercial spaces.

Construction

- Fully cast aluminum body with integrated cooling features
- Top mounted wireway cover for easy wire access
- Polyester powder coat finish

Optical System

- Standard diffused lens
- Optional aisle lens (45° x 100°) available
- Optional wide lens (105° x 105°) available
- Available CCTs of 3500K, 4000K, 5000K and 5700K with >80 CRI

Electrical

- Selectable power levels: 320/270/220W
- Operating temperature rating of -4°F to 131°F (-20°C to 55°C)
- Input voltage of 120-277V, 277-480V input option available
- Dimming: 0-10V standard

Controls

- Pre-installed 3.5mm sensor socket
- Field installable multifunction MW or PIR sensor available
- Standard full-range dimming with compatible 0-10VDC dimmers
- 12VDC output provides power to off-board sensors or controls

NLC (Network Lighting Controls)

- Bluetooth Low Energy (BLE) mesh network providing Luminaire Level Lighting Control
- Field installable BLE PIR/Daylight sensor (NLC SPEJ1WH-LHW) available
- Configurable with the NICOR NLC app available on iOS and Android devices
- Provides full dimming control with occupancy and daylight harvesting functions

Mounting and Installation

- V-hook and 3' chain mounting system included
- Wireguard option available for increased fixture protection
- Pendant mount and surface mount kits available
- For installations where power surge may be possible, NICOR recommends installing additional surge protection at the fixture or electrical distribution panel

Listings

- cULus1598 Listed for damp locations
- ASHRAE 90.1 compliance when specified with sensor option
- RoHS Compliant
- Meets FCC Part 15, Subpart B, Class A standards for conducted and radiated emissions
- TM-21 Reported L70(10k) life >60,000 hours
- LM-79, LM-80 testing performed in accordance with IESNA standards
- DLC Premium and Standard Listing depending on optic distribution option
- UL impact test rated IK08/5 joules

Warranty

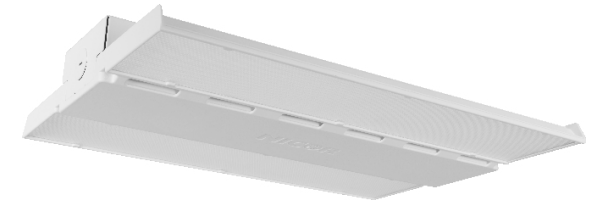
- 5-year limited system warranty standard
- Warranty does not cover product failure due to an overvoltage event (power surge)

Project

Catalog

Type

Date



HML2
320W/270W/220W
3500, 4000, 5000, 5700K
LED High-Performance High Bay



NICOR®

HML2

LED High-Performance High Bay

Ordering Information									Example: HML2320WSU50A
Series	Version	Wattage	Input Voltage	CCT	Distribution	Sensor Socket	Emergency	Wiring Options	
HML	2	320WS (320/270/220W)	U (120-277V)	35 (3500K) ⁴	A (general - 90°x90°)	S (with socket)	Blank (No)	Blank (No)	
			H (277-480V)	40 (4000K)	B (wide - 105°x105°)		E40 (40W) ⁵	C (Cord - 3-wire, 6ft) ¹	
				50 (5000K)	C (aisle - 45°x100°)			C4 (Cord - 4-wire, 6ft) ²	
				57 (5700K) ⁴				F (Flex Conduit - 6ft) ³	

Specifications and dimensions subject to change without notice.

1) C3 Cord is 18/3 wire, 6' long, black. Other lengths available upon request

2) C4 cord is 18/4 wire, 6' long, black, for use with Emergency enabled fixtures. Other lengths available upon request

3) Flexible metal conduit is 6' long, 18/3 wire configuration. Other lengths available upon request

4) 3500K & 5700K CCT available as special order

5) Emergency not available on HV fixtures

NICOR Lighting Controls (NLC)

HML2 can be converted to use with NICOR Lighting Controls (NLC) by installing the NLC sensor. See www.nicorlighting/network-lighting-controls for more information and NLC Component Data Sheets.

Motion Sensors

Passive Infrared Motion Sensor	H12VSENSORPIR
Microwave Motion Sensor	H12VSENSORMW
Remote Control for Sensors	H12VREMOTE
NICOR Lighting Controls PIR Sensor	NLCSPEJ1WH-LHW



Wireguard Accessories

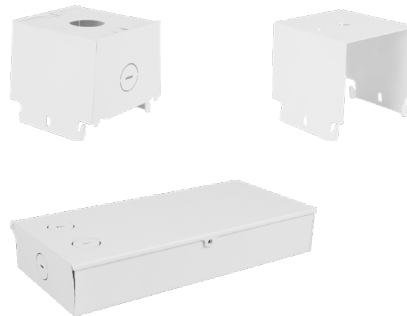
Wireguard for HML2	HML2WG
--------------------	--------



Mounting Accessory Kits

Aircraft Cable Kit (10ft)	ACMK110
Pendant Kit	HML1100-150PEND
Surface Mount Kit	HML100-150SURFACE

Pendant and surface mount kits compatible to all HML models



Emergency Battery Accessories

40W Battery Pack (120-347V)	HML1EM40WRVWH
-----------------------------	---------------

For installation in the field by the end user

End user is responsible for proper selection of battery pack to meet NFPA requirements

Emergency not available on HV fixtures

Plug Accessories

15A 125V Straight Bladed Plug	515P
15A 125V Twist Lock Plug	L515P
15A 250V Twist Lock Plug	L615P
15A 277V Twist Lock Plug	L715P
20A 277V Twist Lock Plug	L720P
20A 347V Twist Lock Plug	L2320P
20A 480V Twist Lock Plug	L820P

Plugs not available for C4 (4-wire cord) or F (flex conduit) options

HML2

LED High-Performance High Bay

Performance Data

Standard Distribution

Model Number	Lumens	Watts	Lumens/Watt
HML2320U40A	31,418	221	142.2
	38,242	269	
	45,350	319	
HML2320U50A	31,582	221	142.9
	38,441	269	
	45,587	319	

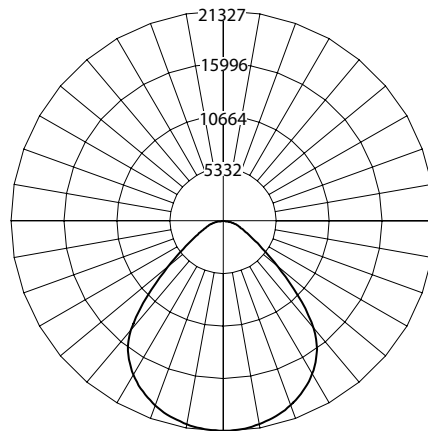
Photometric Data

320W 3500K

Input Voltage (VAC)	120-277
System Level Power (W)	318
Delivered Lumens (Lm)	44304
System Efficacy (Lm/W)	139.3
Correlated Color Temp (K)	3422
Color Rendering Index (CRI)	82
Beam Angle (0)	89.3
Beam Angle (90)	90.6
Spacing Criteria (0)	1.26
Spacing Criteria (90)	1.26

CCT Data Multiplier

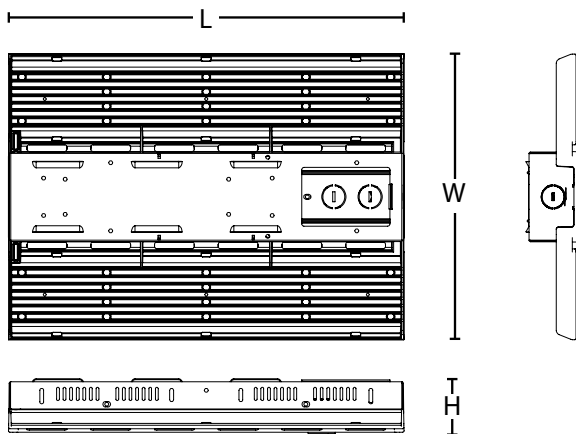
4000K	1.024
5000K	1.034



Cone of Light Tabulation

Mounted height (Feet)	Footcandles Beam Center	Diameter (Feet)
23	60.1	45.3
25	50.8	49.2
28	40.4	55.1
32	30.7	63.0

Dimensions



Product Measurements

	320/270/220W
Length:	23.0 in. (585mm)
Width:	12.6 in. (320mm)
Height:	1.9 in. (48.5mm)

HML2

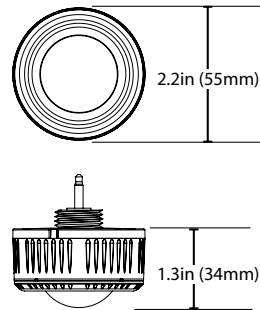
LED High-Performance High Bay

Sensors and Dimmers

H12V PIR Low Voltage Motion Sensor

See the individual spec sheet for further information

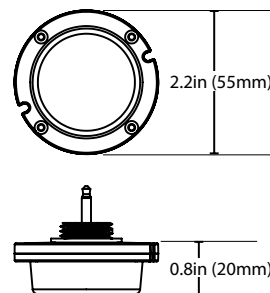
- Field installed 12VDC sensor
- Infrared motion detector with built in daylight sensor
- Remote control programmable
- Highly configurable:
 - Detection area
 - Stand-by period
 - Hold time
 - Stand-by dimming
 - Dimming level
 - Daylight harvesting threshold
- Max mounting height: 40ft (12m)
- IP65 Rated



Microwave Low Voltage Motion Sensor

See the individual spec sheet for further information

- Field installed 12VDC sensor
- Microwave motion detector with built in daylight sensor
- Remote control programmable
- Highly configurable:
 - Detection area
 - Stand-by period
 - Hold time
 - Stand-by dimming
 - Dimming level
 - Daylight harvesting threshold
- Max mounting height: 40ft (12m)
- IP65 Rated



Remote Control for H12V Sensors

See the individual spec sheet for further information

- Allows programming of MW or PIR sensors
- Allows adjustment of:
 - Brightness
 - Stand-by dimming level
 - Hold time
 - Stand-by time
 - Sensor Sensitivity
 - Stand-by dimming
 - Daylight harvesting threshold



NLC Bluetooth PIR/Daylight Sensor

See the individual spec sheet for further information

- Field installed 12VDC sensor
- Infrared motion detector with built in daylight sensor
- Commissioned with NLC App
- Highly configurable:
 - Occupancy/Vacancy Detection
 - Full Range Dimming (0-10V)
 - Daylight Harvesting
 - Scene Control
 - High-End Trim
 - Full Networking
- Max mounting height: 40ft (12m)
- IP65 Rated



Recommended Dimmers*

Lutron NTSTV
Lutron DVSTV
Cooper SF10P
Legrand RH4FBL3PW

*Not a complete list. Check compatibility before installation.

12VDC Output

There is an additional 12VDC output on the driver. This output can be used to provide power to external low voltage sensors or controls. Do not use the 12VDC output if a sensor is installed in the socket.