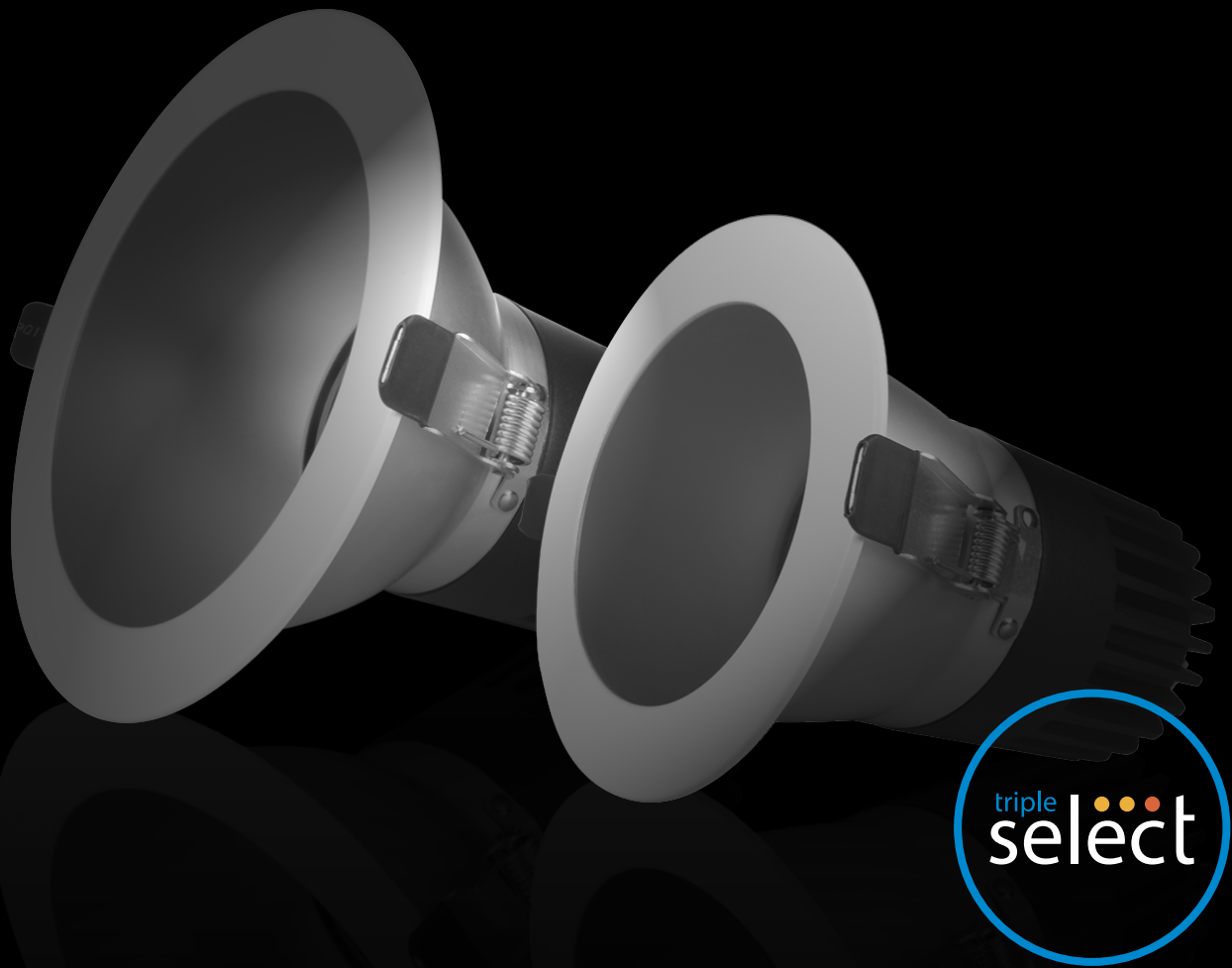


NICOR[®]



CDG **MODULAR LED** DOWNLIGHT

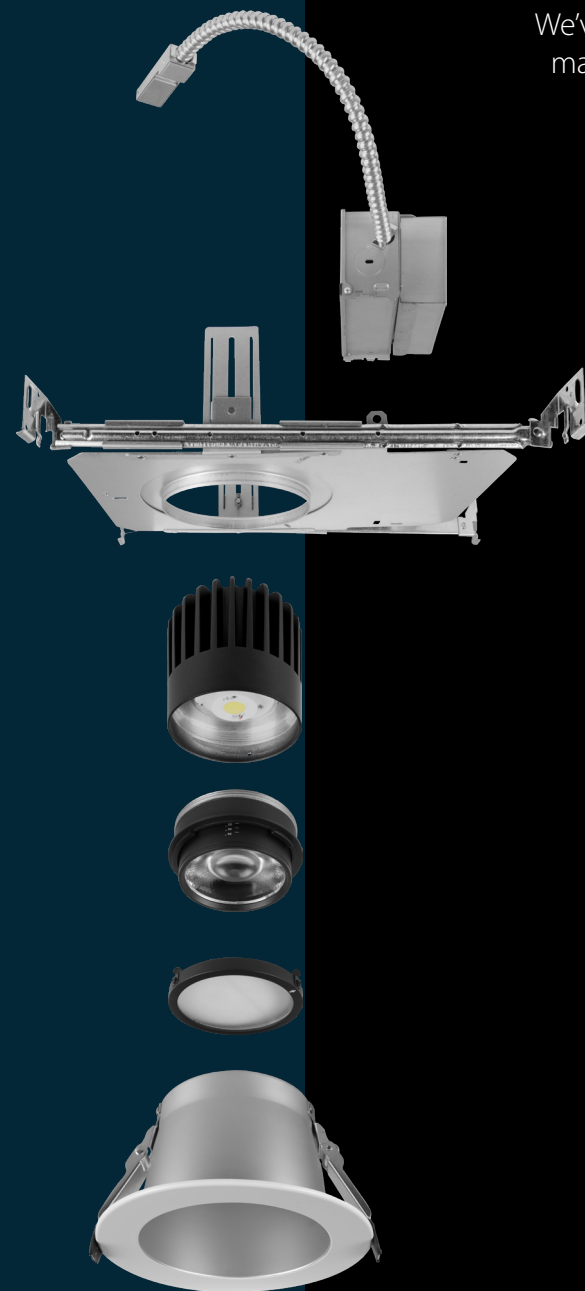


Meet the new **CDG** Modular LED Downlight from **NICOR**

The CDG Commercial LED Downlight System is a versatile lighting solution that combines modular design features with the latest in LED and wireless control technology. With selectable wattage and color temperature (cct) options, the CDG presents an all-in-one system suitable for any application.

Specification **Meets** Simplicity

We've simplified the configuration process through the use of core components, making it easier to build your preferred CDG system with fewer steps required.



1 One **Frame**

Included collar adapters allow you to use the same frame for both 4" and 6" systems.

One **Driver**

Integrated Selectable wattage and color temperature settings allow for customized lighting.

2 Two **Optics**

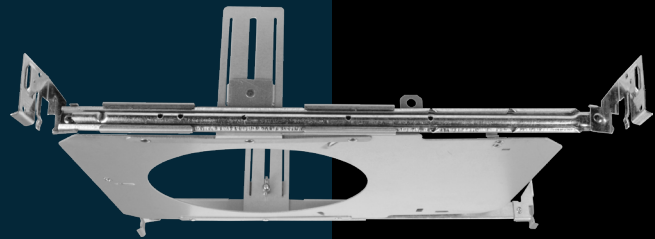
Each optic features a Selectable range of distributions with a simple turn of the lens.

3 Three **Reflectors**

Choose between clear specular, haze, or white reflectors in both 4" and 6" options.

+ Lot's of Extras:

- **Wall Wash Lens** attaches to the optic for refined directional lighting.
- **Butterfly Bracket** provides additional mounting options.
- **Emergency Battery Backup** for added safety and security.
- **NLC Controls** for true wireless control via the NICOR NLC App (Available in Android and iOS).

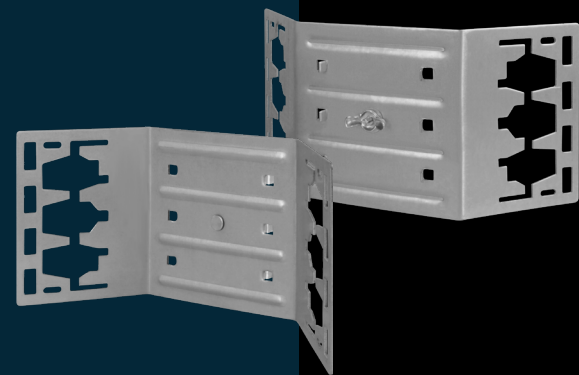


THE **CDG FRAME**

For use in new construction applications, the galvanized CDG Frame is a practical solution, complete with T-Grid compatible swivel feet and interchangeable frame collars to accommodate 4" and 6" reflectors. Each hangar bar extends out to 24.75" and adjusts up to 2" vertically for perfect placement.

THE **CDG DRIVER**

The remote driver with attached junction box features the latest in LED innovation with 3 selectable wattage settings and 5 selectable color temperature settings to produce up to 3,800 lumens at 94 CRI and R9 values of 60 for unmatched light quality. Your reds will be brighter, and your blues will be truer for incredible color rendering. The dual-voltage CDG Driver operates at 120-277 volts and accommodates 0-10V full-range dimming. A 12VDC output wire allows easy setup with NICOR's NLC Low-Voltage PIR/Daylight Sensor for 360° coverage and Bluetooth wireless control via the NICOR NLC App available on Android and iOS marketplaces. The driver and junction box combo can attach directly to the CDG Frame for new construction applications, or mounted to the nearest joist/stud for remodel installations.

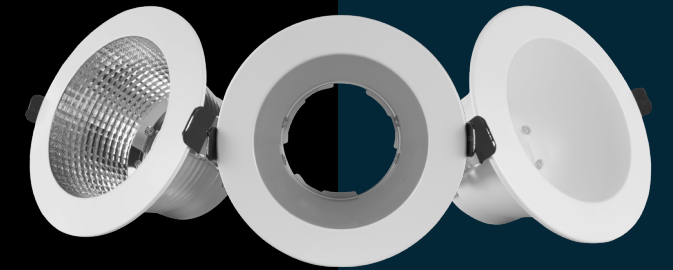


THE **BUTTERFLY BRACKET**

The optional butterfly brackets simply attach to the CDG Frame to provide additional installation functionality. Pair them with c-channel hanger bars (17208), universal c-channel hanger bars (ARCHBKIT), straight bars, conduit, and other mounting accessories for perfect placement. Butterfly brackets are common and often required in commercial development.

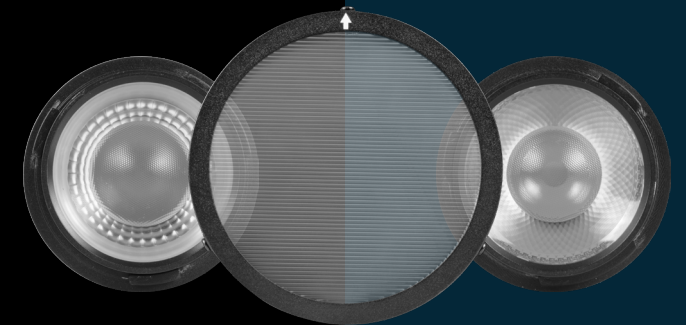
THE **CDG REFLECTOR TRIMS**

The unique reflector design allows the CDG system to retro-fit as needed, bypassing the new construction frame entirely. Each reflector trim includes preset remodel clips to hold the system securely in place. Choose between clear specular, haze, and white finishes available in both 4" and 6" models. Each features a matte white flange for a perfect aesthetic in any room.



THE **WALL WASH LENS**

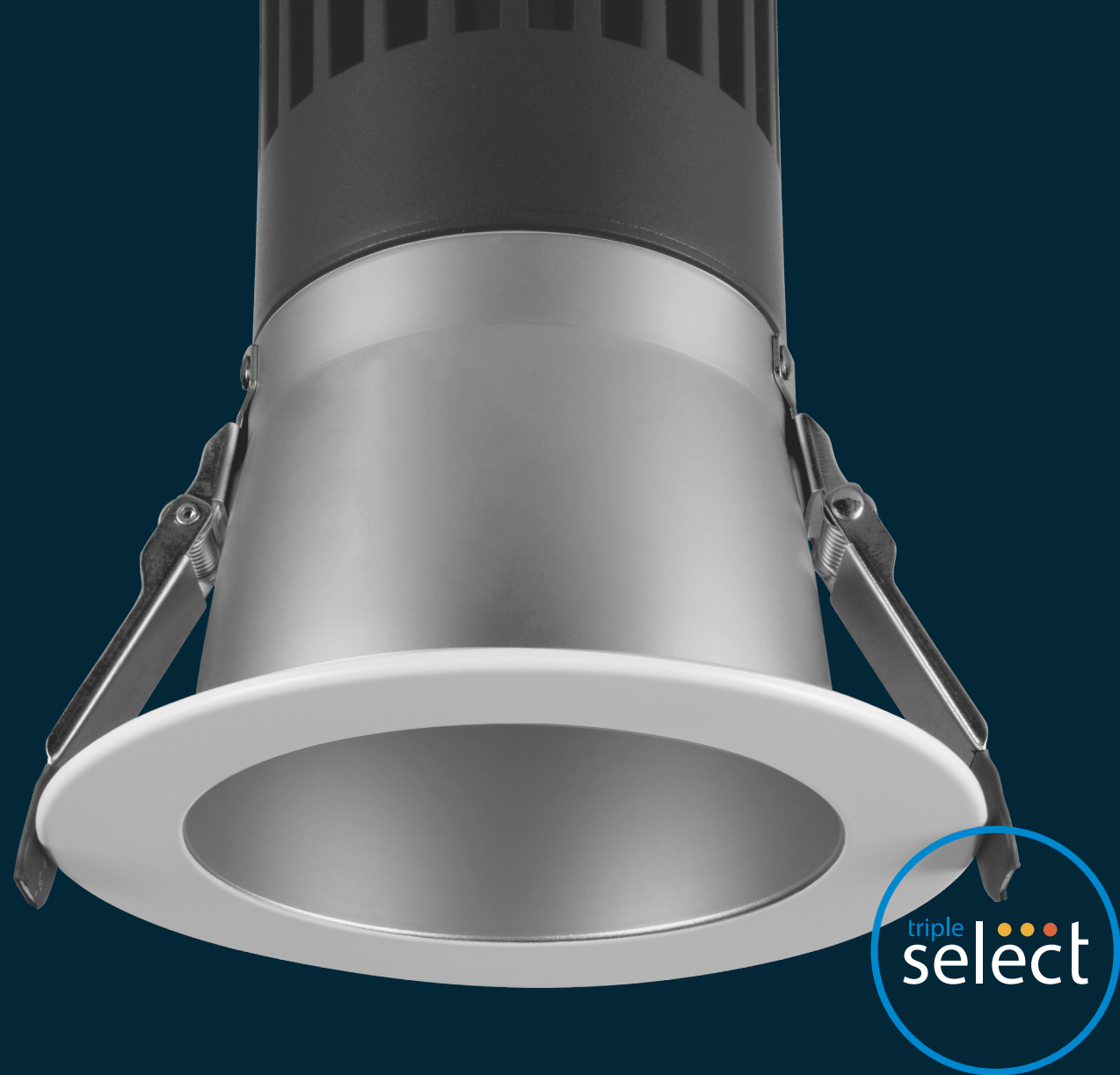
For perfect directional lighting, the wall wash lens cap can attach to either optic (*Medium or Medium-Narrow*). The optical design allows you to get the perfect beam angle to highlight artwork and other features without replacing the reflector trim entirely. Simply snap on the wall wash lens and rotate it to your desired placement. It couldn't be easier! For best results, we recommend using it with the Medium-Narrow optic for a more refined light distribution.



THE **CDG OPTICS**

The CDG offers two field-adjustable and interchangeable precision optics to suit your application needs. The Medium optic provides 36° to 60° coverage, and the Medium-Narrow optic provides 22°-36° coverage for a more focused light distribution. Adjust the optics with a twist, similar to a high-end camera lens. The CDG optic attaches directly to the Reflector Trim with a simple turn to lock it in place.





Select the Perfect Light

The CDG downlight system is a highly adaptable lighting solution offering three selectable options: wattage, color temperature, and optical distribution. This flexibility makes the CDG ideal for various settings, from residential to commercial, architectural, and designer applications.



LOW
MED
HIGH

Selectable Wattage

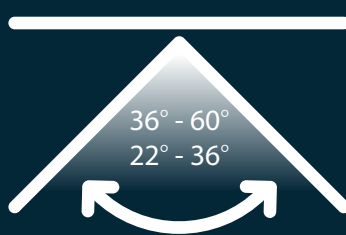
12W / 25W / 38W



2700K
3000K
3500K
4000K
5000K

Selectable CCT

27K / 30K / 35K / 40K / 50K



Selectable Beam Angle

22° to 36° / 36° to 60°



NLC (Network Lighting Control)

The CDG can be configured for zone control or LLC configurations by attaching the NLCSPCW1WH Wireless Low-Voltage PIR/Daylight sensor with the NLCSPCMOUNT1 Recessed Ceiling Mount. Visit nicorlighting.com for more information.



Download on the
App Store



GET IT ON
Google Play



NICOR Lighting
2200 Midtown Pl. NE
Albuquerque, NM 87107 USA

T 800.821.6283

F 800.892.8393

www.nicorlighting.com

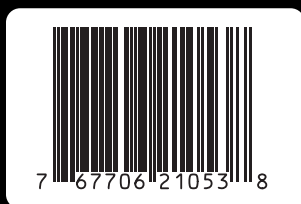
Warehouse Locations:

Albuquerque, NM

Buford, GA

Detroit, MI

Roseville, CA



LIT-CDG-BR-10PK

20231122

© 2023 NICOR® • ALL RIGHTS RESERVED



NICOR CDG Modular LED Downlight