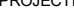
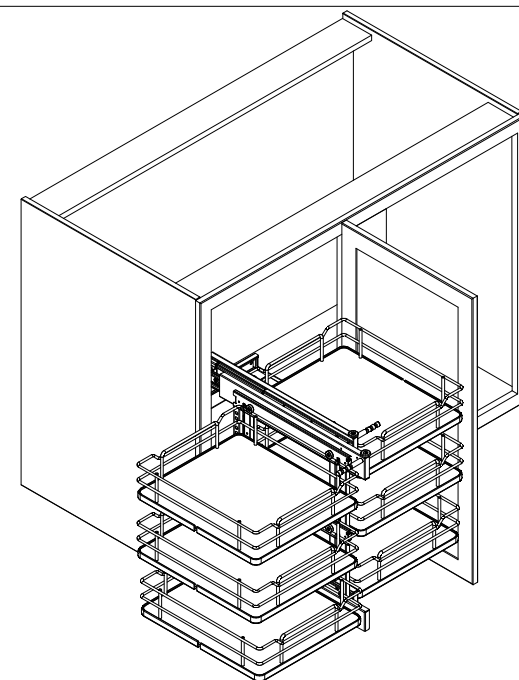



This drawing is the property of Rev-A-Shelf (RAS) and is disclosed in confidence to the extent its subject matter is original to RAS. Any vendor receiving this drawing from RAS shall hold and use this drawing for the sole benefit of RAS and shall not disclose it to, or use or reproduce it for any third party, or perform any act adverse to the interest of RAS with respect to this drawing without the express written permission of RAS. Vendors shall not revise any physical, dimensional or performance characteristic unless authorized by Rev-A-Shelf Engineering.

REV.	DATE	BY	DESCRIPTION OF CHANGE

	AMERICAN PROJECTION		BY	DATE	REV-A-SHELF®, INC.	
INCH [MM]		DRAWN	25.04.22	SIZE	Blind Corner Optimizer With Soft-Closing	
				B		
TOLERANCES		MATERIAL		DRAWING NO.	SCALE	
MAT. (WOOD) .XX	DEC. ±.03 [.8mm]	ANGLES ±1/2			1:10	
(OTHER) .XX	±.02 [.5mm]			FINISH	SHEET OF	
(ALL) .XXX	±.005 [.13 mm]			53PSP3-18SC-xx	1 2	
FRACTIONS	± 1/32 [.8 mm]					

CUSTOMER DRAWING



				INCH [MM]	PROJECTION 	DRAWN	25.04.22	INCH [MM] 1:1	
				TOLERANCES				SIZE B	Blind Corner Optimizer With Soft-Closing
				MAT. (WOOD) XX (OTHER) XX (ALL) XXX FRACTIONS	DEC. ± .03 [.8mm] ± .02 [.5mm] ± .05 [1.3 mm] ± 1/32 [.8 mm]	ANGLES ± 1/2	MATERIAL		DRAWING NO.
						FINISH			SCALE 1:17
REV.	DATE	BY	DESCRIPTION OF CHANGE					PART NO.	SHEET OF
								53PSP3-18SC-xx	2 2