



**DYNACRAFT®**

## **OWNER'S MANUAL**

# **24V GOLF CART**

---

THIS MANUAL CONTAINS IMPORTANT SAFETY, PERFORMANCE AND MAINTENANCE INFORMATION. READ THE MANUAL BEFORE TAKING YOUR FIRST RIDE OR ALLOWING YOUR CHILD TO RIDE YOUR NEW ELECTRIC RIDE-ON TOY. KEEP THE MANUAL HANDY FOR FUTURE REFERENCE.



**DO NOT RETURN THIS ITEM TO THE STORE**  
CONTACT DYNACRAFT CUSTOMER SERVICE FOR ASSISTANCE

**[dynacraftwheels.com/contact](http://dynacraftwheels.com/contact)**

or 1-800-551-0032



---

**FOR AGES 3+**

**MAXIMUM WEIGHT: TOTAL 130lb (59kg), 65lb (29.5kg) per seat**

**NOTE:** Illustrations in this Manual are for reference purposes only and may not reflect the exact appearance of the actual product. Specifications are subject to change without notice.

# TABLE OF CONTENTS

---

<b>A</b>	Introduction, Safety and Warnings . . . . .	2
<b>B</b>	Before You Begin Assembly . . . . .	6
<b>C</b>	Parts Diagram . . . . .	7
<b>D</b>	Assembly . . . . .	9
<b>E</b>	How to Use Your Ride-On Toy . . . . .	25
<b>F</b>	Detailed Maintenance and Repair . . . . .	30
<b>G</b>	Troubleshooting Guide . . . . .	36
<b>H</b>	Limited Warranty . . . . .	39

# SPECIFICATIONS

---

SUITABLE AGE . . . . .	3+
CAPACITY. . . . .	Up to 130 lb (59 kg)
MAX SPEED. . . . .	Low 2.5 MPH/High 5.0 MPH
CHARGER / INPUT. . . . .	AC120V/60HZ
OUTPUT. . . . .	DC 24V/1A
CHARGING . . . . .	12-18 Hours
BATTERY . . . . .	24V 7AH, 1x Battery
SIZE. . . . .	132 x 68 x 105 cm
AVERAGE BATTERY LIFE . . . . .	300 Charges

**This is an estimate only, not a guarantee. Actual battery performance will vary based on many factors, including but not limited to maintenance, charging habits, operation of product, and temperature.**

# INTRODUCTION, SAFETY AND WARNINGS

A

**ABOUT THIS MANUAL:** This Manual was written to help you and your child get the most performance, comfort, enjoyment and safety when riding your new electric ride-on toy. It is important for you to understand your new electric ride-on toy. By reading this manual before you let your child go out on his/her first ride, you will know how to get the most from your new electric ride-on toy. It is also important that you or your child's first ride be in a controlled environment, away from cars, obstacles, and other riders.

**⚠ GENERAL WARNING:** Riding an electric ride-on toy can be a dangerous activity, even under the best of circumstances. Proper maintenance of your new ride-on toy is your responsibility and helps reduce the risk of injury. Certain conditions may cause components to fail without fault of the manufacturer. The ride-on toy can and is intended to move, and it is therefore possible to lose control, fall off and/or get into dangerous situations that no amount of care, instruction or expertise can eliminate. If such a thing does occur, your child can become seriously injured or die, even when using safety equipment and other safety precautions.

**⚠ WARNING:** To reduce risk of injury, adult supervision is required. Never use in roadways, near motor vehicles, on or near steep inclines or steps, swimming pools or other bodies of water; always wear shoes, and never allow more than two (2) riders.

**⚠ WARNING:** CHOKING HAZARD—Small parts not suitable for children under 3 years old.

**⚠ WARNING:** This toy is unsuitable for children under 3 years due to its maximum speed.

**⚠ WARNING:** This toy should be used with caution since skill is required to avoid falls or collisions causing injury to the user or third parties. Parents must make sure that children can operate the ride-on toy safely before letting them ride it.

**⚠ WARNING:** Do not ride in rain, snow, or mud, or store the ride-on toy outside without covering. Water can damage components, including the motor, electrical system, and battery.

**⚠ WARNING:** This ride-on toy is not an off-road vehicle and is intended to be ridden on smooth, level ground. Do not ride in loose dirt, sand, or gravel, which could damage moving parts, the motor, or the electrical system.

**NOTE:** Store the ride-on toy indoors or in a covered location when not in use. Avoid long term exposure to rain, excessive sun, or other inclement weather.

**RIDE AT YOUR OWN RISK AND ALWAYS USE COMMON SENSE.** This manual contains many warnings and cautions concerning the consequences of failing to inspect, maintain or properly use your electric ride-on toy. Because any fall can result in serious injury or even death, we do not repeat the warning of possible serious injury or death each time such a possibility is mentioned in this manual or the risk of falling leads to a warning.

**ALWAYS USE PROPER RIDING ATTIRE.** Always wear appropriate clothing and shoes. Never ride barefoot or in sandals and make sure that shoelaces or other fasteners are tied and kept away from the wheels and drive system of the ride-on toy.

## **RIDER USE AND REQUIRED PARENTAL SUPERVISION**

**RIDERS MUST NOT EXCEED THE WEIGHT LIMIT OF 65 LBS (29.5 KG) PER SEAT (TOTAL OF 130 LBS/59 KG) AND MUST BE OVER 3 YEARS OLD. NEVER ALLOW MORE THAN 2 CHILDREN TO RIDE THE RIDE-ON TOY SIMULTANEOUSLY.**

The age grade for the electric ride-on toy is for 3 years and older. Just because your child is within the age and weight limitations specified for the electric ride-on toy, does not mean that his/her size is appropriate to fit or maintain control of the electric ride-on toy, or that he/she is capable of safely operating the electric ride-on toy. You are the best judge of whether you or your child can safely operate the electric ride-on toy; this includes determining whether your child is at the appropriate developmental stage for safe use of the electric ride-on toy. Any rider that is unable to fit comfortably on the electric ride-on toy should never attempt to ride it. A parent's decision to allow their child to use the electric ride-on toy should be based on the child's maturity, skill and their ability to follow rules. Remember that the electric ride-on toy is intended for use only by children who are, at a minimum, able to comfortably and safely operate it.

Children operating the electric ride-on toy should be supervised by an adult at all times. Parents should ensure that children only use the electric ride-on toy safely and within their age and physical limits.

This manual contains very important safety information. It is your responsibility to completely review this information and make sure that all riders understand all of the warnings, cautions, instructions and safety topics addressed in this manual and to assure that all riders are able to safely and responsibly use the electric ride-on toy. You should periodically review and reinforce all information in this manual with all riders, especially children. You should also regularly inspect and maintain your electric ride-on toy to ensure the safety of all riders. Make sure that your new electric ride-on toy is properly fitted to any child riding it; that it is in good repair and safe operating condition; that you and your child have gone over the use, operation and safety information in this manual; that you and your child have learned and understand what to do and what not to do with your new electric ride-on toy, including observing all applicable laws, rules and common sense.

Children should be made aware of all possible riding hazards and correct riding behavior before they ride the electric ride-on toy and should be supervised by an adult at all times. Please explain the following to them as often as necessary.



## **SAFE RIDING PRACTICES AND WARNINGS**

- Check and obey all local laws or regulations which may be in effect in the locations where the electric ride-on toy may be used.
- Always wear appropriate clothing and shoes.
- Observe the age and weight limitations on the cover of this manual.
- Always stay seated while riding the electric ride-on toy. To stop you must take your foot off the foot pedal.
- Children must be supervised by an adult at all times to be safe.
- Always be alert and ride your electric ride-on toy defensively. Watch out for obstacles that could catch one of the electric ride-on toy's wheels or force you to turn suddenly and/or lose control. Be careful to avoid pedestrians, persons using other wheeled products (including roller or in-line skates, skateboards, scooters, bikes, etc.), children or animals who may enter your path. Always respect the rights and property of others.
- Do not activate the foot pedal unless you are seated in the ride-on toy and in a safe, outdoor environment that is suitable for riding your electric ride-on toy.
- Do not attempt or perform any stunts or tricks on the electric ride-on toy. It is not made to withstand such misuse and abuse.
- Keep both hands on the steering wheel at all times.
- Do not touch the motor on the electric ride-on toy when in use or directly after use as these parts can become extremely hot.
- Never allow more than one child to ride the electric ride-on toy at one time and never try to tow anything.
- Do not use near steps, water, or swimming pools.
- Do not ride in wet weather.
- Never immerse the electric ride-on toy in water; electrical and drive components could be damaged by water or create other potentially unsafe conditions.
- Keep your fingers and other body parts away from the motor, steering system, wheels and all other moving components.
- Never hitch onto another vehicle or let yourself be pulled or pull anyone or anything while riding the electric ride-on toy.
- Ride only on smooth, flat, dry surfaces such as pavement or level ground without loose debris, such as sand, leaves, rocks or gravel. Water, mud, ice, bumpy, uneven, slick, or rough surfaces could impair traction and contribute to possible loss of control.
- Do not ride on or near hills or steep inclines. Ride only on level ground to avoid tip over.
- Avoid sharp turns, bumps, drainage grates, and other obstacles.
- Do not ride at night or where there is limited visibility.
- Do not ride indoors or on surfaces that could become damaged such as carpet or flooring.
- Do not ride on streets, around cars, or in foot or vehicle traffic.
- Regularly check the electric ride-on toy and its components. If any parts are broken or worn, do not ride the electric ride-on toy until you have fixed or replaced the broken or worn parts. Contact our Customer Service Team at [dynacraftwheels.com/contact](http://dynacraftwheels.com/contact) for replacement parts.

- Do not allow hands, feet, hair, body parts, clothing, or similar articles to come in contact with wheels or other moving parts.
- Before each cycle of operation, you must perform the pre-operation checks specified in this manual or by the manufacturer, including:
  - That all guards and pads originally supplied by the manufacturer are in proper place and in serviceable condition;
  - That the area that the unit is to be operated in is safe and suitable for safe operation;
  - That all safety labels are in place and understood by everyone, including the riders;
  - That any and all axle guards, chain guards, or other covers or guards supplied by the manufacturer are in place and in serviceable condition; and
  - That tires/wheels are in good condition and have sufficient tread remaining.
- Avoid sharp bumps, drainage grates, and sudden surface changes.

## PRE-RIDE SAFETY CHECKLIST

- Check to make sure that all components are properly secured and are functioning according to the manufacturer's specifications.
- Components must be maintained and repaired and only with the manufacturer's authorized replacement parts. Installation should be performed only by adult, qualified personnel.

## USING THE CHARGER

The charger should be examined regularly for damage to the cord, plug, enclosure and other parts. In the event such damage has occurred, the electric ride-on toy should not be charged until the charger has been repaired by qualified personnel or replaced. Use only the supplied, recommended charger.

- Always use caution when charging.
- The charger is not a toy and should be operated by an adult.
- Never operate the charger near flammable materials or liquids, and operate the charger in well-ventilated areas.
- Disconnect the charger and unplug it from the electric ride-on toy when not in use.
- Do not exceed the recommended charging time.
- Always disconnect the charger from the electric ride-on toy prior to wiping down or cleaning the electric ride-on toy with any liquid.

**⚠ WARNING:** Never modify or alter the electrical system. Risk of fire. Do not bypass the fuse. Replace only with 3A fuse, located under the dashboard. Alterations could cause a fire or explosion resulting in serious injury or death and could also ruin the electrical system.

**FAILURE TO HEED THE WARNINGS LISTED ABOVE INCREASES RISK OF POTENTIALLY SERIOUS INJURY. USE THE APPROPRIATE CAUTION WHEN RIDING AND ALWAYS WEAR APPROPRIATE CLOTHING AND SHOES.**

# BEFORE YOU BEGIN ASSEMBLY

B

**NOTE:** Remove all packing and items from the display box. Make sure that the power switch is turned "OFF" before assembling the electric ride-on toy.

## ESTIMATED ASSEMBLY TIME

Because this ride-on toy is heavy and large, we strongly suggest two people to complete assembly. You should allow approximately 60 minutes for assembly, not including initial charging time. Initial charging can take approximately 18 hours (see pages 22-24 for charging information).

### **WARNING: DO NOT USE NON-ORIGINAL OR NON-RECOMMENDED PRODUCTS WITH YOUR ELECTRIC RIDE-ON TOY.**

**Altering of the original components or use of non-recommended replacement parts may or may not be compatible with the design and will void the warranty and may cause an unsafe condition resulting in serious injury or death. Contact our Customer Service Team for original replacement parts at [dyncraftwheels.com/contact](https://dyncraftwheels.com/contact).**

If you experience a problem with this product, or are missing a part, please contact our Customer Service Team at [dyncraftwheels.com/contact](https://dyncraftwheels.com/contact), rather than return this product to the store.

Please identify all parts before assembly and save all packaging material until assembly is complete to ensure that no parts are discarded.

# PARTS DIAGRAM

C

## Tools Required



Phillips Screwdriver  
(not included)



Small Screwdriver  
(included)



17mm Socket Wrench  
(included)



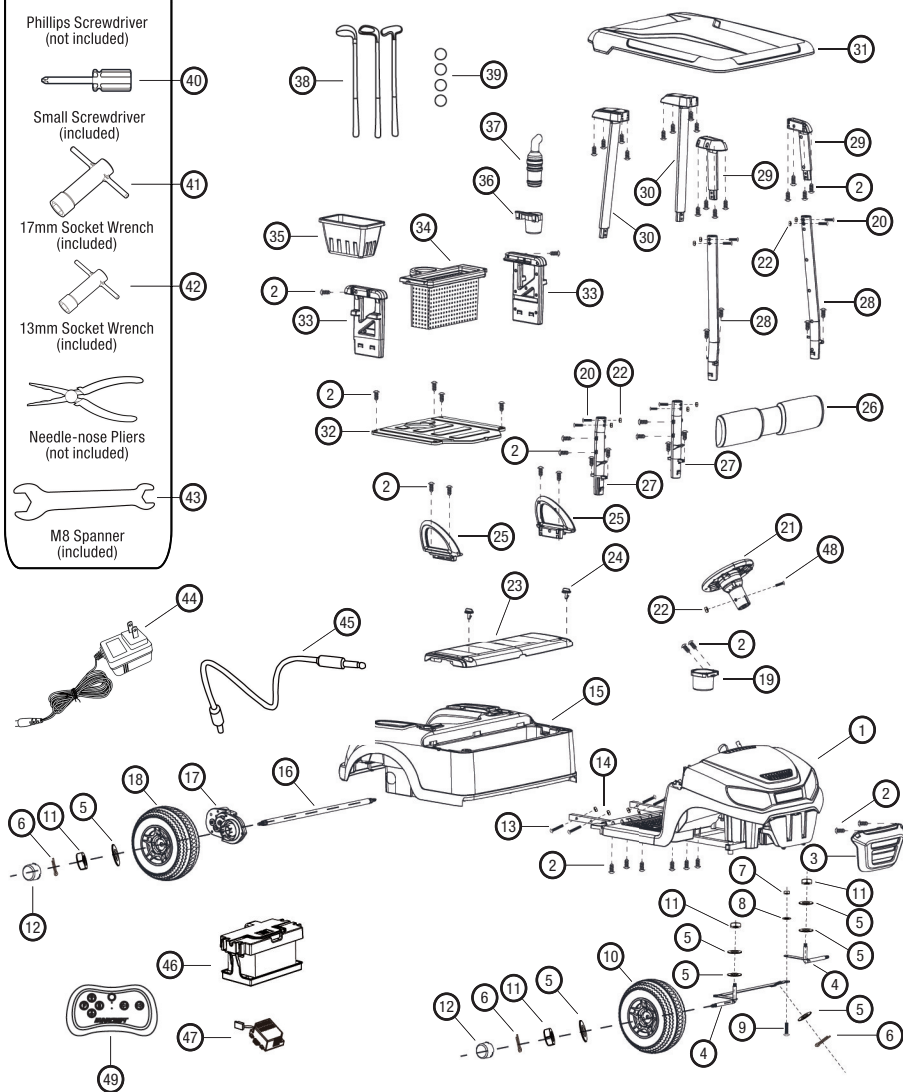
13mm Socket Wrench  
(included)



Needle-nose Pliers  
(not included)



M8 Spanner  
(included)



- |   |                                    |
|---|------------------------------------|
| 1. Front Body x1                            | 26. Seat Backx1                    |
| 2. 4x16 mm Round Head Screw x52             | 27. Roof Rear Lower Support x2     |
| 3. Front Bumper x1                          | 28. Roof Front Lower Support x2    |
| 4. Front Axle x2 (A&B)                      | 29. Roof Front Upper Support x2    |
| 5. Ø12 Washer x9                            | 30. Roof Rear Upper Support x2     |
| 6. Split Pin x5                             | 31. Roof x1                        |
| 7. M6 Lock Nut x1                           | 32. Motor Cover x1                 |
| 8. Ø6 Washer x1                             | 33. Net Basket Rack x2             |
| 9. M6x16 Machine Screw x1                   | 34. Net Basket x1                  |
| 10. Front Wheel x2                          | 35. Plastic Basket x1              |
| 11. M10 Lock Nut x6                         | 36. Sand Bottle Holder x1          |
| 12. Axle Cap x4                             | 37. Sand Bottle x1                 |
| 13. M8x50 Machine Screw x4                  | 38. Golf Club x3                   |
| 14. M8 Lock Nut x4                          | 39. Golf Ball x4                   |
| 15. Rear Body x1                            | 40. Small Screwdriver x1           |
| 16. Rear Axle x1                            | 41. 17 mm Socket Wrench (white) x2 |
| 17. Gear Box x2                             | 42. 13 mm Socket Wrench (black) x1 |
| 18. Rear Wheel x2                           | 43. M8 Spanner x1                  |
| 19. Cup Holder x1                           | 44. Charger x1                     |
| 20. M5x30 Machine Screw x8                  | 45. Audio Input Cable x1           |
| 21. Steering Wheel Assembly x1              | 46. Battery x1                     |
| 22. M5 Lock Nut x9                          | 47. Controller x1                  |
| 23. Seat Bottom x1                          | 48. M5x40 Machine Screw x1         |
| 24. Twist Lock x2 (attached on seat bottom) | 49. Remote Controller x1           |
| 25. Armrest x2                              |                                    |

**NOTE: Some parts shown are assembled on both sides of ride-on toy. Parts are packaged at both ends of box and in ride-on chassis. Ensure all parts are present before assembly.**

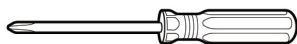
# ASSEMBLY

D

Your new ride-on toy requires adult assembly. Because your new ride-on toy is heavy and large, we strongly suggest using two people to finish assembly. Set aside around 60 minutes for assembly. Identify all parts before assembly and save all packaging material until assembly is completed to ensure that no parts are discarded.

## TOOLS REQUIRED:

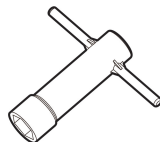
Phillips Screwdriver  
(not included)



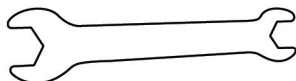
Small Screwdriver  
(included)



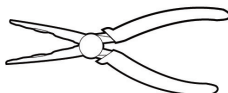
17 mm Socket Wrench  
(included)



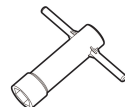
M8 Spanner  
(included)



Needle-Nose Pliers  
(not included)



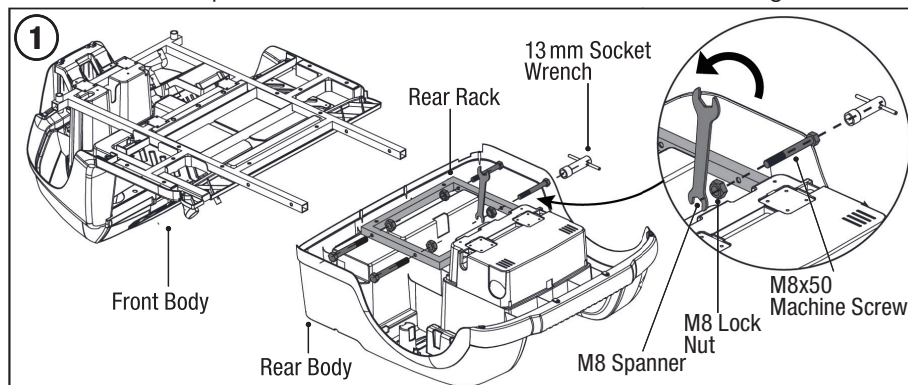
13 mm Socket Wrench  
(included)



**⚠ WARNING:** Children can be harmed by small parts, sharp edges and sharp points in the ride-on toy's unassembled state, or by electrical items. In the unassembled state, this package contains small parts. Adult assembly is required; children should not handle parts, or help in assembly of the ride-on toy.

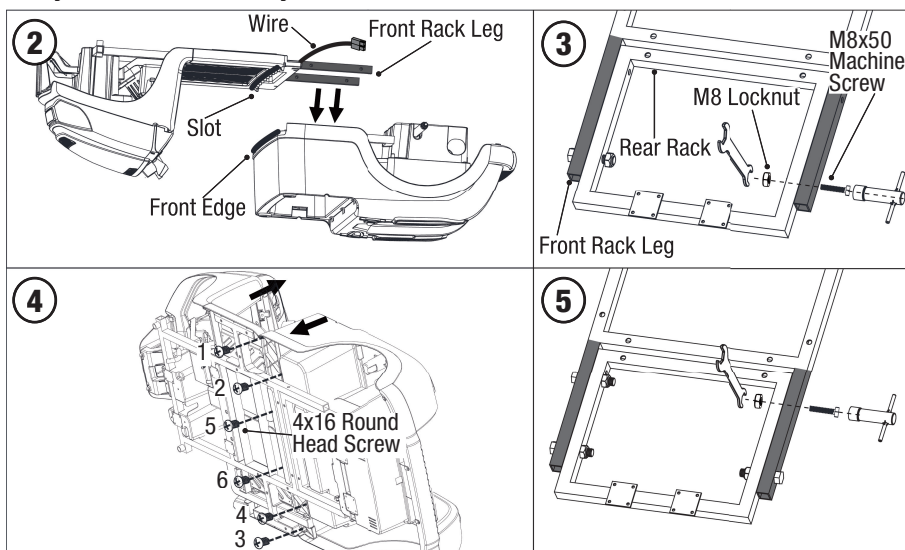
## 1. MAIN BODY ASSEMBLY

- Find Front Body and Rear Body, and turning them upside down as shown.
- Remove the four M8x50 machine screws and the four M8 locknuts from the rear rack with a M8 spanner and a 13mm socket wrench as shown in diagram 1.



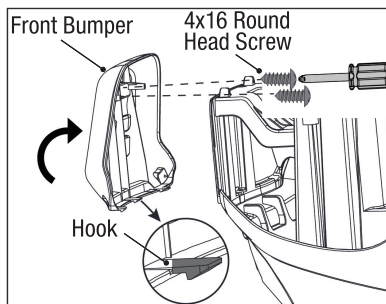
- Position the Front Body over the Rear Body, ensuring wires are pulled out as shown and making sure front edge of the rear body goes into the slot of the front body as shown in diagram 2. Use hand to tighten the front rack legs and rear rack with two M8x50 machine screws and two M8 locknuts (that removed in second step, using the M8 spanner and the 13mm socket wrench that comes with the product, do not over-tighten at this time as shown in diagram 3).
- Gently turn the Front Body together with the Rear Body on its side, and pat with hands from both sides to make sure they sit well with each other, then secure the main body with six 4x16 round head screws as shown in diagram 4, following the sequence as shown to tighten one by one.
- Gently lay down the body upside down again, secure the front rack legs and rear rack with the another two M8x50 machine screws and M8 locknuts, tighten securely using the M8 spanner and the 13mm socket wrench. Re-tighten the two M8x50 machine screws and M8 locknuts that shown in diagram 3.

**⚠ WARNING:** Make sure main body assembly is properly secured before letting anyone use the ride-on toy.



## 2. FRONT BUMPER ASSEMBLY

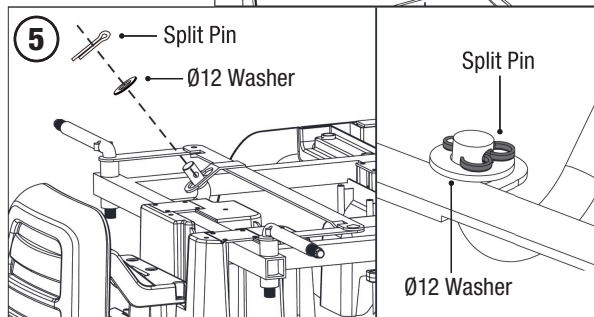
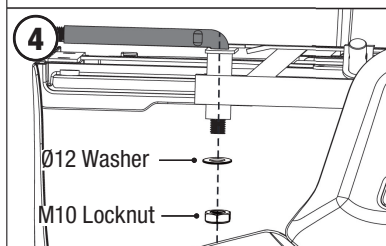
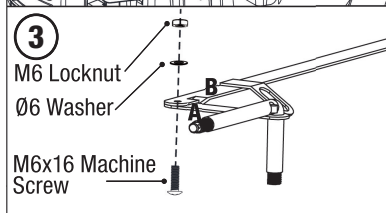
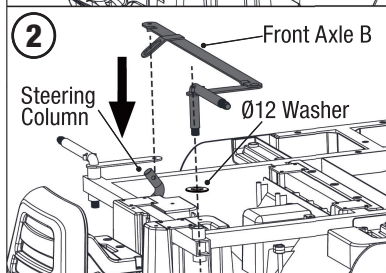
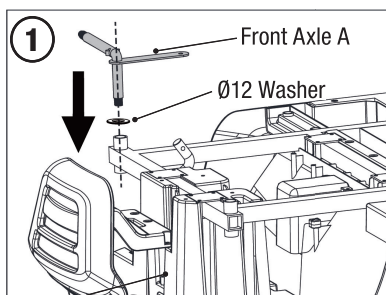
- Insert the three hooks into the slot in the front of the ride-on toy and attach the front bumper to the ride-on toy.
- Tighten the front bumper with two 4x16 round head screws using the small screw driver that comes with product.



### 3. FRONT AXLE ASSEMBLY

- Cut the tie on the front axle with scissors and remove all parts from front axles A and B.
- Fit a Ø12 washer onto the hole at one side of the front iron rack, then insert front axle A into the hole as shown in diagram 1.
- Fit a Ø12 washer onto another hole at another side of the front iron rack, then insert front axle B into the hole (meanwhile making sure the bent end of the steering column goes through the center bracket hole of front axle B) as shown in diagram 1. **NOTE: Make sure Front Axle B sits over Front Axle A.**
- Insert the M6x16 machine screw through the holes in the plate A and the plate B. Install the Ø6 washer and the M6 locknut and tighten securely with a needle-nose pliers as shown in diagram 3. **NOTE: Do not over-tighten.**
- Install the Ø12 washer and the M10 locknut, and tighten it securely with 17mm socket wrench as shown in diagram 4. Repeat this step for front axle on the other side.
- Fit a Ø12 washer onto the bent end of the steering column. Insert a split pin into the hole in the bent end of steering column, and split it using needle-nose pliers (to assure the washer will not fall out) as shown diagram 5.

**⚠ WARNING:** Make sure front axle assembly is properly secured before letting anyone use the ride-on toy.



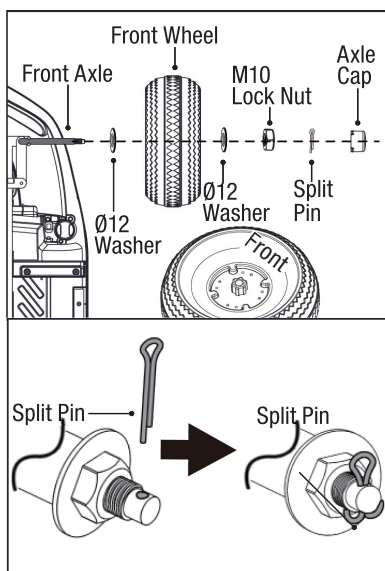


## 4. FRONT WHEEL ASSEMBLY

- Remove all parts from front axle.
- Slide a Ø12 washer onto the axle.
- Find a front wheel labeled "FRONT", slide the wheel onto the axle.
- Install a Ø12 washer and M10 locknut, then tighten it with the 17 mm socket wrench.

**NOTE:** Do not over-tighten. For your safety, make sure you insert a split pin into the hole in the end of front axle, and split it with standard needle-nose pliers.

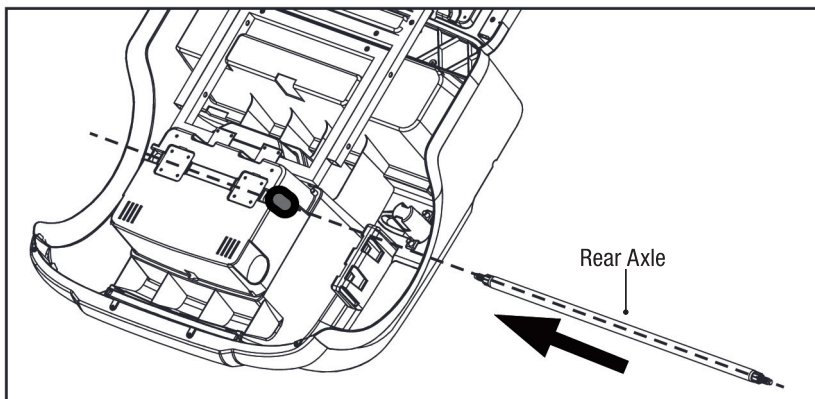
- Insert the axle cap until it clicks into place.
- Repeat above operation for the front wheel on the other side.



## 5. REAR AXLE ASSEMBLY

- Remove all parts from the rear axle.
- Insert the rear axle through the hole in the ride-on toy, following the direction of the arrow as shown. When the rear axle is halfway through, lift the other right side gear box so that the rear axle can protrude through it.

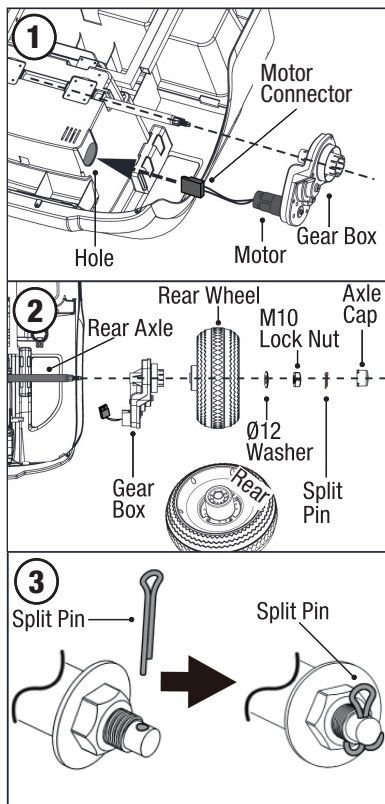
**NOTE:** Make sure that the rear axle is centered with left and right ends exposed the same distance outside of the ride-on toy body.



## 6. GEAR BOX AND REAR WHEEL ASSEMBLY

- Slide a gear box onto the axle, and insert the motor and motor connector into the hole at the end of the ride-on toy as shown in diagram 1.
- Find a rear wheel labeled "REAR", slide the wheel onto the rear axle and make it match up with the gear box .
- Insert a Ø12 washer onto the axle.
- While holding the rear axle with a 17mm socket wrench at opposite, fit the M10 locknut to the end of the rear axle with another 17 mm socket wrench. DO NOT over tighten; the rear axle ends are supposed to be exposed; 1-2 threads exposed is acceptable.
- For your safety, insert a split pin into the hole in the end of rear axle, and split it using standard needle nose pliers as shown in diagram 3.
- Insert the axle cap until it clicks into place.
- Repeat steps above for the rear wheel on the other side.

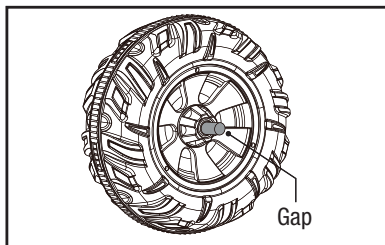
**⚠ WARNING:** Make sure that the axle assemblies and wheels are properly tightened and secure before letting anyone use the ride-on toy. Failure to do so may result in a loss of control and serious injury or death.



## IMPORTANT! CHECK WHEEL GAP

After assembling any wheel onto the axles, check the gap between the screw thread and the outside of the wheel (refer to the adjacent diagram).

If the gap is too big, add two or three washers on the axle to the inside of the wheel. After tightening the nut on the outside of the wheel, spin the wheel to check if the wheel spins smoothly. If the wheel gets caught or does not spin smoothly, the friction may cause damage to the motor. Try increasing the gap by removing one or two washers to ensure the wheel spins smoothly.



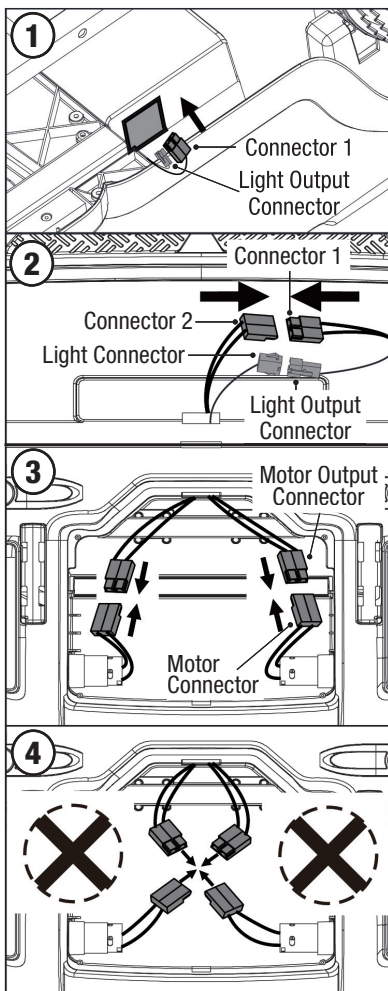
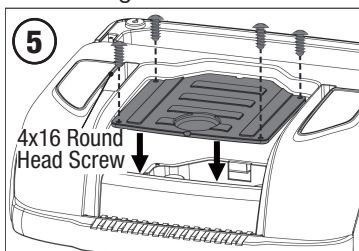
**NOTE:** If the wheel nuts are loose, the wheels will not engage the forward gear. Tighten the nut with the socket wrench.

## 7. MOTOR CONNECTION

- Insert the connector 1 and light output connector into the hole in middle of the ride-on toy as shown in diagram 1.
- Gently turn the ride-on toy body upright.
- Plug the connector 1 (under the seat) into the connector 2 (under the seat). Plug the light connector (under the seat) into the light output connector (under the seat) as shown in diagram 2.
- Plug the right side motor connector only into the right side motor output connector. Plug the left side motor connector only into the left side motor output connector as shown in diagram 3.

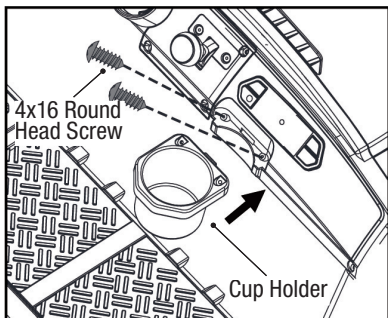
**IMPORTANT! DO NOT CROSS CONNECT LEFT TO RIGHT, OR RIGHT TO LEFT AS SHOWN IN DIAGRAM 4! FAILURE TO PROPERLY CONNECT THE CONNECTORS WILL RESULT IN THE FORWARD AND BACKWARD DIRECTIONS BEING REVERSED. WHEN SUCH THING HAPPEN, PLEASE RECONNECT THE CONNECTORS AGAIN.**

- Place the motor cover to the position as show below and secure the motor cover with four 4x16 round head screws as shown in diagram 5.



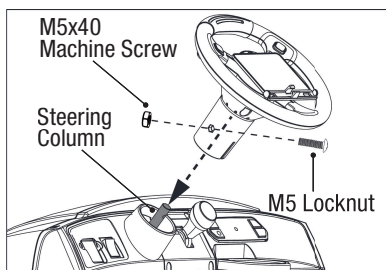
## 8. CUP HOLDER ASSEMBLY

- Insert the cup holder into the dashboard and secure the cup holder with two 4x16 round head screws.



## 9. STEERING WHEEL ASSEMBLY

- Lift the steering column and make it protruding to the highest, and remove the M5x40 machine screw on it.
- Remove the M5x40 machine screw and M5 locknut from the steering column.
- Insert the steering wheel onto the end of the steering column, lining up the hole in the steering wheel and the hole in the steering column. Reinsert the M5x40 machine screw as shown, and tighten it with M5 locknut securely.

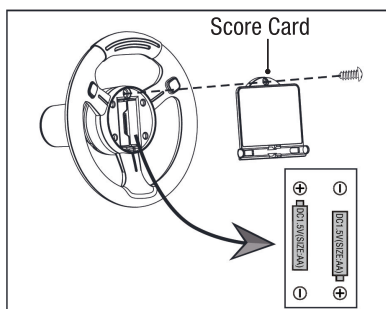


**! WARNING:** Make sure that the steering wheel is securely fastened and that the steering functions properly before letting anyone use the ride-on toy.

## 10. STEERING WHEEL BATTERIES INSTALLATION

**NOTE:** Batteries are not included.

- Unscrew the screw in the steering wheel and remove the score card.
- Insert 2 x 1.5V size AA AM-3 or LR6 batteries, observing the polarity indicated.
- Replace the score card and tighten the screw to secure it in place.



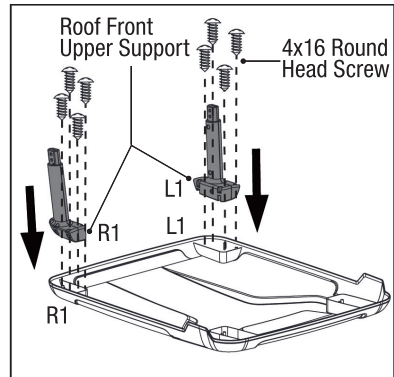
## STEERING WHEEL BATTERY SAFETY INFORMATION:

Batteries may leak fluids that can cause chemical burn, injury or ruin your product. To avoid battery leakage:

- Install batteries correctly, observing the polarity (+/-) signs to avoid leakage.
- Do not mix old and new batteries.
- Do not mix batteries of different types: alkaline, standard (carbon-zinc) or rechargeable (NiMH).
- Remove the batteries from the battery compartment when the unit will not be used for an extended period of time.
- Always remove exhausted batteries from the battery compartment.
- Do not dispose of batteries in fire.
- Do not short circuit the supply terminals.
- Replace the batteries when the horn sounds become distorted.
- Non-rechargeable batteries should not be recharged.
- Use only batteries of the same or equivalent type as recommended.
- If rechargeable batteries are used, they should only be charged by an adult.
- Remove rechargeable batteries from the product before charging.
- Battery chargers used with toys must be examined regularly for damage to the cord, plug, enclosure and other parts. In the event that such damage is found, the toy must not be used with the battery charger until the damage has been repaired.

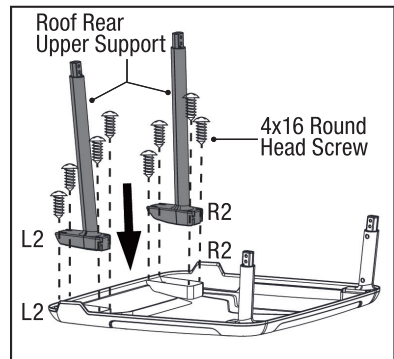
## 11. ROOF FRONT UPPER SUPPORT ASSEMBLY

- Find the roof and its front upper supports.
- Find one Front Upper Support marked with “L1”, insert it into the corresponding slot marked with “L1” on the roof and secure it with four 4x16 round head screws.
- Find the other Front Upper Support marked with “R1”, insert it into the corresponding slot marked with “R1” on the roof and secure it with four 4x16 round head screws.



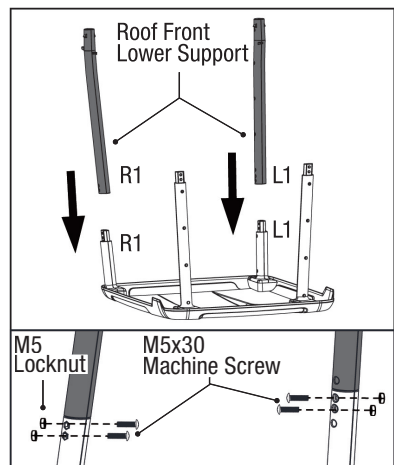
## 12. ROOF REAR UPPER SUPPORT ASSEMBLY

- Find one Rear Upper Support marked with “L2”, insert it into the corresponding slot marked with “L2” on the roof and secure it with four 4x16 round head screws.
- Find the other Rear Upper Support marked with “R2”, insert it into the corresponding slot marked with “R2” on the roof and secure it with four 4x16 round head screws.



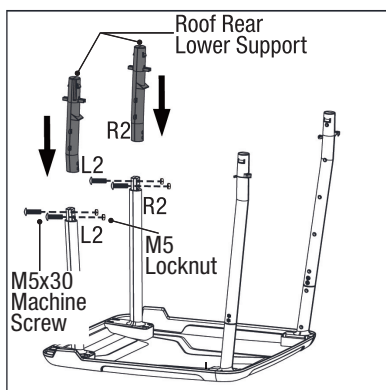
## 13. ROOF FRONT LOWER SUPPORT ASSEMBLY

- Find one Front Lower Support marked with “L1”. Remove two M5x30 machine screws and two M5 locknuts from the support.
- Attach the support to the corresponding Front Upper Support marked with “L1”. Reinsert the M5x30 machine screw, and tighten it with M5 locknut securely.
- Find one Front Lower Support marked with “R1”. Remove two the M5x30 machine screws and two M5 locknuts from the support.
- Attach the support to the corresponding Front Upper Support marked with “R1”. Reinsert the M5x30 machine screw, and tighten it with M5 locknut securely.



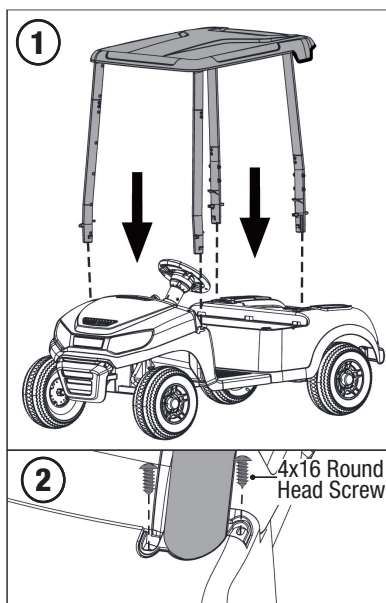
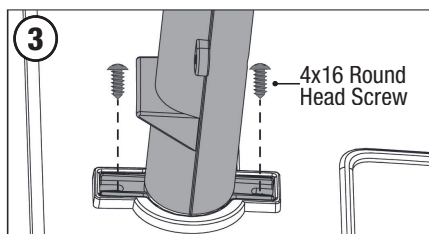
## 14. ROOF REAR LOWER SUPPORT ASSEMBLY

- Find one Rear Lower Support marked with “L2”. Remove two M5x30 machine screws and two M5 locknuts from the support.
- Attach the support to the corresponding Rear Upper Support marked with “L2”, reinsert the M5x30 machine screw, and tighten it with M5 locknut securely.
- Find one Rear Lower Support marked with “R2”. Remove two the M5x30 machine screws and two M5 locknuts from the support.
- Attach the support to the corresponding Rear Upper Support marked with “R2”, reinsert the M5x30 machine screw, and tighten it with M5 locknut securely.



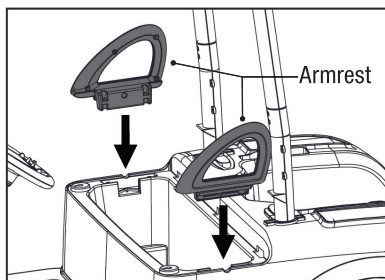
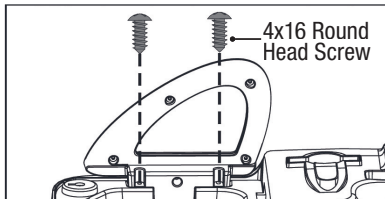
## 15. ROOF ASSEMBLY INSTALLATION

- Insert the Front and Rear Lower Supports into 4 corresponding holes in ride-on toy body as shown in diagram 1.
- Secure each Front Lower Supports with two 4x16 round head screws as shown in diagram 2.
- Secure each Rear Lower Supports with two 4x16 round head screws as shown in diagram 3.



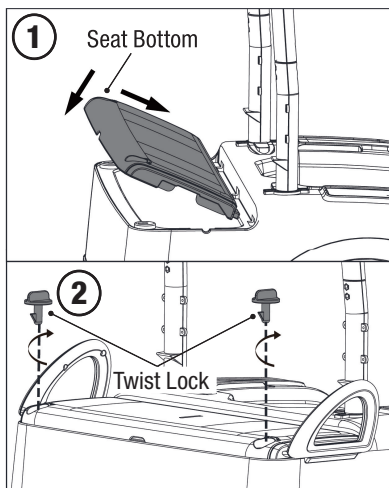
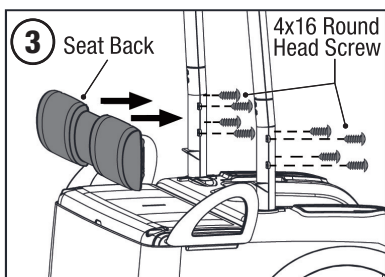
## 16. ARMREST ASSEMBLY

- Insert one armrest into the slot in the middle of ride-on toy and secure the armrest with two 4x16 round head screws.
- Repeat above operation for the armrest on the other side.



## 17. SEAT INSTALLATION

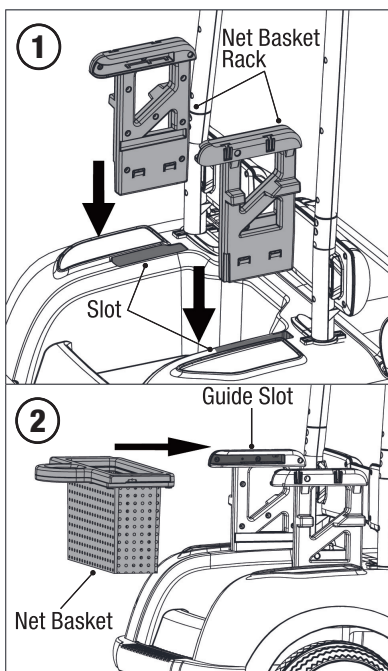
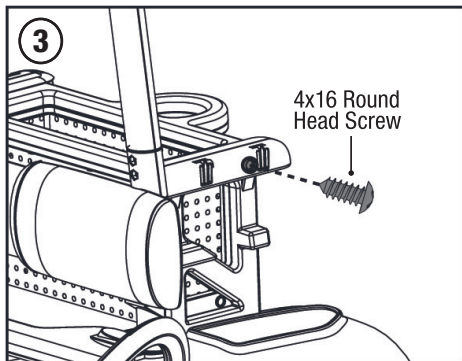
- Insert the seat bottom into the slots in the ride-on toy body, then push down the seat to the place as shown in diagram 1 (make sure the safety belt being positioned outside).
- Rotate the twist locks (attached on seat bottom) to secure the seat bottom as shown in diagram 2.
- Attach the seat back to the Rear Lower Support, and tighten each side of the seat back with four 4x16 round head screws as shown in diagram 3.





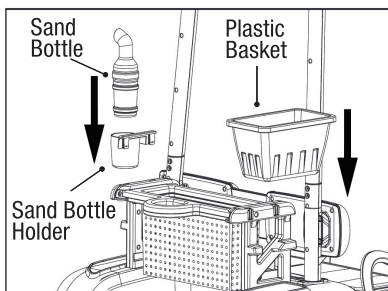
## 18. NET BASKET ASSEMBLY

- Click two net basket racks into the slots in the rear of the ride-on toy body as shown in diagram 1.
- Slide the net basket into the guide slots in the top of the net basket racks as shown in diagram 2.
- Secure each side of the net basket with one 4x16 round head screws as shown in diagram 3.



## 19. PLASTIC BASKET AND SAND BOTTLE ASSEMBLY

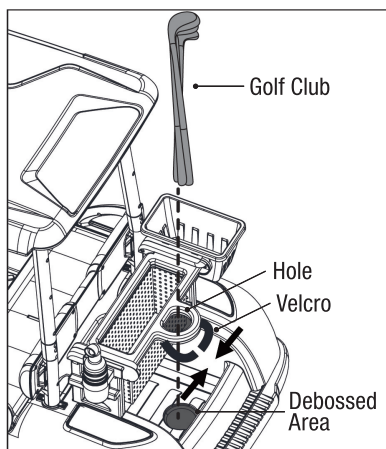
- Insert the plastic basket and the sand bottle holder into the slots in the top of net basket racks.
- Place the sand bottle into the sand bottle holder.





## 20. GOLF CLUB ASSEMBLY

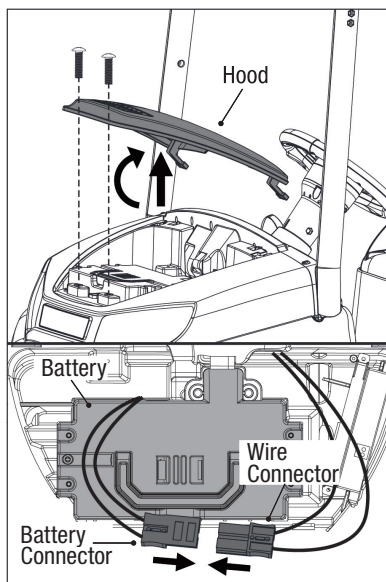
- Insert three golf clubs through the hole in the net basket rack to the debossed area in the motor cover.
- Tie the golf clubs using attached Velcro.



## 21. POWER SUPPLY CONNECTION

**NOTE:** The battery is disconnected for shipment to prevent the battery from draining.

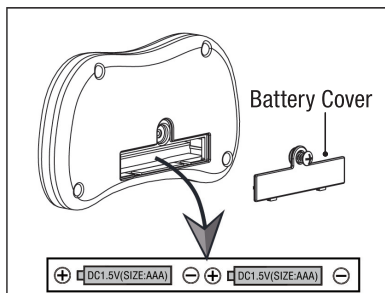
- Unscrew the two screws on the hood and remove the hood.
- Securely plug the battery connector into the wire connector.
- Replace the hood and secure the hood with two machine screws removed in step 1.



## 15. REMOTE CONTROLLER BATTERIES INSTALLATION

**NOTE: Batteries are not included.**

- Unscrew the screw in the remote controller and remove the battery cover.
- Insert 2x1.5V size AAA or LR 03 batteries, observing the polarity indicated.
- Replace the battery cover and tighten the screw to secure it in place.



### REMOTE CONTROLLER BATTERY SAFETY INFORMATION:

Batteries may leak fluids that can cause chemical burn, injury or ruin your product. To avoid battery leakage:

- Install batteries correctly, observing the polarity (+/-) signs to avoid leakage.
- Do not mix old and new batteries.
- Do not mix batteries of different types: alkaline, standard (carbon-zinc) or rechargeable (-).
- Remove the batteries from the battery compartment when the unit will not be used for an extended period of time.
- Always remove exhausted batteries from the battery compartment.
- Do not dispose of batteries in fire.
- Do not short circuit the supply terminals.
- Replace the batteries when the indicator lights getting dim.
- Non-rechargeable batteries should not be recharged.
- Use only batteries of the same or equivalent type as recommended.
- If rechargeable batteries are used, they should only be charged by an adult.
- Remove rechargeable batteries from the product before charging.
- Battery chargers used with toys must be examined regularly for damage to the cord, plug, enclosure and other parts. In the event that such damage is found, the toy must not be used with the battery charger until the damage has been repaired.

## BATTERY CHARGING

**IMPORTANT!** Before first time use, charge the battery for at least 18 hours. Charge the battery for at least 12 hours after each use of the ride-on toy. Never charge the battery longer than 30 hours. Overcharging or undercharging the battery may shorten battery life and decrease ride-on toy running time.

**⚠ WARNING:** Battery can fall out and injure a child if the ride-on toy tips over. Always use battery cover.

### PREVENT FIRE

- Never modify the electrical system.
- Alterations could cause a fire resulting in serious injury and could also ruin the electrical system.
- Use of the wrong type battery or charger could cause a fire or explosion, resulting in serious injury.
- Use of non-original components on this ride-on toy could cause overheating, fire or explosion.
- The battery must be handled by adults only.
- The battery is heavy and contains sulfuric acid (electrolyte).
- Dropping the battery could result in serious injury.
- Never allow children to charge the battery.
- Battery charging must be done by adults only. A child could be injured by the electricity involved in charging the battery.
- Never lift or carry the battery by the wires or connector, this can damage the battery and possibly cause a fire resulting in serious injury. Lift and carry the battery by the case only.
- Read the safety instructions on the battery.
- Examine the battery, charger and their connectors for excessive wear or damage each time you charge the battery.
- If damage or excessive wear is detected, do not use the charger or the battery until you have replaced the worn or damaged part.

**⚠ WARNING:** Use the charger in dry locations only.

### IMPORTANT NOTE

- We recommend that you start charging your battery before beginning assembly of your new ride-on toy.
- The battery must be upright while charging.
- The charger is not a toy, and should only be operated by adults.
- Do not short-circuit the battery.
- You do not need to remove the battery from your ride-on toy to recharge it.
- Before charging the battery, examine the battery case for cracks and other damage which may cause sulfuric acid (electrolyte) to leak during the charging process. If damage is detected, do not charge the battery or use it in your ride-on toy. Battery acid is very corrosive and can cause severe damage to surfaces it contacts.

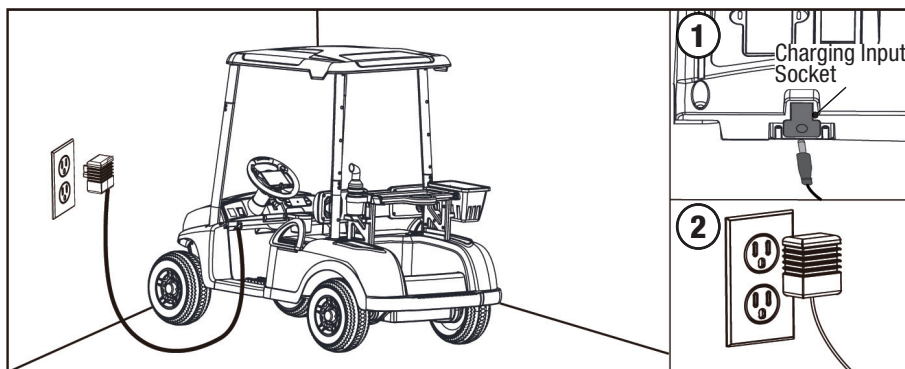
- Do not charge the battery on a surface (such as a kitchen counter top) which could be damaged by the acid contained inside the battery. Take precautions to protect the surface on which you charge your battery.
- Use only an original charger (AC 120V 60Hz) with an output of DC 24V (1A) to charge your ride-on toy battery.
- **NOTE TO ADULTS:** Regularly examine the charger for damage to the cord, plug, housing or other parts that may result in the risk of fire, electric shock or injury.
- If your battery is old and will not accept a charge, do not leave it in the ride-on toy. Always remove a dead battery from the ride-on toy.
- After the first charge, recharge the battery for at least 12 hours after each use. Never charge the battery longer than 30 hours. Charge the battery after each use, regardless of how long the ride-on toy was used.
- Do not allow the battery to run down completely before charging.
- Charge the battery before storing the ride-on toy.
- Charge the battery at least once per month, even if the ride-on toy has not been used.

**NOTE:**

- This product has CHARGING PROTECTION: when charging, all the functions will be cut off.
- Recharges after initial charge - At least 12 hours, and never charge the battery longer than 30 hours.
- When the ride-on toy begins to run slowly, recharge the battery.
- After each use, or at least once per month when not in use, recharge the battery for at least 12 hours and less than 30 hours at most.

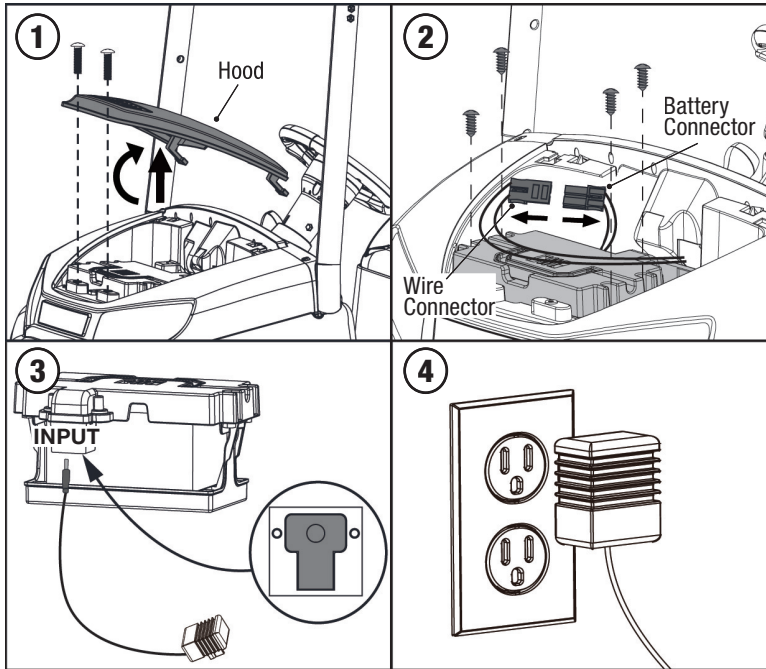
**⚠ WARNING:** Use the charger in dry locations only.

## BATTERY CHARGING METHOD 1



1. Plug the charger port into the input socket (the socket is under the seat).
2. Plug the charger plug into a wall outlet. The battery will begin charging.

## BATTERY CHARGING METHOD 2



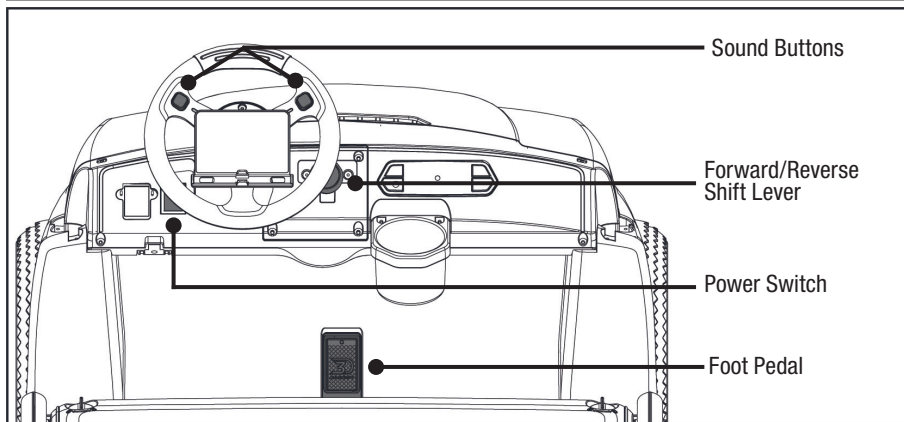
1. Unscrew the two screws on the hood and remove the hood.
2. Use a screwdriver to remove the four screws from the battery. Unplug the wire connector (which is connected to the battery connector).
3. Plug the charger port into the charging input socket (the socket is on the battery side with "INPUT" label).
4. Plug the charger plug into a wall outlet. The battery will begin charging.

**⚠ WARNING:** Keep the battery laid flat while charging.

**NOTE:** Red LED light indicates battery is charging and a green LED light indicates battery is nearly fully charged. (If the lights on the charger do not light up, check the power to the outlets.) If you have any charging questions or issues, please make sure that you have charged your unit according to the recommended charging times outlined in this manual, i.e., at least 18 hours before first use and at least 12 hours after each subsequent use, before contacting our Customer Service Team.

# HOW TO USE YOUR RIDE-ON TOY

E



## POWER SWITCH

- Turn the ride-on toy on or off.

## FOOT PEDAL

- To move the ride-on toy, press the foot pedal down.
- To stop, take your foot off the foot pedal.

## FORWARD-REVERSE SHIFT LEVER

- To move the car forward at high speed, shift the lever to the “High” position.
- To move the car forward at low speed, shift the lever to the “Low” position.
- To move the car backward, shift the lever to the “Backward” position.

**NOTE:** Use low speed until you get familiar with your new ride-on toy.

## SOUND BUTTON

To activate sound, press the buttons on the steering wheel.

## STOP

To stop the ride-on toy, you must take your foot off the pedal.

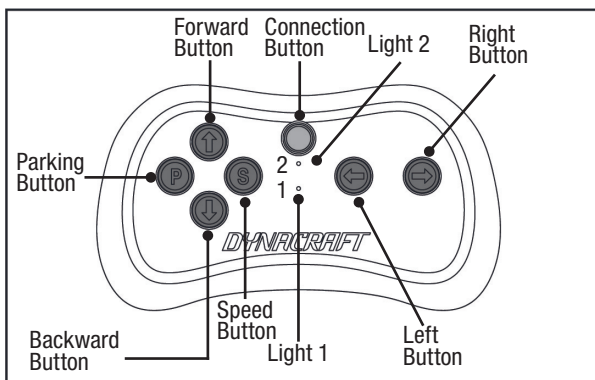
**⚠ WARNING:** The ride-on toy does not have brakes. Do not park or ride on any slopes or steep inclines.

**⚠ WARNING:** For your safety, this ride-on toy has been designed with a one second delay start. When the pedal is pressed, the ride-on toy will start to move one second later.

**⚠ WARNING:** Use low speed until you get familiar with your new ride-on toy.

**⚠ WARNING:** CHOKING HAZARD - Toy contains small balls. Not for children under 3 years.

## HOW TO USE REMOTE CONTROLLER



### CONNECTION SWITCH

- Turn off the Power Switch of the ride-on toy.
- Press the Connection Button for 5 seconds, Light 2 will flicker.
- Turn the Power Switch on.
- Solid light can be observed on Light 1 and Light 2, means the connection is successful.

**NOTE:** When replacing batteries of the remote controller, if the connection with the ride-on toy being disconnected, please repeat above operation to connect again.

### PARKING BUTTON

- Press the “P” Parking Button, the ride-on toy will stop and no other operation can be done, meanwhile the Light 1 and Light 2 will flicker.
- Press the Parking Button again, the remote controller can be operated again.

### SPEED BUTTON

- Press the “S” Speed Button to change the speed. When Light 1 light up means low speed, when Light 1 and Light 2 both light up means high speed.

### FORWARD BUTTON

- Press and hold the Forward Button, the ride-on toy will go forward.
- Release the Forward Button, the ride-on toy will stop.

### BACKWARD BUTTON

- Press and hold the Backward Button, the ride-on toy will go backward.
- Release the Backward Button, the ride-on toy will stop.

### LEFT BUTTON

- Press and hold the Left Button, the ride-on toy will turn left while going forward or backward.

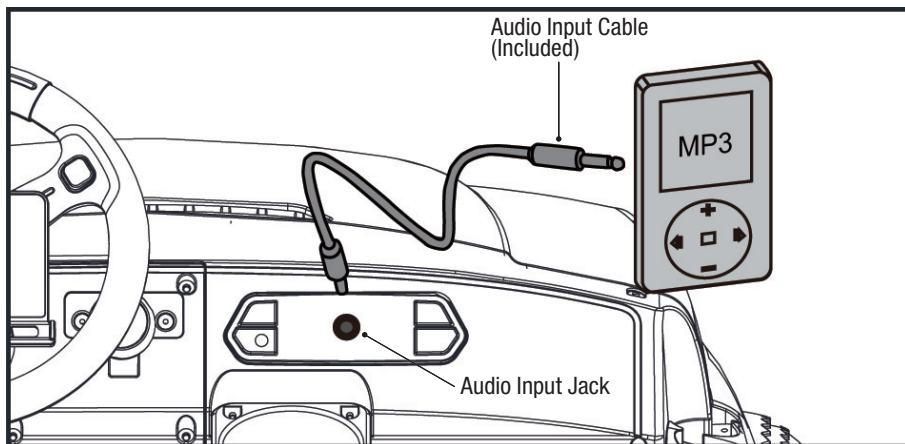
### RIGHT BUTTON

- Press and hold the Right Button, the ride-on toy will turn right while going forward or backward.

## **IMPORTANT NOTE ON REMOTE CONTROLLER**

- The remote controller only to be operated by adults, children are not allowed to operate it.
- Please ensure battery capacity of the remote controller is sufficient before use (when low current, its indicator lights will dim).
- The remote controller has energy-saving settings. After idling for about 10 seconds, it will automatically sleep, all the indicators will shut off, press any buttons to restart.
- When first use or after replacing new batteries, please proceed frequency-matching operation.
- Use the remote controller together with the ride on toy within the range of 30 meters. When losing the control beyond this distance, please move and get close to the ride on toy again.
- Avoid using near electromagnetic interference sources, common electromagnetic interference sources including high-voltage wires, high-voltage transmission stations, radar stations, mobile phone base stations, broadcast signal towers, Wi-Fi hot spots, routers, and Bluetooth devices.
- When switching to “Remote Control” mode, please ensure the adult to operate, switch the power off, and use the tool to unscrew the Remote Control Cover. After switching to “Remote Control” mode, use the tool to re-tighten the screw of the protective cover to avoid children accidentally touching the switch to another mode while riding, otherwise the ride-on toy will be in an uncontrollable state.
- Keep the remote controller when not in use.
- See page 21 for battery safety information.





### Audio Input Jack

Use the Audio input cable (Included) to connect your MP3 player or other compatible audio device with this ride-on toy to listen to and enjoy music.

1. Plug one end of the audio input cable (Included) into the audio input jack on the ride-on toy as shown.
2. Plug the other end of the audio input cable into the headphone jack on your audio device or MP3 player.
3. Adjust your audio device or MP3 player volume to low level.
4. Then adjust the volume to increase or decrease its sound level as desired.

**NOTE: MP3 player or Audio Device not included.**

**⚠ WARNING:** Do not let use of the sound buttons, an MP3 player, or other audio device interfere with safe riding.

**⚠ WARNING:** For your safety, this ride-on toy has been designed with a one second delay start. When the pedal is pressed, the ride-on toy will start to move one second later.

## IMPORTANT

- Always stop ride-on toy when changing the direction to avoid damage to the gears and motor.
- This ride-on toy has an adjustable seat belt; instruct children on how to fasten the seat belt before using.
- Do not let any child touch the wheels or be near them when the ride-on toy is moving.
- To avoid accidents, inspect the ride-on toy before riding to ensure that it is in proper working order and safe to ride.
- This toy has no brake; to stop, remove foot from the foot pedal.
- Check all the screws, cap nuts and protective coverings regularly and tighten as required. Check plastic parts on a regular basis for cracks or broken pieces.
- Your new battery must be charged for at least 18 hours before you use it in your ride-on toy for the first time.
- Do not wash the ride-on toy with water; clean it with a cloth.

## SAFETY PRECAUTIONS

- Children must have adult supervision at all times.
- Do not ride on the road, footpaths, near pools, or bodies of water.
- Do not allow children under the recommended age to ride the ride-on toy; refer to the age grading.
- Do not allow riders over the recommended weight rating or outside of the recommended age range to use the ride-on toy.
- To stop the ride-on toy, you must take your foot off the pedal.
- Charging should only be done by an adult.
- An adult must teach the child how to operate the ride-on toy.
- Do not ride on hills or slopes, in sand or on other soft, wet, or slippery surfaces.
- Do not use a different size battery. Use only original or recommended replacement batteries.
- The ride-on toy is designed to carry only a maximum weight of 130lb at a time. Never allow more than two riders or over-load the ride-on toy.
- This product should be assembled and checked by adults before use.

**⚠ WARNING:** This ride-on has no brake; to stop take foot off foot pedal. Do not park or ride on any slopes or steep inclines.

# DETAILED MAINTENANCE AND REPAIR

F

**⚠ WARNING:** Disconnect power supply before conducting any maintenance procedures.

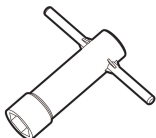
## TOOLS REQUIRED:



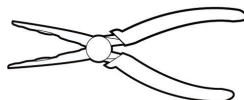
Phillips Screwdriver  
(not included)



Flat head Screwdriver  
(not included)



17 mm Socket Wrench  
(included)



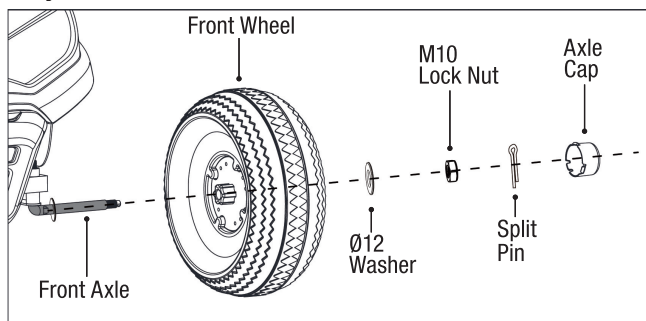
Needle-Nose Pliers  
(not included)

## HOW TO REPLACE FRONT WHEEL

1. Remove the axle cap by sliding a flat head screwdriver along the edge of the cap and carefully prying the cap open.
2. Use needle nose pliers to remove the split pin in the hole of the front axle end.
3. Remove the M10 locknut with a 17 mm socket wrench.
4. Remove the Ø12 washer.
5. Remove the wheel, then replace with a new wheel.
6. Remount the Ø12 washer and M10 locknut and securely tighten the wheel.
- NOTE: Do not over-tighten.**
7. Insert a split pin into the hole in the end of front axle, and split it using standard needle nose pliers.
8. Reinsert the axle cap until it clicks into place.

**IMPORTANT:** Check wheel gap (see page 12).

**⚠ WARNING:** Make sure the wheels are securely attached before letting anyone use the ride-on toy.



## HOW TO REPLACE REAR WHEEL AND GEAR BOX

### IF YOU DO NOT NEED TO REPLACE THE GEAR BOX, PLEASE PROCEED TO STEP 3.

1. Unscrew the screws on the motor cover with a screwdriver, and remove the motor cover.
2. Unplug the motor output connector that is connected to the old gear box.
3. Remove the axle cap with a flat head screwdriver.
4. Use needle nose pliers to remove the split pin in the hole of the rear axle end.
5. Remove the M10 locknut with a 17 mm socket wrench.
6. Remove the Ø12 washer.
7. Remove the rear wheel, then replace with a new rear wheel.

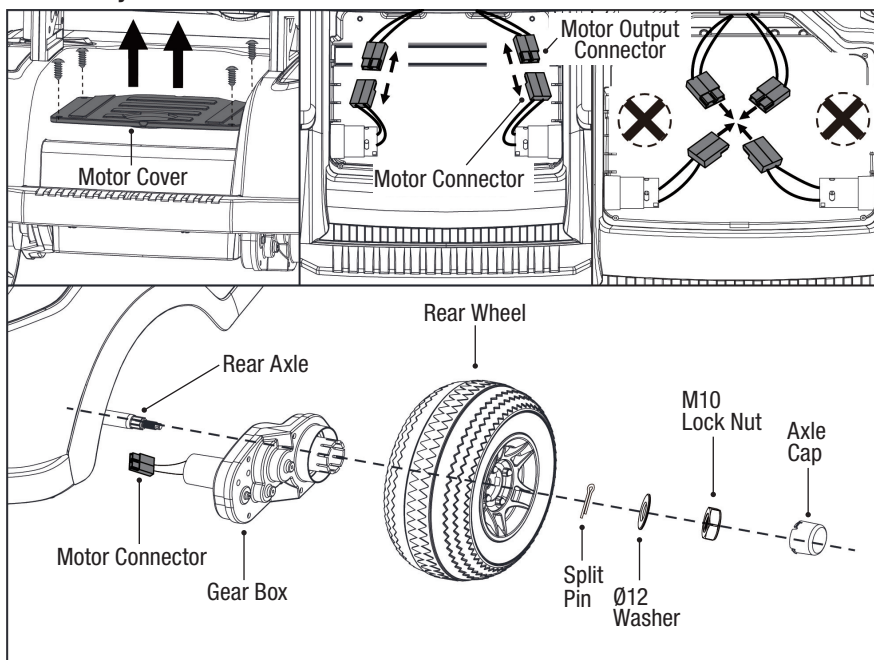
### IF YOU DO NOT NEED TO REPLACE THE GEAR BOX, PLEASE PROCEED TO STEP 9.

8. Remove the old gear box and replace with a new one.
9. Replace the rear wheel, the Ø12 washer and the M10 locknut, and tighten securely; then insert a split pin into the hole in the end of rear axle, and split it using standard needle nose pliers and re-insert the axle cap.

### IF YOU DO NOT NEED TO REPLACE THE GEAR BOX, PLEASE SKIP STEP 10.

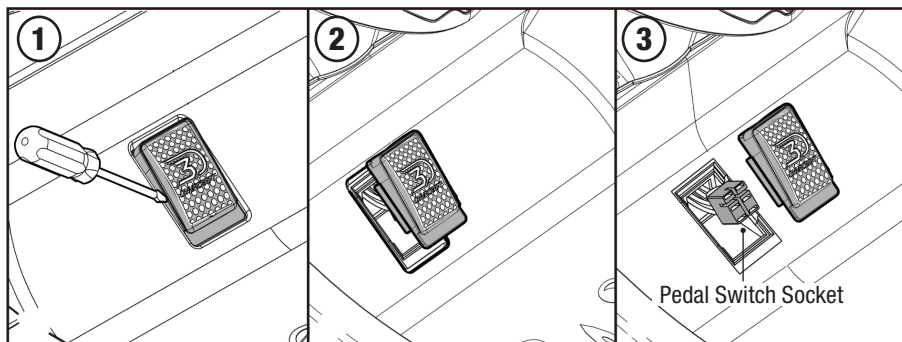
10. Plug the motor output connector back into the new gear box and replace the motor cover, secure the motor cover with 4 screws removed in step 1.

**⚠ WARNING:** Make sure the wheels are securely attached before letting anyone use the ride-on toy.



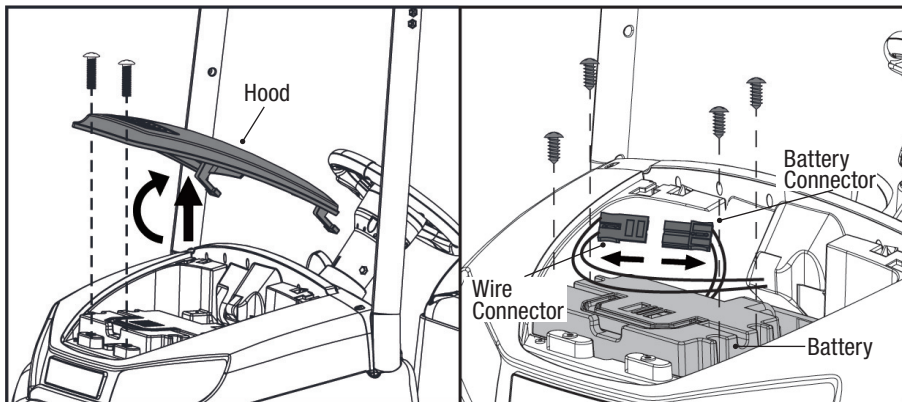
## HOW TO REPLACE THE FOOT PEDAL

1. Use a flat head screwdriver to gently pry the LEFT side of foot pedal.
2. Gently remove the foot pedal.
3. Disconnect the old foot pedal from the pedal switch socket.
4. Replace the foot pedal with a new one. Connect the new pedal switch to the pedal switch socket, making sure that they are snugly connected in the correct position (see Figure 3). Insert the right side of the foot pedal into the foot pedal compartment and then gently push down on the left side of the pedal so that it snaps into place.



## HOW TO REPLACE THE BATTERY

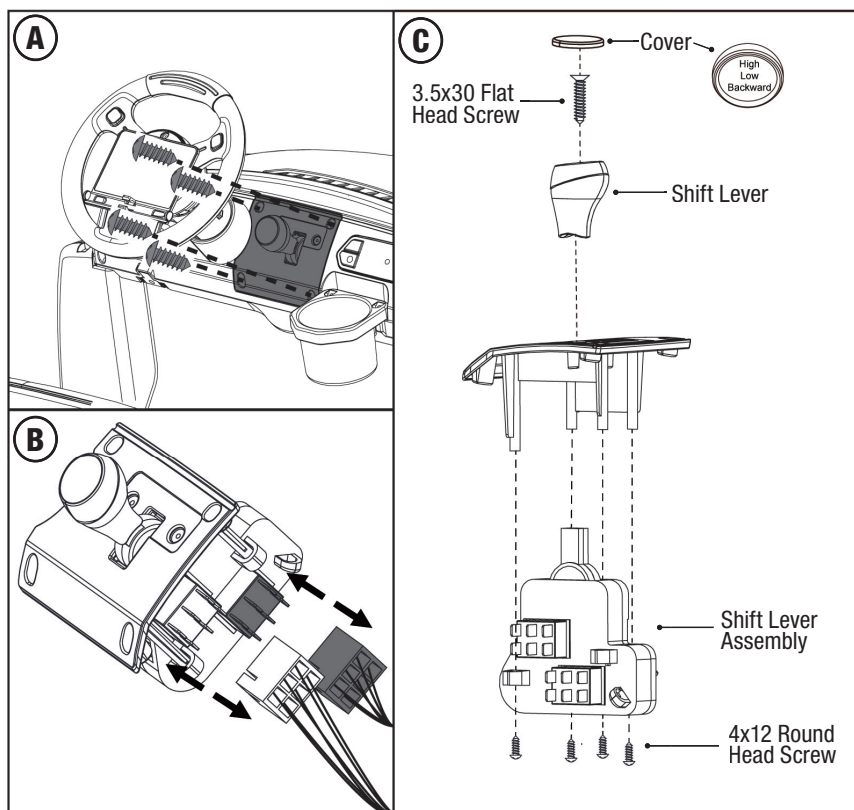
1. Unscrew the two screws on the hood and remove the hood.
2. Use a screwdriver to remove the four screws from the battery.
3. Unplug the wire connector (which is connected to the battery connector).
4. Carefully lift the dead battery and replace it with a new one, secure it with the screws.
5. Plug the wire connector into the battery connector and replace the hood, making sure to securely fasten it with the M5x30 machine screws removed in step 1.



## HOW TO REPLACE FORWARD-REVERSE SHIFT LEVER

1. Unscrew four 4x12 round head screws as shown to remove the Forward-Reverse Shifter Assembly from the dashboard (diagram A).
2. Unplug the two switch sockets from the Forward-Reverse switches (diagram B).
3. Use a flat head screwdriver to pry off the shift lever cover, and then unscrew the 3.5x30 mm flat head screw and remove the shift lever (diagram C).
4. Unscrew the four 4x12 mm round head screws and remove the shift lever assembly.
5. Replace the shift lever assembly with a new one, securing it with the four 4x12 mm flat head screws. Reattach the shift lever using the 3.5x30 flat head screws and snap the shift lever cover back into place. Reconnect the two switch sockets, and reverse steps 1 and 2, above, to finish reinstalling the shift lever.

**NOTE: Ensure the black switch socket plugs into the black switch and the white switch socket plugs into the white switch. Failure to properly connect the plugs will result in the forward and backward directions being reversed.**



## BATTERY CARE AND DISPOSAL

Do not store the battery in temperatures above 75° F (23.5° C) or below 32° F (0° C).



THIS PRODUCT CONTAINS SEALED LEAD ACID BATTERIES WHICH MUST BE RECYCLED IN ACCORDANCE TO YOUR LOCAL AND STATE LAWS. PLEASE CAREFULLY READ AND UNDERSTAND THE FOLLOWING DISPOSAL INSTRUCTIONS:

**DISPOSAL:** This product contains sealed lead acid batteries which must be disposed of or recycled in an environmentally safe manner. Do not dispose of the batteries in your household trash. Do not dispose of the batteries in a fire, as the battery may explode or leak. The incineration, disposal in landfill and/or placing sealed lead acid batteries with household trash is prohibited by law in most areas. Return exhausted batteries to a state or federal approved lead acid battery recycler or check with your local retailer of vehicle batteries. If you live in Florida, Minnesota or various other states, it is prohibited by law to throw away lead-acid batteries in the municipal waste stream. Check local laws for proper handling and recycling of lead-acid batteries.

### WARNING:

- Do not mix old and new batteries. Do not mix alkaline, standard (carbon-zinc), or rechargeable (nickel-cadmium) batteries.
- If a battery leak develops, avoid contact with the leaking acid and place the battery in a plastic bag. See instructions above for proper disposal. If acid comes into contact with skin or eyes, flush with cool water for at least 15 minutes and contact a physician.
- If acid is internally ingested, give water, milk of magnesia or egg whites immediately. Never give emetics or induce vomiting. Call a physician.

### CARE

- Leaving the battery in a discharged condition will ruin it.
- Always remove an exhausted battery from the ride-on toy. Battery leakage and corrosion can damage the ride-on toy.
- Do not store the battery in temperatures above 75° F (23.5° C) or below 32° F (0° C).
- Use only a 24V 7AH battery. Remember to charge the new battery for at least 18 hours before first use.
- Prevent the battery from moving freely inside the battery compartment. Always use the battery retainer to secure the battery in the battery compartment.
- Examine the battery, charger and their connectors for excessive wear or damage each time you charge the battery. If damage is detected, do not use the charger or the battery until you have replaced the worn or damaged part.

## MAINTAINING YOUR RIDE-ON TOY

Occasionally use a lightweight oil to lubricate moving parts such as wheels and the steering linkages.

Park the ride-on toy indoors or cover it with a tarp to protect it from wet weather.

Keep the ride-on toy away from sources of heat, such as stoves and heaters.

Plastic parts may melt.

**ADULTS ONLY:** Recharge the battery after each use. Recharge the battery at least once a month when the ride-on toy is not being used.

**DO NOT** wash the ride-on toy with a hose. **DO NOT** wash the ride-on toy with soap and water.

**DO NOT** drive the ride-on toy in rainy or snowy weather. Water will damage the motor, electrical system, and battery.

**DO NOT** store the ride-on toy, outside in the rain or exposed to the elements. The ride-on toy should be stored inside or covered to protect it from exposure to the elements.

Clean the ride-on toy with a soft, dry cloth. To restore shine to plastic parts, use a non wax furniture polish. **DO NOT** use car wax. **DO NOT** use abrasive cleaners, or cleaners that contain ammonia or isopropyl alcohol.

**DO NOT** drive the ride-on toy in loose dirt, sand or fine gravel, which could damage moving parts, motors or the electric system.

 **WARNING:** Charge the battery before storing your ride-on toy, otherwise the battery will be damaged.

## ABOUT FUSES

Your ride-on toy is equipped with a safety thermal fuse. The fuse is a self-resetting safety device which automatically “trips” and shuts down operation of the ride-on toy if the ride-on toy is overloaded or the operating conditions are too severe. Once a fuse has “tripped,” **do not continuously push on the foot pedal.** The fuse will automatically reset itself after approximately 2 minutes and allow the ride-on toy to resume normal operations. To avoid repeated automatic shut-downs, do not overload the ride-on toy by exceeding the 130 lb (59 kg) maximum weight capacity or by towing anything behind the ride-on toy. Avoid severe driving conditions, such as driving up slopes or running into fixed objects, which can cause the wheels to stop spinning while power is still being supplied to the motor.



# TROUBLESHOOTING GUIDE

G

Problem	Possible Cause	Solution
<b>Ride-on toy does not run</b>	Undercharged battery	<p>Charge the battery. A new battery should have been charged for at least 18 hours before using the ride-on toy for the first time. After first-time use, recharge the battery for at least 12 hours after each use. Never charge the battery longer than 30 hours.</p> <p>Check all connectors. Make sure the battery connector is tightly plugged into the wire connector, and that the charger is plugged into the wall outlet.</p> <p>Make sure that there is power flow to the wall outlet.</p>
	Tripped thermal fuse	<p>The thermal fuse may “trip” and shut down operation if the ride-on toy is overloaded or the driving conditions are too severe. Once a fuse has “tripped”, remove your foot from the pedal and wait approximately 2 minutes before operating the ride-on toy again. To avoid repeated automatic shutdowns, do not overload the ride-on toy by exceeding the 130lb maximum weight capacity or by towing anything behind the ride-on toy. Do not drive up hills or run into fixed objects, which can cause the wheels to stop spinning while power is still being supplied to the motor.</p>
	Electrical switch damage	<p>The electrical switches can become corroded due to exposure to water or moisture, or can jam due to loose dirt, sand or gravel. Please contact our Customer Service Team. <a href="https://dynacraftwheels.com/contact">dynacraftwheels.com/contact</a></p>
	Dead battery	<p>Check all wires and connectors. Make sure the battery connector is tightly plugged into the wire connector and that there are no loose wires around the motor.</p> <p>If your battery is old or if you have not followed Battery Care instructions, your battery may be dead. Replace only with an original 24V 7AH battery. Do not use non-original substitute parts.</p>
	Motor damage	<p>Please contact our Customer Service Team. <a href="https://dynacraftwheels.com/contact">dynacraftwheels.com/contact</a></p>

<b>Problem</b>	<b>Possible Cause</b>	<b>Solution</b>
<b>Ride-on toy was running but suddenly stopped</b>	Loose wires or connectors	Check all wires and connectors. Make sure the battery connector is tightly plugged into the wire connector, and that there are no loose wires around the motor.
	Tripped thermal fuse	The thermal fuse may “trip” and shut down operation if the ride-on toy is overloaded or the driving conditions too severe. Once a fuse has “tripped”, remove your foot from the pedal and wait approximately 2 minutes before operating the ride-on toy again. To avoid repeated automatic shutdowns, do not overload the ride-on toy by exceeding the 130 lb maximum weight capacity or by towing anything behind the ride-on toy. Do not drive up hills or run into fixed objects, which can cause the wheels to stop spinning while power is still being supplied to the motor.
<b>Short run time (Less than 15 minutes per charge)</b>	Undercharged battery	Charge the battery. A new battery should have been charged for at least 18 hours before using the ride-on toy for the first time. After first-time use, recharge the battery for at least 12 hours after each use. Never charge the battery longer than 30 hours.  Check all wires and connectors. Make sure the battery connector is tightly plugged into the wire connector, and that the charger is plugged into the wall.  Make sure that there is power flow to the wall outlet.
	Overcharged battery	Do not charge the battery longer than 30 hours. If you suspect that your battery is damaged as a result of overcharging, change with one new original 24V 7AH battery. Do not use non-original substitute parts.
	Battery is old and will not accept full charge	Even with proper care, a rechargeable battery does not last forever. Average battery life is 1 to 3 years depending on ride-on toy use and use conditions. Replace only with an original 24V 7AH battery. Do not use non-original substitute parts.
	Motor damage	Please contact our Customer Service Team. <a href="http://dynacraftwheels.com/contact">dynacraftwheels.com/contact</a>
	Tripped thermal fuse	The thermal fuse may “trip” and shut down operation if the ride-on toy is overloaded or the driving conditions are too severe. Once a fuse has “tripped”, remove your foot from the pedal and wait approximately 2 minutes before operating the ride-on toy again. To avoid repeated automatic shutdowns, do not overload the ride-on toy by exceeding the 130 lb maximum weight capacity or by towing anything behind the ride-on toy. Do not drive up hills or run into fixed objects, which can cause the wheels to stop spinning while power is still being supplied to the motor.

<b>Problem</b>	<b>Possible Cause</b>	<b>Solution</b>
<b>Ride-on toy runs sluggishly</b>	Undercharged battery	<p>Charge the battery. A new battery should have been charged for at least 18 hours before using the ride-on toy for the first time. After first-time use, recharge the battery for at least 12 hours after each use. Never charge the battery longer than 30 hours. Check all connectors.</p> <p>Make sure the battery connector is tightly plugged into the wire connector, and that the charger is plugged into the wall outlet.</p> <p>Make sure that there is power flow to the wall outlet.</p>
	Battery needs charging	Be sure to charge the battery after each use.
	Ride-on toy is overloaded	<p>Make sure you do not overload the ride-on toy by allowing more than two riders at one time, exceeding the 130 lb maximum weight capacity, or by towing objects behind the ride-on toy. If the ride-on toy is overloaded, the thermal fuse may "trip", and automatically shut down operation of the ride-on toy for approximately 2 minutes. Correct the condition that lead to the overload and adjust the driving conditions to prevent repeated automatic shutdowns.</p>
	Driving conditions too stressful	Use only on level ground.
<b>Sometimes the ride-on toy doesn't run, but other times it does</b>	Loose wire or connector	Check all wires around the motors and all connectors to make sure they are tight.
<b>The battery's thermal fuse constantly "trips", but the ride-on toy is not overloaded and the driving conditions are not severe</b>	Damaged battery	Replace with new battery. Replace only with an original 24V 7AH battery. Do not use non-original substitute parts.
<b>Charger gets warm during use</b>	It is normal for some chargers to get warm during use and is not reason for concern	<p>No action required.</p> <p>If your charger does not get warm during use, it does not mean that it is not working properly.</p>
	Some chargers do not get warm during use	
<b>Battery makes a sizzling or gurgling noise when charging</b>	It is normal for some batteries to make noise and swell slightly while charging and is not reason for concern	<p>No action required.</p> <p>If your battery does not make noise or swell slightly while charging, it does not mean that it is not working properly.</p>

## **FREE WARRANTY UPGRADE WITH REGISTRATION**

**CONSUMER ACTION REQUIRED**  
**[dynacraftwheels.com/register](https://dynacraftwheels.com/register)**

### **UPGRADE YOUR WARRANTY WITH PRODUCT REGISTRATION**

Free warranty upgrade with online registration at [dynacraftwheels.com/register](https://dynacraftwheels.com/register).

We respect your privacy. Any information collected by Dynacraft Wheels will never be shared with any other company or organization. See Dynacraft's privacy policy for further information: [dynacraftwheels.com/dynacraft-privacy-policy](https://dynacraftwheels.com/dynacraft-privacy-policy).

### **BENEFITS OF SIGNING UP FOR FREE EXTENDED WARRANTY**

- Simple, quick sign up at [dynacraftwheels.com/register](https://dynacraftwheels.com/register) (proof of purchase required).
- Extra 6 months battery coverage from date of purchase.
- Extra 60 days of coverage on electric ride-on parts subject to wear and tear, from date of purchase.
- Transportation charges on replacement parts waived for the Limited Warranty period. See Limited Warranty for details.

For further inquiries call Customer Service at 1-800-551-0032 or visit [dynacraftwheels.com/contact](https://dynacraftwheels.com/contact)

# LIMITED WARRANTY

This Limited Warranty ("Warranty") extends only to the original retail purchaser, who must provide proof of purchase to validate any claim. As noted below, certain aspects of this Warranty can be extended free of charge to original retailer purchasers who also register their product using the provided online registration form. Proper registration via Dynacraft's online registration form is the only way to obtain these noted extensions. This Warranty is not transferable to anyone else and is the only warranty for your Dynacraft product, to the extent permitted by law. No other express or implied warranty is given, and except to the extent prohibited by applicable law, any implied warranty of merchantability or fitness for a particular purpose on this product is hereby disclaimed. Part or model specifications are subject to change without notice. By purchasing and using your new electric ride-on toy you agree to be bound by the terms of this Warranty as set out below. This Warranty is subject to change without notice.

**What does this Limited Warranty cover?** This Warranty covers all parts of the electric ride-on toy to be free from defects in workmanship and materials. This Warranty is only effective if: the electric ride-on toy is used under normal conditions for its intended purposes, by a person that properly fits and is capable of controlling the vehicle; and the electric ride-on toy receives all necessary maintenance and adjustments.

**What is not covered by this Limited Warranty?** This Warranty does not include labor and transportation charges. You, the original purchaser will be responsible for labor or transportation charges associated with the repair or replacement of any parts found to be eligible for warranty coverage. Those original purchasers who qualify for the extended version of this Warranty will have transportation charges waived for the duration of the Limited Warranty period. This warranty does not cover damage caused by normal wear and tear, crash collision, misuse, abuse, neglect, improper assembly, improper maintenance, lack of maintenance, alteration, or any similar damage to the ride-on toy.

This Warranty will be void if the electric ride-on toy is ever: installed with a motor or modified in any other way; rented or used for commercial purposes; or used in a manner contrary to the instructions in the Owner's Manual included with this product. Dynacraft will not be liable for incidental or consequential loss or damage, due directly or indirectly from use of this product.

**For how long does this Limited Warranty last?** The ride-on toy, with the exception of the battery and cosmetic parts as described below, is warranted against defective materials or workmanship for a period of one year from the original date of purchase.

The battery is warranted against defective materials or workmanship for a period of six months from the original date of purchase. For those original purchasers who qualify for the extended version of this Warranty, the battery is warranted for a period of one year from date of purchase.

Parts and accessories considered to be cosmetic and not essential for the operation of this electric ride-on toy as well as those parts and accessories subject to normal wear and tear are warranted against defective materials or workmanship for a period of 30 days from the original date of purchase. An original receipt confirming the original date of purchase is required to validate your warranty. For those original purchasers who qualify for the extended version of this Warranty, cosmetic/wear-and-tear components are covered for 90 days from date of purchase. Parts and accessories considered cosmetic include, but are not limited to: mirrors; doors; fenders; stickers/decals; decorations/accessories; and fur Coverings (for plush animal electric ride on toys). Parts and accessories subject to wear and tear include, but are not limited to wheels and wheel components.

**What will Dynacraft do to honor this Limited Warranty?** Dynacraft will replace any component or battery confirmed to be defective and eligible for warranty replacement with the same or a functionally equivalent part. You, the original purchaser will be responsible for any and all labor or transportation charges connected with the replacement or repair of the ride-on toy or any covered parts.

**How do you make a claim under this Limited Warranty?** Warranty claims should be submitted via Dynacraft's online portal at [dyncraftwheels.com/contact](https://dyncraftwheels.com/contact). Please have your proof of purchase available before contacting to validate your claim. Products can be registered at [dyncraftwheels.com/register](https://dyncraftwheels.com/register).

**DO NOT RETURN THIS ITEM TO THE STORE**  
**CONTACT DYNACRAFT CUSTOMER SERVICE FOR ASSISTANCE**

**[dyncraftwheels.com/contact](https://dyncraftwheels.com/contact)**

or 1-800-551-0032

Please have the following information available:

**Model Number**

Example: 8000-00

**Production Date**

Example: MM.DD.YYYY

**Serial Number**

Example: DXXXX000000000

This information is provided on a white sticker located on your unit and is required to help us handle your request.

Please do not remove the sticker from your unit.



**DYNACRAFT®**

**Dynacraft BSC, Inc.**  
1501 Crossgate Road  
Port Wentworth, GA 31407  
Call Toll Free 1-800-551-0032  
**[dyncraftwheels.com](https://dyncraftwheels.com)**  
©2024 All rights reserved

2024 Printed in China

**BM233**