

OWG4

LED Wall Pack

Product Description

The OWG4 LED Wall Pack represents a modernized version of the traditional wall pack design, featuring selectable CCT (correlated color temperature) and an optional adjustable lumens (wattage) setting. With an impressive output of up to 135 lumens per watt, the OWG4 provides powerful and evenly distributed light. Its installation is hassle-free, allowing attachment to walls or direct mounting on a J-Box using its separable hinged backplate. Internal switches enable users to customize the CCT within the range of 3000/4000/5000K and an option to adjust the wattage or the lumen output to high, medium, or low settings. Equipped with three knockouts for through-wiring or sensor additions, the OWG4 is an excellent choice for security and perimeter lighting. It comes standard with an integral photocell, which can be enabled as needed.

Construction

- Die-cast aluminum housing
- Three (3) ½" knockouts for conduit feed or sensors
- Separable hinged backplate for easy installation and maintenance
- Stainless steel hardware
- Fine-textured, UV-stabilized powder coat bronze or white finish

Optical System

- Tempered clear prismatic glass to maximize lumen output
- LED array mounting reduces glare for optimum distribution.
- Selectable models use a dual emitter array that enables CCT selection of 3000K/4000K/5000K
- >80 CRI to improve safety and color definition in public places.

Electrical

- Thermally-protected, high-efficiency driver
- Input voltage of 120-277VAC
- Power Factor = >0.9
- THD = ≤20%
- 0-10V dimming
- Optional sensor socket installation available
- Optional Selectable Wattage (100/80/60W)
- Operating temperature rating of -40°F to 122°F (-40°C to 50°C)
- Emergency Option at operating temperature of (0°C to 45°C)
- 4kV surge protection standard
- Optional internal emergency back-up

Controls

- An integral photocell is standard, with the ability to enable it if desired.

Mounting and installation

- Fixture mounts directly to J-Box and walls with fasteners (not furnished)
- Wiring possible through backplate or knockouts
- Separable hinged backplate to allow for easy mounting
- For installations where power surge may be possible, NICOR recommends installing additional surge protection at the electrical distribution panel

Listings

- LM-79, LM-80 testing performed in accordance with IESNA standards
- cULus 1598 Listed for wet locations
- IP65 Rated
- Meets FCC Part 15, Subpart B, Class B standards for conducted and radiated emissions
- RoHS Compliant
- TM-21 Reported L70(9k) life >50,000 hours
- DLC Premium

Warranty

Project

Catalog

Type

Date



OWG4
LED Wall Pack
Selectable CCT
Optional Selectable Wattage



Ordering

Ordering Information

Example: OWG4100SUNVSBZ

Series	Version	Wattage	Voltage	CCTs-Select	Finish	Sensor Socket	Emergency
OWG	4	100 (100W only)	UNV (120-277)	S (3/4/5K)	BZ (Bronze)	_ (None)	_ (None)
		100S (100/80/60W)			WH (White)	S (12V 3.5mm Socket)	E08 (8W EM back up)

Specifications and dimensions subject to change without notice.

Motion Sensors - Accessories

Low Voltage White Adjustable Arm	H12VADJARM1WH
Low Voltage Bronze Adjustable Arm	H12V3ADJARM1PBG
Microwave Motion Sensor White	H12VSENSORMW
Microwave Motion Sensor Bronze	H12V3SENSORMW1PBG
Remote Control for H12V Sensors	H12V2REMOTE



H12VADJARM1WH



H12VSENSORMW



H12V3ADJARM1PBG



H12V3SENSORMW1PBG

Both arm and sensor must be purchased in order to have sensor face the proper direction.

Performance Data

Performance Data (CCT Select only)

Wattage	CCT	Lumens	Watts	Lumens/Watt	BUG Rating
OWG4 (100W) non-selectable	3000	13021	97.9	133	B1-U4-G4
	4000	13146	97.9	134	
	5000	13231	97.9	135	

Recommended 0-10VDC Dimmers*

Lutron NTSTV
Lutron DVSTV
Cooper SF10P
Legrand RH4FBL3PW

*Not a complete list. Check compatibility before installation.

Performance Data (Wattage/CCT Select)

Wattage	CCT	Lumens	Watts	Lumens/Watt	BUG Rating
OWG4100S (High; 100W)	3000	13021	97.9	133	B1-U4-G4
	4000	13146	97.9	134	
	5000	13231	97.9	135	
OWG4100S (Medium; 80W)	3000	10417	78.3	133	B1-U3-G4
	4000	10517	78.3	134	
	5000	10584	78.3	135	
OWG4100S (Low; 60W)	3000	7813	58.74	133	B1-U3-G3
	4000	7888	58.74	134	
	5000	7929	58.74	135	

Fixture tested per LM-79-08. Photometric data is of the performance of a representative fixture. Results may vary in the field.

Performance Data

OWG4100 3000K

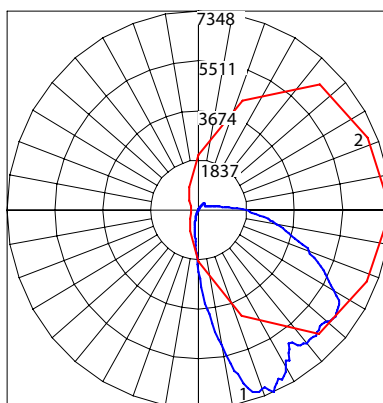
Input Voltage (VAC)	120
System Level Power (W)	97.9
Delivered Lumens (Lm)	13021
System Efficacy (Lm/W)	132.9
Correlated Color Temp (K)	3081
Color Rendering Index (CRI)	82
Beam Angle (0)	92.6
Beam Angle (90)	70.7
Spacing Criteria (0)	2.94
Spacing Criteria (90)	1.20
BUG Rating	B1-U4-G4

Intensity Summary (Candle Power)

Angle	Mean CP
0	2310
5	3664
15	6211
25	7106
35	6000
45	6042
55	5975
65	5059
75	3517
85	2182
90	1579

Zonal Lumen Summary

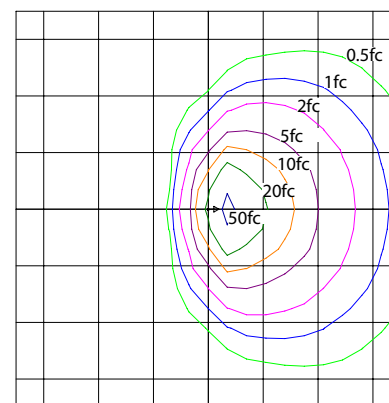
Zone	Lumens	% of Luminaire
0-30	2528	19.4%
0-40	4324	33.2%
0-60	8312	63.8%
0-90	12117	93.1%
90-180	904	6.9%
0-180	13021	100%



1 - Vertical Plane Through Horizontal Angle
2 - Horizontal Cone Through Vertical Angle

CCT Data Multiplier

3000K	1.00
4000K	1.010
5000K	1.016



10' Mounting Height (1 square = 100 sq ft)

Performance Data

OWG4100S 3000K

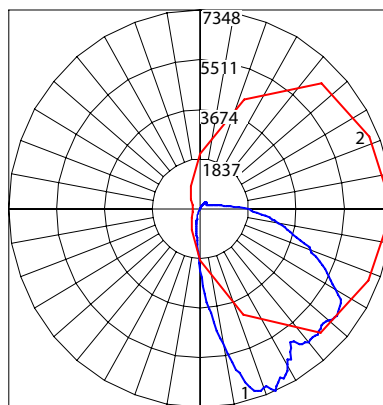
Input Voltage (VAC)	120
System Level Power (W)	97.9
Delivered Lumens (Lm)	13021
System Efficacy (Lm/W)	132.9
Correlated Color Temp (K)	3081
Color Rendering Index (CRI)	82
Beam Angle (0)	92.6
Beam Angle (90)	70.7
Spacing Criteria (0)	2.94
Spacing Criteria (90)	1.20
BUG Rating	B1-U4-G4

Intensity Summary (Candle Power)

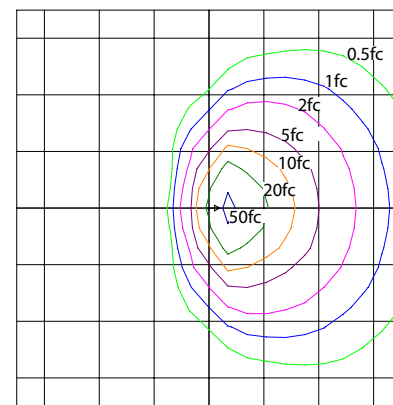
Angle	Mean CP
0	2310
5	3664
15	6211
25	7106
35	6000
45	6042
55	5975
65	5059
75	3517
85	2182
90	1579

Zonal Lumen Summary

Zone	Lumens	% of Luminaire
0-30	2528	19.4%
0-40	4324	33.2%
0-60	8312	63.8%
0-90	12117	93.1%
90-180	904	6.9%
0-180	13021	100%



1 - Vertical Plane Through Horizontal Angle
2 - Horizontal Cone Through Vertical Angle



10' Mounting Height (1 square = 100 sq ft)

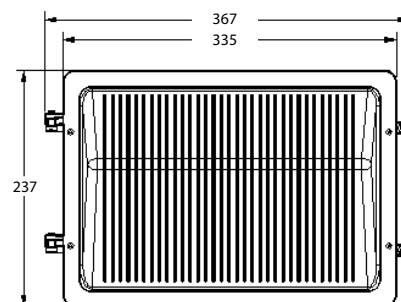
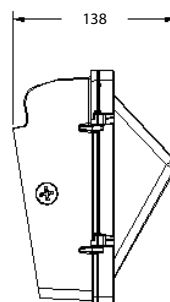
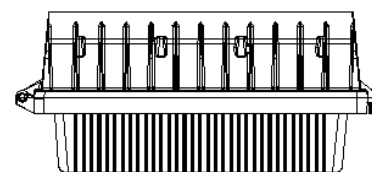
Data Multiplier

	3000K	4000K	5000K
100W	1.000	1.010	1.016
80W	0.800	0.808	0.813
60W	0.600	0.606	0.609

Dimensions

Dimensions

Series	Overall Length (OL)	Length (L)	Width (W)	Height (H)
OWG4100(S)	14.45 in (367 mm)	13.19 in (335 mm)	5.43 in (138mm)	9.33 in (237mm)



This device complies with part 15 of the FCC Rules. Operation is subject to the following two conditions: (1) This device may not cause harmful interference, and (2) this device must accept any interference received, including interference that may cause undesired operation.

NOTE: This equipment has been tested and found to comply with the limits for a Class A digital device, pursuant to part 15 of the FCC Rules. These limits are designed to provide reasonable protection against harmful interference when the equipment is operated in a commercial environment. This equipment generates, uses, and can radiate radio frequency energy and, if not installed and used in accordance with the instruction manual, may cause harmful interference to radio communications. Operation of this equipment in a residential area is likely to cause harmful interference in which case the user will be required to correct the interference at his own expense.