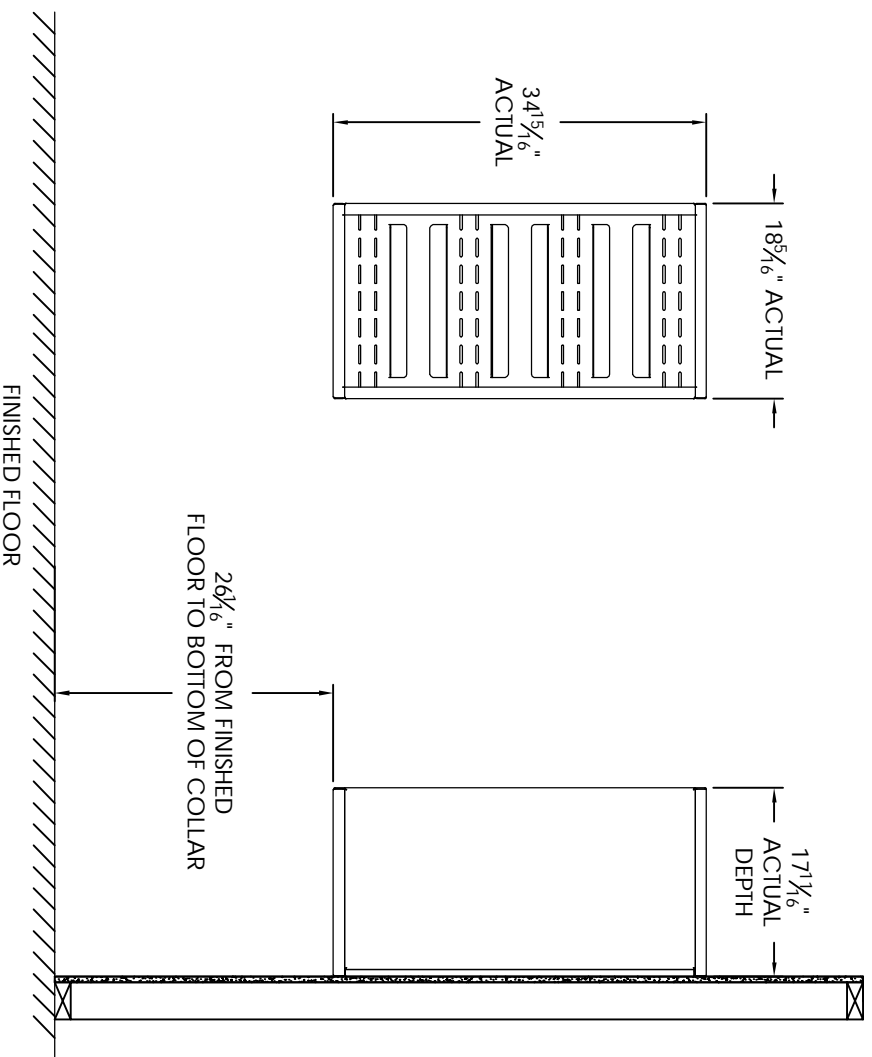


# Versatile™ 4C Surface Mount Collar, SM09S



- Notes:
1. Designed to mount Florence Versatile™ 4C mailbox single column 9-High Suite modules (sold separately).
  2. For use with front loading modules only.

PRODUCT SERIES: VERSATILE™ 4C SURFACE MOUNT COLLAR

**AF FLORENCE**  
**manufacturing company**

5935 Corporate Drive • Manhattan, KS 66503  
 www.florencemailboxes.com • (800) 275-1747

A GIBRALTAR INDUSTRIES COMPANY

MODEL	SM09S	REV	B
SCALE	NONE	LAST REV DATE	7/02/2014
DRAWING NUMBER	SM09SCS	DRAWN BY	TNS