

Installation Instructions for Tresco® Lighting's COB (Chip-On-Board) and SMD LED FlexTape® light systems, featuring the ClearView DIY clear connectors. The ClearView clear connectors allow the LED light to shine through the transparent body of the connectors.

Installation Instructions

C.O.B. & SMD LED FlexTapes

12VDC and 24VDC

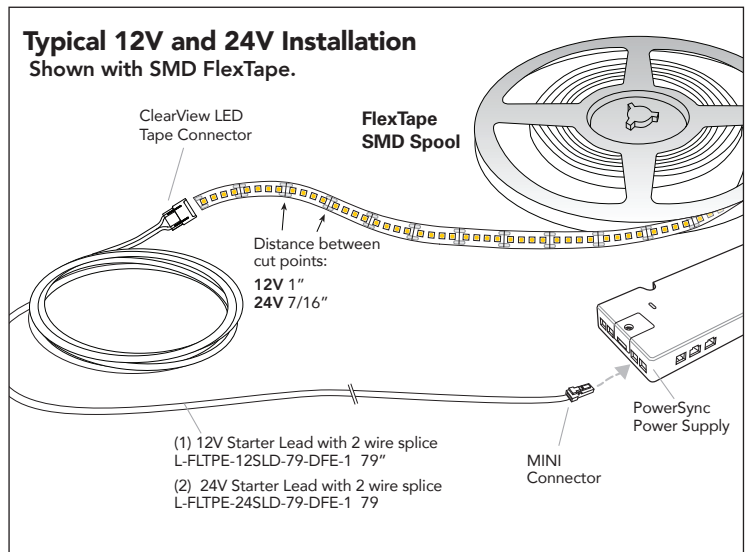
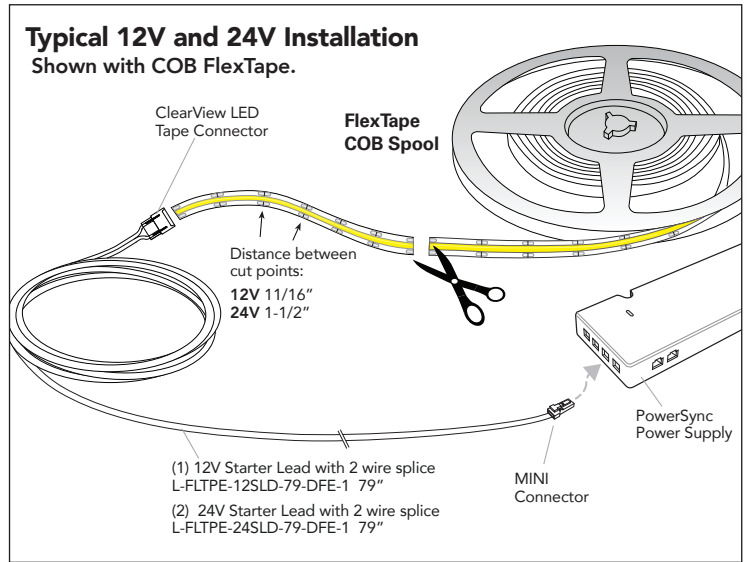
Main Light System Parts:

| COB FlexTape® | | |
|---|------------------------|---------|
| (1) COB LED FlexTape Spool (12V) | L-FLXCOB12-XV-1 | 13 ft |
| (1) COB LED FlexTape Spool (24V) | L-FLXCOB24-XU-1 | 16.4 ft |
| | | |
| (1) 12V Starter Lead with 2 wire splice | L-FLTPE-12SLD-79-DFE-1 | 79" |
| (1) 24V Starter Lead with 2 wire splice | L-FLTPE-24SLD-79-DFE-1 | |

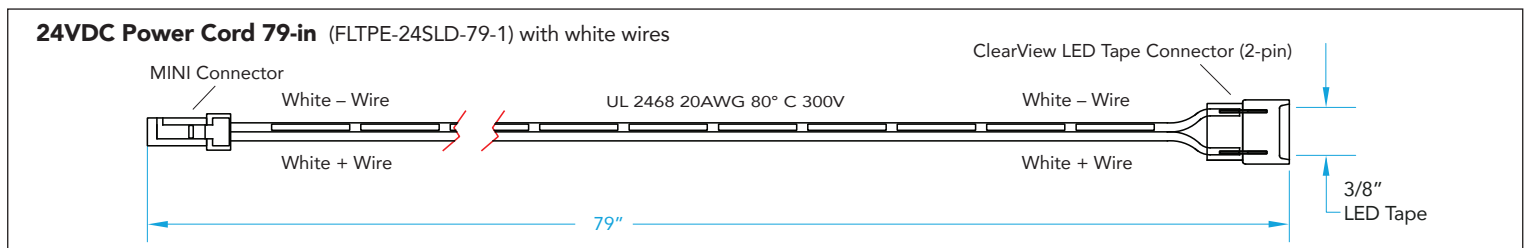
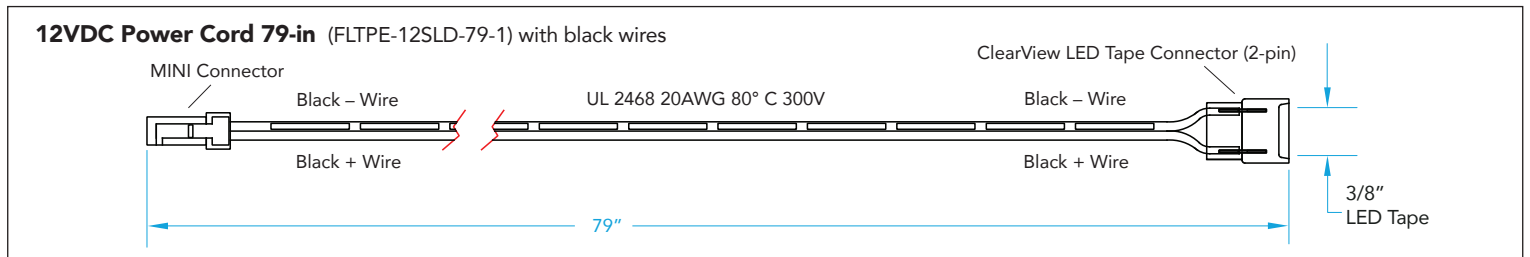
| SMD LED FlexTape® Spool (12V) 122 lm/W / 110° beamspread / CRI 90 | | | | |
|---|------------|-----|---------------------|--------------|
| PWR | Lumens/Ft. | CCT | Part No. | Spool Length |
| Low 1.6W | 175 | 30K | L-FLSMD-12LO30K-20S | 20 ft |
| | | 35K | L-FLSMD-12LO35K-20S | |
| | | 50K | L-FLSMD-12LO50K-20S | |
| Med. 3.2W | 290 | 30K | L-FLSMD-12MD30K-16S | 16 ft |
| | | 35K | L-FLSMD-12MD35K-16S | |
| | | 50K | L-FLSMD-12MD50K-16S | |
| High 4.6W | 440 | 30K | L-FLSMD-12HI30K-13S | 13 ft |
| | | 35K | L-FLSMD-12HI35K-13S | |
| | | 50K | L-FLSMD-12HI50K-13S | |

| SMD LED FlexTape® Spool (24V) 137 lm/W / 110° beamspread / CRI 90 | | | | |
|---|------------|-----|---------------------|--------------|
| PWR | Lumens/Ft. | CCT | Part No. | Spool Length |
| Low 1.3W | 188 | 27K | L-FLSMD-24LO27K-20S | 20 ft |
| | | 30K | L-FLSMD-24LO30K-20S | |
| | | 35K | L-FLSMD-24LO35K-20S | |
| | | 50K | L-FLSMD-24LO50K-20S | |
| | | 65K | L-FLSMD-24LO65K-20S | |
| Med. 3.2W | 358 | 27K | L-FLSMD-24MD27K-16S | 16 ft |
| | | 30K | L-FLSMD-24MD30K-16S | |
| | | 35K | L-FLSMD-24MD35K-16S | |
| | | 50K | L-FLSMD-24MD50K-16S | |
| | | 65K | L-FLSMD-24MD65K-16S | |
| High 4.1W | 534 | 27K | L-FLSMD-24HI27K-13S | 13 ft |
| | | 30K | L-FLSMD-24HI30K-13S | |
| | | 35K | L-FLSMD-24HI35K-13S | |
| | | 50K | L-FLSMD-24HI50K-13S | |
| | | 65K | L-FLSMD-24HI65K-13S | |

| Power Supplies |
|--|
| (1) PowerSync Power Supply: 12VDC 24W, 36W or 60W max, or 24VDC 24W, 36W, 60W or 96W max |

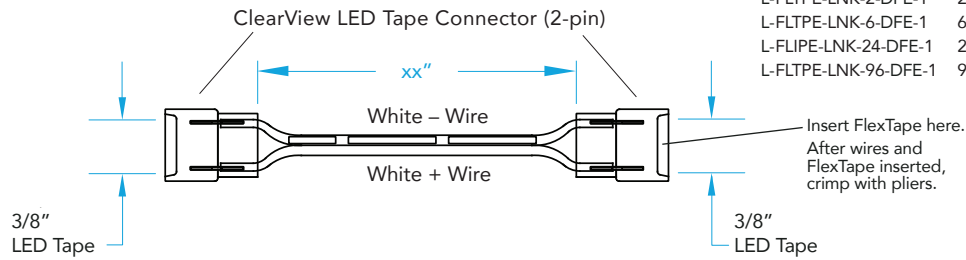


12V & 24V FlexTape® Cords



(Continued from page 1)

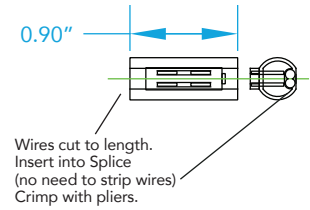
FlexTape® to FlexTape Link Cords plus 24" and 96" with Wire Splice
 Universal for 12VDC or 24VDC installations



- Available in 4 lengths:
- L-FLTPE-LNK-2-DFE-1 2"
 - L-FLTPE-LNK-6-DFE-1 6"
 - L-FLTPE-LNK-24-DFE-1 24"
 - L-FLTPE-LNK-96-DFE-1 96"

Power Connector 2 wire splice
 (L-PWCON-2SPL-DFE-1)

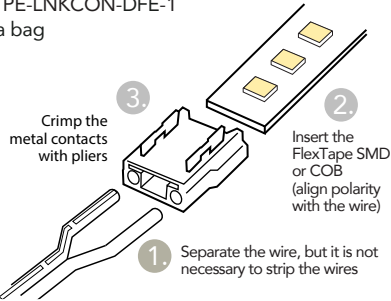
1 clear wire splice provided in 24" & 96" Link Cord bags.



12V and 24V FlexTape® Clear Connectors - These no solder, clear connectors work with all COB and SMD FlexTape 12VDC and 24VDC.

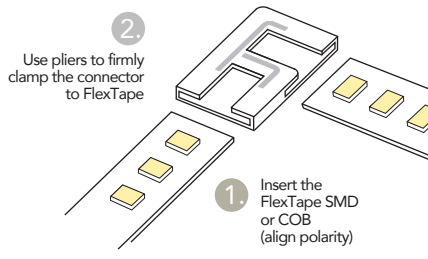
FlexTape® to Link Cord Connector

L-FLTPE-LNKCON-DFE-1
 5 in a bag



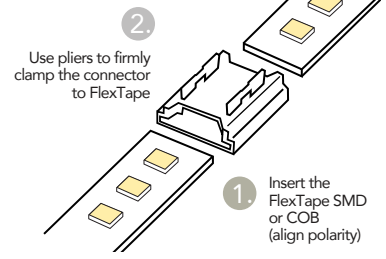
FlexTape® 90° Connector

L-FLTPE-CON90-DFE-1
 5 in a bag



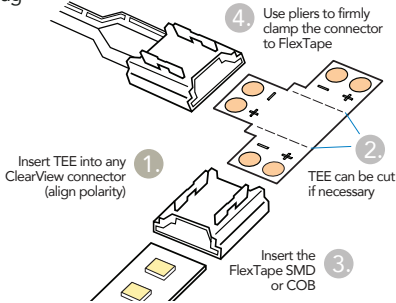
FlexTape® Back-to-Back Connector

L-FLTPE-BTB-DFE-1
 5 in a bag



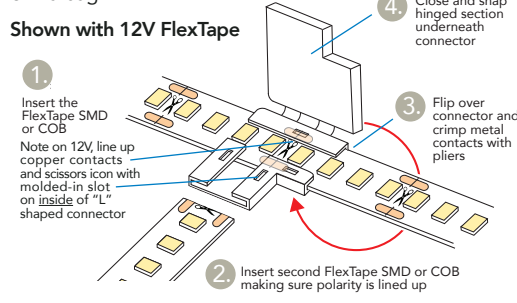
FlexTape® Tee Connector

L-FLTPE-TEE-DFE-1
 5 in a bag

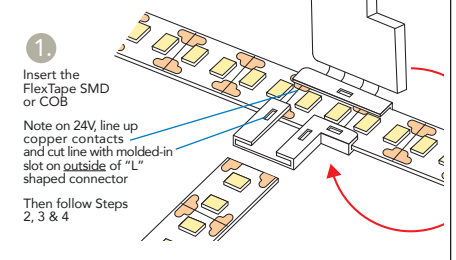


FlexTape® Clear Tee Connector

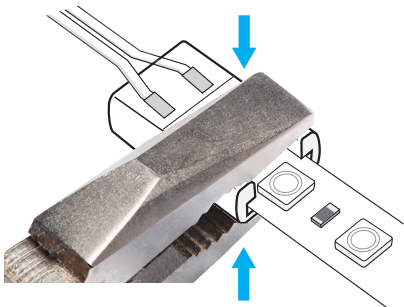
L-FLTPE-CLRTEE-DFE-1
 5 in a bag



Shown with 24V FlexTape



Use pliers to clamp down connectors firmly and carefully. Be careful not to damage LEDs.



Save this sheet for future reference.
 For technical assistance, call 1-800-227-1171



Tresco® Lighting
 12400 Earl Jones Way
 Louisville, KY 40299

Tel: 800-227-1171
 Fax: 502-491-2215

Email: cservice@trescolighting.com
 Web: www.trescolighting.com

