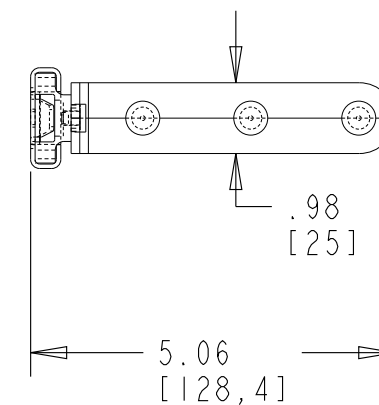
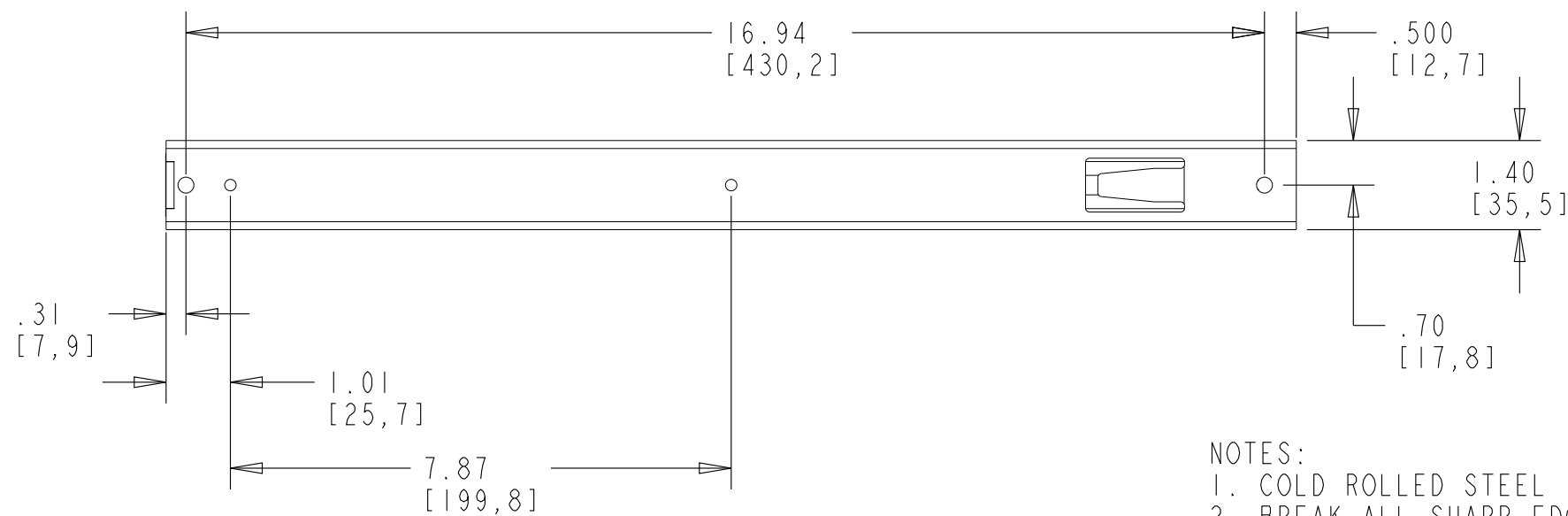


TBC-17H OPEN POSITION



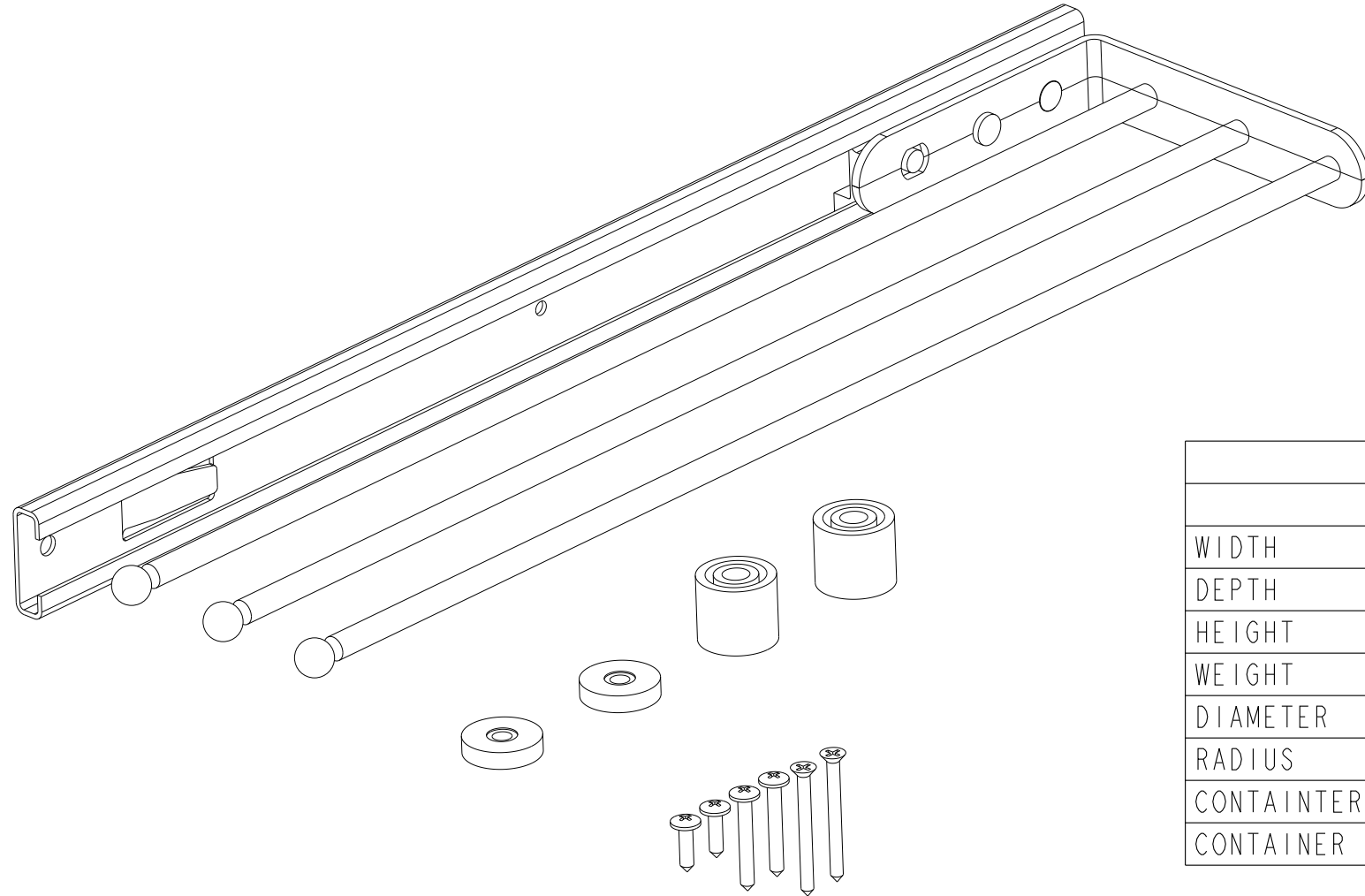
- NOTES:
 1. COLD ROLLED STEEL
 2. BREAK ALL SHARP EDGES.
 3. FINISH: CHROME
 4. CRITICAL TO QUALITY SYMBOL

CUSTOMER DRAWING

This drawing is the property of Rev-A-Shelf (RAS) and is disclosed in confidence to the extent its subject matter is original to RAS. Any vendor receiving this drawing from RAS shall hold and use this drawing for the sole benefit of RAS and shall not disclose it to, or use or reproduce it for any third party, or perform any act adverse to the interest of RAS with respect to this drawing without the express written permission of RAS. Vendors shall not revise any physical, dimensional or performance characteristic unless authorized by Rev-A-Shelf Engineering.

REV.	DATE	BY	DESCRIPTION OF CHANGE

INCH [MM]	AMERICAN PROJECTION 	BY	DATE	REV-A-SHELF, INC.	
		BKT	2/21/20		
DRAWN				SIZE B	
TOLERANCES MAT. DEC. (WOOD) .XX ±.03 [.8mm] (OTHER) .XX ±.02 [.5mm] (ALL) .XXX ±.005 [.13 mm] FRACTIONS ±1/32 [.8 mm]				DRAWING NO. 563-47_CUST	SCALE 0.375
MATERIAL				PART NO. 563-47	SHEET OF 1 2
FINISH					



PART DIMENSIONS		
	MIN	MAX
WIDTH	5.06	
DEPTH	17.76	
HEIGHT	1.40	
WEIGHT		
DIAMETER		
RADIUS		
CONTAINER CAPACITY		
CONTAINER UOM		

MIN CABINET OPENING	
WIDTH	6.00
DEPTH	18.00
HEIGHT	2.00

PRODUCT MAX WEIGHT RATING

SLIDE SPECIFICATIONS			
		SLIDE EXTENSION	FULL
SLIDE CLOSING	NORMAL	SLIDE LENGTH	451.10 MM
SLIDE MOUNTING	SIDE	SLIDE FINISH	ZINC

CUSTOMER DRAWING

This drawing is the property of Rev-A-Shelf (RAS) and is disclosed in confidence to the extent its subject matter is original to RAS. Any vendor receiving this drawing from RAS shall hold and use this drawing for the sole benefit of RAS and shall not disclose it to, or use or reproduce it for any third party, or perform any act adverse to the interest of RAS with respect to this drawing without the express written permission of RAS. Vendors shall not revise any physical, dimensional or performance characteristic unless authorized by Rev-A-Shelf Engineering.

REV.	DATE	BY	DESCRIPTION OF CHANGE

INCH [MM]	AMERICAN PROJECTION 	DRAWN	BY	DATE	REV-A-SHELF, INC.	
			BKT	2/21/20		
		MATERIAL		SIZE	3-PRONG PULLOUT TOWEL HOLDER	
		FINISH		DRAWING NO.	563-47_CUST	
		TOLERANCES MAT. DEC. (WOOD) .XX ±.03 [.8mm] (OTHER) .XX ±.02 [.5mm] (ALL) .XXX ±.005 [.13 mm] FRACTIONS ±1/32 [.8 mm]		ANGLES ±1/2°	SCALE	0.500
				PART NO.	563-47	
				SHEET OF	2 2	