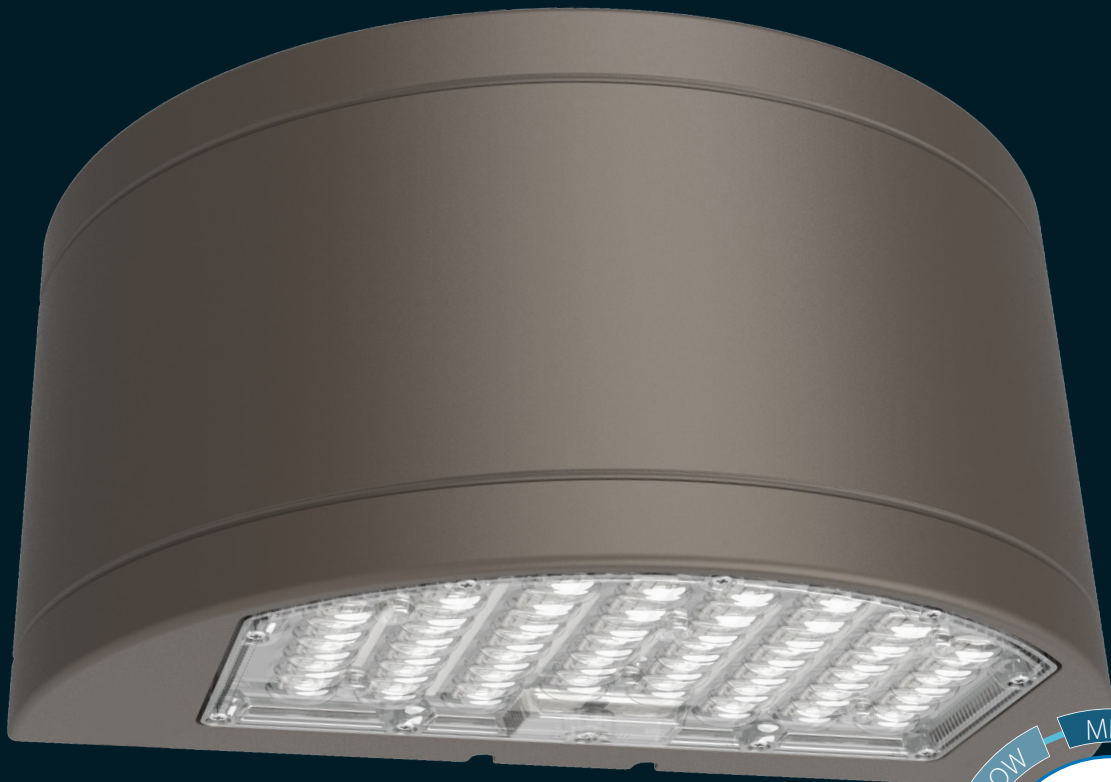


**NICOR<sup>®</sup>**



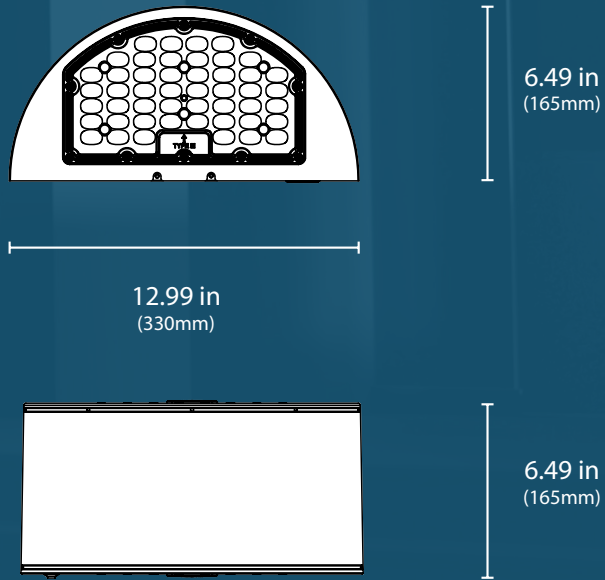
# **OWT** Half Moon Wall Pack

# OWT

## Half Moon Wall Pack

The half moon LED Wall Pack is an architectural style wall pack with customizable performance settings. It is easy to install on walls or directly on a J-Box with its mounting bracket. An internal switch offers the ability to adjust the wattage, CCT, and optional uplight operation for full light distribution. This curved wall pack features an integrated photocell and knockout for alternative sensor installation. The OWT is suitable for perimeter lighting as well as building entrances, walkways, or other commercial spaces where general-purpose lighting is desired.

### Dimensions



## FEATURES



### Flexible Distribution

Choose between Full distribution (80% down/20% up) or Down-only distribution (100% down) to suit your application

### Waterproof Performance

Type III optic with a tight rubber seal and glass lens for superior waterproof durability

### Easy Sensor Installation

Accessible knockout location for sensor placement

### Select the Perfect Light

The OWT Half Moon Wall Pack features selectable wattage and color temperature options via an integrated switch located on the backside.



Ordering Information										Example: OWT1080SUS8BZ3	
Series	Version	Wattage	Voltage	CCTs	CRI	Finish	Optic	Sensor Socket	Emergency		
OWT	1	080S (48/64/80W)	U (120-277V)	S (3K/4K/5K)	8 (80 CRI)	BZ (Bronze)	3 (Type III)	_ (None)	_ (None)		
							4 (Type IV)	S (Socket)*	E (9W)		
							5 (Type V)				

See spec-sheet for additional ordering information. \* Sensor socket versions of the product are not DLC listed.



LIT-OWT-10PK  
20250129

©20250129 NICOR® • ALL RIGHTS RESERVED

## Warehouse Locations

Albuquerque, NM  
Buford, GA  
Roseville, CA  
T. 800-821-6283 F. 800-892-8393



2200 Midtown Place NE Albuquerque, NM 87107 USA | [nicorlighting.com](http://nicorlighting.com)