

# EVOLVE

## Constitution EPCO Series

LED Post Top Lighting



Project Name \_\_\_\_\_

Date \_\_\_\_\_ Type \_\_\_\_\_

Notes \_\_\_\_\_

### GLI Brands Utility Roadway Representatives Exclusively

- Reliable, uniform, glare free illumination
- Types I, II, III, IV Wide, V, V Square and V Wide distributions
- Amber, 3000K, 4000K, 5000K CCT
- 0-10V dimming ready
- Integral Surge protection: 10k in parallel, 20k in series

### CONSTRUCTION

<b>Housing:</b>	Aluminum 360 alloy
<b>Lens:</b>	LED engine, TIR optics, gasket and bezel plate
<b>Paint:</b>	Cast Aluminum, Black, Dark Bronze, RAL & Customer colors available
<b>Weight:</b>	29lbs. (13.2kg)

### OPTICAL SYSTEM

<b>Lumens:</b>	2,200 – 7,700
<b>Distribution:</b>	Type I, Type II, Type III, Type IV Wide, Type V Square & Type V Wide
<b>Efficacy:</b>	29-125.5 LPW
<b>CCT:</b>	Amber, 3000K, 4000K, & 5000K
<b>CRI (Min):</b>	70

### ELECTRICAL

<b>Input Voltage:</b>	120-277V
<b>Input Frequency:</b>	50/60Hz
<b>Power Factor:</b>	>0.95 @ Full Load 120-277V
<b>Total Harmonic Distortion:</b>	<10% @ Full Load 120-277V

### SURGE PROTECTION\*

Standard	Optional
10kV/5kA	20kV/10kA

\*Per ANSI C136.2-2015

### WARRANTY

5 Year (Standard)

10 Year (Optional)

### LUMEN MAINTENANCE

Projected Lxx per IES TM-21 at 25°C

SKU	LXX(10K) @ Hours		
	25,000 HR	50,000 HR	60,000 HR
<b>EPCO</b>	L98	L95	L94

Note: Projected LXX based on LM80 (> 10,000 hour testing). Accepted Industry tolerances apply to initial luminous flux and lumen maintenance measurements.

### AMBIENT TEMPERATURE FACTOR

Ambient Temp (°C)	Initial Flux Factor	Ambient Temp (°C)	Initial Flux Factor
10	1.02	30	0.99
20	1.01	40	0.98
25	1.00		

### RATINGS

<b>Operating Temperature:</b>	-30°C to 40°C
<b>Vibration:</b>	Available upon request
<b>LM-79:</b>	Available upon request
<b>EPA:</b>	1.33

### CONTROLS

<b>Dimming:</b>	Standard - 0-10V
<b>Sensors:</b>	Finial Location - Motion, Daylight Photo Control

## EPCO 02

PROD. ID	GEN.	VOLTAGE	LUMEN OUTPUT	DISTRIBUTION	LENS	CCT	CONTROLS PER ANSI C136.41	MOUNTING	COLOR	OPTIONS
<b>E = Evolve</b>	<b>02 =</b> 2nd Gen	<b>0 =</b> 120-277V	<b>295 =</b> 4723 - 5632 No Lens, 3471 - 4128 Clear Lens, 2243 - 2473 Diffused Lens	<b>A =</b> Type I	<b>NL =</b> No Lens	<b>AM =</b> Amber- 595nm Peak	<b>1 =</b> None	<b>AD3 =</b> Adapter for 3" pole	<b>BLCK =</b> Black	<b>HS =</b> House Side Shield
<b>P = Post Top</b>			<b>525 =</b> 4884 - 5775 No Lens, 5686 - 6780 Clear Lens, 3675 - 4050 Diffused Lens	<b>B =</b> Type II	<b>CL =</b> Clear Lens	<b>30 =</b> 3000K	<b>A =</b> 7-Pin Receptacle	<b>AD5 =</b> Adapter for 5" Pole	<b>DKBZ =</b> Dark Bronze	<b>R =</b> Secondary 10kV/5kA SPD
<b>CO =</b> <b>Constitution</b>			<b>615 =</b> 5528 - 6592 No Lens, 6491 - 7740 Clear Lens, 4195 - 4624 Diffused Lens	<b>C =</b> Type III*	<b>DL =</b> Diffused Lens	<b>40 =</b> 4000K	<b>D =</b> 7-Pin Receptacle with Shorting Cap			<b>T =</b> Secondary 20kV/10kA SPD
				<b>E =</b> Type IV, Wide		<b>50 =</b> 5000K	<b>E =</b> 7 Pin Receptacle with Long Life non- Dimming PE Control			<b>XXX =</b> Special Options
				<b>F =</b> Type V, Square						
				<b>G =</b> Type V, Wide*						

\*Diffused lens only offered in C and G (DISTRIBUTION)

For additional information on EPCO IES files, please click the following link:

[EPCO IES Files](#)

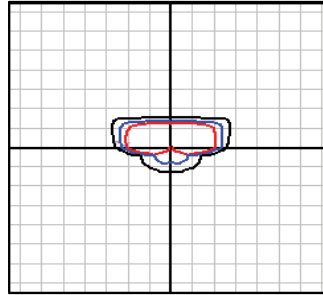
### PERFORMANCE DATA

LUMEN OUTPUT	REFRACTOR		TYPICAL INITIAL LUMENS			BUG RATINGS		
	DIST CODE	CODE	3000K	4000K	5000K	3000K	4000K	5000K
295	A	NL	3807	3960	4128	B1-U0-G1	B1-U0-G1	B1-U0-G1
295	B		3596	3740	3899	B1-U0-G1	B1-U0-G1	B1-U0-G1
295	C		3471	3611	3764	B1-U0-G1	B1-U0-G1	B1-U0-G1
295	E		3501	3642	3796	B1-U0-G1	B1-U0-G1	B1-U0-G1
295	F		3818	3971	4140	B2-U0-G1	B2-U0-G1	B2-U0-G1
295	G		3529	3670	3826	B2-U0-G1	B2-U0-G1	B2-U0-G1
295	A		CL	3242	3373	3516	B1-U0-G1	B1-U0-G1
295	B	3062		3186	3321	B1-U0-G1	B1-U0-G1	B1-U0-G1
295	C	2957		3075	3206	B1-U0-G1	B1-U0-G1	B1-U0-G1
295	E	2982		3102	3233	B1-U0-G1	B1-U0-G1	B1-U0-G1
295	F	3252		3382	3526	B2-U0-G1	B2-U0-G1	B2-U0-G1
295	G	3005		3126	3259	B2-U0-G1	B2-U0-G1	B2-U0-G1
295	C	DL		2243	2334	2433	B1-U0-G1	B1-U0-G1
295	G		2280	2372	2473	B1-U0-G1	B1-U0-G1	B1-U0-G1
525	A	NL	6235	6486	6761	B1-U0-G1	B1-U0-G1	B1-U0-G1
525	B		5889	6126	6386	B1-U0-G1	B1-U0-G1	B1-U0-G1
525	C		5686	5914	6165	B1-U0-G2	B1-U0-G2	B1-U0-G2
525	E		5734	5965	6218	B1-U0-G2	B1-U0-G2	B1-U0-G2
525	F		6253	6504	6780	B2-U0-G1	B2-U0-G1	B3-U0-G1
525	G		5779	6012	6267	B3-U0-G1	B3-U0-G1	B3-U0-G1
525	A		CL	5311	5524	5758	B1-U0-G1	B1-U0-G1
525	B	5016		5218	5439	B1-U0-G1	B1-U0-G1	B1-U0-G1
525	C	4842		5037	5251	B1-U0-G1	B1-U0-G1	B1-U0-G1
525	E	4884		5080	5296	B1-U0-G2	B1-U0-G2	B1-U0-G2
525	F	5326		5540	5775	B2-U0-G1	B2-U0-G1	B2-U0-G1
525	G	4922		5120	5337	B3-U0-G1	B3-U0-G1	B3-U0-G1
525	C	DL		3675	3822	3984	B1-U0-G1	B1-U0-G1
525	G		3735	3885	4050	B2-U0-G1	B2-U0-G1	B2-U0-G1
615	A	NL	7118	7404	7718	B1-U0-G1	B1-U0-G1	B1-U0-G1
615	B		6723	6994	7290	B1-U0-G1	B1-U0-G2	B1-U0-G2
615	C		6491	6752	7038	B1-U0-G2	B1-U0-G2	B1-U0-G2
615	E		6546	6809	7098	B1-U0-G2	B1-U0-G2	B1-U0-G2
615	F		7138	7425	7740	B3-U0-G1	B3-U0-G1	B3-U0-G1
615	G		6598	6863	7154	B3-U0-G1	B3-U0-G1	B3-U0-G1
615	A		CL	6063	6306	6574	B1-U0-G1	B1-U0-G1
615	B	5726		5956	6209	B1-U0-G1	B1-U0-G1	B1-U0-G1
615	C	5528		5750	5994	B1-U0-G1	B1-U0-G1	B1-U0-G2
615	E	5575		5800	6045	B1-U0-G2	B1-U0-G2	B1-U0-G2
615	F	6080		6324	6592	B2-U0-G1	B2-U0-G1	B2-U0-G1
615	G	5619		5845	6093	B3-U0-G1	B3-U0-G1	B3-U0-G1
615	C	DL		4195	4364	4549	B1-U0-G1	B1-U0-G1
615	G		4264	4436	4624	B2-U0-G1	B2-U0-G1	B2-U0-G1

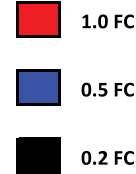
**EPCO-02-615-A-40-NL**

**LUMINAIRE DATA**

Description	<b>4000 Kelvin, 70CRI</b>
Delivered Lumens	<b>7406</b>
Watts	<b>70.25</b>
Efficacy	<b>105</b>
IES Type	<b>I</b>
BUG Rating	<b>B1-U0-G1</b>
Mounting Height	<b>15 ft</b>
Grid Scale	<b>15 ft</b>



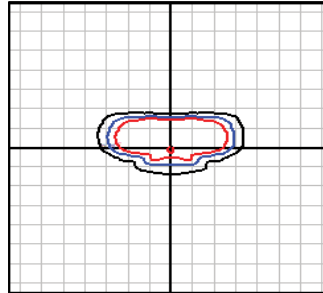
**15' Mounting Height**



**EPCO-02-615-B-40-NL**

**LUMINAIRE DATA**

Description	<b>4000 Kelvin, 70CRI</b>
Delivered Lumens	<b>6995</b>
Watts	<b>70.25</b>
Efficacy	<b>100</b>
IES Type	<b>II</b>
BUG Rating	<b>B1-U0-G2</b>
Mounting Height	<b>15 ft</b>
Grid Scale	<b>15 ft</b>



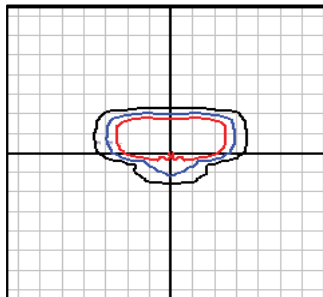
**15' Mounting Height**



**EPCO-02-615-C-40-NL**

**LUMINAIRE DATA**

Description	<b>4000 Kelvin, 70CRI</b>
Delivered Lumens	<b>6752</b>
Watts	<b>70.25</b>
Efficacy	<b>96</b>
IES Type	<b>III</b>
BUG Rating	<b>B1-U0-G2</b>
Mounting Height	<b>15 ft</b>
Grid Scale	<b>15 ft</b>



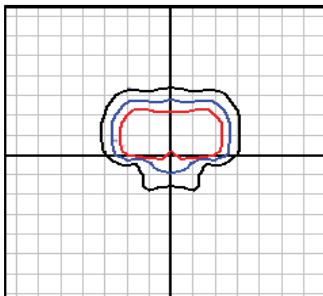
**15' Mounting Height**



**EPCO-02-615-E-40-NL**

**LUMINAIRE DATA**

Description	<b>4000 Kelvin, 70CRI</b>
Delivered Lumens	<b>6809</b>
Watts	<b>70.25</b>
Efficacy	<b>97</b>
IES Type	<b>IV</b>
BUG Rating	<b>B1-U0-G2</b>
Mounting Height	<b>15 ft</b>
Grid Scale	<b>15 ft</b>



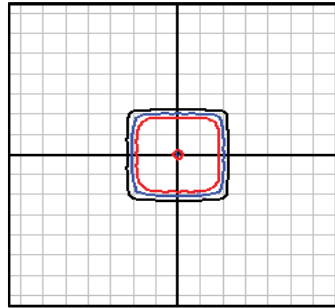
**15' Mounting Height**



**EPCO-02-615-F-40-NL**

**LUMINAIRE DATA**

Description	<b>4000 Kelvin, 70CRI</b>
Delivered Lumens	<b>7425</b>
Watts	<b>70.25</b>
Efficacy	<b>106</b>
IES Type	<b>VS</b>
BUG Rating	<b>B3-U0-G1</b>
Mounting Height	<b>15 ft</b>
Grid Scale	<b>15 ft</b>



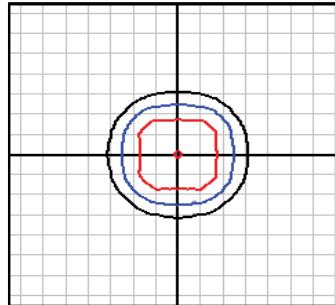
**15' Mounting Height**

- 1.0 FC
- 0.5 FC
- 0.2 FC

**EPCO-02-615-G-40-NL**

**LUMINAIRE DATA**

Description	<b>4000 Kelvin, 70CRI</b>
Delivered Lumens	<b>6864</b>
Watts	<b>70.25</b>
Efficacy	<b>98</b>
IES Type	<b>VS</b>
BUG Rating	<b>B3-U0-G1</b>
Mounting Height	<b>15 ft</b>
Grid Scale	<b>15 ft</b>



**15' Mounting Height**

- 1.0 FC
- 0.5 FC
- 0.2 FC

Constitution/EPCO Series

LED Post Top Lighting

Mounting & Accessories

Project Name \_\_\_\_\_

Date \_\_\_\_\_ Type \_\_\_\_\_

Notes \_\_\_\_\_

