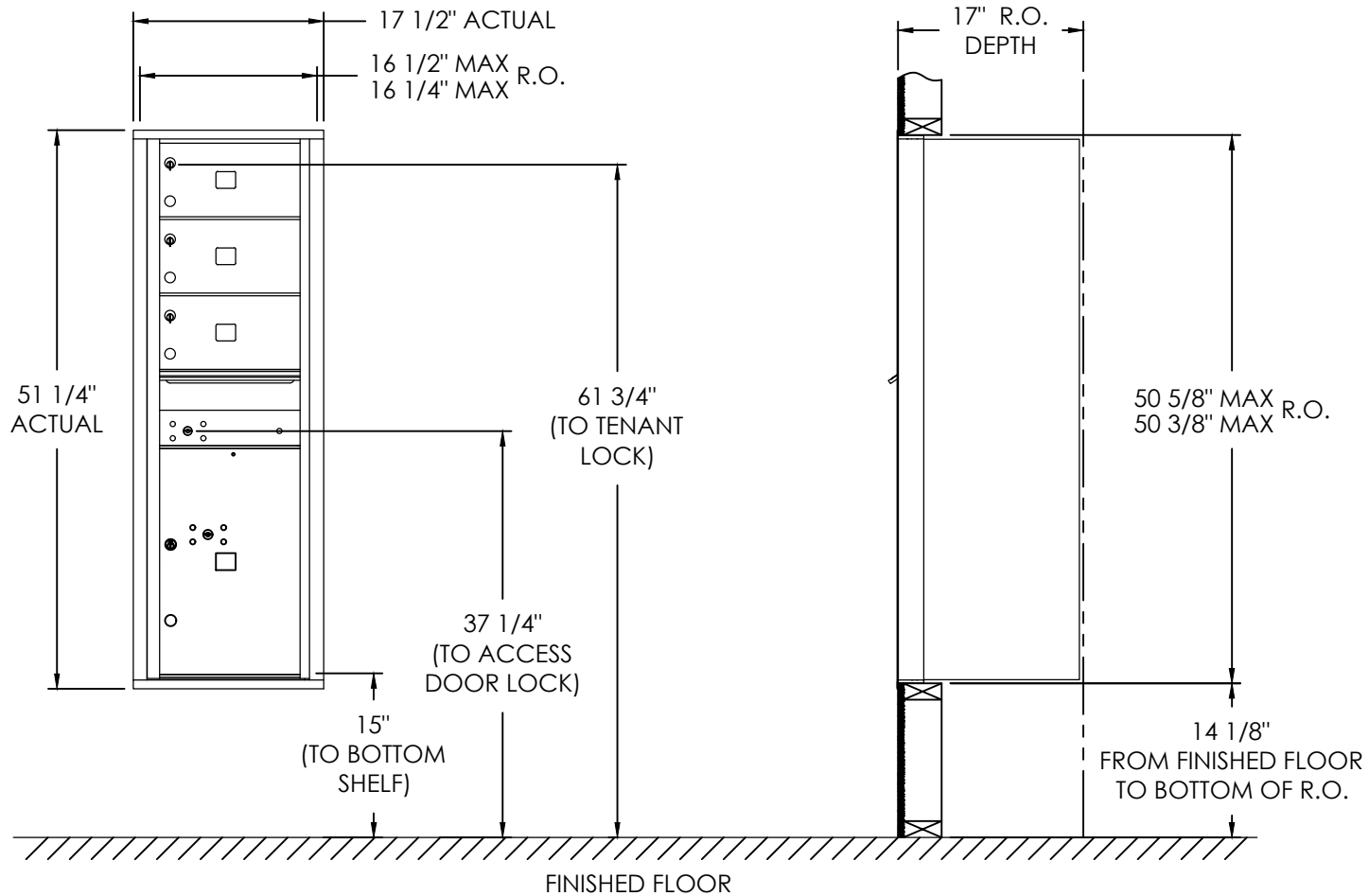


# versatile™ 4C Mailbox, 4C14S-03



COMPARTMENT CHART

DESCRIPTION	COMPARTMENT	COMPARTMENT SIZE	QTY.
MAILBOX	MB2	6-1/2" H x 12" W x 15" D	3
OUTGOING MAIL	OM1	3" H x 12" W x 15" D	1
PARCEL	PL6	20-1/2" H x 12" W x 15" D	1

- Notes:
- This module meets the USPS STD-4C requirements for installation defined below when the mailbox is installed per the dimensions provided on this drawing.
    - At least one customer compartment shall be positioned less than 48" above finished floor (AFF).
    - No parcel locker (interior bottom shelf) shall be positioned less than 15" AFF.
    - No patron (tenant) lock shall be positioned more than 67" AFF.
    - No customer compartment (interior bottom shelf) shall be positioned less than 28" AFF.
    - The USPS Arrow lock shall be positioned 36"- 48" AFF.
  - This 4C mailbox can also be used for private applications.
  - The rough opening width for multi-unit 4C installations is provided using the Florence configurator: [www.florencemailboxes.com/configurator](http://www.florencemailboxes.com/configurator).

PRODUCT SERIES: VERSATILE™ 4C FRONT LOAD MAILBOX

**FLORENCE**  
**CORPORATION**  
 5935 Corporate Drive - Manhattan, KS 66503  
 800.275.1747 - [www.florencemailboxes.com](http://www.florencemailboxes.com)

MODEL	4C14S-03	REV	C
SCALE	NONE	LAST REV DATE	4/16/26
DRAWING NUMBER	4C14S-03CS	DRAWN BY	RAK