

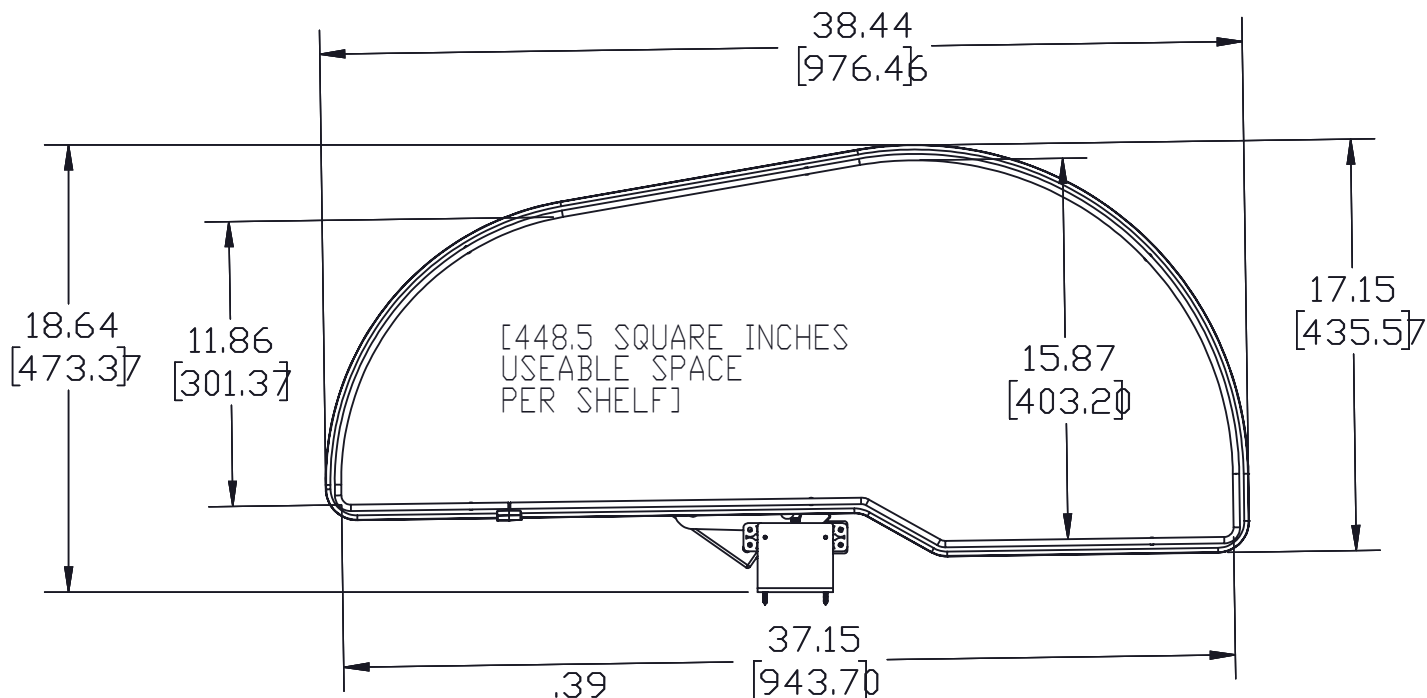
4 3 2 1

B

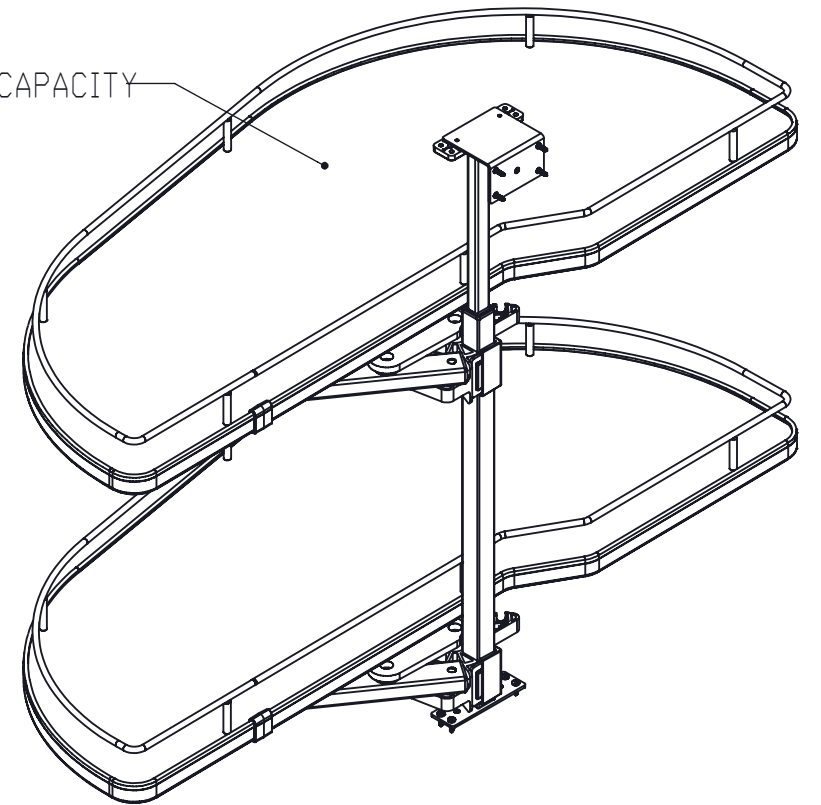
B

A

A



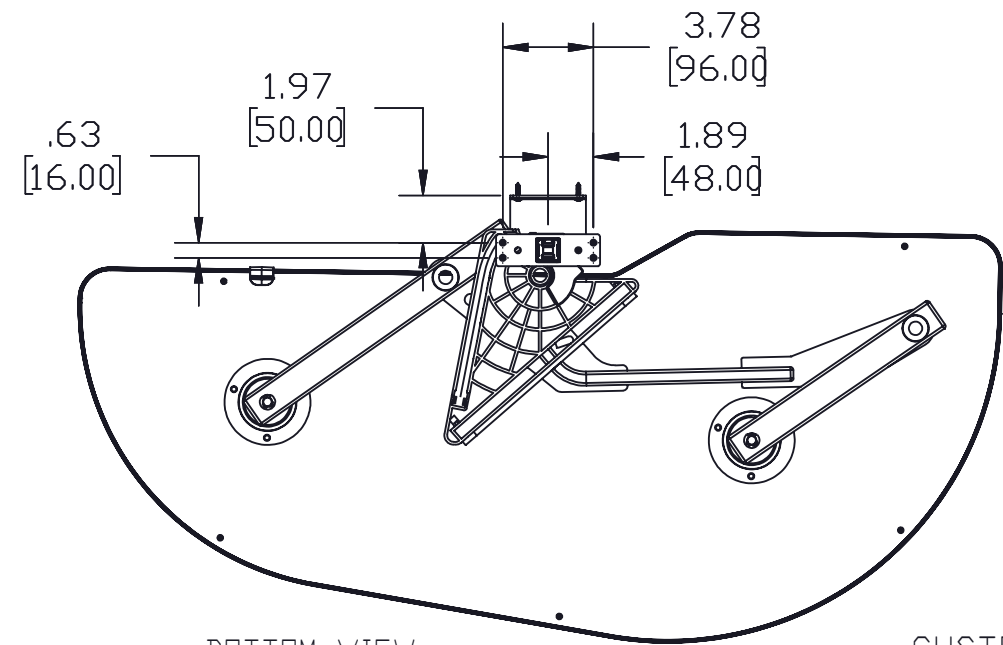
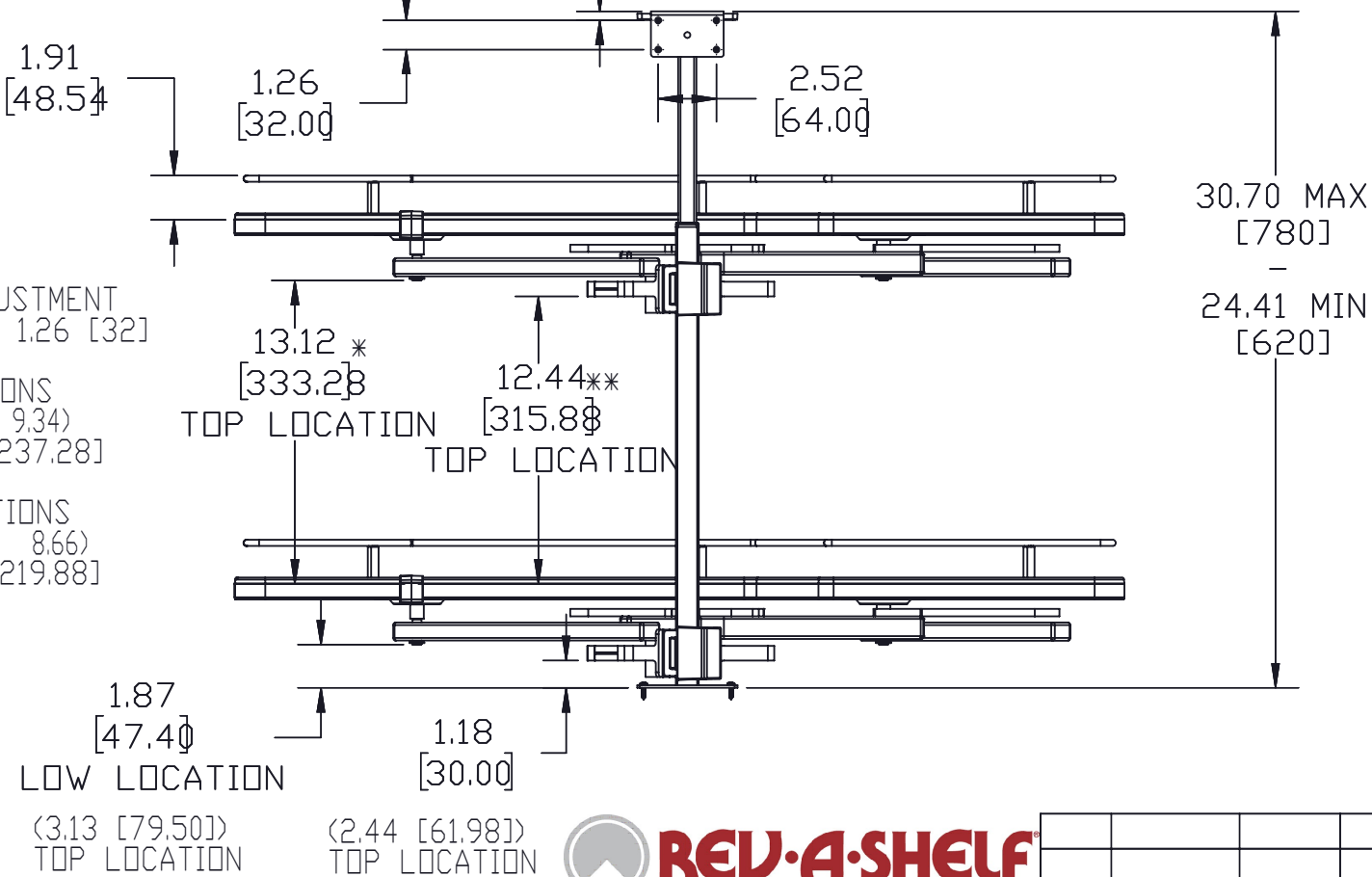
33 POUNDS (PER SHELF) CAPACITY



NOTE: SHELF ADJUSTMENT  
SPACING IS 1.26 [32]

\* (LOWER LOCATIONS  
11.86, 10.60, 9.34)  
[301.28][269.28][237.28]

\*\* (LOWER LOCATIONS  
11.18, 9.92, 8.66)  
[283.88][251.88][219.88]



BOTTOM VIEW

CUSTOMER DRAWING

UNCONTROLLED IF PRINTED

PROPRIETARY AND CONFIDENTIAL  
This drawing is the property of Rev-A-Shelf LLC (RAS) and is disclosed in confidence to the extent its subject matter is original to RAS. Any vendor receiving this drawing from RAS shall hold and use this drawing for the sole benefit of RAS and shall not disclose it to, or use or reproduce it for any third party, or perform any act adverse to the interest of RAS with respect to this drawing without the express written permission of RAS. Vendors shall not revise any physical, dimensional or performance characteristic unless authorized by Rev-A-Shelf Engineering.



REV	DATE	BY	DESCRIPTION OF CHANGE

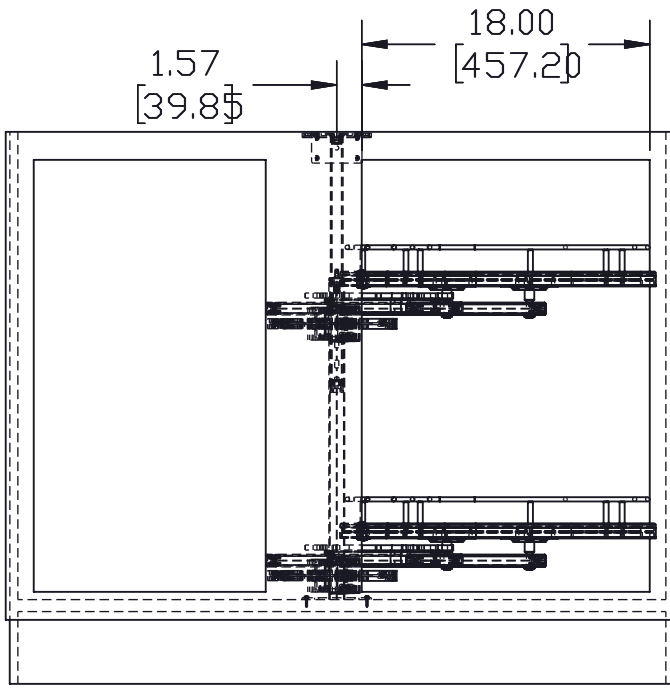
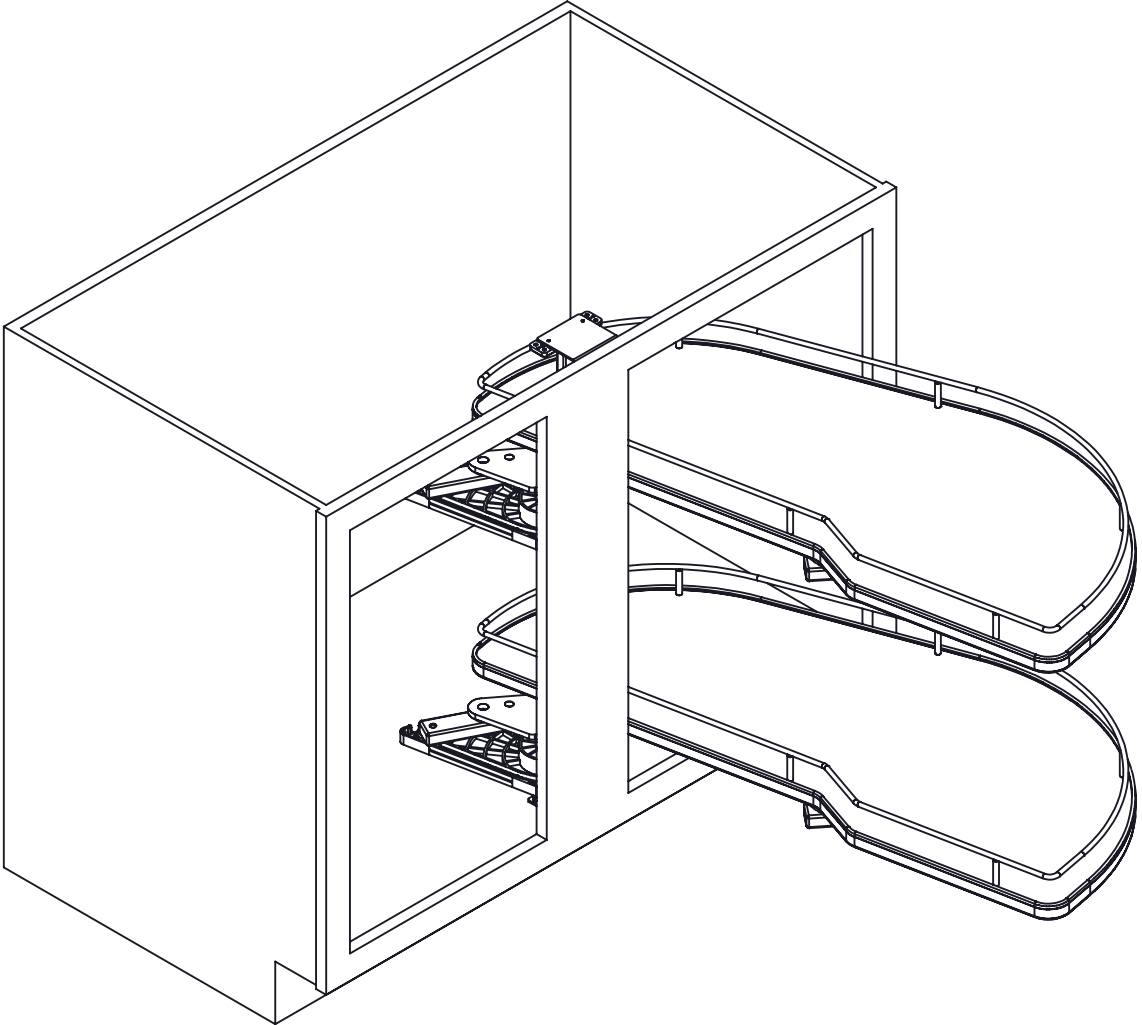
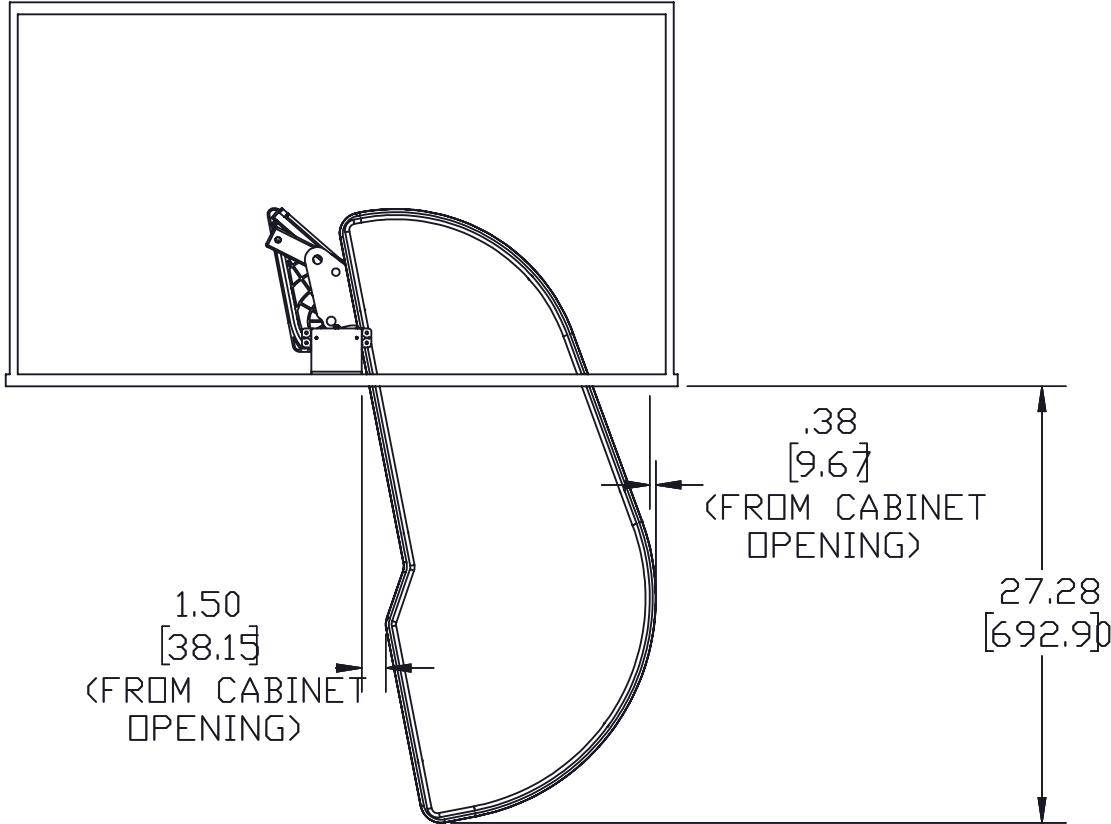
UNLESS OTHERWISE SPECIFIED:			Description:		
TOLERANCES = INCH/(MM)			2-TIER PULLOUT SOLID		
MAT. DEC.			BOTTOM ORGANIZER		
(WOOD) .XX +/- .03 [8mm]			RIGHT DOOR/BLIND LEFT		
(OTHER) .XX +/- .02 [5mm]			PART NO. 587-18-RMP		
(ALL) .XXX +/- .005 [13 mm]			SIZE DWG. NO.		
FRACTIONS +/- 1/32 [8 mm]			B 587-18-RMP		
ANGLES +/- 1/2°			REV		
First Angle Projection			SCALE: 1:8 WEIGHT: SHEET 1 OF 3		
MATERIAL		FINISH		DO NOT SCALE DRAWING	
NAME		DATE		DRAWN	
KRR		1-22-24			

4

3

2

1



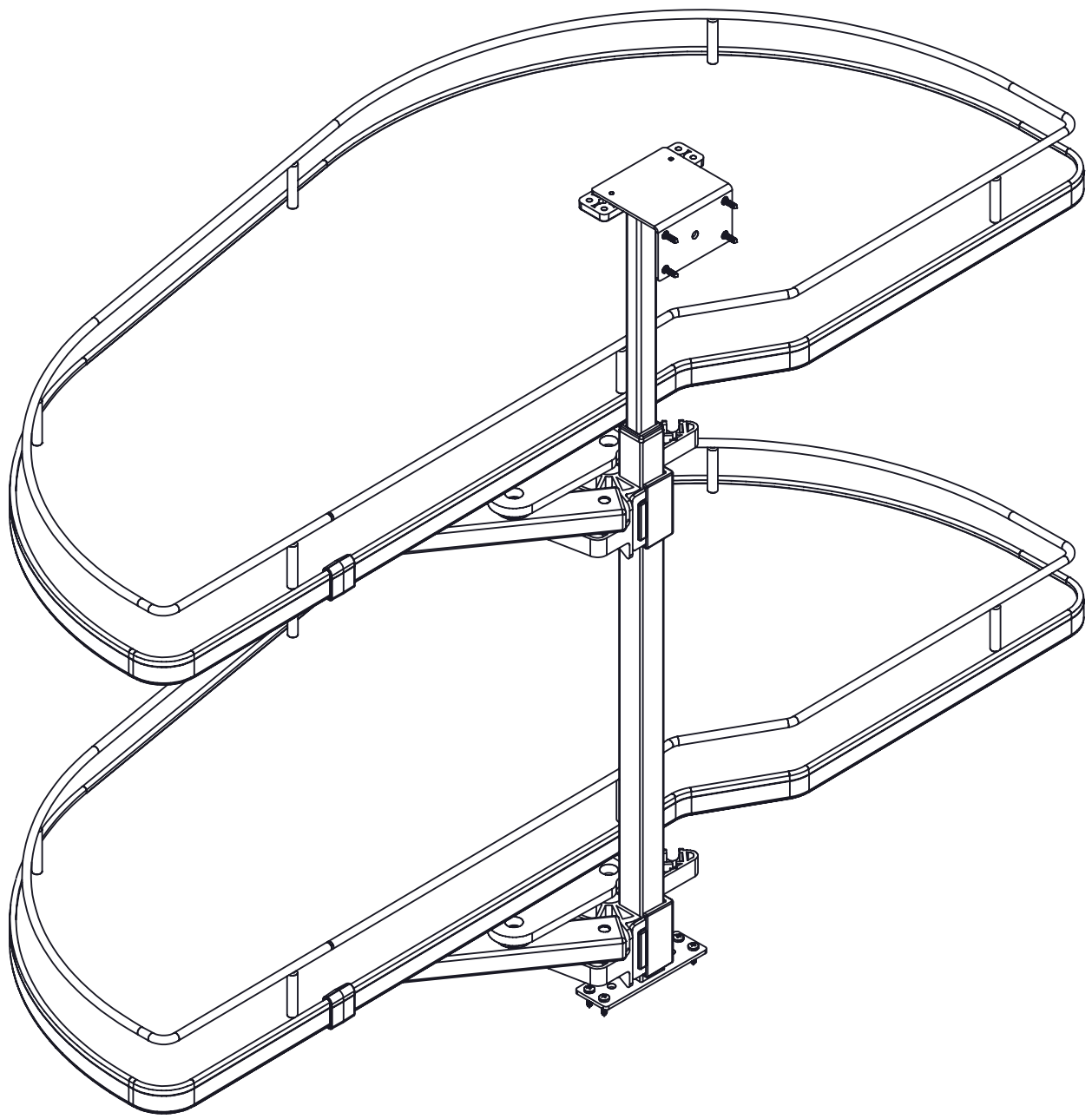
UNCONTROLLED IF PRINTED

PROPRIETARY AND CONFIDENTIAL  
This drawing is the property of Rev-A-Shelf LLC (RAS) and is disclosed in confidence to the extent its subject matter is original to RAS. Any vendor receiving this drawing from RAS shall hold and use this drawing for the sole benefit of RAS and shall not disclose it to, or use or reproduce it for any third party, or perform any act adverse to the interest of RAS with respect to this drawing without the express written permission of RAS. Vendors shall not revise any physical, dimensional or performance characteristic unless authorized by Rev-A-Shelf Engineering.

REV	DATE	BY	DESCRIPTION OF CHANGE

UNLESS OTHERWISE SPECIFIED:				Description:			
TOLERANCES = INCH/(MM)				2-TIER PULLOUT SOLID			
MAT. DEC.				BOTTOM ORGANIZER			
(WOOD) .XX +/- .03 [8mm]				RIGHT DOOR/BLIND LEFT			
(OTHER) .XX +/- .02 [5mm]				PART NO. 587-18-RMP			
(ALL) .XXX +/- .005 [13 mm]				SIZE DWG. NO.			
FRACTIONS +/- 1/32 [8 mm]				B 587-18-RMP			
ANGLES +/- 1/2°				REV			
First Angle Projection				SCALE: 1:12 WEIGHT:			
MATERIAL		FINISH		SHEET 2 OF 3			
DO NOT SCALE DRAWING		NAME					
DRAWN		KRR					
		1-22-24					

4 3 2 1



PART DIMENSIONS	
WIDTH	38.44 [976.46]
DEPTH	18.64 [473.37]
HEIGHT	24.41 [620] MIN.

MIN CABINET OPENING				
	FACE FRAME	FRAMELESS	INSET FACE FRAME	INSET FRAMELESS
WIDTH	18.00 [457.2]	19.50 [495.3]	18.00 [457.2]	19.50 [495.3]
DEPTH	23.00 [584.2]	23.00 [584.2]	23.00 [584.2]	23.00 [584.2]
HEIGHT *	19.37 [492]	19.37 [492]	19.37 [492]	19.37 [492]

\* WITH TOP SHELF IN THE LOWEST POSITION


CUSTOMER DRAWING



UNCONTROLLED IF PRINTED

PROPRIETARY AND CONFIDENTIAL  
This drawing is the property of Rev-A-Shelf LLC (RAS) and is disclosed in confidence to the extent its subject matter is original to RAS. Any vendor receiving this drawing from RAS shall hold and use this drawing for the sole benefit of RAS and shall not disclose it to, or use or reproduce it for any third party, or perform any act adverse to the interest of RAS with respect to this drawing without the express written permission of RAS. Vendors shall not revise any physical, dimensional or performance characteristic unless authorized by Rev-A-Shelf Engineering.

REV	DATE	BY	DESCRIPTION OF CHANGE

UNLESS OTHERWISE SPECIFIED:			Description:		
TOLERANCES = INCH/(MM) MAT. DEC. (WOOD) .XX +/- .03 [8mm] (OTHER) .XX +/- .02 [5mm] (ALL) .XXX +/- .005 [13 mm] FRACTIONS +/- 1/32 [8 mm] ANGLES +/- 1/2°			2-TIER PULLOUT SOLID BOTTOM ORGANIZER RIGHT DOOR/BLIND LEFT		
First Angle Projection 			PART NO. 587-18-RMP		
MATERIAL		FINISH	SIZE DWG. NO. B 587-18-RMP		REV
DO NOT SCALE DRAWING	NAME	DATE			
DRAWN	KRR	1-22-24	SCALE: 1:5		WEIGHT:
			SHEET 3 OF 3		