

EVOLVE

Lantern EPLN Series LED Post Top Lighting



Project Name _____

Date _____ Type _____

Notes _____

GLI Brands Utility Roadway Representatives Exclusively

- Reliable, uniform, glare free illumination
- Types II, III, IV, V and custom distributions
- 3000K, 4000K, 5000K CCT
- 0-10V dimming ready

CONSTRUCTION

Housing:	Aluminum 360 alloy
Lens:	LED engine, TIR optics, gasket and bezel plate
Paint:	Die Cast Aluminum, Black, Dark Bronze, RAL & Customer colors available
Weight:	35lbs. (15.9kg)

OPTICAL SYSTEM

Lumens:	3,600 – 5,700
Distribution:	Type II, Type III, Type IV & Type V
Efficacy:	29-125.5 LPW
CCT:	3000K, 4000K, & 5000K (2700K 80 CRI and 3500K 70 CRI are also configured)
CRI (Min):	70

ELECTRICAL

Input Voltage:	120-277V
Input Frequency:	50/60Hz
Power Factor:	>0.90 @ full load, 100V through 277V
Total Harmonic Distortion:	≤ 20% @ full load

SURGE PROTECTION*

Standard	Optional
10kV/5kA	20kV/10kA

*Per ANSI C136.2-2015

WARRANTY

5 Year (Standard)

10 Year (Optional)

LUMEN MAINTENANCE

Projected Lxx per IES TM-21 at 25°C

SKU	LXX(10K) @ Hours		
	25,000 HR	50,000 HR	60,000 HR
EPLN	L94	L91	L90

Note: Projected LXX based on LM80 (> 10,000 hour testing). Accepted Industry tolerances apply to initial luminous flux and lumen maintenance measurements.

AMBIENT TEMPERATURE FACTOR

Ambient Temp (°C)	Initial Flux Factor	Ambient Temp (°C)	Initial Flux Factor
10	1.02	30	0.99
20	1.01	40	0.98
25	1.00		

RATINGS

Operating Temperature:	-30°C to 40°C
Vibration:	Available upon request
LM-79:	Available upon request
EPA:	2.8

CONTROLS

Dimming:	Standard - 0-10V
Sensors:	Top of Fixture: Occupancy Sensor, On/Off control w/Photocell (optional), Occupancy Sensor, Programmable Control w/Photocell (optional), 3-pin ANSI C136.10 On/Off Receptacle (optional)

EPLN 01

PROD. ID	MOUNT TYPE	VOLTAGE	LUMEN OUTPUT	DISTRIBUTION	LENS	CCT	CONTROLS PER ANSI C136.41	MOUNTING	COLOR	OPTIONS
E = Evolve	01 = Post Top Mount	0 = 120-277V	04 = 3875 - 5736 Clear Lens, 3610 - 5449 Diffused Lens	B = Type II	CL = Clear Lens	30 = 3000K	1 = None	PT5 = Post Top Adapter for 5" Pole	BLCK = Black	R = Secondary 10kV/5kA SPD
P = Post Top				C = Type III	DL = Diffused Lens	40 = 4000K	A = 7-Pin Receptacle		DKBZ = Dark Bronze	T = Secondary 20kV/10kA SPD
LN = Lantern				E = Type IV		50 = 5000K	D = 7-Pin Receptacle with Shorting Cap			XXX = Special Options
				F = Type V			E = 7 Pin Receptacle with Long Life non-Dimming PE Control			

PERFORMANCE DATA (32 LEDS, 700 MA DRIVE CURRENT, 75 WATTS)

REFRACTOR		TYPICAL INITIAL LUMENS			WATTAGE	BUG RATINGS		
DIST CODE	CODE	3000K	4000K	5000K	120-277V	3000K	4000K	5000K
B	CL	4016	5156	5427	75	B1-U3-G2	B2-U2-G3	B2-U3-G3
C		3875	4975	5237	75	B1-U3-G2	B2-U3-G2	B2-U3-G2
E		4245	5449	5736	75	B1-U3-G2	B1-U3-G3	B1-U3-G3
F		3809	4945	5183	75	B2-U2-G2	B3-U3-G2	B3-U3-G3
B	DL	3818	4902	5160	75	B1-U3-G3	B2-U4-G3	B2-U4-G3
C		3674	4716	4964	75	B1-U3-G3	B1-U4-G3	B1-U4-G3
E		4032	5176	5449	75	B1-U4-G3	B1-U4-G3	B1-U4-G3
F		3610	4685	4901	75	B2-U3-G3	B2-U4-G3	B2-U4-G3

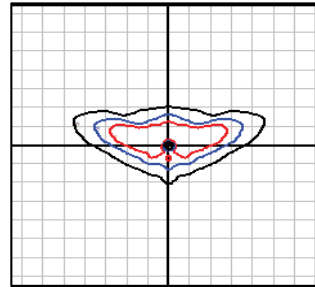
For additional information on EPLN IES files, please click the following link:

[EPLN IES Files](#)

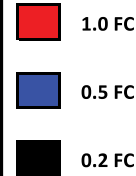
EPLN-01-0-04-B-40-CL

LUMINAIRE DATA

Description	4000 Kelvin, 70CRI
Delivered Lumens	5902
Watts	74.8
Efficacy	79
IES Type	II
BUG Rating	B2-U3-G3
Mounting Height	15 ft
Grid Scale	15 ft



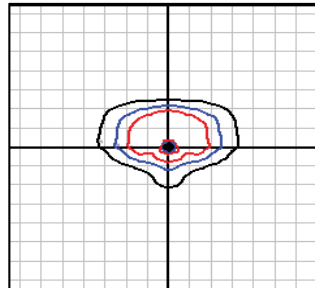
15' Mounting Height



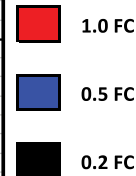
EPLN-01-0-04-C-40-CL

LUMINAIRE DATA

Description	4000 Kelvin, 70CRI
Delivered Lumens	5696
Watts	75
Efficacy	76
IES Type	III
BUG Rating	B2-U3-G2
Mounting Height	15 ft
Grid Scale	15 ft



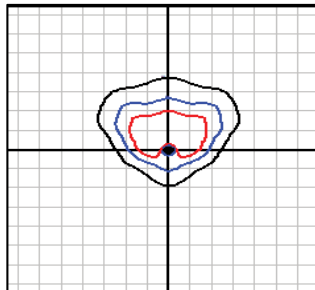
15' Mounting Height



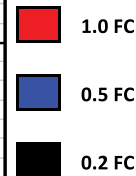
EPLN-01-0-04-E-40-CL

LUMINAIRE DATA

Description	4000 Kelvin, 70CRI
Delivered Lumens	6238
Watts	74
Efficacy	84
IES Type	IV
BUG Rating	B1-U3-G3
Mounting Height	15 ft
Grid Scale	15 ft



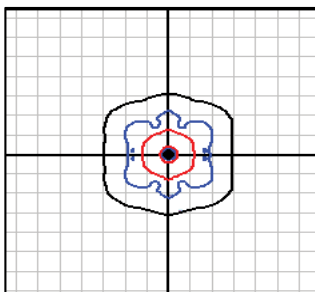
15' Mounting Height



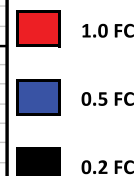
EPLN-01-0-04-F-40-CL

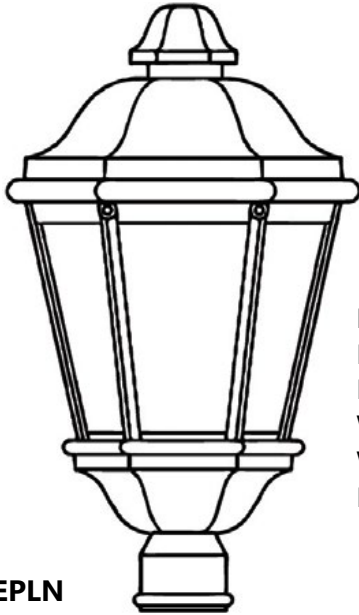
LUMINAIRE DATA

Description	4000 Kelvin, 70CRI
Delivered Lumens	5637
Watts	74.3
Efficacy	76
IES Type	VS
BUG Rating	B3-U3-G3
Mounting Height	15 ft
Grid Scale	15 ft



15' Mounting Height





EPLN
HEIGHT: 31"/790mm
LENGTH: 18"/460mm
WIDTH: 18"/460mm
WEIGHT: 40 lbs.
EPA: 2.80

EPLN