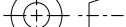
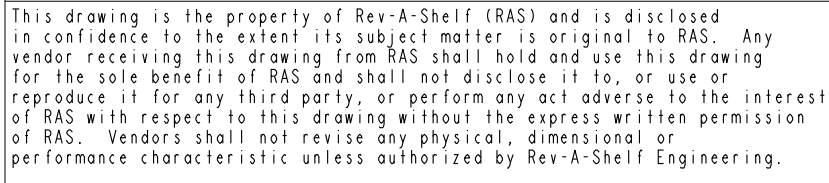


This drawing is the property of Rev-A-Shelf (RAS) and is disclosed in confidence to the extent its subject matter is original to RAS. Any vendor receiving this drawing from RAS shall hold and use this drawing for the sole benefit of RAS and shall not disclose it to, or use or reproduce it for any third party, or perform any act adverse to the interest of RAS with respect to this drawing without the express written permission of RAS. Vendors shall not revise any physical, dimensional or performance characteristic unless authorized by Rev-A-Shelf Engineering.

REV.	DATE	BY	DESCRIPTION OF CHANGE

INCH [MM]	AMERICAN PROJECTION		BY	DATE	REV-A-SHELF <sup>®</sup> , INC.	
		DRAWN	KRR	4-9-18	SIZE <b>B</b>	SC SOLID BOTTOM PULLOUT PANTRY
TOLERANCES MAT. DEC. (WOOD) .XX ±.03 [.8mm] (OTHER) .XX ±.02 [.5mm] (ALL) .XXX ±.005 [.13 mm] FRACTIONS ±1/32 [.8 mm]		ANGLES ±1/2°	MATERIAL		DRAWING NO.	SCALE
			FINISH		PART NO.	SHEET OF
					5373-19-XX	0.100 1 2

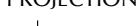


PART DIMENSIONS		
	MIN	MAX
WIDTH	19.00 [482,6]	19.87 [504,6]
DEPTH	21.72 [551,7]	
HEIGHT	73.63 [1870]	80.75 [2051]

MIN CABINET OPENING				
	FACE FRAME	FRAMELESS	INSET FACE FRAME	INSET FRAMELESS
WIDTH	19.50 [495,3]	19.50 [495,3]	19.50 [495,3]	19.50 [495,3]
DEPTH	21.75 [552,5]	21.75 [552,5]	22.50 [571,5]	22.50 [571,5]
HEIGHT	73.63 [1870]	73.63 [1870]	73.63 [1870]	73.63 [1870]

SLIDE SPECIFICATIONS				
SLIDE TYPE	HEAVY DUTY	SLIDE EXTENSION	20.87 [530]	MAX WEIGHT RATING
SLIDE CLOSING	SOFT CLOSE	SLIDE LENGTH	21.65 [550]	
SLIDE MOUNTING	BOTTOM	SLIDE FINISH	ZINC	

CUSTOMER DRAWING

				<div>INCH [MM]</div>	<div>AMERICAN PROJECTION</div> <div></div>	DRAWN	KRR	4-9-18	<div>REV-A-SHELF<sup>®</sup>, INC.</div>		
									SIZE B	SC SOLID BOTTOM PULLOUT PANTRY	
				<div>TOLERANCES</div> <div>MAT. DEC.</div> <div>(WOOD) .XX ±.03 [.8mm]</div> <div>(OTHER) .XX ±.02 [.5mm]</div> <div>(ALL) .XXX ±.005 [.13 mm]</div> <div>FRACTIONS ±1/32 [.8 mm]</div>	<div>ANGLES ±1/2°</div>	MATERIAL		DRAWING NO.	SCALE		
								5373-19-XX	0.100		
						FINISH		PART NO.	SHEET OF		
								5373-19-XX	2 2		
REV.	DATE	BY	DESCRIPTION OF CHANGE								