

READ ALL INSTRUCTIONS BEFORE INSTALLING SYSTEM.

Before beginning installation, be sure power is turned OFF to light system.

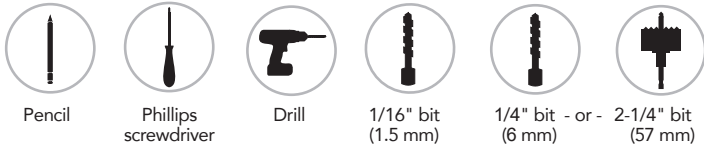
Note: A **12VDC 60W power supply** can power a maximum of (60) at the 1.3W setting, (20) at the 2.7W setting, or (13) at the 4.5W setting.

A **24VDC 96W power supply** can power a maximum of (96) at the 1.3W setting, (32) at the 2.7W setting, or (21) at the 4.5W setting.

- FIRST, roughly lay out lighting system before installation to help verify final positioning of all components and cord lengths.
Note: Maximum length of cord from power supply to light should be 16' (5 m). Longer cords could result in poor light quality.
- Install 12VDC or 24VDC (depending on OptiPockit SL purchased) power supply concealed from view. Keep **power off** to power supply until complete system is installed.

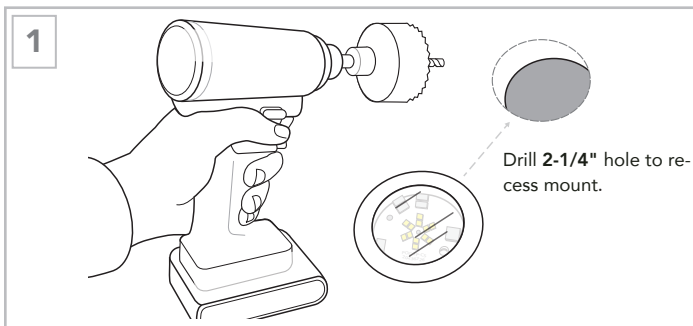
Next, select either recess mount or surface mount options.

Tools required:

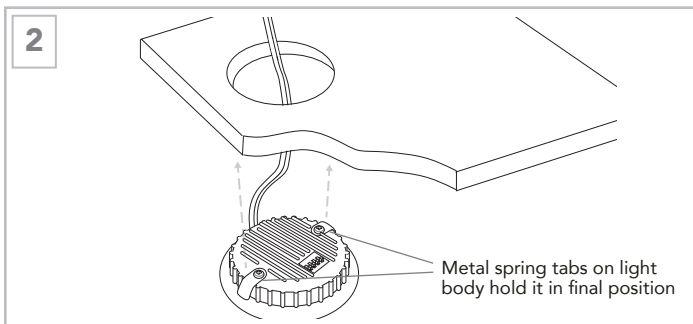


Steps to RECESS Mount:

1. Drill hole for recess mounting. Remove rough areas at edge and inside hole.



2. Feed wires through hole and push OptiPockit light body into place. Proceed to **Final Steps** (see page 2).



Models:

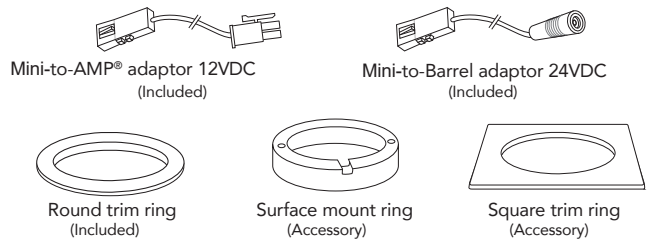
OptiPockit SL (1.3W, 2.7W and 4.5W), recessed, select dimming.

12VDC P/N: OPOC-SL-12V-RC-NBW

24VDC P/N: OPOC-SL-24V-RC-NBW

12VDC Power Supply.....Sold separately

24VDC Power Supply.....Sold separately



Included with each OptiPockit light: Mini-to-AMP® adaptor (12VDC) or Mini-to-Barrel adaptor (24VDC), starter cord 79" (2 m), and three interchangeable round trim rings (nickel, black and white).

Accessories: (sold separately)

Surface Mount Ring (includes 1 surface mount ring, available in 3 colors)

Nickel P/N: OPOC-ACC-SAR-NI

Black P/N: OPOC-ACC-SAR-BL

White P/N: OPOC-ACC-SAR-WH

Trim Kit Square (includes 1 surface mount ring and 1 square trim ring, available in 3 colors)

Nickel P/N: OPOC-ACC-TKS-NI

Black P/N: OPOC-ACC-TKS-BL

White P/N: OPOC-ACC-TKS-WH

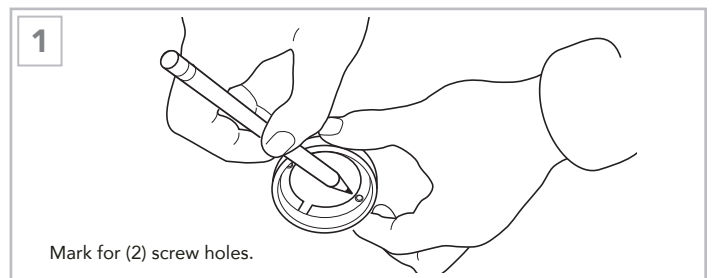
12V POWER CONNECTOR P/N: PWCON-12SXT-96
96" length with 2 wire splice

24V POWER CONNECTOR P/N: PWCON-24SXT-96
96" length with 2 wire splice

Tresco® offers other accessories for your lighting project.

Steps to SURFACE Mount:

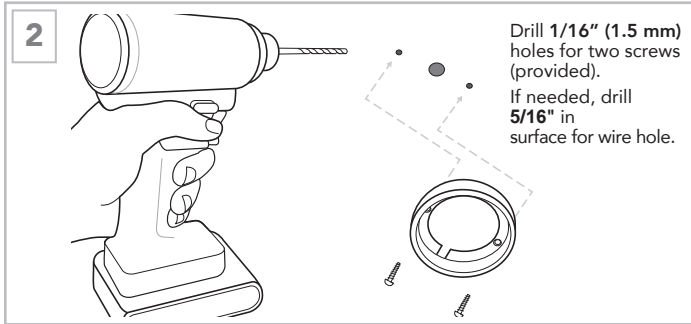
1. Mark position of light fixture on surface using mounting ring as a template.



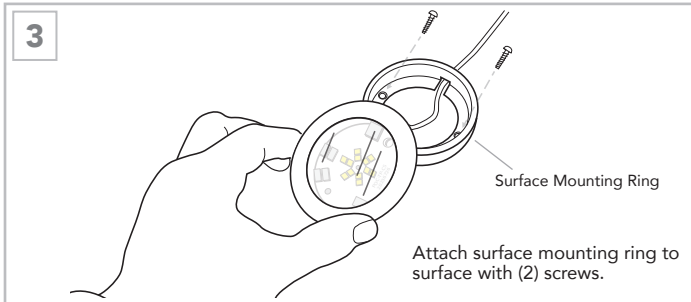
Note: If you decide to route wires through hole in surface also mark placement of 1/4" (6mm) hole inside the perimeter of surface mounting ring, so wires are hidden when ring is mounted. (see next illustration)

(Continued on page 2)

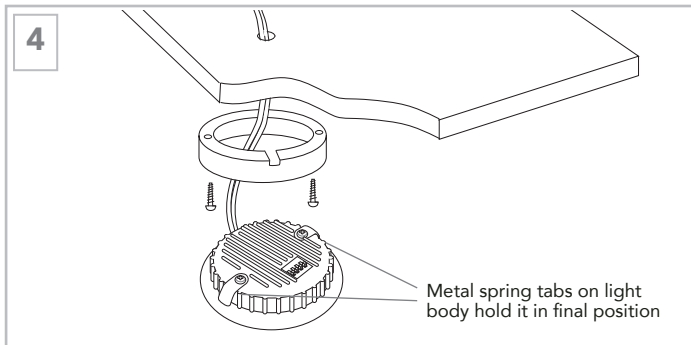
2. Drill holes for mounting ring. Remove rough areas at edge and inside hole.



3. Pass the light fixture wires through mounting ring and route wire either through hole in mounting surface or mounting ring knockout.

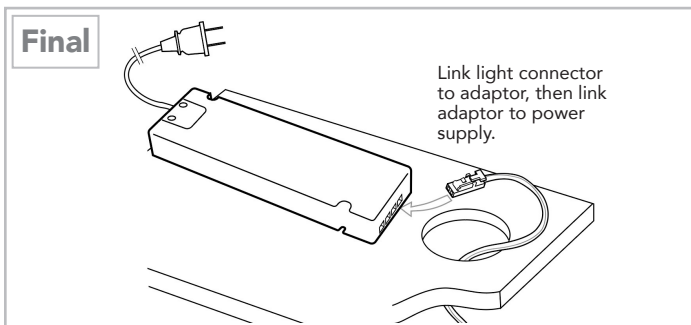


4. Push OptiPockit light body into surface mounting ring. Proceed to **Final Steps** below.



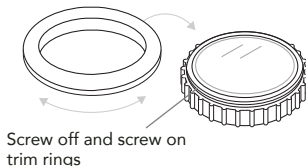
Final Steps:

- Complete wiring installation to power supply.
- Finish wiring to power supply. Turn power on to power supply.



Trim Rings

If desired, trim rings can be changed by unscrewing the current trim ring and screwing on one of a different color (nickel, black and white round trim rings supplied, other trim rings are available).

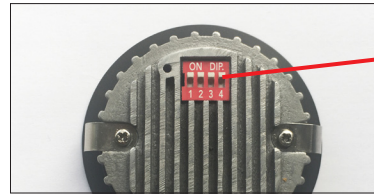


DIP Switch Settings:

OptiPockit SL uses 4 DIP switches on the back for multiple settings on the light. The table below explains how to set each switch to achieve the desired output.

The settings allow for:

3 power settings: 1.3W, 2.7W and 4.5W
3 Color Temps: 3000k, 3500k and 5000k



OptiPockit Wattage	Color Temp	DIP Switch Positions			
		1	2	3	4
HIGHEST (4.5W)	3000k	ON	ON	ON	ON
	3500k	ON	ON	OFF	ON
	5000k	ON	OFF	ON	ON
MEDIUM (2.7W)	3000k	ON	ON	ON	ON
	3500k	ON	ON	OFF	ON
	5000k	ON	OFF	ON	ON
LOWEST (1.3W)	3000k	ON	ON	ON	ON
	3500k	ON	ON	OFF	ON
	5000k	ON	OFF	ON	ON

IMPORTANT SAFETY INSTRUCTIONS

CAUTION: To reduce the risk of fire, electric shock, or injury to persons:

- LEDs are not replaceable.
- LED lights are bright. Do not look directly at lights.
- Not intended to be used in damp locations or outdoor areas.
- Not intended for recessed installation in ceilings or soffits.
- Do not conceal 120V Power Cord or power supply inside a wall, ceiling, soffit, or similar permanent structure, unless consulting a licensed electrician.
- Use only insulated staples or plastic ties to secure ALL loose cords.
- Route and secure cords so that they will not be pinched or damaged when the cabinet is pushed to the wall.
- A licensed electrician should be consulted for wiring through ceilings, soffits, or walls. All wiring must follow NEC regulations.

This light is intended to be used as a cabinet light on wood, particle board or other structurally sound, heat resistant surface. Care should be taken during and after installation to avoid contact of light with wiring, cord, or any combustible material.

Save these instructions for future reference.
For technical assistance, call 1-800-227-1171

tresco lighting



I-OPC-SL-1-0321

Tresco® Lighting

12400 Earl Jones Way
Louisville, KY 40299

Tel: 800-227-1171

Fax: 502-491-2215

Email: cservice@trescolighting.com

Web: www.trescolighting.com