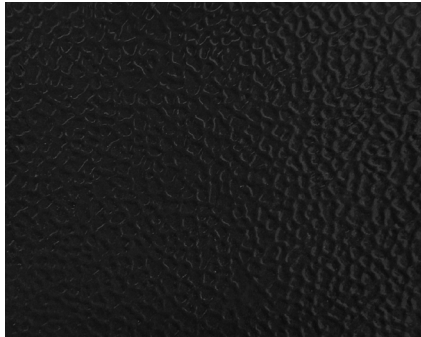


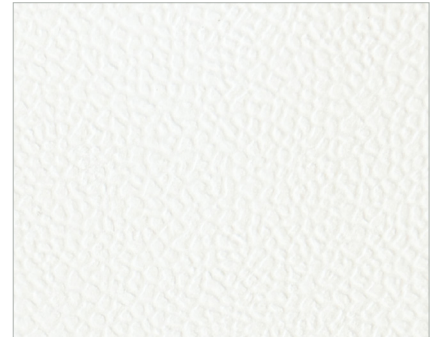
Powder Coat Finish Reference



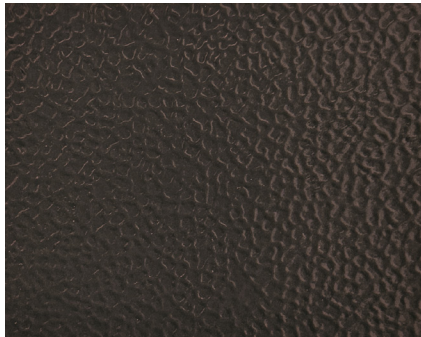
Black (Black 6C)



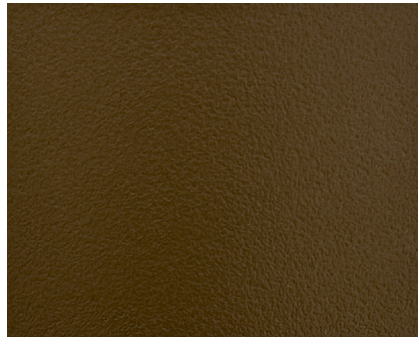
Sandstone (7501C)



White (PMS White)



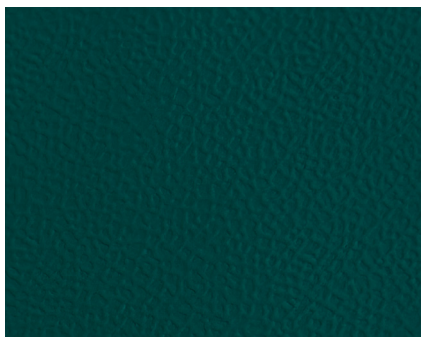
Dark Bronze (Black 7C)



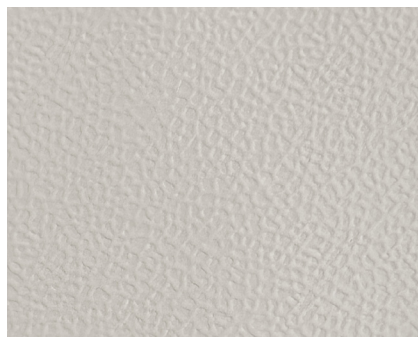
Antique Bronze (8622C)



Silver Speck (877C)



Forest Green (3308C)



Postal Grey (413C)*



Gold Speck (7-5C)

*Postal Grey finish on USPS Licensed CBU products have less texture than shown.

Color Notes:

- Not all color finishes are available on all Florence product lines, see website for details. Color availability may change without notice.
- Colors and textures shown are representative of the actual powder coat color finish but are limited by printing conditions and may vary slightly from finished product; textures are organic in nature.
- Pantone® color numbers shown in parentheses are for reference purposes only.

Powder Coat Availability

by Product Line

See Florence catalog or website for full product details.

	 Cluster Box Units (CBU/OPL)	 4C Mailboxes & Parcel Lockers	 Horizontal Mailboxes	 Vertical Mailboxes	 Mailbox Accessories
Sandstone PMS - 7501C / RAL - 1001	✓	✓			
Black PMS - Black 6C / RAL - 9005	✓	✓			
Dark Bronze PMS - Black 7C / RAL - 7022	✓	✓			
Antique Bronze PMS - 8622C / RAL - 8028		✓			
Gold Speck PMS - 7-5C / RAL - 1002		✓			
Silver Speck PMS - 877C / RAL - 9006		✓			
Postal Grey PMS - 413C / RAL - 7044	✓	✓			
White PMS White / RAL - 9003	✓	✓			
Forest Green PMS - 3308C / RAL - 6004	✓				
Anodized Aluminum Metal (no powder coat)			✓	✓	✓

NOTE: All finishes are custom formulations. Pantone and RAL color numbers shown are for reference only.