

CUSTOMER NAME _____

Project Name _____

Date _____ Type _____

Catalog Number _____

The **Lumination®** LWS series is an LED ProLine® contractor grade wrap surface mount luminaire ideal for commercial or industrial applications. Designed for maximum flexibility with switchable lumens and CCT, one product can offer the equivalent of 9 different SKU's. Field installable accessory kits require no "guessing" what the product needs of your next job will be. LWS has a five year design life with a non-glare diffuser for those with first cost needs. Available in Narrow and Wide configurations, LWS is suitable for indoor general lighting on both new construction and retrofit solutions.

Lumination® LWS Series

ProLine® Switchable Wrap Surface Mount
2ft & 4ft Narrow and Wide



ProLine®

CONSTRUCTION

- Housing:** Die-formed heavy-gauge steel. With smooth hemmed sides for safe handling.
- Lens:** Precision formed optical assembly comprised of high specularity reflectors, and a transmissive lens.
- Weights:** <10 lbs

OPTICAL SYSTEM

- Lumens:** Up to 5920 lumens
- Wattage:** Up to 38W
- Efficacy:** Up to 144 LPW
- CCT:** 3500K/4000K/5000K (Field Switchable)
- CRI:** 80+, R9>0

ELECTRICAL

- Input Voltage:** 120-277V
- Input Frequency:** 50/60Hz
- Standard Dimming Control:** 0-10V, Dimming
- Power Factor (PF)*:** > 0.90
- Total Harmonic Distortion (THD)*:** <20%

* PF and THD may vary with options

CONTROLS

Dimming: Standard - 0-10V, Dimming

AMBIENT TEMPERATURE

TYPE	TEMPERATURE RATE
OPERATING TEMPERATURE	0°C TO +25° C

LUMEN MAINTENANCE

LXX(10K) @ Hours 50,000 HR
L70

MOUNTING

- Surface Mount w/ pre-drilled mounting holes
- Drivers and internal components accessed via bottom of luminaire.
- Ideal for industrial and commercial applications as well as stairwells, offices, and storage locations.

DESIGN LIFE & WARRANTY

- Damp Location rated
- UL/cUL Certified
- RoHS compliant
- ANSI C82.77 Compliant
- Current's Limited 5-year Warranty:
Please refer to document **IND599** for more information.

PRELIMINARY

Lumination® LWS Series

ProLine® Switchable Wrap Surface Mount
2ft & 4ft Narrow and Wide

Ordering Information

CUSTOMER NAME

Project Name _____

Date _____ Type _____

Catalog Number _____

Ordering Information

LWS **A** **0** **MM** **8XX** **VQ** **SM** **WHITE**

FAMILY	FIXTURE TYPE	GENERATION	VOLTAGE	NOMINAL LUMENS	DISTRIBUTION	CRI/CCT	CONTROLS	MOUNTING	FINISH	OPTIONS
LWS = Lumination® Wrap Mount Switchable	2N = 2' Narrow (7") 2W = 2' Wide (14") 4N = 4' Narrow (7") 4W = 4' Wide (14")	A = 1 st Generation	0 = 120-277V	3X = 2' Nominal Lumen Level 4X = 4' Nominal Lumen Level (middle is default)	MM = Medium Lambertian Frosted Diffuser	8 = 80 CRI 3500/4000/5000K Switchable (4000K is default)	VQ = 0-10V (10%) Dimming	SM = Surface Mount	WHITE = White	(blank) = None



EXAMPLE CONFIGURATIONS	DIMENSION	LUMINAIRE LUMENS (@4000K & SWITCHABLE)	LUMINAIRE TOTAL SYSTEM WATTS	EFFICACY (LPW)
LWS2NA03XMM8XXVQSMWHITE	2N = 2' Narrow (7")	2520/3880/4580	20/32/38	126/121/121
LWS2WA03XMM8XXVQSMWHITE	2W = 2' Wide (14")	2750/4280/5040	20/32/38	138/134/133
LWS4NA04XMM8XXVQSMWHITE	4N = 4' Narrow (7")	2540/4040/4800	20/32/38	127/126/126
LWS4WA04XMM8XXVQSMWHITE	4W = 4' Wide (14")	2880/4470/5290	20/32/38	144/140/139

PRELIMINARY. DATA SUBJECT TO CHANGE.

PRELIMINARY

Lumination® LWS Series

ProLine® Switchable Wrap Surface Mount
2ft & 4ft Narrow and Wide

Dimensions

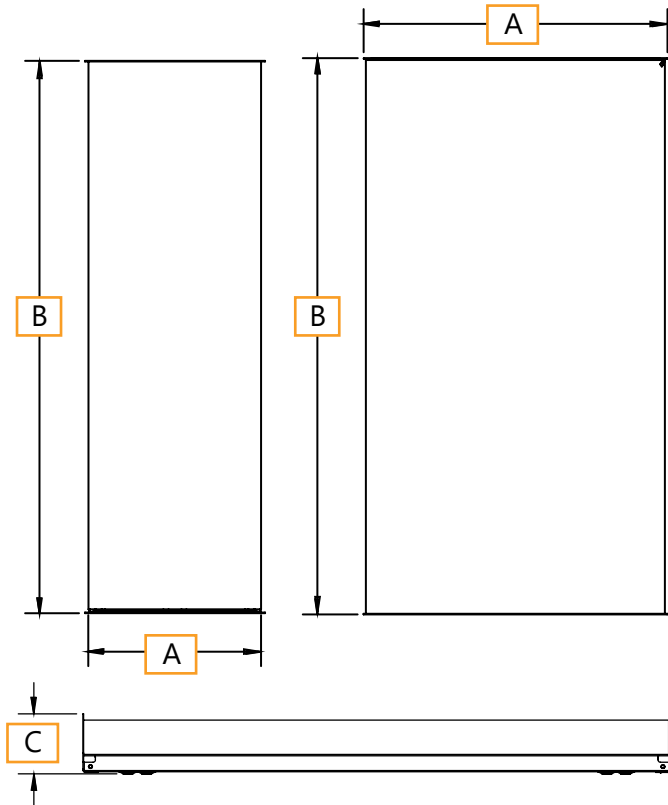
CUSTOMER NAME

Project Name _____

Date _____ Type _____

Catalog Number _____

DIMENSIONS



DIMENSIONS

2N = 2' Narrow (7")	A = 8 in (177.8mm) B = 24 in (609.6mm) C = 2.5 in (63.5mm)
2W = 2' Wide (14")	A = 13 in (355.6mm) B = 24 in (609.6mm) C = 2.5 in (63.5mm)
4N = 4' Narrow (7")	A = 8 in (177.8mm) B = 48 in (1219.2mm) C = 2.5 in (63.5mm)
4W = 4' Wide (14")	A = 13 in (355.6mm) B = 48 in (1219.2mm) C = 2.5 in (63.5mm)

PRELIMINARY

Lumination® LWS Series

ProLine® Switchable Wrap Surface Mount
2ft & 4ft Narrow and Wide

Options

AGENT/DISTRIBUTOR NAME-LOGO

Project Name _____

Date _____ Type _____

Catalog Number _____

DAINTREE CONTROLS

Daintree® Wireless Controls:

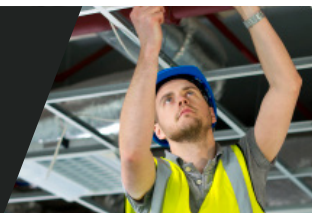
There is no one size fits all for wireless controls. Some networks want simple solutions that reduce energy consumption and meet code compliance while others are more ambitious, looking to capitalize on the LED and controls savings to fund a scalable, enterprise-grade, internet of things solution. The advantage of the Daintree® Wireless platform is its ability to integrate into indoor, outdoor and high bay environments. The Daintree® Wireless Controls provide the infrastructure to future proof your buildings, easily upgrade to Networked solutions and provide the ability to integrate into IoT solutions that are right for your business.

- **Daintree® One:** Standalone Wireless Controls
- **Daintree® EZ Connect:** Room-Based Wireless Lighting Controls
- **Daintree® Networked:** Networked Lighting Controls for Smart Building & IoT Enablement.

Daintree® Wireless Controls are already integrated in your favorite Current LED fixtures. Integrating the controls into the fixture cuts labor costs considerably since the sensors are already embedded in the lighting fixtures. There's no need to get above the ceiling plenum and install additional devices. Visit our website <https://products.gecurrent.com> for a complete list of LED Fixtures.

ProLine®

Every contractor deserves a
Fast, Reliable, and Trusted Lighting Partner



For Product or Technical Questions:

Email: lightingproinfo@gecurrent.com

Phone: +1 888 694 3533, option 2

GE current
a Daintree company

www.gecurrent.com

© 2021 Current Lighting Solutions, LLC. All rights reserved. GE and the GE monogram are trademarks of the General Electric Company and are used under license. Information provided is subject to change without notice. All values are design or typical values when measured under laboratory conditions.
IND628 (Rev 06/18/21)