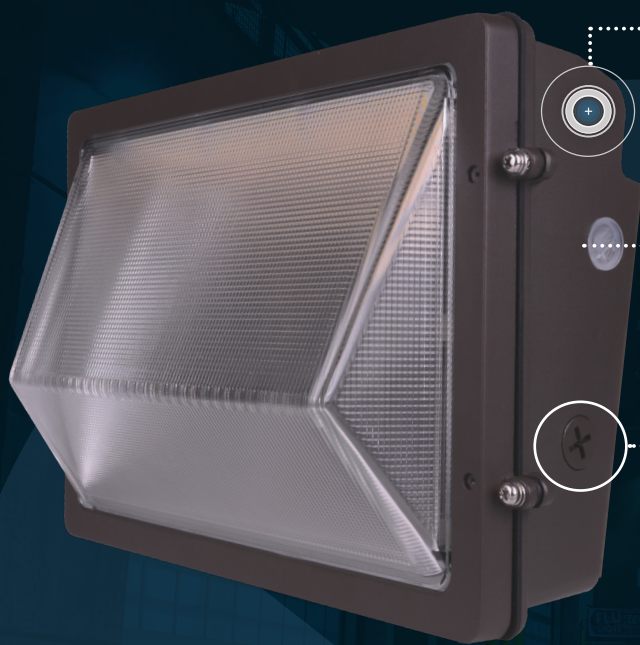


# NICOR®

# OWG4



**HINGED BACKPLATE FOR  
EASY INSTALLATION**

**INTERNAL SELECTABLE  
CCT & WATTAGE SWITCH**

**INTEGRAL PHOTOCELL  
STANDARD**



## NICOR'S NEXT GENERATION LED WALL PACK

- ☀ Selectable Wattage 60/80/100W
- ☀ Selectable CCTs 3000K/4000K/5000K
- ☀ Three knockouts for through-wiring or sensor additions
- ☀ Optional internal emergency backup

### Ordering Information

Example: OWG4100SUNVSBZ

Series	Version	Wattage	Input Voltage	CCT	Finish	Emergency
OWG	4	100S (100/80/60W)	UNV (120-277V)	S (3/4/5K)	BZ (Bronze) WH (White)	Blank (None) E08

Specifications and dimensions subject to change without notice.



### Warehouse Locations:

Albuquerque, NM    Detroit, MI  
Atlanta, GA        Roseville, CA  
Buford, GA

### Contact NICOR Lighting:

T: 800.821.6283                      2200 Midtown Pl. NE  
www.nicorlighting.com            Albuquerque, NM 87107 USA