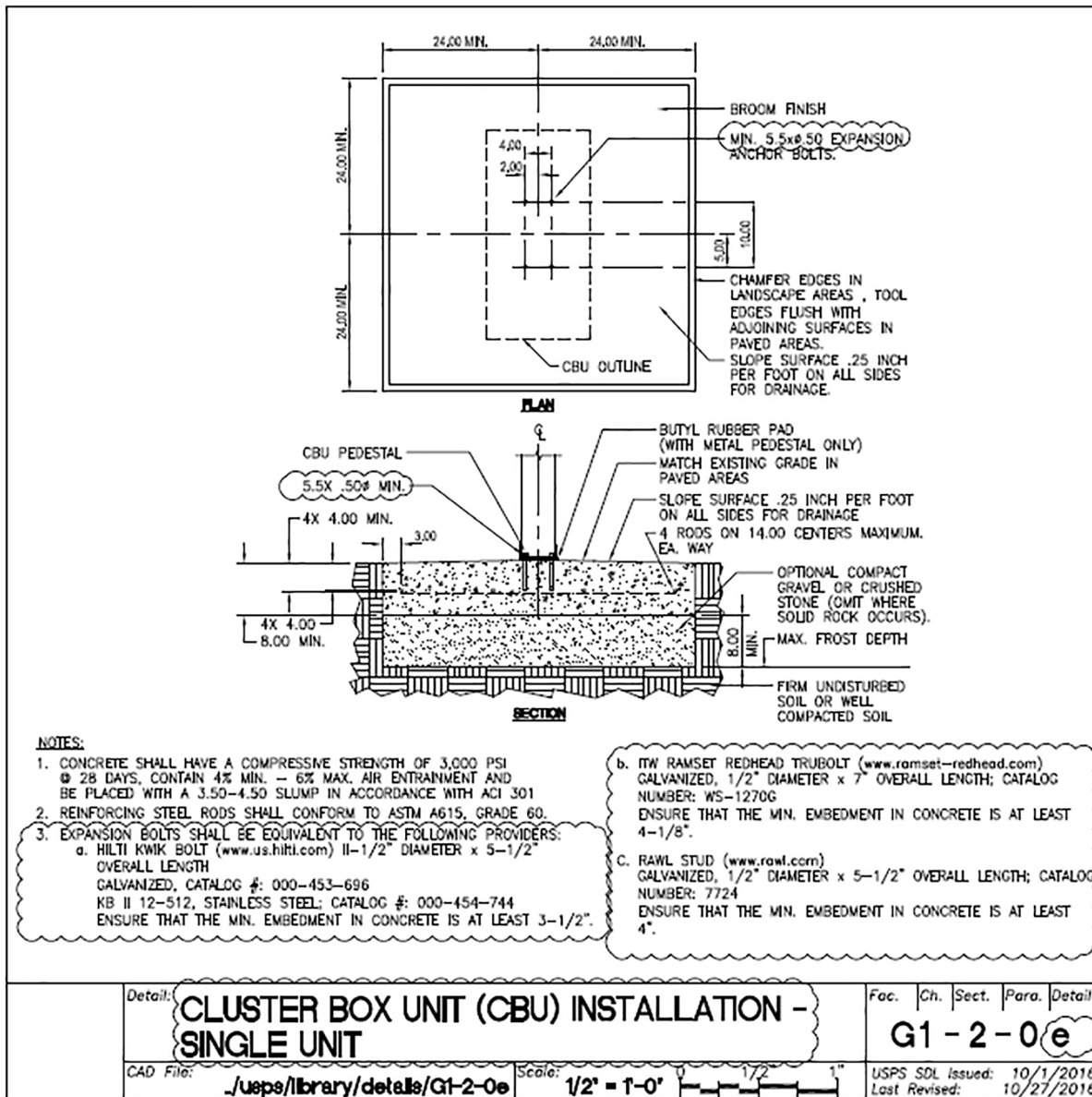


Appendix A

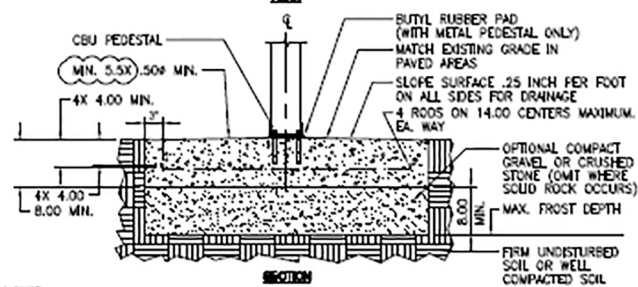
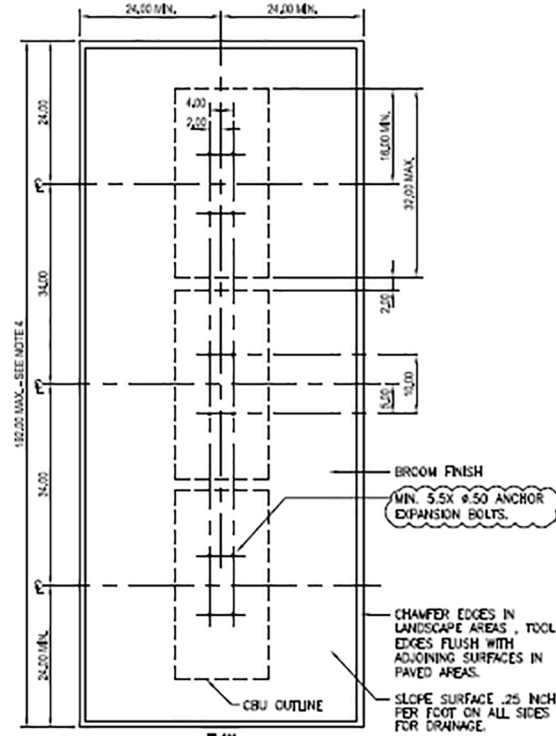
Cluster Box Unit Installation Single Unit



Appendix B

Cluster Box Unit Installation Multiple Unit

NOTES TO A/E:



- NOTES:**
1. CONCRETE SHALL HAVE A COMPRESSIVE STRENGTH OF 3,000 PSI @ 28 DAYS, CONTAIN 4% MIN. - 6% MAX. AIR ENTRAINMENT AND BE PLACED WITH A 3.50 - 4.50 SLUMP IN ACCORDANCE WITH ACI 301
 2. REINFORCING STEEL RODS SHALL CONFORM TO ASTM A512, GRADE 60
 3. EXPANSION BOLTS SHALL BE EQUIVALENT TO THE FOLLOWING PROVIDERS:
 - a. HILTI KWIK BOLT (www.us.hilti.com) 1/2" DIAMETER x 5-1/2" OVERALL LENGTH
GALVANIZED, CATALOG #: 000-453-896
KB I 12-512, STAINLESS STEEL: CATALOG #: 000-454-744
ENSURE THAT THE MIN. EMBEDMENT IN CONCRETE IS AT LEAST 3-1/2".
 - b. ITW RAMSET REDHEAD TRUBOLT (www.ramset-redhead.com)
GALVANIZED, 1/2" DIAMETER x 7" OVERALL LENGTH; CATALOG NUMBER: WS-12700
ENSURE THAT THE MIN. EMBEDMENT IN CONCRETE IS AT LEAST 4-1/8".
 - c. RAWL STUD (www.rawl.com)
GALVANIZED, 1/2" DIAMETER x 5-1/2" OVERALL LENGTH; CATALOG NUMBER: 7724
ENSURE THAT THE MIN. EMBEDMENT IN CONCRETE IS AT LEAST 4".
 4. A 3 CBU CONFIGURATION IS DEPICTED. A 2 OR 4 CBU CONFIGURATION MAY BE USED AS LONG AS THEY ARE ARRANGED IN GROUPS SUCH THAT THE OVERALL DIMENSION OF THE CONCRETE BASE DOES NOT EXCEED 16 FEET.

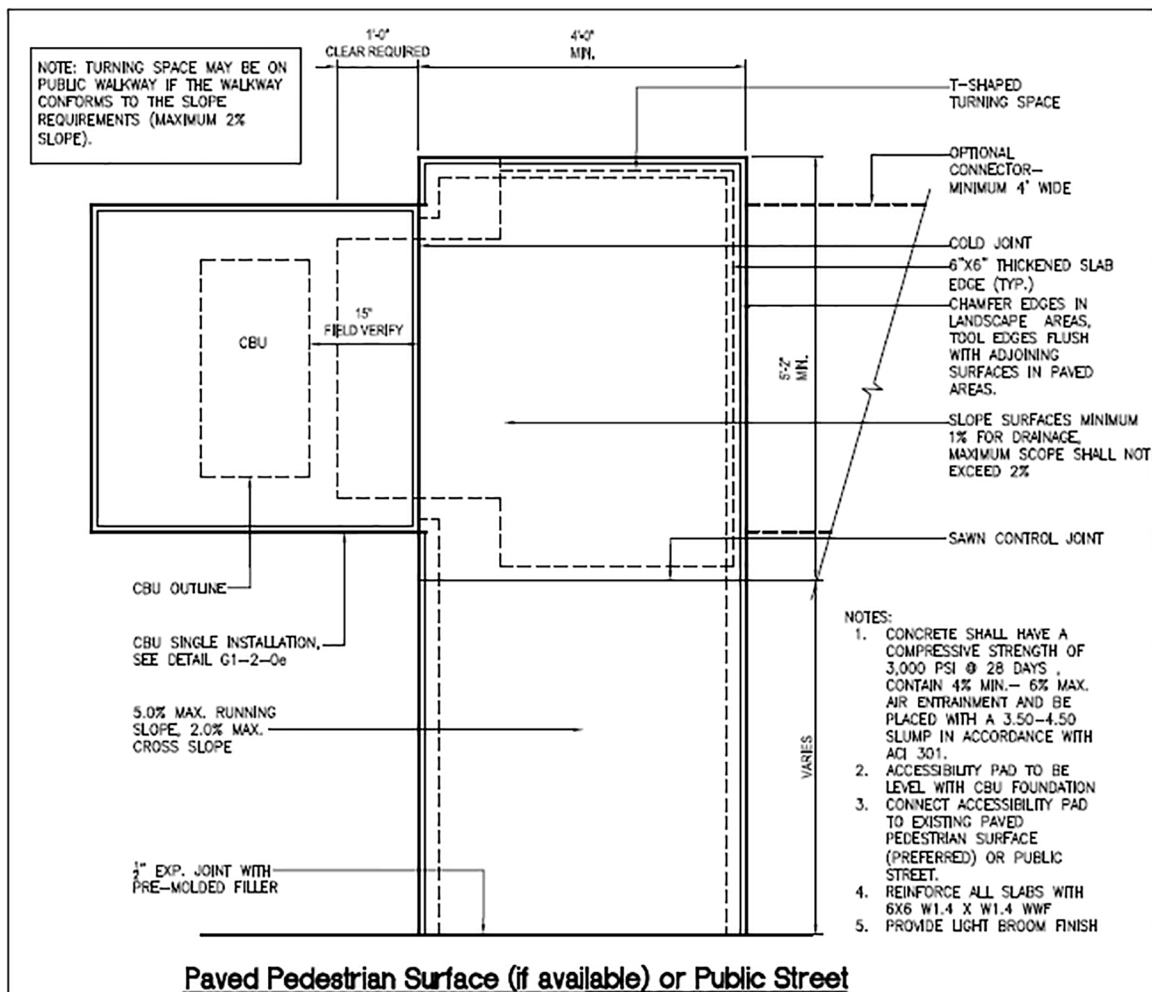
Detail:	CLUSTER BOX UNIT (CBU) INSTALLATION - MULTIPLE UNIT				Fac.	Ch.	Sect.	Para.	Detail
					G1-2-0 e1				
CAD File:	./usps/library/details/G1-2-0e1			Scale:	1/2" = 1'-0"		0		USPS SDL Issued: 10/1/2016
								Last Revised: 10/27/2016	

Appendix C

Cluster Box Unit Access Maneuvering Space – Single Unit

NOTES TO A/E:

1. IF THE ACCESSIBLE ROUTE FROM THE CBU(S) CONNECTS WITH A STREET OR OTHER PAVED SURFACE AT A VERTICAL CURB, A CURB RAMP SHOULD BE INSTALLED IN ACCORDANCE WITH RE-4 REQUIREMENTS.



Detail: **CLUSTER BOX UNIT (CBU) ACCESS MANEUVERING SPACE - SINGLE UNIT**

Fac.	Ch.	Sect.	Para.	Detail
				G1-2-0(e2)

CAD File: [\usps\library\details\G1-2-0e2.dwg](#)

Scale: 1/2" = 1'-0"

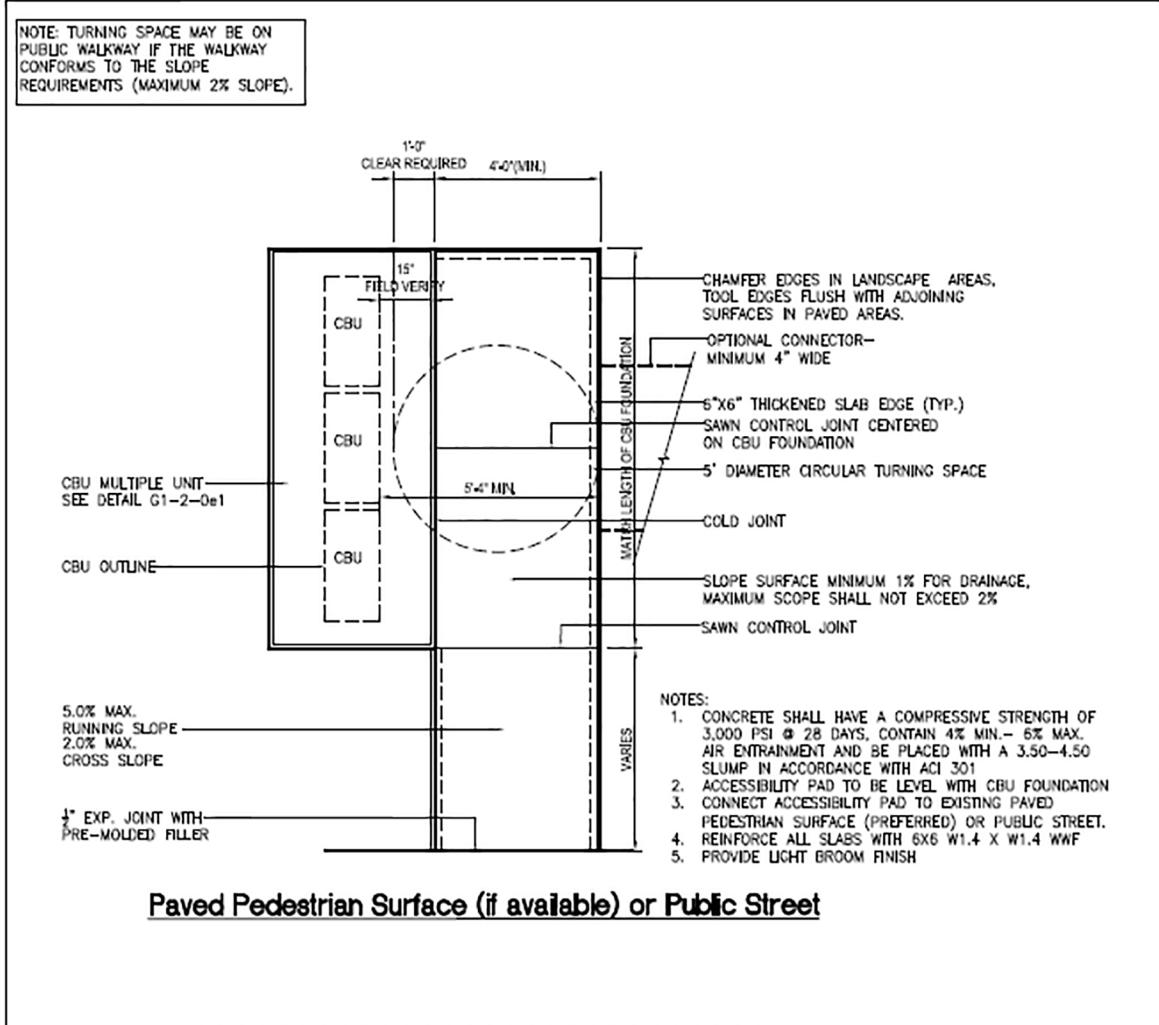
USPS SDL Issued: 10/1/2016
Last Revised: 7/14/2016

Appendix D

Cluster Box Unit Access Maneuvering Space – Multiple Unit

NOTES TO A/E:

1. IF THE ACCESSIBLE ROUTE FROM THE CBU(S) CONNECTS WITH A STREET OR OTHER PAVED SURFACE AT A VERTICAL CURB, A CURB RAMP SHOULD BE INSTALLED IN ACCORDANCE WITH RE-4 REQUIREMENTS.



Detail	CLUSTER BOX UNIT (CBU) ACCESS MANEUVERING SPACE – MULTIPLE UNIT				Fac.	Ch.	Sec.	Para.	Detail
					G1-2-0 e3				
CAD File:	..\\usps\\library\\details\\G1-2-0e3.dwg			Scale:	1/4"=1'-0"		0 1/2" 1"		USPS SDL Issued: 10/1/2016 Last Revised: 7/14/2016