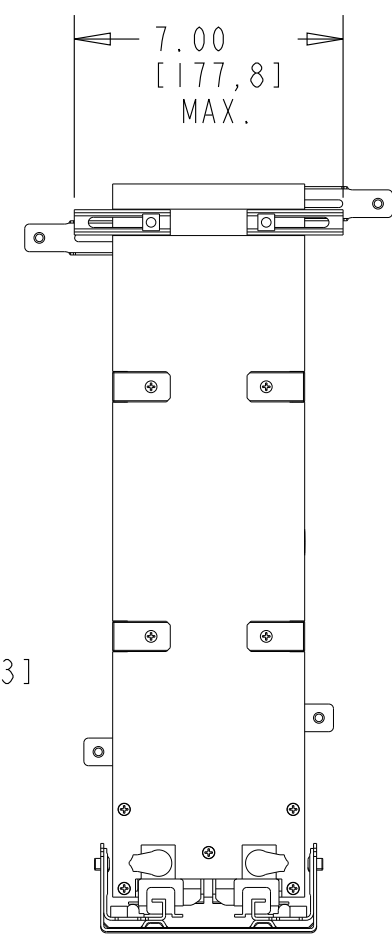
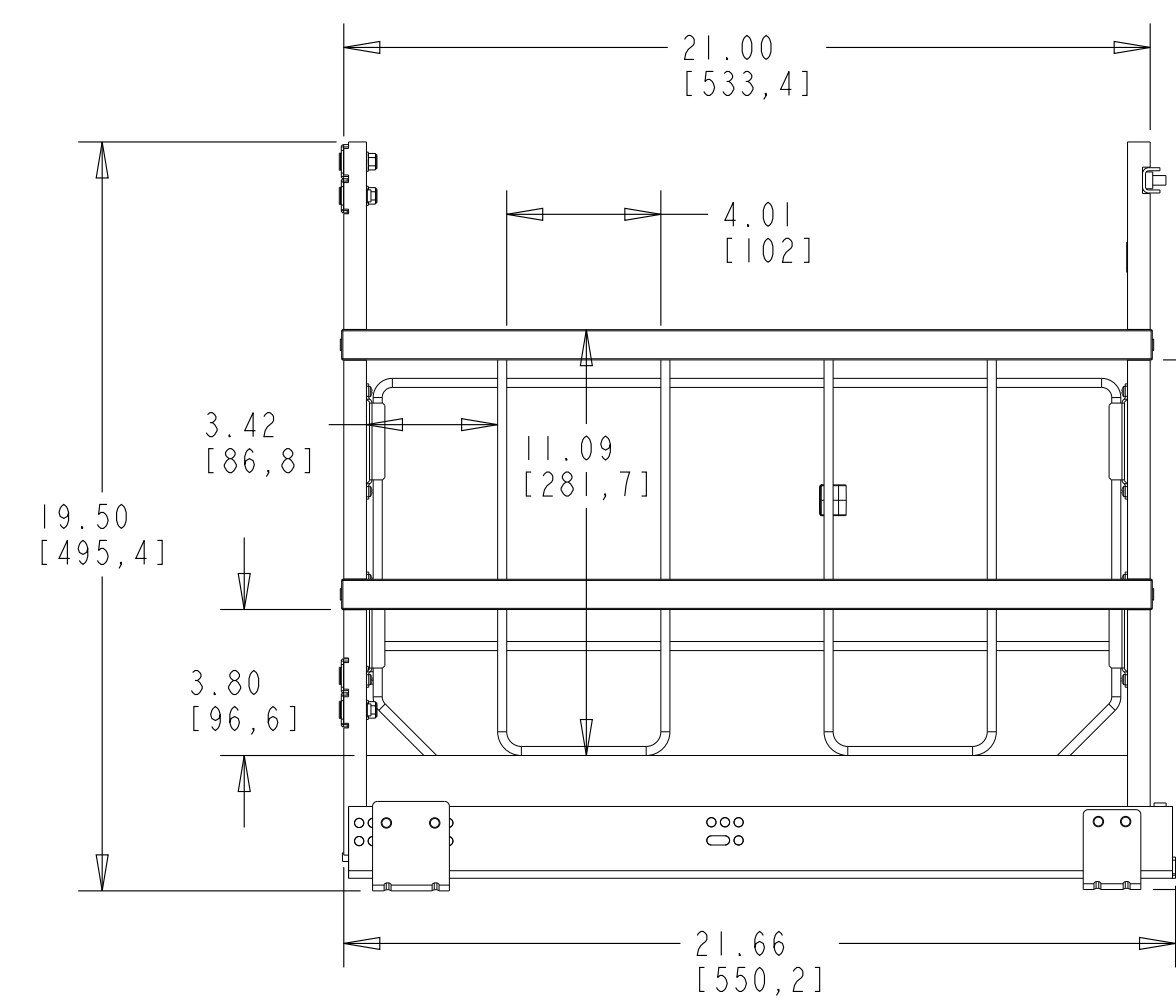
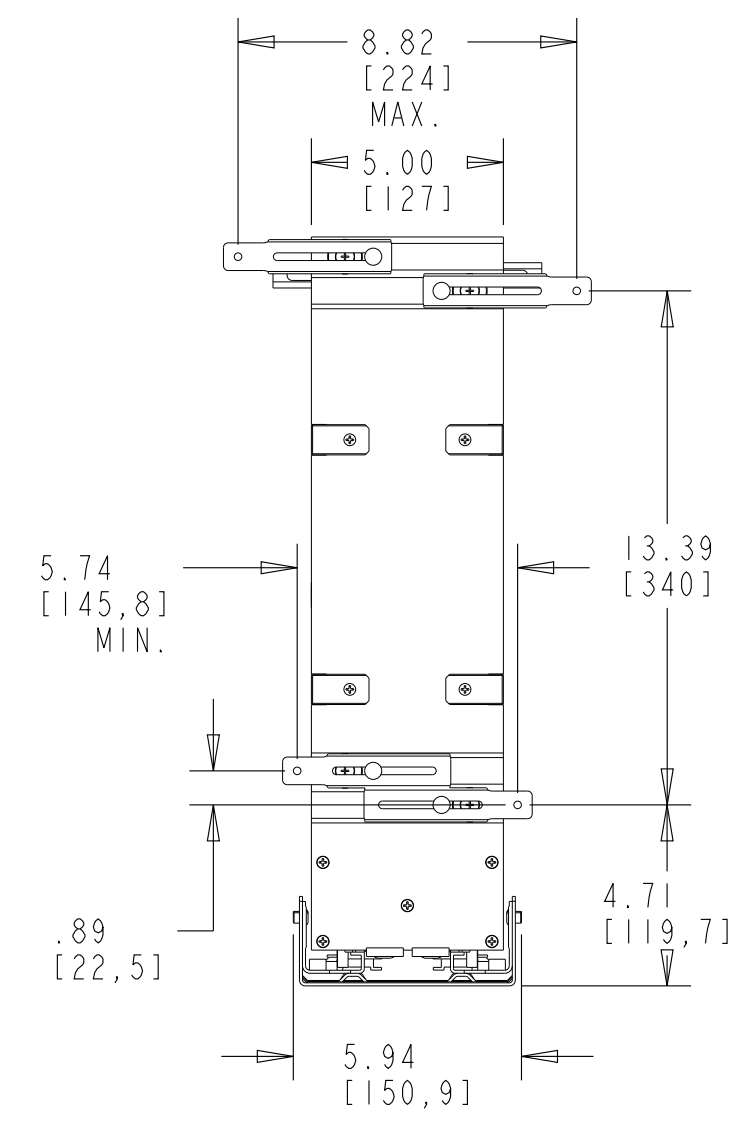


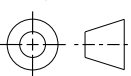
HOLDER SNAPS TO ANY VERTICAL WIRE TO KEEP FOIL BOXES FROM TIPPING OVER

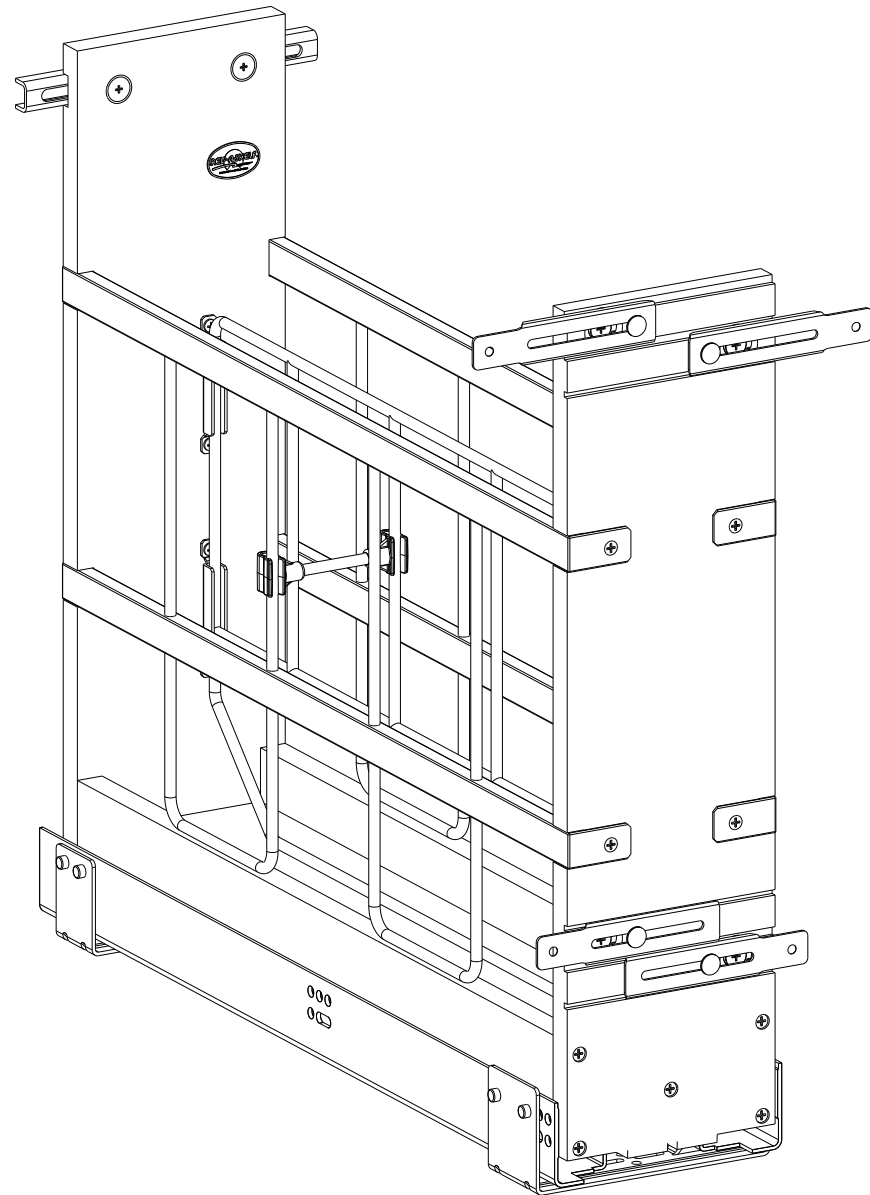


CUSTOMER DRAWING

This drawing is the property of Rev-A-Shelf (RAS) and is disclosed in confidence to the extent its subject matter is original to RAS. Any vendor receiving this drawing from RAS shall hold and use this drawing for the sole benefit of RAS and shall not disclose it to, or use or reproduce it for any third party, or perform any act adverse to the interest of RAS with respect to this drawing without the express written permission of RAS. Vendors shall not revise any physical, dimensional or performance characteristic unless authorized by Rev-A-Shelf Engineering.

REV.	DATE	BY	DESCRIPTION OF CHANGE

INCH [MM]	AMERICAN PROJECTION 		BY	DATE	REV-A-SHELF [®] , INC.	
		DRAWN	PFC	1/2/20	SIZE B	5" 447 PULL OUT
TOLERANCES MAT. DEC. (WOOD) .XX ±.03 [.8mm] (OTHER) .XX ±.02 [.5mm] (ALL) .XXX ±.005 [.13 mm] FRACTIONS ±1/32 [.8 mm]			MATERIAL		DRAWING NO. 447-BCSC-5C	SCALE 0.200
			FINISH		PART NO. 447-BCSC-5C	SHEET 1 OF 2




PART DIMENSIONS	
WIDTH	5.94 [150,9]
DEPTH	21.66 [550,2]
HEIGHT	19.50 [495,4]

MIN CABINET OPENING				
	FACE FRAME	FRAMELESS	INSET FACE FRAME	INSET FRAMELESS
WIDTH	5.50 [139,7]	6.00 [152,4]	5.50 [139,7]	6.00 [152,4]
DEPTH	21.66 [550,2]	21.66 [550,2]	22.41 [569,2]	22.41 [569,2]
HEIGHT	19.75 [501,7]	19.75 [501,7]	19.75 [501,7]	19.75 [501,7]

SLIDE SPECIFICATIONS				
SLIDE TYPE	UNDERMOUNT	SLIDE EXTENSION	FULL	MAX WEIGHT RATING
SLIDE CLOSING	SELF/SOFT	SLIDE LENGTH	21.50	
SLIDE MOUNTING	BOTTOM	SLIDE FINISH	ZINC	

CUSTOMER DRAWING

This drawing is the property of Rev-A-Shelf (RAS) and is disclosed in confidence to the extent its subject matter is original to RAS. Any vendor receiving this drawing from RAS shall hold and use this drawing for the sole benefit of RAS and shall not disclose it to, or use or reproduce it for any third party, or perform any act adverse to the interest of RAS with respect to this drawing without the express written permission of RAS. Vendors shall not revise any physical, dimensional or performance characteristic unless authorized by Rev-A-Shelf Engineering.

				INCH [MM]		DRAWN	11C	2 21 11	SIZE B	5" 447 PULL OUT		
				TOLERANCES		ANGLES ±1/2°	MATERIAL		DRAWING NO. 447-BCSC-5C		SCALE 0.250	
				MAT. DEC. (WOOD) .XX ±.03 [.8mm] (OTHER) .XX ±.02 [.5mm] (ALL) .XXX ±.005 [.13 mm] FRACTIONS ±1/32 [.8 mm]			FINISH		PART NO. 447-BCSC-5C		SHEET 2 OF 2	
REV.	DATE	BY	DESCRIPTION OF CHANGE									