

# IMS3PIR

## IMS Enabled DALI-2 Occupancy Sensor

### Product Description

The IMS3PIR is a compact, high performance, DALI-2 sensor that mount on ceilings. This sensor provides presence detection and lighting control. The sensor is equipped with movement detection (PIR) and light intensity (daylight) measurement capability giving it the ability to work in daylight harvesting applications.

#### Construction

- 3.27" x 0.83" (83mm x 21mm)
- Housing of ABS material
- Integrated mounting arms

#### Electrical

- Powered via DALI bus (DALI-voltage according to IEC62386 (2014))
- Current Consumption (Max) - 6mA
- Connection 2-wire, un-Polarized
- Motion detection LED (Red flashing)
- DALI signal communication LED (Green flashing)

#### Sensing

- Motion detection through PIR technology
- Detection angle: 130°
- Photocell range 0-1000lux, 10lux resolution

#### Environmental

- Operating Temp 32°F to 104°F (0°C to 40°C)
- Relative Humidity 0-95% non-condensing
- For indoor use only

#### Mounting and Installation

- Requires mounting hole of 2.75"-2.87" (70-73mm)
- Provided with spring terminal connector for connection to DALI bus.
- Terminals handle 26-16 AWG wire
- Wire strip length 0.28-0.35 in. (7-9mm)
- Do not install with power applied to device

#### Listings

- RoHS Compliant
- DALI Alliance certified

#### Warranty

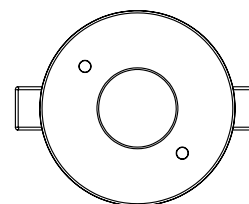
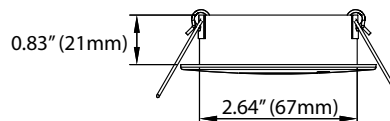
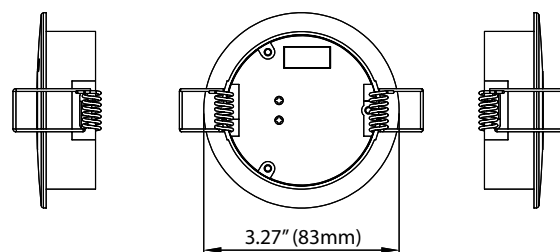
- 3-year limited system warranty
- Warranty does not cover product failure due to an overvoltage event (power surge)

Project

Catalog

Type

Date



### Ordering Information

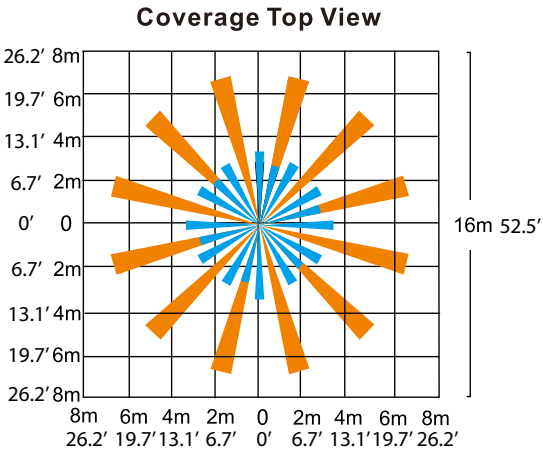
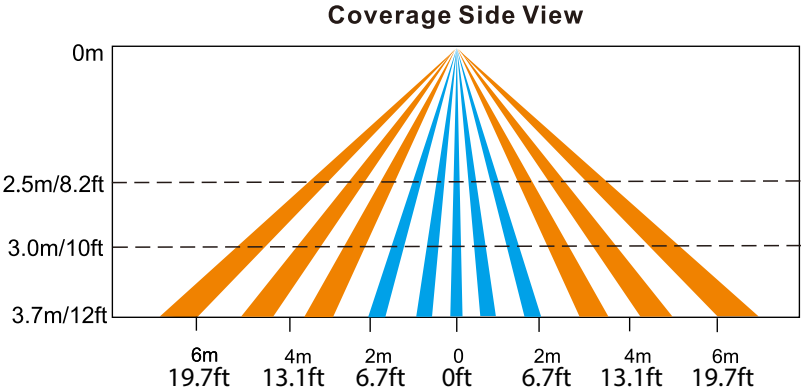
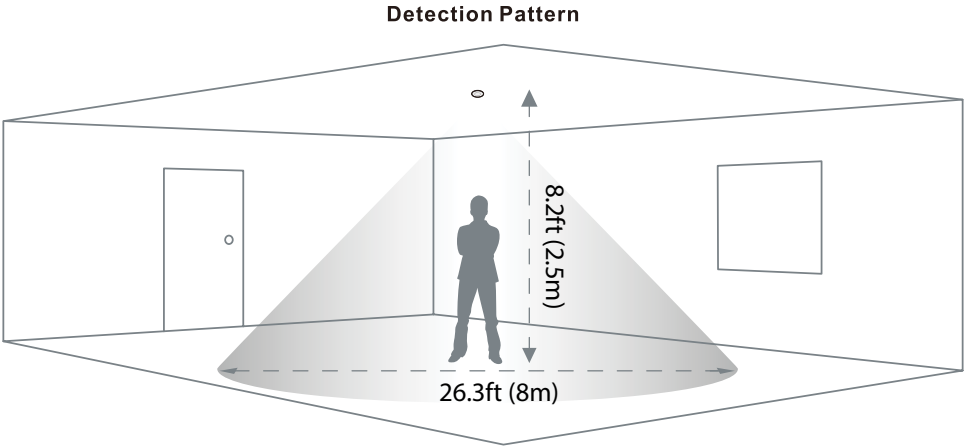
#### Series

IMS3PIR (DALI 2 Surface mount, ceiling PIR occupancy sensor)



IMS3PIR

IMS Enabled DALI-2 Occupancy Sensor



The detection area for movement sensor can be roughly divided into two parts:

- Slow movement (person moving < 1.0'/s or 0.3m/s)
- Quick movement (person moving > 1.3'/s or 0.4m/s)

