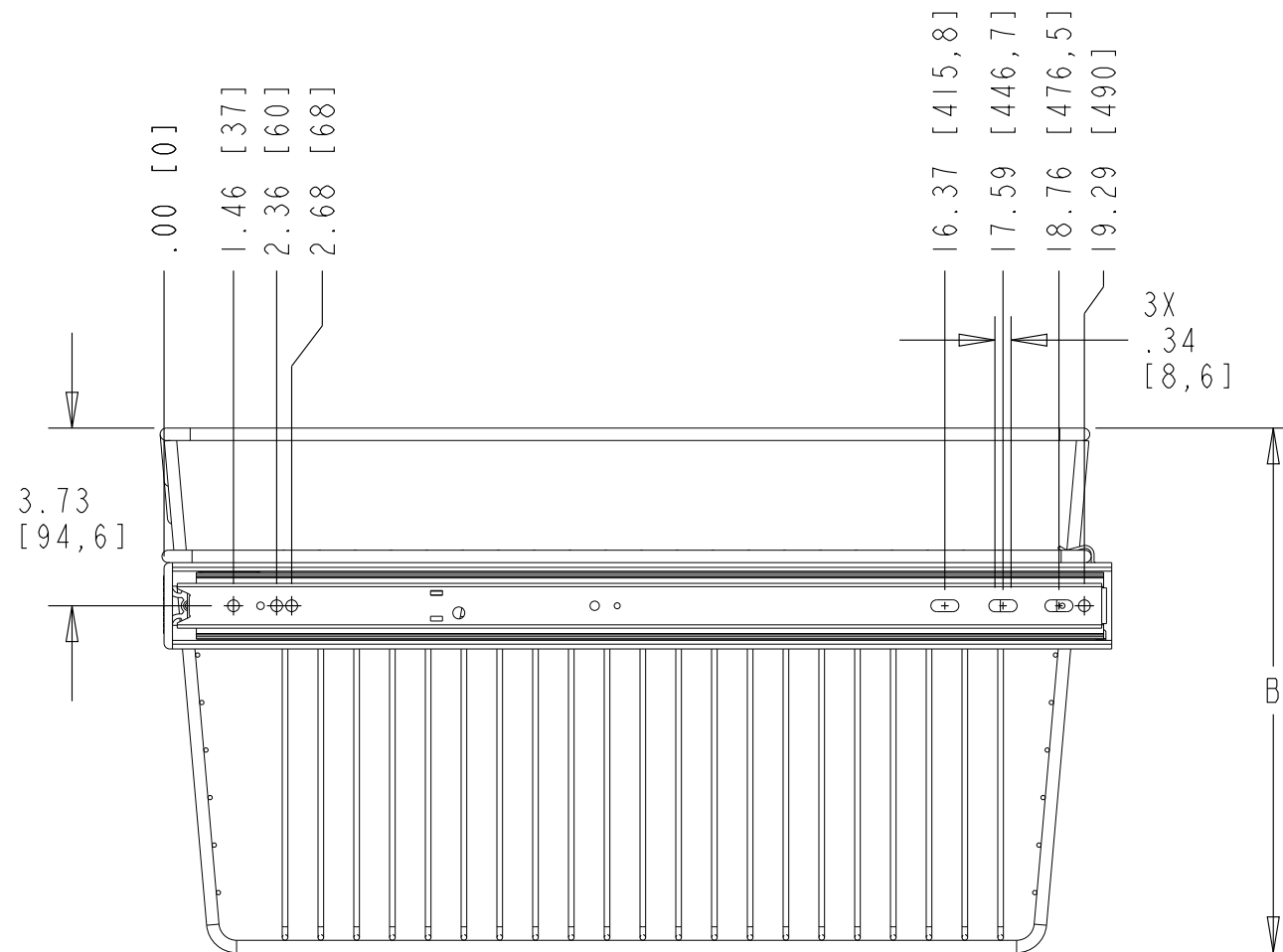


PART NUMBER	WIDTH "A"	HEIGHT "B"
CB-182007CR-*	18.00 [457,2]	7.00 [117,8]
CB-182011CR-*	18.00 [457,2]	11.00 [279,4]
CB-182018CR-*	18.00 [457,2]	18.00 [457,2]
CB-242007CR-*	24.00 [609,6]	7.00 [117,8]
CB-242011CR-*	24.00 [609,6]	11.00 [279,4]
CB-242018CR-*	24.00 [609,6]	18.00 [457,2]

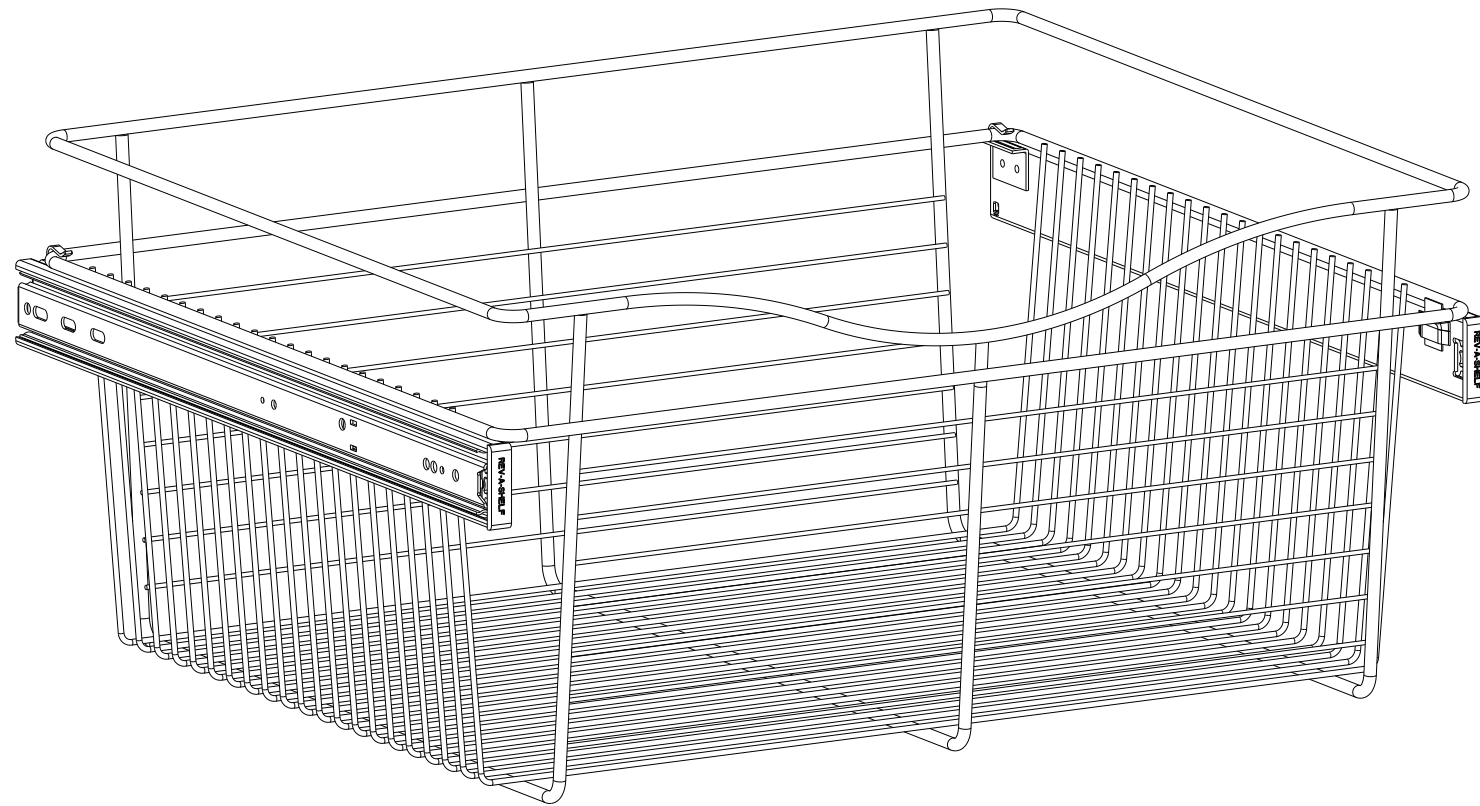
\* NUMBER OF BASKETS: 1 FOR A SINGLE BASKET  
3 FOR 3 BASKETS



This drawing is the property of Rev-A-Shelf (RAS) and is disclosed in confidence to the extent its subject matter is original to RAS. Any vendor receiving this drawing from RAS shall hold and use this drawing for the sole benefit of RAS and shall not disclose it to, or use or reproduce it for any third party, or perform any act adverse to the interest of RAS with respect to this drawing without the express written permission of RAS. Vendors shall not revise any physical, dimensional or performance characteristic unless authorized by Rev-A-Shelf Engineering.

REV.	DATE	BY	DESCRIPTION OF CHANGE

INCH [MM]	AMERICAN PROJECTION	DRAWN	BY	DATE	REV-A-SHELF, INC.
			KRR	6-19-20	
TOLERANCES			MATERIAL	DRAWING NO.	SCALE
MAT. DEC. (WOOD) .XX ±.03 [8mm] (OTHER) .XX ±.02 [5mm] (ALL) .XXX ±.005 [13 mm] FRACTIONS ±1/32 [8 mm]			FINISH	CB-XX20XXCR-X-CUST	0.250
				PART NO.	SHEET OF
				SEE CHART	1 2



PART DIMENSIONS	
WIDTH	DIM "A" (SHT.1)
DEPTH	19.95 [506,7]
HEIGHT	DIM "B" (SHT.1)

MIN CABINET OPENING	
WIDTH	DIM "A" (SHT.1)
DEPTH	20.00 [508]
HEIGHT	DIM "B" +.50 (SHT.1)

SLIDE SPECIFICATIONS				
SLIDE TYPE	BALL BEARING	SLIDE EXTENSION	FULL	MAX WEIGHT RATING
SLIDE CLOSING	NORMAL	SLIDE LENGTH	19.68 [500 MM]	
SLIDE MOUNTING	SIDE	SLIDE FINISH	ZINC	100 LB

CUSTOMER DRAWING

This drawing is the property of Rev-A-Shelf (RAS) and is disclosed in confidence to the extent its subject matter is original to RAS. Any vendor receiving this drawing from RAS shall hold and use this drawing for the sole benefit of RAS and shall not disclose it to, or use or reproduce it for any third party, or perform any act adverse to the interest of RAS with respect to this drawing without the express written permission of RAS. Vendors shall not revise any physical, dimensional or performance characteristic unless authorized by Rev-A-Shelf Engineering.

REV.	DATE	BY	DESCRIPTION OF CHANGE

INCH [MM]	AMERICAN PROJECTION	DRAWN	BY	DATE	REV-A-SHELF, INC.
			KRR	6-19-20	
TOLERANCES		MATERIAL	DRAWING NO.		SCALE
DECIMALS	ANGLES		CB-XX20XXCR-X_CUST		
.XX ±.02 [.5mm]	±1/2°	FINISH	PART NO.		SHEET OF
.XXX ±.005 [.13 mm]			SEE CHART		
FRACTIONS ±1/32 [.8 mm]					