

12VDC
24VDC

Infinex

Infinex is the innovative, patented, LED aluminum extrusion system by Tresco Lighting. Gone are the days of set fixture sizes, simply choose your style, cut to desired length and assemble to create a customized LED fixture. Designed by our in-house engineers and made in the USA, Infinex carries a UL safety certification and is available in six profiles with an array of installation options.

Infinex is designed for easy DIY application. We also offer prefabricated custom solutions with a minimum quantity order.

US PATENT NO: D783,533 and 9,618,194



6 profiles to choose from



FlexTape® slides into proprietary power feed end cap



Clear, frosted and milk diffusers snap on/off for easy installation and removal.

Mounting Types:

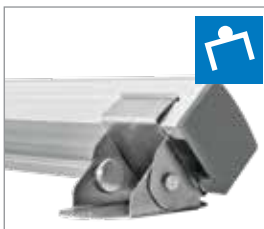
SCREW



U-CLIP



SWIVEL CLIP



MAGNET



RECESSED



See individual profiles for mounting options available



System Components



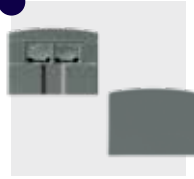
Extrusions

L-XANG72-SC-1
L-XANG72-**-1
L-XCRV72-SC-1
L-XCRV72-**-1
L-XREC72-SC-1
L-XREC94-SC-1
L-XREC72-BL-1
L-XREC94-BL-1
L-XRND72-SC-1
L-XRND72-BL-1
L-XSQR72-SC-1
L-XSQR72-**-1
L-XFL72-SC-1
L-XFL94-SC-1



Diffusers

L-X72-DIFF-CL-1
L-X72-DIFF-FR-1
L-X72-DIFF-MLK-1



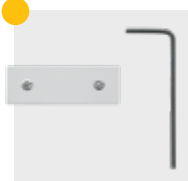
End Cap Sets

L-XANGECP-GY-1
L-XANGECP-**-1
L-XCRVECP-GY-1
L-XCRVECP-**-1
L-XRECECP-GY-1
L-XRECECP-BL-1
L-XRNDECP-GY-1
L-XRNDECP-BL-1
L-XSQRECP-GY-1
L-XSQRECP-**-1



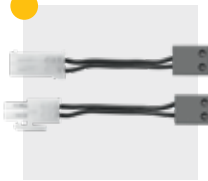
Starter Cord

12VDC:
L-XPKT-2M-WH-1
L-XPKT-2IN-WH-1
L-XPKT-2M-BL-1
L-XPKT-2IN-BL-1
24VDC:
L-24XPKT-2M-BL-1
L-24XPKT-2M-WH-1



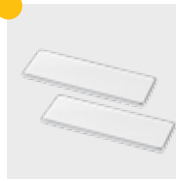
Couplers

L-EXTBTB10-1



Linking Cords

L-XLNK-15-**-1
L-XLNK-25-**-1
L-XLNK-60-**-1
L-XLNK-120-**-1
L-XLNK-180-**-1



Mounting Plates

L-EXTMP-VHB-1



U-Clips

L-XRND-UCLP-1
L-XSQR-UCLP-1
L-XSQRSWCLP-1



Magnet

L-XRM42-155-1

CUSTOM SOLUTIONS

Take control of your lighting through Tresco's custom Infinex solutions. From length, to light output, to screw versus magnetic mounting, you dictate the options of your unique fixture. Once decided, we will manufacture it in our USA headquarters. No more worries about international shipping delays or extended holidays. Every light is quality checked and bears the cULus marking denoting its safe operation. Don't settle for something "close", choose Infinex and get exactly what you want. Go to trescolighting.com to submit your project and receive a custom quote.

CUSTOM FULLY ASSEMBLED FIXTURES

NO MINIMUM REQUIREMENT

MADE IN THE U.S.A. AND SHIPS WITHIN 7 DAYS!



6 unique profiles

30 light output options

Black or white cords (multiple lengths)

4" - 96" (101 mm - 2438 mm) fixture lengths in 1/16" (1.6 mm) increments

3 diffuser options (clear, frosted, milk)

Bulk, individual, or kit packaged

No minimum quantity required

Quick turnaround

NEW! INFINEX INTEGRATED CONTROL OPTIONS



Dimmer Only



Dimmer/Motion Combo

Features:

Controls are elegantly and fully integrated into the made-to-order Infinex fixture

ON/OFF and dimming controls use a glowing digital button for easy visual recognition

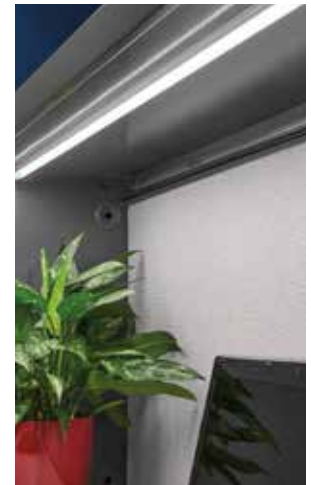
An optional fully-integrated occupancy sensor available to automatically turn the fixture off after 30-minutes of no activity or Tresco® can customize the desired time delay

Easily switch between manual and occupancy sensor modes

Returns to last setting when turned on

Typical Applications:

- Hospitality applications utilizing the integrated occupancy sensor for:
 - Hotel or hospital closet, vanity or headboard lighting
 - Task lighting for nurses' stations
- Attach under: furniture and bathroom cabinetry
- Office furniture: task lighting under overhead shelves, bins, cabinets and privacy booths
- Under residential or commercial cabinetry to illuminate a countertop and/or backsplash
- Retail: utilize the integrated occupancy sensor to turn display lighting on when customers approach



Dimmer Only

Touch ON/OFF

Gradual dimming from 100%-5%

Power failure memory (retains last setting)

10 hour automatic energy saving shutoff

Dimmer/Motion Sensor Combo

4 step dimming 100/75/50/25

30 minute preset motion sensor*

Motion sensor can be deactivated

Dimmer works in motion sensor mode or standalone mode

10 hour automatic energy saving shutoff in dimmer only mode

*Motion sensor time can be customized by Tresco® Lighting

Not sold individually for DIY Infinex

BLEND SERIES



See "At a Glance" chart for extrusion styles and finishes available



Available in a variety of finishes. Custom finishes also available

In Stock



Black (BL)



Dark Cherry (DC)



Natural Soft Maple (NSM)



Satin Nickel (SC)

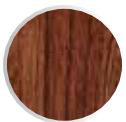


White (WH)



Sample rings available

Available with 1000 Ft. Min. Order



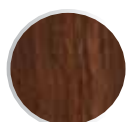
Medium Cherry



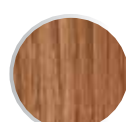
Light Cherry



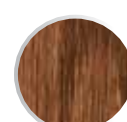
Contemporary Cherry



Walnut



Natural Oak



Dark Oak



Pear



Color Matching*

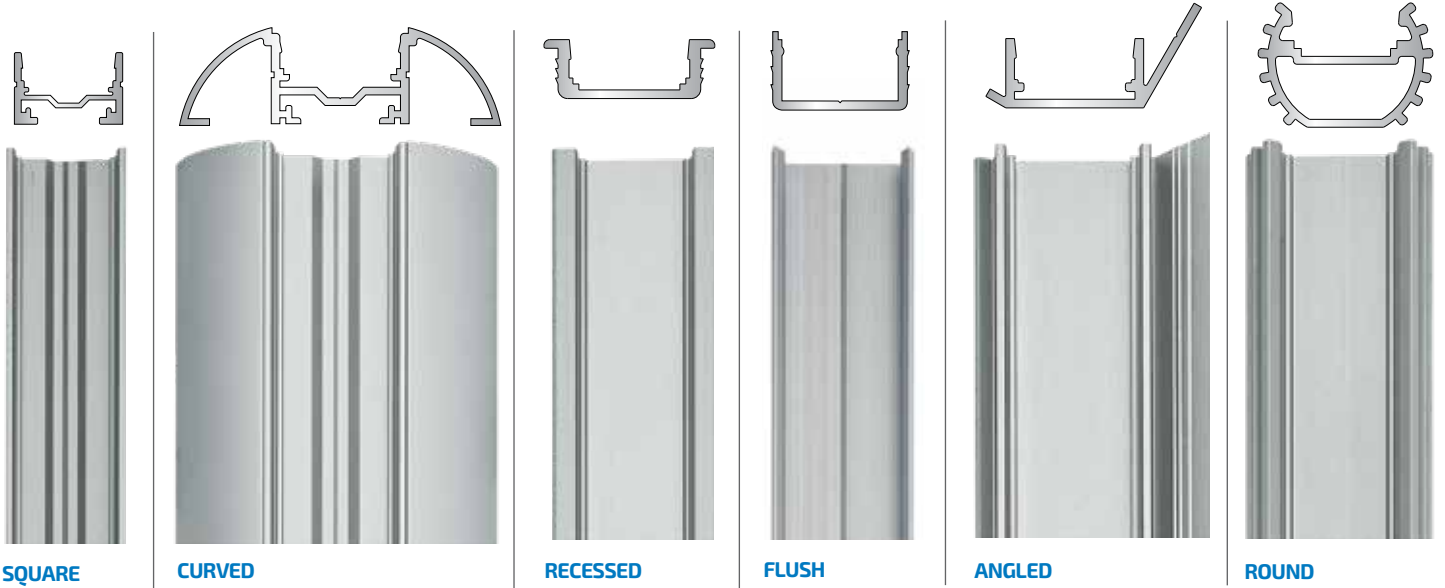
* Color Matching will match any color sample and is available with 1000 ft. minimum order

DIY INFINEX

1 DESIGN YOUR LIGHT

1a PROFILE SHAPE

6 unique profiles to choose from!



1b PICK YOUR FINISH

Available in a variety of finishes. Custom finishes also available. Not all finishes available with all shapes.



1c DIFFUSER

Clear, frosted and milk diffusers



1d LIGHT OUTPUT

Ranging from 1.5W to 5.5W



1e STARTER CORD



Infinex Starter Cord



Standard FlexTape Starter Cord for Recessed or Flush

1f MOUNTING

SCREW



U-CLIP



SWIVEL CLIP



MAGNET



RECESSED



See individual profiles for mounting options available

EXTRUSION OPTIONS AT A GLANCE



	Square	Curved	Recessed	Flush	Angled	Round
Surface Mounting	Y	Y	Y	Y	Y	Y
Recessed Mounting	N	N	Y	Y	N	N
U-Clip Mounting	Y	Y	Y	Y	N	Y
Magnet Mounting	Y	Y	N	N	N	N
Available Finishes	Satin Nickel, Black, White, Dark Cherry, Natural Soft Maple, Custom	Satin Nickel, Black, White, Dark Cherry, Natural Soft Maple, Custom	Satin Nickel, Black	Satin Nickel	Satin Nickel, Black, White, Dark Cherry, Natural Soft Maple, Custom	Satin Nickel, Black
Available Diffusers	Clear, Frost, Milk	Clear, Frost, Milk	Clear, Frost, Milk	Milk	Clear, Frost, Milk	Clear, Frost, Milk

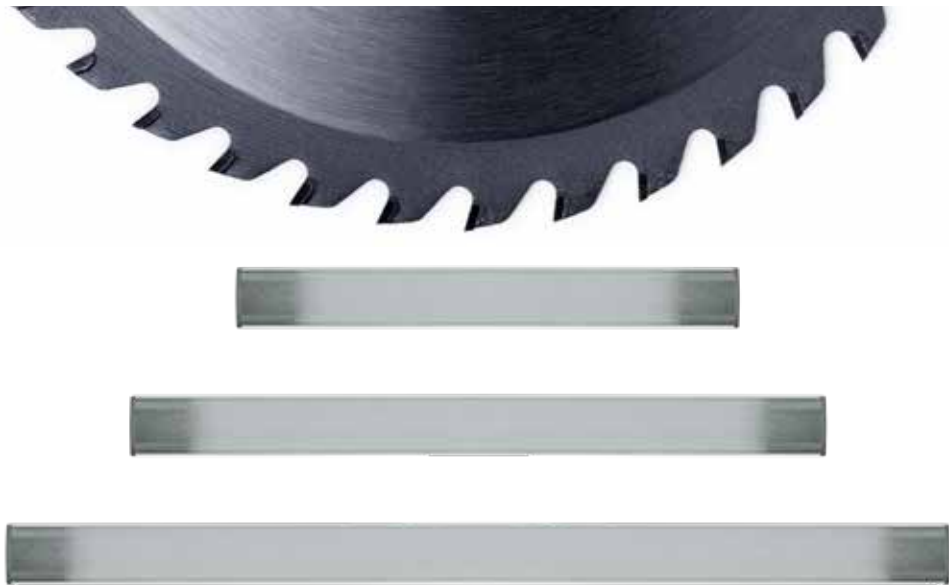


FLEXTAPE® AND DIFFUSER OPTIONS AT A GLANCE

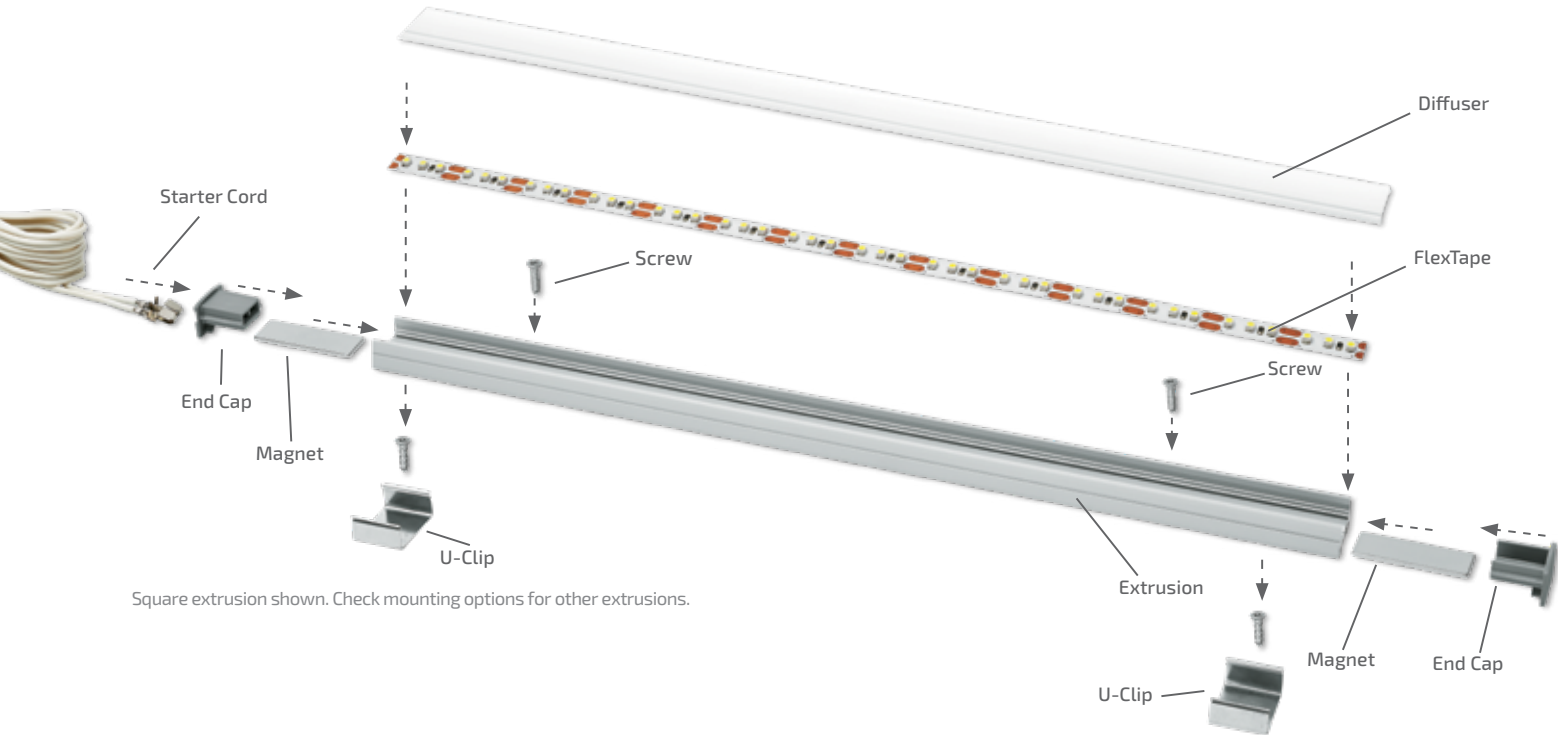
	1.5W FlexTape®	3W FlexTape®	4.4W FlexTape®	4.4W 12VDC COB FlexTape®	5.5W 24VDC COB FlexTape®	5.5W FlexTape®	1.5W EquiLine Tape	3W EquiLine Tape	4.4W EquiLine Tape
Lumens w/ Clear Infinex Diffuser	125	310	355	210	330	520	115	215	335
Lumens w/ Frosted Infinex Diffuser	115	285	325	195	305	480	105	200	310
Lumens w/ Milk Infinex Diffuser	95	235	270	160	255	395	85	165	255

2 CUT TO SIZE

Aluminum extrusions can be cut by various pieces of equipment. For the best performance and longest life, use a saw blade designed for non-ferrous, thin stock on your miter saw. It is also highly recommended to cut extrusion with diffuser securely attached via clamps, tape, stretch wrap etc. to prevent unwanted cracking of diffuser.



3 ASSEMBLE



Square extrusion shown. Check mounting options for other extrusions.

EXTRUSION STYLES AND FEATURES

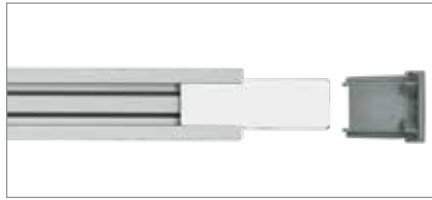
SQUARE



MOUNTING



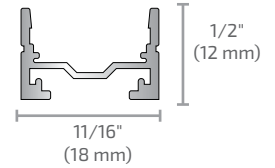
U-Clips sold separately



Couplers Sold Separately



Profile



End Caps Sold Separately

Features

Surface mount using magnets, U-Clips or screws

Easily slide magnets into channel on bottom of light

Uses Infinex starter leads

Available stock finishes



CURVE



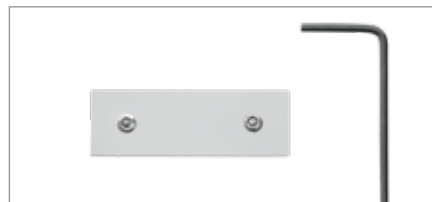
MOUNTING



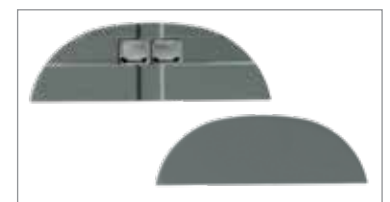
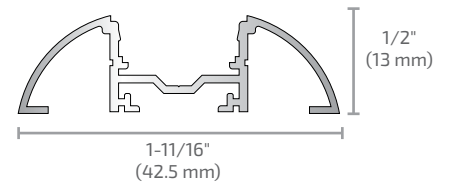
U-Clips sold separately



Couplers Sold Separately



Profile



End Caps Sold Separately

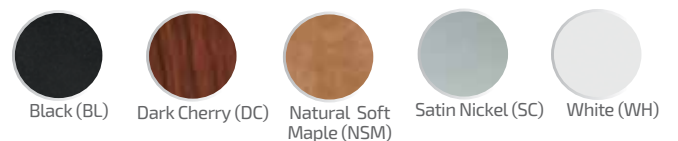
Features

Surface mount using magnets, U-Clips or screws

Easily slide magnets into channel on bottom of light

Uses Infinex starter leads

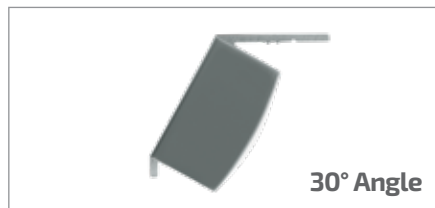
Available stock finishes



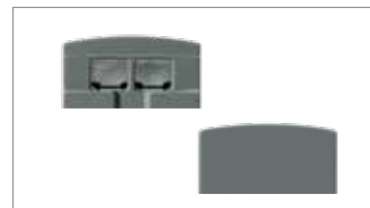
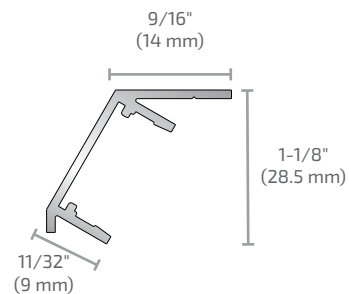
ANGLE



MOUNTING



Profile



End Caps Sold Separately

Features

For corner mounting with screws only

Fixture directs light at 30° angle

Uses Infinex starter leads

Available stock finishes



Black (BL)



Dark Cherry (DC)



Natural Soft Maple (NSM)



Satin Nickel (SC)



White (WH)

ROUND



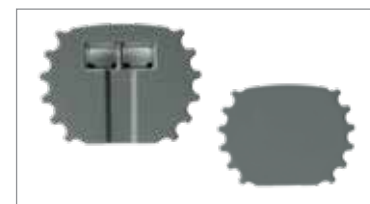
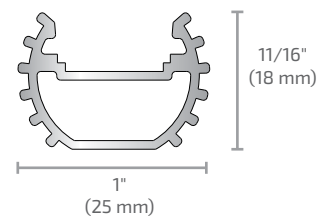
MOUNTING



U-Clips sold separately



Profile



End Caps Sold Separately

Features

U-Clip mounting allows fixture to be rotated in 15° increments either direction (30°, 15°, 0°, -15°, -30°)

Uses Infinex starter leads

Available finishes



Black



Satin Nickel

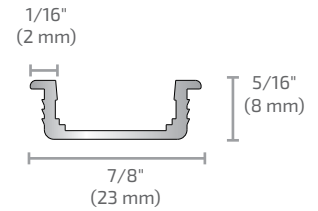
RECESSED



MOUNTING



Profile



End Caps Sold Separately

Features

Grooved sides allow extrusion to pressure fit into place*

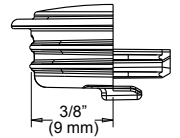
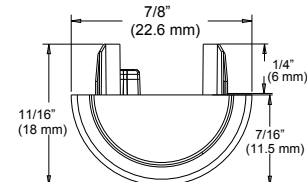
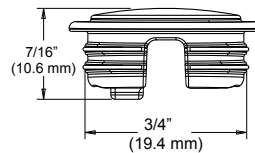
Uses standard FlexTape® starter lead

*With Endcap: Route a channel in wood 21/64" (8.33 mm) depth minimum x .750" (19 mm) width and pressure fit this extrusion in place.

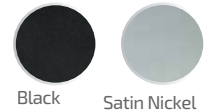
Without Endcap: Route a channel in wood 9/32" (7.14 mm) depth minimum x .750" (19 mm) width and pressure fit this extrusion in place.

Recessed extrusion uses standard FlexTape® starter lead.
(L-LED-TPEPKT-2M-1, L-24B2SPKT-2M-1)

Recessed End Cap Dimensions:



Available finishes



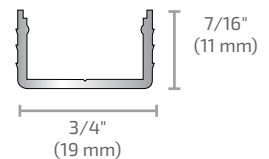
FLUSH



MOUNTING



Profile



No End Caps

Features

No end caps...this extrusion is meant for channels that go the entire width or height of the casework

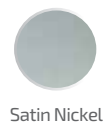
Comes with milk diffuser (unattached)

Uses standard FlexTape® starter lead

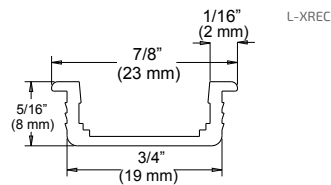
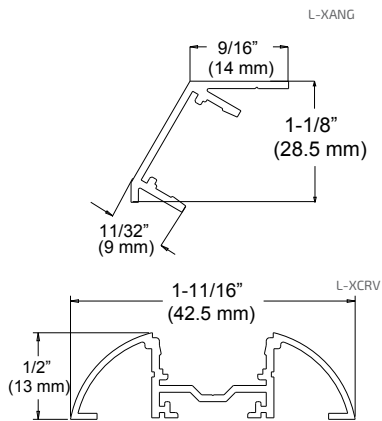
*Route a channel in wood 7/16" (11 mm) depth x 3/4" (19 mm) width and pressure fit this extrusion in place.

Flush extrusion uses standard FlexTape® starter lead.
(L-LED-TPEPKT-2M-1, L-24B2SPKT-2M-1)

Available finishes

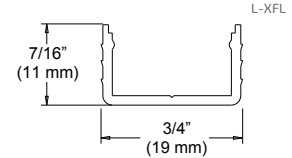
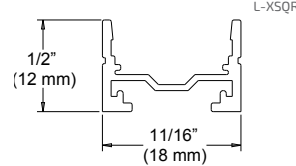
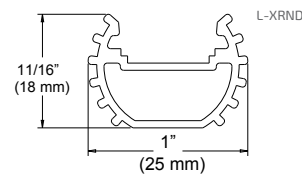


Extrusions



Part #	Description
L-XANG72-SC-1	72" (1.8 m) Angled Extrusion Satin Clear
L-XANG72-**-1	72" (1.8 m) Angled Extrusion Other Finishes
L-XCRV72-SC-1	72" (1.8 m) Curved Extrusion Satin Clear
L-XCRV72-**-1	72" (1.8 m) Curved Extrusion Other Finishes
L-XREC72-SC-1	72" (1.8 m) Recessed Extrusion Satin Clear
L-XREC94-SC-1	94" (2.4 m) Recessed Extrusion Satin Clear
L-XREC72-BL-1	72" (1.8 m) Recessed Extrusion Black
L-XREC94-BL-1	94" (2.4 m) Recessed Extrusion Black
L-XRND72-SC-1	72" (1.8 m) Round Extrusion Satin Clear
L-XRND72-BL-1	72" (1.8 m) Round Extrusion Black
L-XSQR72-SC-1	72" (1.8 m) Square Extrusion Satin Clear
L-XSQR72-**-1	72" (1.8 m) Square Extrusion Other Finishes
L-XFL72-SC-1	72" (1.8 m) Flush Extrusion Satin Clear with Milk Diffuser
L-XFL94-SC-1	94" (2.4 m) Flush Extrusion Satin Clear with Milk Diffuser

**Insert BL for Black, WH for White, DC for Dark Cherry, NSM for Natural Soft Maple



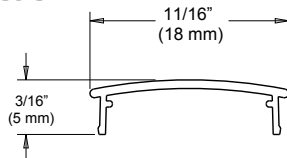
Power Supplies



For details see Power Supplies on Page 142.

Infinex works with all Tresco 12VDC and 24VDC power supplies.

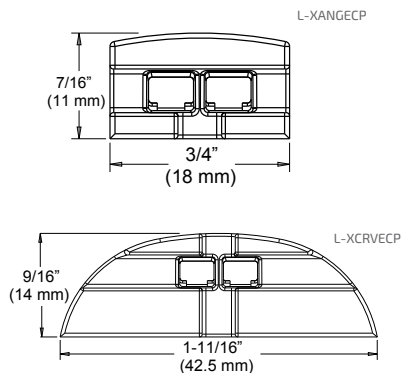
Diffusers



Part #	Description
L-X**-DIFF-CL-1	Diffuser Clear
L-X**-DIFF-FR-1	Diffuser Frosted
L-X**-DIFF-MLK-1	Diffuser Milk

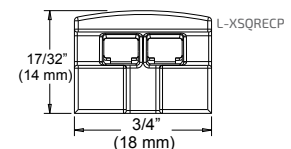
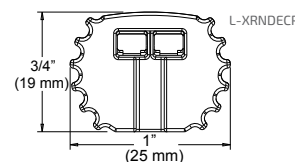
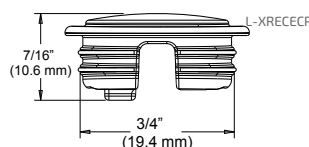
**Insert 72 for 72" (1.8 m) length, or 94 for 94" (2.4 m) length

End Cap Sets

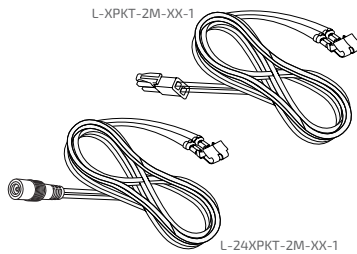


Part #	Description
L-XANGECP-GY-1	Angled end cap set, Gray
L-XANGECP-**-1	Angled end cap set, Other Colors
L-XCRVECP-GY-1	Curved end cap set, Gray
L-XCRVECP-**-1	Curved end cap set, Other Colors
L-XRECECP-GY-1	Recessed end cap set, Gray
L-XRECECP-BL-1	Recessed end cap set, Black
L-XRNDCECP-GY-1	Round end cap set, Gray
L-XRNDCECP-BL-1	Round end cap set, Black
L-XSQRECP-GY-1	Square end cap set, Gray
L-XSQRECP-**-1	Square end cap set, Other Colors

**Insert BL for Black, WH for White, B1 for Dark Brown, B2 for Tan
Flush extrusion does not take end caps.



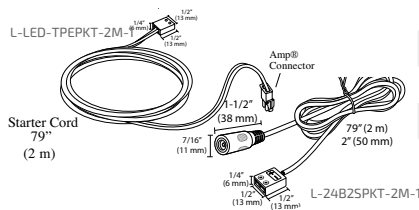
12/24VDC Infinex Starter Cords



Part #	Description
L-XPKT-2M-BL-1	79" (2 m) 12VDC Infinex Starter Cord Black
L-XPKT-2IN-BL-1	2" (50 mm) 12VDC Infinex Starter Cord Black
L-XPKT-2M-WH-1	79" (2 m) 12VDC Infinex Starter Cord White
L-XPKT-2IN-WH-1	2" (50 mm) 12VDC Infinex Starter Cord White
L-24XPKT-2M-BL-1	79" (2 m) 24VDC Infinex Starter Cord Black
L-24XPKT-2M-WH-1	2" (50 mm) 24VDC Infinex Starter Cord Black

To be used with square, curved, round and angled extrusions only.

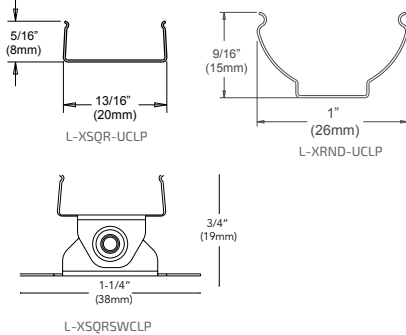
12/24VDC Standard FlexTape® Starter Cords



Part #	Description
L-LED-TPEPKT-2M-1	79" (2 m) 12VDC FlexTape® Straight Starter Lead
L-TPEPKT-2IN-1	2" (50 mm) 12VDC FlexTape® Straight Starter Lead
L-24B2SPKT-2M-1	2 m (29") 24VDC FlexTape® Barrel/2 Screw Trml Starter Lead, White

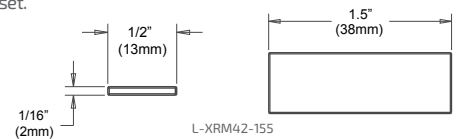
Recessed and Flush extrusions uses standard FlexTape® starter lead.

U-Clips/Magnets

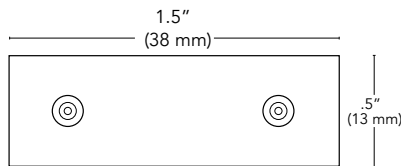


Part #	Description
L-XRND-UCLP-1	Round U-Clips Set (2 Clips)
L-XSQR-UCLP-1	Square/Curved U-Clips Set (2 Clips)
L-XSQRSWCLP-1	Square/Curved Swivel Clips Set (2 Clips)
L-XRM42-155-1	Set of 2 Magnets
L-EXTMP-VHB-1	Set of 2 Mounting Plates

One U-Clip/magnet is recommended for every 1 ft. (.3 m) of extrusion.
No. #4 Phillips flat head screws are included with each U-Clip set.
Mounting Plates to be used with magnet mounted Infinex.



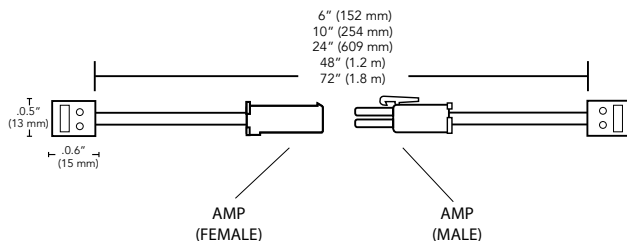
Couplers



Part #	Description
L-EXTBTB10-1	Pack of 10 Couplers

To be used on square and curved extrusions only.

12/24VDC Linking Cords



Part #	Description
L-XLNK-15-**-1	6" (15 cm) Infinex Linking Cord
L-XLNK-25-**-1	10" (25 cm) Infinex Linking Cord
L-XLNK-60-**-1	24" (60 cm) Infinex Linking Cord
L-XLNK-120-**-1	48" (120 cm) Infinex Linking Cord
L-XLNK-180-**-1	72" (180 cm) Infinex Linking Cord

** Insert BL for Black and WH for White

End Caps not used on linked extrusion ends.



COMPONENTS: POWER SUPPLIES, CONTROLLERS AND MORE SEE PAGE 141.