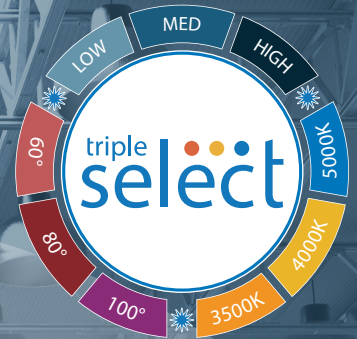


NICOR[®]

HBC6

Selectable Low Bay / High Bay



HBC6

Die-Cast Aluminum Housing

Ultra-slim design with an off-board driver enhances thermal management. The vented aluminum heatsink offers superior cooling while reducing the weight of the fixture.

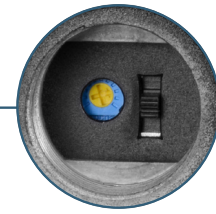
Features Selectable Beam Angle Switching without the need to field swap lens.

The HBC6 LED Circular Low-Bay/High-Bay is a leading high-performance lighting solution with selectable wattage, selectable color temperature, selectable beam angle, and wireless control technology. With a sleek and compact form, it offers improved energy efficiency with low-voltage accessory features. The die-cast aluminum housing with integrated heatsink is designed with multiple mounting points for added options and accessories. The HBC6 produces an impressive light output exceeding 135 lumens per watt and excellent color rendering for true clarity. The impact-resistant polycarbonate lens provides consistent light dispersion, while optional reflectors help reduce glare and provide specific light distribution. The HBC6 operates at 120-277V with 0-10V dimming and a 12V accessory wire for standard or smart (NLC) sensors. Add a 40W emergency backup for added safety and security. The HBC6 is the ideal fixture for warehouses, retail stores, gymnasiums, and other large indoor spaces.



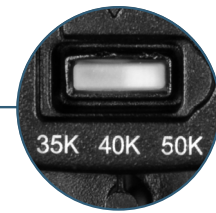
Effortless Installation

A locking bolt hook is included for secure mounting. Available accessories include a 3/4" NPT pendant adapter, yoke, and lens wire guard.



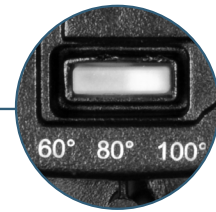
Selectable Wattage

Low Med High



Selectable CCT

3.5K 4K 5K



Selectable Beam Angle

60° 80° 100°

Performance Data

80° Beam Angle				
Model #	CCT	Lumens	Watts	LPW
HBC6150SUS8	3500	13396		135.3
	4000	13997	100	149.4
	5000	13419		138.0
	3500	16039		135.3
	4000	16796	120	149.4
	5000	16102		138.0
HBC6240SUS8	3500	20049		135.3
	4000	20995	150	149.5
	5000	20128		138.0
	3500	28225		140.3
	4000	30256	200	155.7
	5000	29135		145.2
HBC6240SUS8	3500	31048		140.3
	4000	33281	220	155.7
	5000	32049		145.2
	3500	32616		135.1
	4000	34962	240	149.9
	5000	33667		139.8

*See spec sheet for more information on the performance data. Fixture tested per LM-79-08. Photometric data is of the performance of a representative fixture. Results may vary in the field.



Applications: Warehouses, retail stores, gymnasiums, and other large indoor spaces.

Photometric Data

150W 5000K 60°

Input Voltage (VAC)	120-277
System Level Power (W)	145.9
Delivered Lumens (Lm)	20128
System Efficacy (Lm/W)	138.0
Correlated Color Temp (K)	4953
Color Rendering Index (CRI)	83
Beam Angle	64.0
Spacing Criteria	0.94

150W 5000K 80°

Input Voltage (VAC)	120-277
System Level Power (W)	139.8
Delivered Lumens (Lm)	22325
System Efficacy (Lm/W)	159.7
Correlated Color Temp (K)	4960
Color Rendering Index (CRI)	83
Beam Angle	76
Spacing Criteria	1.05

150W 5000K 100°

Input Voltage (VAC)	120-277
System Level Power (W)	149.5
Delivered Lumens (Lm)	21142
System Efficacy (Lm/W)	141.4
Correlated Color Temp (K)	4957
Color Rendering Index (CRI)	83
Beam Angle	100.4
Spacing Criteria	1.39

240W 5000K 60°

Input Voltage (VAC)	120
System Level Power (W)	240.8
Delivered Lumens (Lm)	33667
System Efficacy (Lm/W)	139.8
Correlated Color Temp (K)	4897
Color Rendering Index (CRI)	83
Beam Angle	59.7
Spacing Criteria	0.98

150W 5000K 80°

Input Voltage (VAC)	120-277
System Level Power (W)	229.4
Delivered Lumens (Lm)	36981
System Efficacy (Lm/W)	161.2
Correlated Color Temp (K)	4900
Color Rendering Index (CRI)	83
Beam Angle	74.9
Spacing Criteria	1.05

150W 5000K 100°

Input Voltage (VAC)	120-277
System Level Power (W)	241.3
Delivered Lumens (Lm)	34213
System Efficacy (Lm/W)	141.8
Correlated Color Temp (K)	4903
Color Rendering Index (CRI)	83
Beam Angle	97.3
Spacing Criteria	1.4

Ordering Information

Example: HBC6150SUS8BK

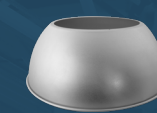
Series	Version	Wattage	Voltage	CCT's	CRI	Finish
HBC	6	150S (100W/120W/150W)	U (120-277VAC)	S (3500K/4000K/5000K)	8 (80+)	BK (Black)
		240S (200W/220W/240W)				WH (White)

Specifications and dimensions subject to change without notice.

Accessories



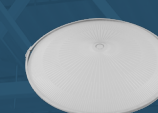
Wire Guard



90° Aluminum Reflector



90° Polycarbonate



Polycarbonate Glare Shield



Pendant Mount Adapter



U-Bracket



Microwave Motion Sensor



PIR Sensor



H12V2-Remote



Emergency Backup



EM Remote



NLC Wireless



Warehouse Locations

Albuquerque, NM
Buford, GA
Roseville, CA

T 800.821.6283

F 800.892.8393

www.nicorlighting.com

2200 Midtown Pl. NE
Albuquerque, NM 87107 USA



LIT-HBC6-10PK
20250130

© 2025 NICOR® • ALL RIGHTS RESERVED

