

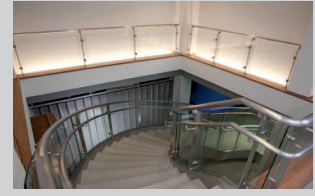
Lumination® AL10

LED ARCHITECTURAL SPECIALTY

Project Name _____

Date _____ Type _____

Notes _____



Lumination® AL10 is the linear LED system that combines versatility with superb quality of light. High color rendering (93 CRI) and ANSI bin color temperature consistency enable this versatile LED system to produce brilliant white light that meets the high standards of lighting designers.

For a variety of retail and architectural applications, this slim, low-profile, LED module offers multiple lengths, viewing angles and mounting angles—making it easy to incorporate into a wide array of designs.

Backed by a reputation for reliability in the LED industry, this robust, low-voltage system is rated to perform for 50,000 hours—reducing material and labor expenses associated with relamping.

Commercial Applications

Cove, retail under shelf, accent and task lighting applications.

Features & Benefits

- High color rendering: 93 CRI
- Multiple ANSI bin color temperatures: 2700K, 3000K and 4000K
- High light levels: up to 210 lm/ft (700 lm/m), 47 lpw
- Low energy consumption: 4.5 W/ft (14.8 W/m)
- Multiple lens options: 60°, 90° or 120° clear and 120° soft beam patterns
- Long rated life of 50,000 hours
- Low-voltage 12VDC system
- Dimmable 0-10V with LED driver
- Contains no lead, mercury or glass

Lumination® AL10

LED ARCHITECTURAL SPECIALTY

Specification Details

Project Name _____

Date _____ Type _____

Notes _____

Performance Data

White Module

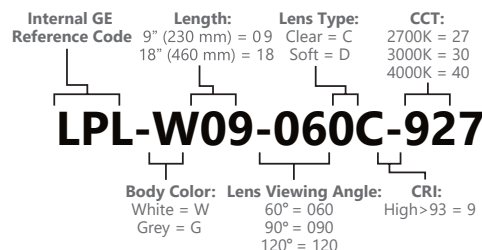
Grey Module

Product Code	Description Code	Product Code	Description Code	Voltage	*CCT	CRI	Lens Type	Length inches (mm)	Lumens per Module (ft./m)	Watts per Module (ft./m)	Lumens per Watt
78878	LPL-W18-120D-927			12	2700K	93	120° soft	18 (460)	290 (193/633)	6.8 (4.5/14.8)	43
78864	LPL-W09-120D-927			12	2700K	93	120° soft	9 (230)	145 (193/633)	3.4 (4.5/14.8)	43
78868	LPL-W18-060C-930			12	3000K	93	60° clear	18 (460)	300 (200/656)	6.8 (4.5/14.8)	44
78872	LPL-W18-090C-930	78897	LPL-G18-090C-930	12	3000K	93	90° clear	18 (460)	300 (200/656)	6.8 (4.5/14.8)	44
78875	LPL-W18-120C-930			12	3000K	93	120° clear	18 (460)	300 (200/656)	6.8 (4.5/14.8)	44
78879	LPL-W18-120D-930	78903	LPL-G18-120D-930	12	3000K	93	120° soft	18 (460)	300 (200/656)	6.8 (4.5/14.8)	44
		78891	LPL-G09-120D-930	12	3000K	93	120° soft	9 (230)	150 (200/656)	3.4 (4.5/14.8)	44
78870	LPL-W18-060C-940			12	4000K	93	60° clear	18 (460)	320 (213/699)	6.8 (4.5/14.8)	47
78873	LPL-W18-090C-940			12	4000K	93	90° clear	18 (460)	320 (213/699)	6.8 (4.5/14.8)	47
78877	LPL-W18-120C-940	78901	LPL-G18-120C-940	12	4000K	93	120° clear	18 (460)	320 (213/699)	320 (213/699)	47
78880	LPL-W18-120D-940			12	4000K	93	120° soft	18 (460)	320 (213/699)	6.8 (4.5/14.8)	47

Components

Product Code	Description Code	Product Description	QTY.
74914	GE020/G/V12T1-B	LED Driver (12VDC/20W); Input Voltage: 90-264VAC	1/PK
67824	GEPS12-60UGL-IP	LED Driver (12VDC/60W); Input Voltage: 120-277VAC	1/PK
79044	GE060/MV/D12T1-A 0-10V	Dimmable LED Driver (12VDC/60W); Input Voltage: 90-305VAC	1/PK
62819	DFU120150	LED Wall Transformer (12VDC/18W) (North America only)	1/PK
62816	LPL-WTCS	Cable with Switch (used only with 62819) (North America only)	1/EA
75612	GEDM1-A	Dimming Module	1/PK
78905	LC-36	Leader Cable - 36-inch (914mm)	5/PK
78906	LC-120	Leader Cable - 120-inch (3048mm)	5/PK
78907	JC-12	Jumper Cable - 12-inch (305mm)	5/PK
78908	JC-72	Jumper Cable - 72-inch (1829mm)	5/PK
62814	MMB-W0	Magnetic Mounting Bracket - White 0° Angle	20/PK
78909	MB-W15	Mounting Bracket - White 15° Angle	20/PK
78910	MB-W30	Mounting Bracket - White 30° Angle	20/PK
78911	MB-G15	Mounting Bracket - Grey 15° Angle	20/PK
78912	MB-G30	Mounting Bracket - Grey 30° Angle	20/PK
62187	LPL-MTS36/0	Mounting Track with Light Shield	10/PK

Product Description Codes



Technical Specifications

Specification Item	Specification
Operating Voltage	12 VDC
Maximum Loading	74914: 4 ft. (1.22m); 67824 & 79044: 13 ft. (3.96m); 62819: 4.5 ft. (1.37m)
Remote Mounting	Standard length of 1-30 ft. (0.3-9.14m) with 18AWG (0.82mm ²) supply wire; for greater lengths refer to the installation instructions.
Ambient Temperature	-20°C to +40°C
IP Rating	IP54: dry or damp location rated
Limited Warranty	5 years

System Certifications 

Lumination® AL10

LED ARCHITECTURAL SPECIALTY

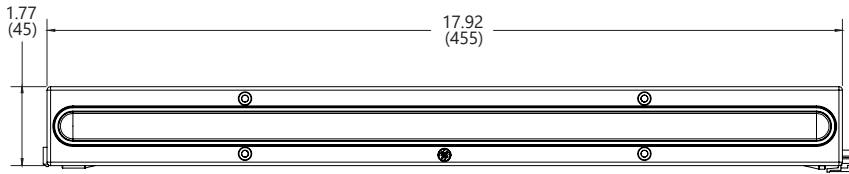
Dimensional Details

Project Name _____

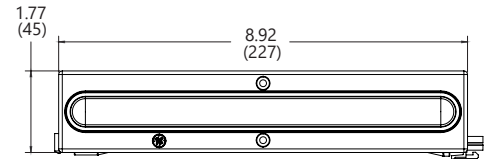
Date _____ Type _____

Notes _____

Dimensional Drawings Typical dimensions shown in inches (mm)



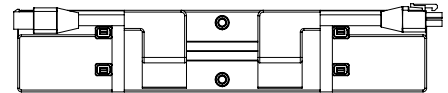
18" (460 mm) Top View



9" (230 mm) Top View

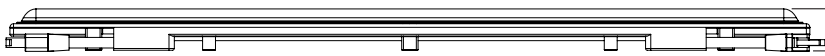


18" (460 mm) Bottom View



9" (230 mm) Bottom View

60° Clear Lens



18" (460 mm) Side View

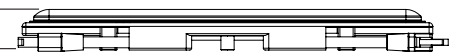


9" (230 mm) Side View

90° Clear Lens

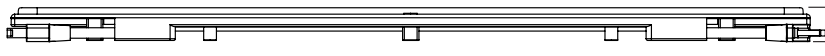


18" (460 mm) Side View

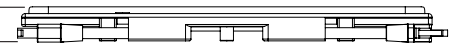


9" (230 mm) Side View

120° Clear Lens

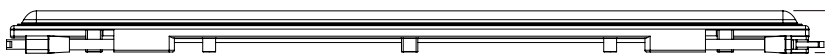


18" (460 mm) Side View

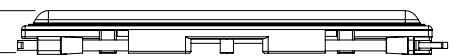


9" (230 mm) Side View

120° Soft Lens

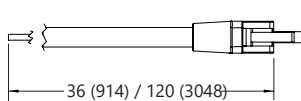


18" (460 mm) Side View

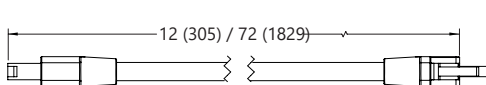


9" (230 mm) Side View

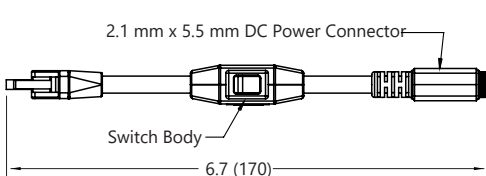
Leader Cable



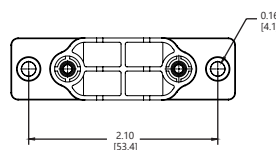
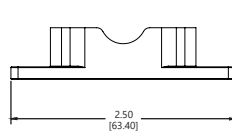
Jumper Cable



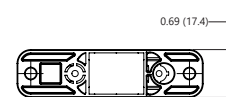
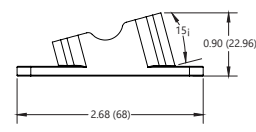
Cable with Switch



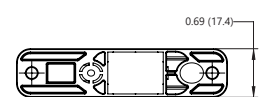
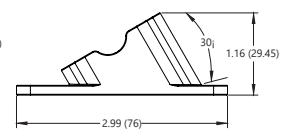
0° Mounting Bracket



15° Mounting Bracket



30° Mounting Bracket



Lumination® AL10

LED ARCHITECTURAL SPECIALTY

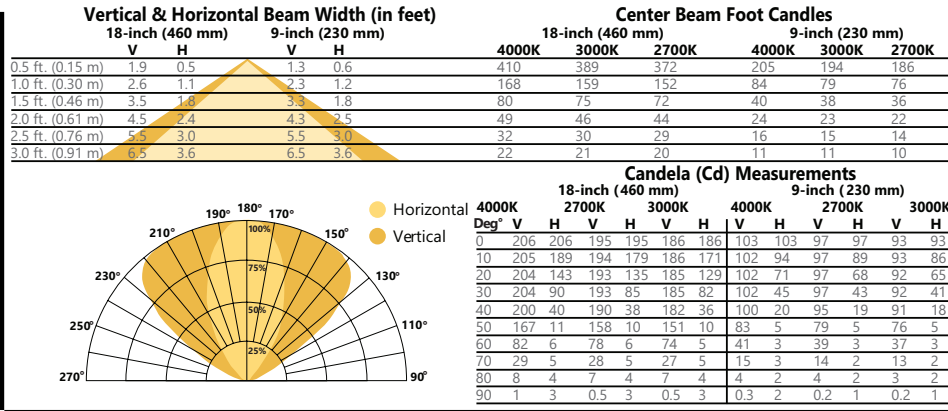
Photometric Details

Project Name _____

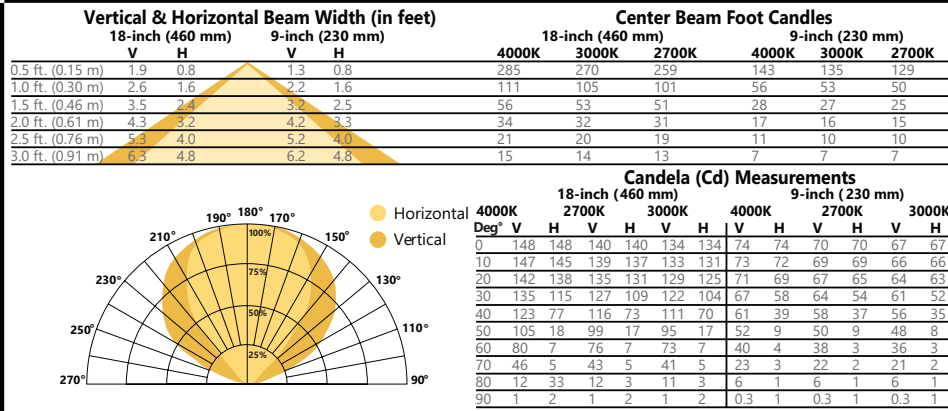
Date _____ Type _____

Notes _____

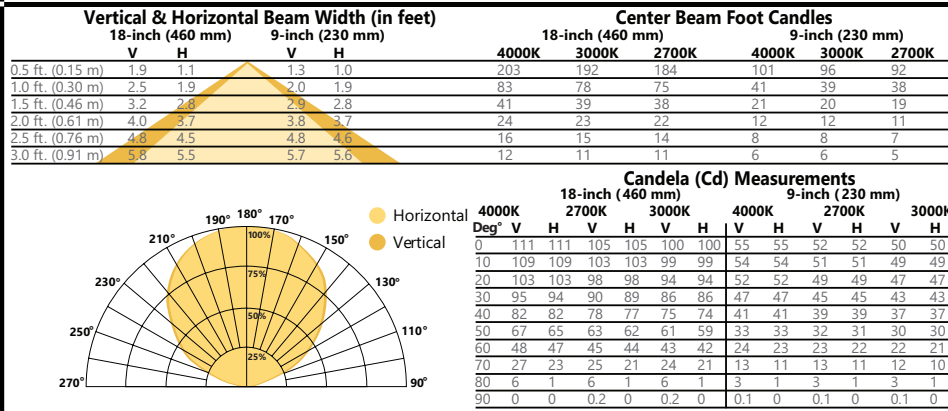
60° Clear Lens



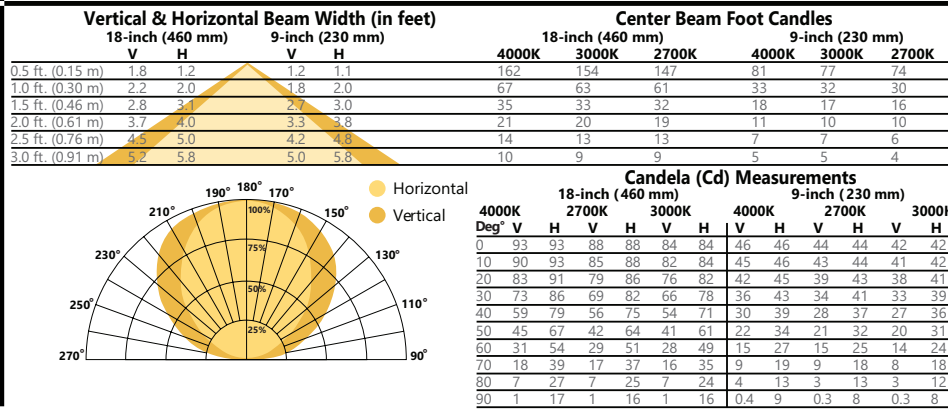
90° Clear Lens



120° Clear Lens



120° Soft Lens



IES files can be downloaded at www.gecurrent.com