

NICOR® Paragon

SPECIFICATION GRADE DOWNLIGHT



MODULAR ARCHITECTURAL DOWNLIGHT SYSTEMS

NICOR[®] Paragon

WITH OVER **100,000**

configurations there is an ideal combination for you and any location: commercial, residential & architectural. MAKE IT PERFECT. MAKE IT PARAGON.

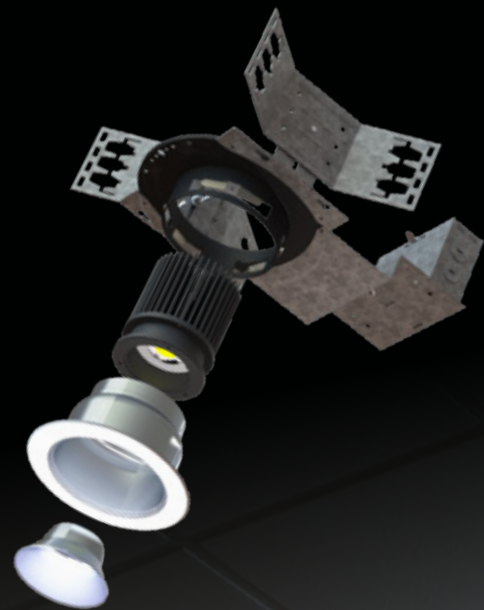
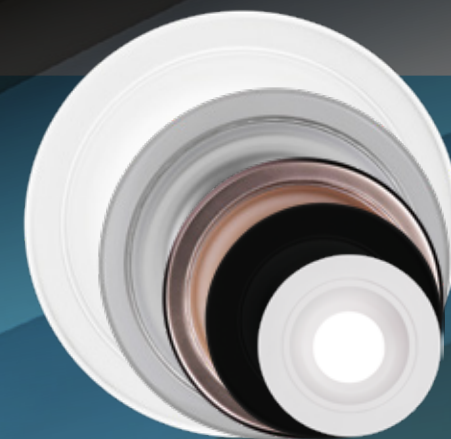


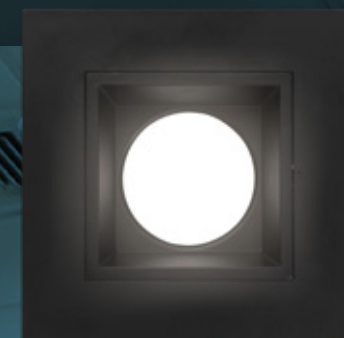
TABLE OF CONTENTS

Sizes
(p4)



NICOR[®]
Paragon
3-10" (p7)

DDA
3" (p8)



CDA
4-10" (p18)



DDA & CDA SIZES

PARAGON OVERVIEW

The Paragon family of downlights is comprised of the DDA and CDA lines. The 3" DDA is ideal for residential and hospitality, while the CDA is perfect for commercial, retail, hospitality and residential locations with 4", 6", 8", and 10" sizes.



DDA | 3"

Great for residential homes and multiple family homes



CDA | 10" 8" 6" & 4"

Perfect for ceilings up to 60 feet

10 INCH

8 INCH

6 INCH

4 INCH

3 INCH

Actual
Sizes Shown



NICOR® Paragon



OPTICS

Field interchangeable optic lenses, available in wall wash and in various beam spreads. Deep reflectors with 55° cut-offs keep glare at a minimum.



3-STEP MACADAMS

The MacAdams ellipse is the measurement of color consistency. During manufacturing the LED chips are painstakingly binned by color consistency adding additional cost. NICOR requires the LED chips to be produced within a 3-step MacAdam ellipse range, the preferable color consistency for most commercial installations.



TRI DIMMING

High-end drivers combine efficiency with functionality. Tri Dimming offers TRIAC, ELV, and 0-10V dimming in one convenient unit.



TRIAC
ELV
0-10V



- 2700K
- 3000K
- 3500K
- 4000K
- 5000K

80 CRI
90 CRI

1200-
9000
LUMENS

DIM TO WARM
Mimic incandescent dimming with up to 38W light engines
1800K-3000K

SIZES

- 3"
- 3"
- 4"
- 6"
- 8"
- 10"



DDA INTRO

INTRODUCTION

The sophisticated small aperture of the DDA 3" LED downlight and adjustable housing offer a designer-look for today's residential and commercial interiors. Featuring **low-glare optics** and a **55° cut-off**, the deeply recessed LED source provides visual comfort and high quality illumination with standard **Tri Dimming**. The DDA is perfect for any decor. Available in 1400 or 2200 lumen packages.

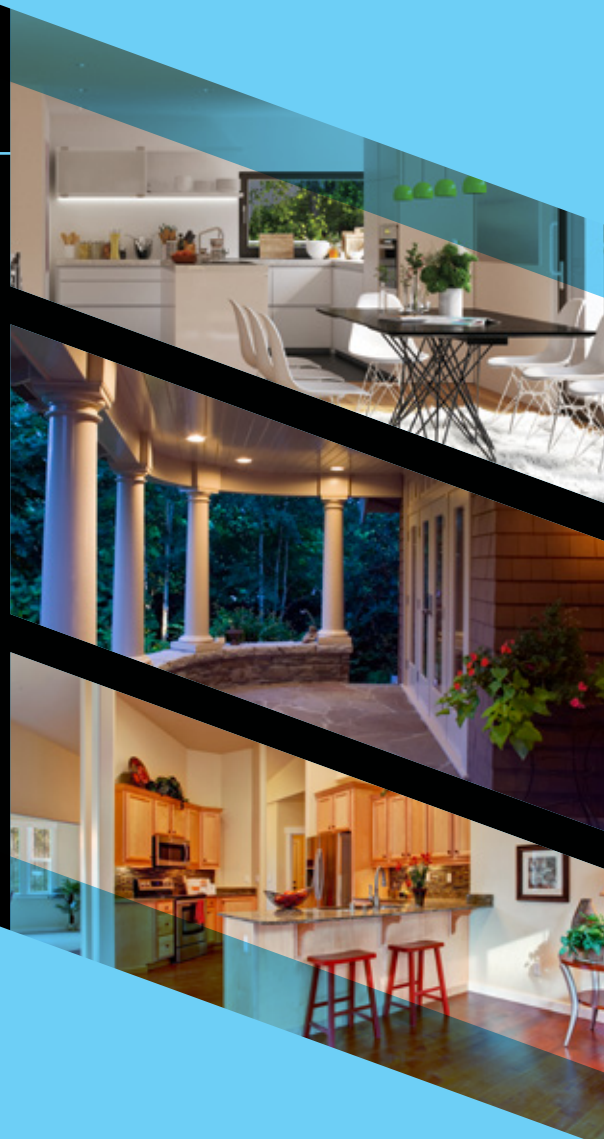


DDA has over

10,000 configurations

to best match your layout

APPLICATIONS



RESIDENTIAL HOMES

Kitchens, living rooms, hallways, bathrooms, and accent lighting

EXTERIOR

Porches, patios, soffits, garages, and poolsides

HOSPITALITY

Hotels: Lobbies, rooms, hallways, and restrooms
Eateries: Pubs, restaurants, and nightlife

RETAIL & MALLS

High end retail stores require high quality trims and low glare optics.



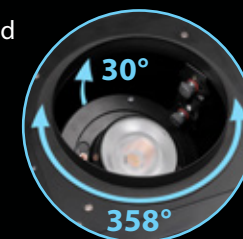
OPTICS

Field interchangeable optic lenses available in 4 beam spreads: 15°, 25°, 36°, and 60°



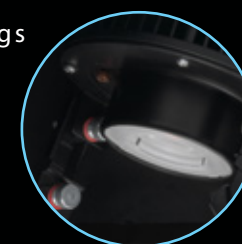
ADJUSTABILITY

30° vertical adjustment and 358° horizontal rotation



TELESCOPIC

Adjustment for ceilings up to 1½" thick



TRI DIMMING

Triac, ELV and 0-10V standard with all light engines, 120-277V drivers



TRIAC
ELV
0-10V



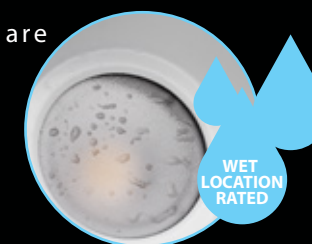
QUIET CEILINGS

Trim installed flush with the ceiling plane



WET LOCATION

All trims with a lens are wet location listed and come standard with a Solite lens



● 2700K
● 3000K
● 3500K
● 4000K
● 5000K

80 CRI
90 CRI

1400-2200 LUMENS

DIM TO WARM
Mimic incandescent dimming with up to 15W light engines
1800K-3000K

REDUCE INVENTORY
Round and square trims fit in the same housing, reducing inventory



DDA OVERVIEW



TRIMS
70
VARIETIES Including: baffle, lensed
wet location, wall wash
and quiet ceiling options

REMODEL & NEW CONSTRUCTION
ICAT
RATED HOUSING Airtight enclosure
rated for contact
with insulation

BEAM PATTERNS
5
OPTIONS 15° 25° 36° 60° WW
Available in standard output

ADJUSTABLE ICAT HOUSING
30° Vertical Adjustment
358° Horizontal Rotation



DDA **TRIMS**

THE COLOR FOR YOU

We offer so many trim options to match your needs. Choose from wet location vs damp location, baffle vs smooth, downlight vs adjustable vs wallwash, round vs square, and white vs black. Make your selection match your needs.

LIGHTING FOR ANY SITUATION

From the kitchen to the bathroom and poolside to porch we have you covered. MAKE IT PERFECT. MAKE IT **PARAGON**.



SELECTING YOUR TRIM STYLE

1 Recessed Lighting Applications



Downlight

A clean look with a deep recessed optic for optimal glare control with excellent performance.

OR



Adjustable

Excellent for sloped ceiling or accent lighting such as illuminating a painting or work of art.

OR



Wall Wash

Provides excellent wall illumination with a smooth beam pattern.

2 Wet Location Options



Lensed Wet Location

Choose for use in showers and outdoor patio areas



Damp Location

Available as a default for areas with minor condensation



Damp Location

Great for textured walls and low ceiling applications

3 Color and Shape



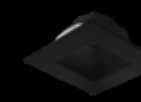
White Round



Black Round



White Square



Black Square

○ Round - Contemporary masterpiece

□ Square - Modern yet architectural

■ White - Classic and traditional

■ Black - Edgy and industrial



Colors

Available in White, Specular Clear, and Black in a smooth round finish

4 Style



Smooth

Provides a classic and traditional aesthetic



Baffle

Reduces glare

5

Quiet Ceiling

Provide a visually smooth appearance using the quiet ceiling adaptor. Available for all trims.

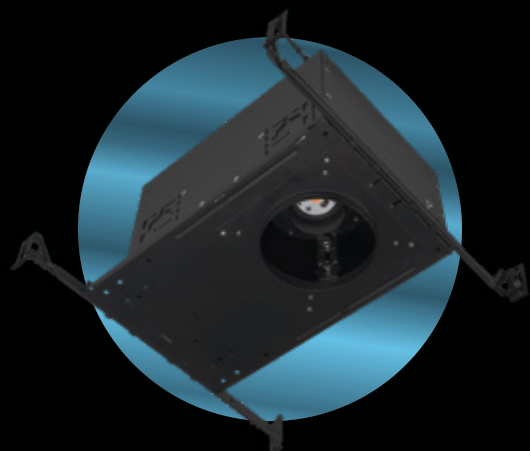




DDA HOUSINGS

PARAGON POWER

Efficient and affordable, the DDA ICAT housings are available in 15W and 21W options for remodel and adjustable installations. Rough-ins made easy, keeping your lighting secure, safe, and simple to install.



Adjustable ICAT Housing

Featuring 30° vertical adjustment, 358° horizontal adjustment, and a slot adjustment for thick ceiling installations. Included butterfly brackets provide mounting for commercial ceilings.

- 15W (1200 lumen) or 21W (2200 lumen)
- CCT options: 2700K, 3000K, 3500K, 4000K, and 5000K
- 80 or 90 CRI
- Housing is ICAT rated for direct contact with insulation and Air-Tight insulations meets ASTM 283 requirements for restricted air flow
- Round and Square trims provide flexibility by utilizing the same housing
- Telescopic adjustments
- Title 24 and Energy Star compliant
- Wet location listed when used with lensed wet location trim
- Butterfly brackets attached to housing for commercial installations

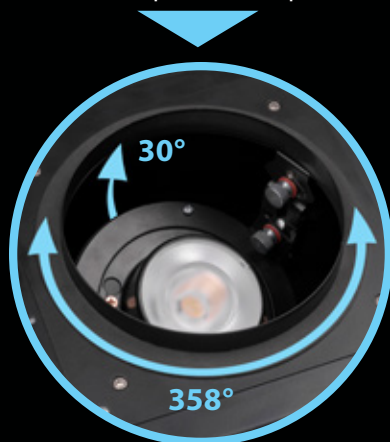
Commercial Butterfly Bracket

The adjustable DDA comes complete with a flat butterfly bracket attached to each side, allowing for easy commercial installations with 'C' channels or conduit. Bend the wings of the bracket forward during installation.



358° Horizontal Rotation

Easily rotate the aiming mechanism to the desired location. The locking screw ensures permanent placement.



Light Engine

Superior performance and color consistency. Select from 2700K through 5000K CCT and 80 or 90 CRI. LEDs are binned within a 3-step MacAdam Ellipse.

LED Driver

120V-277V driver has our exclusive Tri Dimming compatibility with Triac, ELV and 0-10V. Driver is mounted to the interior J-Box door and fully accessible from the inside of the housing.

Junction Box

Rated for through branch wiring maximum of (6) 12GA > 90° C rated wires and has four 1/2" pry outs.



Optic Lens

Field interchangeable optic lens provides beam spreads of 15°, 25°, 36°, and 60°.

Vertical Telescopic Adjustment (High and Low Positions)

Innovative design featuring a "Telescopic" slot for vertical adjustment. This unique feature combined with our thick ceiling adaptors keep the LED aligned with the reflector at any ceiling thickness from 1/2" to 1 1/2".

Tool Free Aiming

Vertical rotation to 30° easily locks into position with thumb screws.

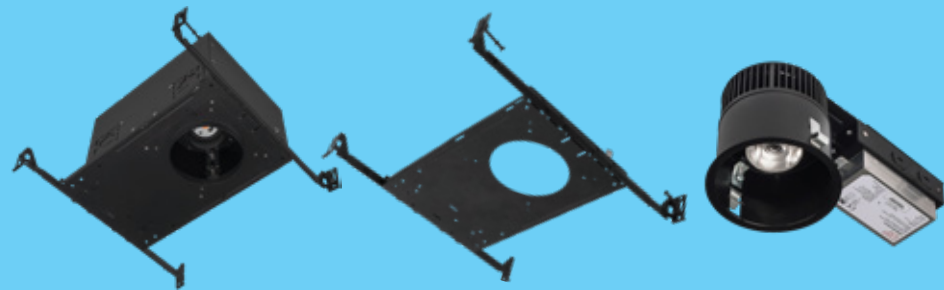


ADJUSTMENTS AT A GLANCE

- 3** WAYS TO ADJUST
- Telescopic Vertical Adjustment: 1/2" to 1 1/2"
 - Tool Free Aiming: 30°
 - Horizontal Rotation: 358°



DDA HOUSINGS



INCREASED FLEXIBILITY

All DDA housings fit both round and square trims, making it easy to mix and match!!



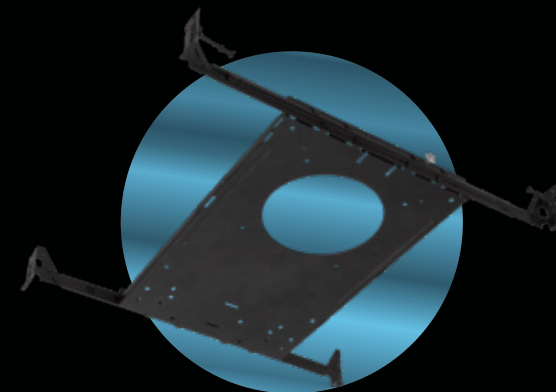
FEATURING
1200 OR 2200
LUMEN PACKAGES



Downlight ICAT Housing Remodel or New Construction

The Downlight housing features insulation contact and airtight ratings for use in new construction or remodel residential applications with the standard downlight trim.

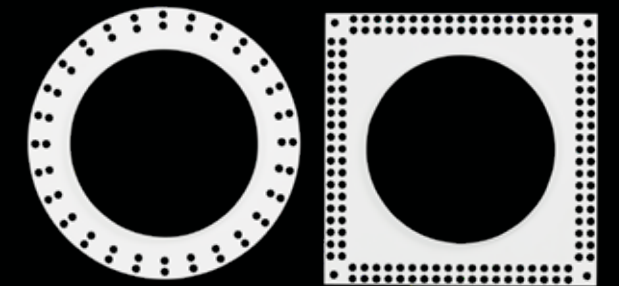
- 15W (1200 lumen) or 21W (2200 lumen)
- CCT options: 2700K, 3000K, 3500K, 4000K, and 5000K
- 80 or 90 CRI
- Housing is ICAT rated for direct contact with insulation and Air-Tight and meets ASTM 293 requirements for restricted air flow
- Round and Square trims provide flexibility by utilizing the same housing
- Title 24 and Energy Star compliant
- Wet location listed when used with lensed wet location trim



Plaster Frame

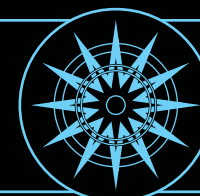
The plaster frame allows the housing to be installed in new construction applications.

- For joist ceiling installations
- Used in conjunction with the downlight housing



Quiet Ceilings

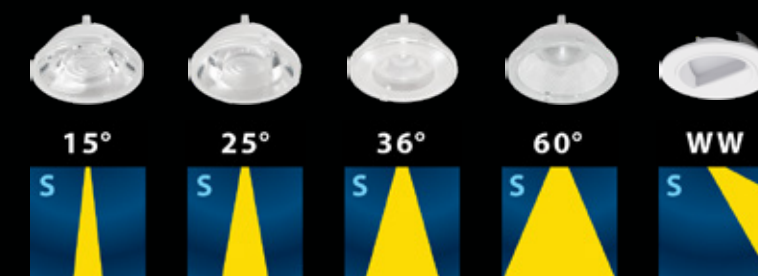
Our quiet ceiling adaptors allow trims to sit flush with the finished ceiling surface with a minimal visual presence. The adaptors are die-cast construction to form a ridged surface for mudding, eliminating cracking and creating a sophisticated finish.



DDA OPTICS

DIFFUSE THE LIGHT

Light distribution options available in 5 beam patterns: 15°, 25°, 36°, 60°, and wallwash.



Available in standard output

CDA INTRO

INTRODUCTION

The CDA series of specification grade downlights is a new generation of lighting available in over **100,000 configurations**. Today's energy codes demand flexibility in power consumption. The CDA series is an energy efficient, cost-effective solution designed to meet and exceed the demanding needs of commercial, retail, hospitality, institutional and residential spaces with **ceilings up to 60 feet**. Available in 4", 6", 8" and 10" sizes.



CDA has over

**100,000 configurations
and up to 115Lm/W**

to best match your layout

APPLICATIONS



OFFICE BUILDINGS

Entries, lobbies, corridors, hallways, and conference rooms

COMMERCIAL SPACES

Automobile dealerships, airports, theaters, museums and hotel lobbies, and hospitality such as restaurants, eateries, and pubs

INSTITUTIONAL

Entries, passageways, open-traffic areas, showrooms, restrooms, and food service

HEALTH CARE

Extended care facilities, urgent care centers, hospitals, and mental health. Entries, reception areas, hallways, and offices.



OPTICS

Field interchangeable optic lenses, **High Output** available in 40° and 60° angles and **Standard** available in 20°, 40° and 60° angles



TRI DIMMING

Triac, ELV and 0-10V are standard with all light engines, 120-277V drivers

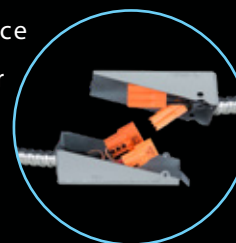


**TRIAC
ELV
0-10V**



EASY UPKEEP

Below the ceiling maintenance using a quick connector for the driver and light engine



QUIET CEILINGS

Flangeless reflectors available on all aperture sizes



RETROFIT

The CDA luminaires are UL listed for retrofit installations



WET LOCATION

All CDA fixtures are wet location listed when used as a system



● 2700K
● 3000K
● 3500K
● 4000K
● 5000K

80 CRI
90 CRI

1200-9000 LUMENS

DIM TO WARM
Mimic incandescent dimming with up to 38W light engines
1800K-3000K

SIZES



CDA OVERVIEW



GLARE SHIELD

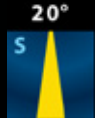


Improve visual comfort by limiting the range of wider optics

BEAM PATTERNS

6

OPTIONS



Standard / High Output / Wallwash
High Output only available on 40° and 60°

LIGHT ENGINE

DIM TO WARM

Mimic incandescent dimming with up to 38W light engines

REMODEL (4" SHOWN)



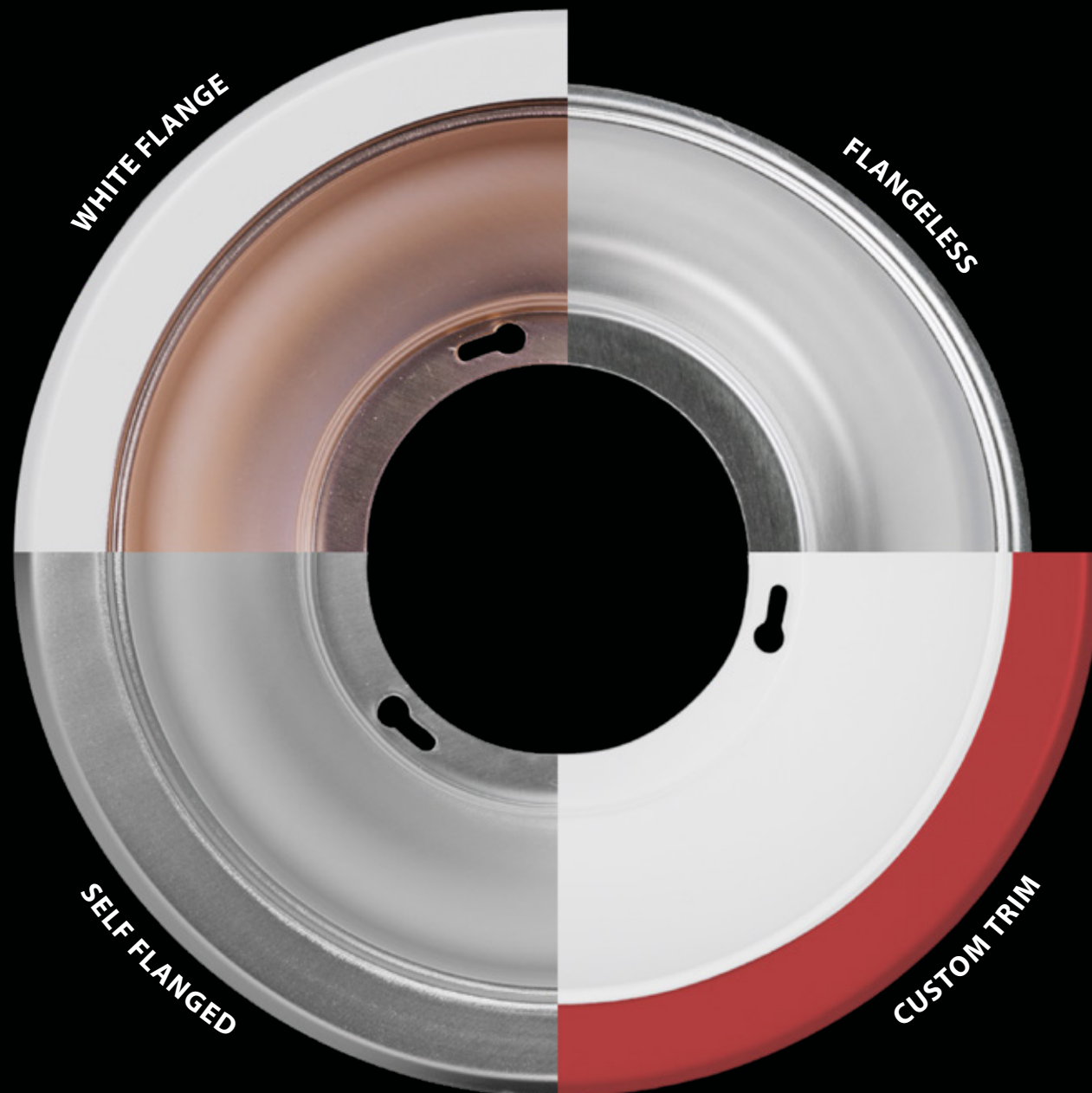
Refresh existing construction with led lighting



CDA **TRIMS**

THE COLOR FOR YOU

We offer so many colors to match your needs. From champagne to haze we have a solution for you and your location.



AVAILABLE ARCHITECTURAL FINISHES

Self Flange

Flange is the same color as the reflector for a cohesive look

Specular Clear
SC

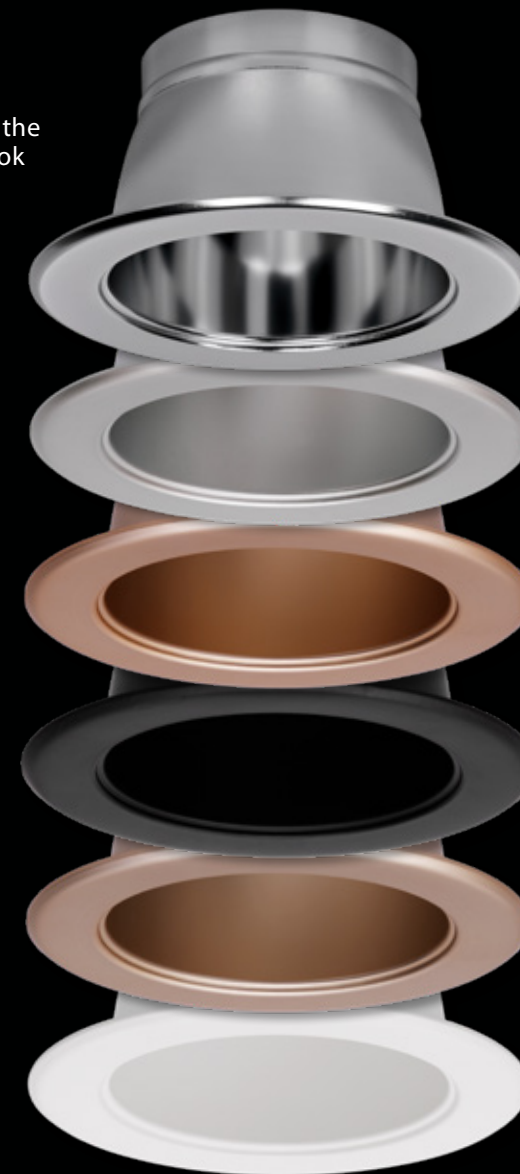
Haze
CZ

Champagne
CM

Black
BK

Wheat
GL

White
WH



Flangeless

All of the same reflector colors available without flange



White Flange

All of the same reflector colors available with a white flange



Custom Flange

All of the same reflector colors available with a custom flange



Choose Your Reflector

Create your best look with a large selection of reflector and flange options!

Self Flanged

For a more seamless look self flanged beautifully blends into any showroom

White Flange

Provides a smooth transition from white ceiling to flange while the reflector adds additional color

Flangeless

Discernibly architectural this flangeless option sits flush with the ceiling

Custom Trim

Need something else? Specify a custom flange for a truly distinct look

4" Wall Wash Available

The wall wash optic inserts into the reflector to provide clean vertical illumination right up to the ceiling line



available in white and specular clear

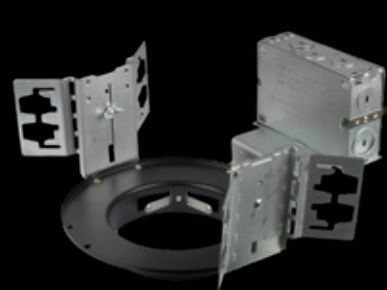


CDA HOUSINGS

THE MAIN FRAME

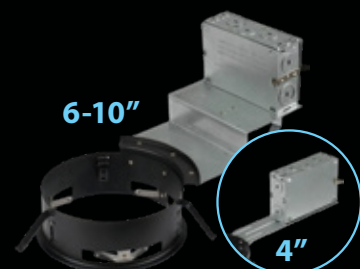
A wide variety of housing offerings allow for installation almost anywhere. Fully compatible with CDA accessories for a beautiful finish.

4-10" FRAMES



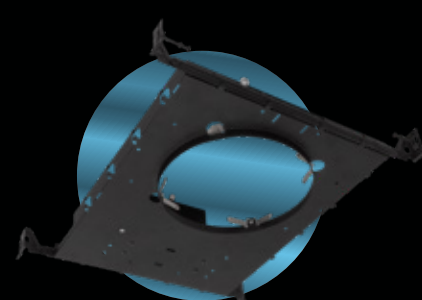
Architectural Frame

Butterfly brackets for commercial ceiling installations using C-channel bars



Remodel Frame

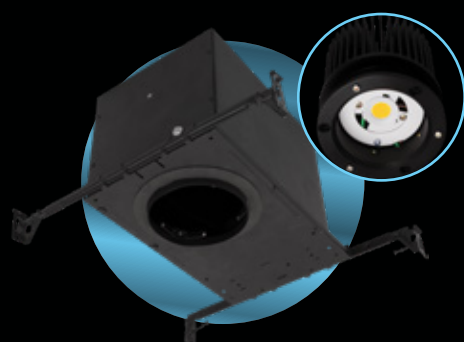
Arch clips and a narrow form factor for remodel applications



Plaster Frame

Features adjustable hanger bars for joist ceiling installations

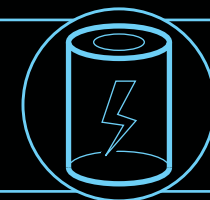
4" ICAT HOUSING



CDA4 ICAT Housing with Standard Light Engine

For new construction with insulated ceilings and airtight requirements

- 4" ICAT housing up to 38 Watts
- Excellent for residential high ceiling applications
- See Standard Light Engine for more details



CDA LIGHT ENGINES

PARAGON POWER

Efficient and affordable, these modules provide up to 120 lumens per watt. Rough-ins made easy, keeping your lighting secure, safe, and simple to install.

4-10"



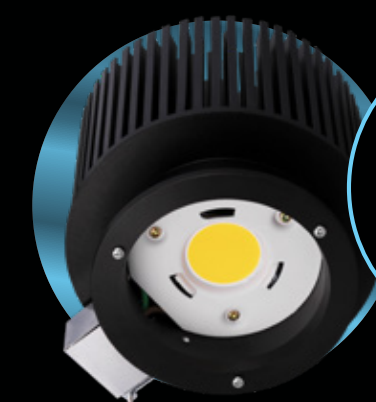
FEATURING
1200 TO 6000
LUMEN PACKAGES



Standard Light Engine

Available in 5 CCTs with available wattages of 16W, 25W, 38W, and 50W. Dim-to-warm options are available in 16W, 25W, and 38W.

6-10"



FEATURING
6000 TO 9000
LUMEN PACKAGES

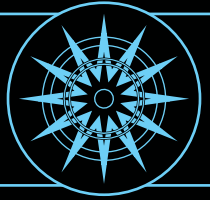


High Output Light Engine

Available on the 6-10" reflectors in a variety of color temperatures at 70W or 100W outputs.

LIGHT ENGINE FEATURES

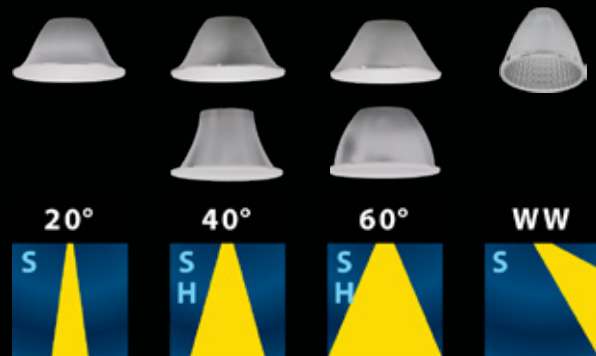
- Tri Dimming Driver; 120-277V driver comes standard with full-range dimming ELV, TRIAC and 0-10V down to 1%
- Field interchangeable optics in narrow, medium, wide and wallwash
- 2700K-5000K CCT's with 80 or 90 CRI
- Extensive lumen packages from 1200 to 9000 lumens
- Wet Location listed for all reflector and optic combinations, wall wash is damp location
- Universal Light Engine for all trims
- 3-Step MacAdams binning
- Retrofit installations into most existing frames
- Dim-to-Warm
- L70 at 50,000 hours in accordance with IES TM-21
- Energy Star Qualified
- 5-Year Warranty



CDA **OPTICS**

DIFFUSE THE LIGHT

Light distribution options available in high output and standard output options. High output available in 40° and 60°, Standard available in 20°, 40°, 60°, and wall wash beam patterns.



Wall Wash Insert
Easy to install to create a wall wash beam pattern

Save time with easy to install optics!



MAKE YOUR LIGHTING
Perfect
MAKE YOUR LIGHTING

NICOR
Paragon

NICOR[®] LED Paragon

MAKE IT PERFECT.
MAKE IT PARAGON.

Warehouse Locations

Albuquerque, NM
Buford, GA
Roseville, CA

T 800.821.6283

F 800.892.8393

www.nicorlighting.com

2200 Midtown Pl. NE
Albuquerque, NM 87107 USA



LIT-PARAGON-10PK

20240304

©2024 NICOR[®] • ALL RIGHTS RESERVED